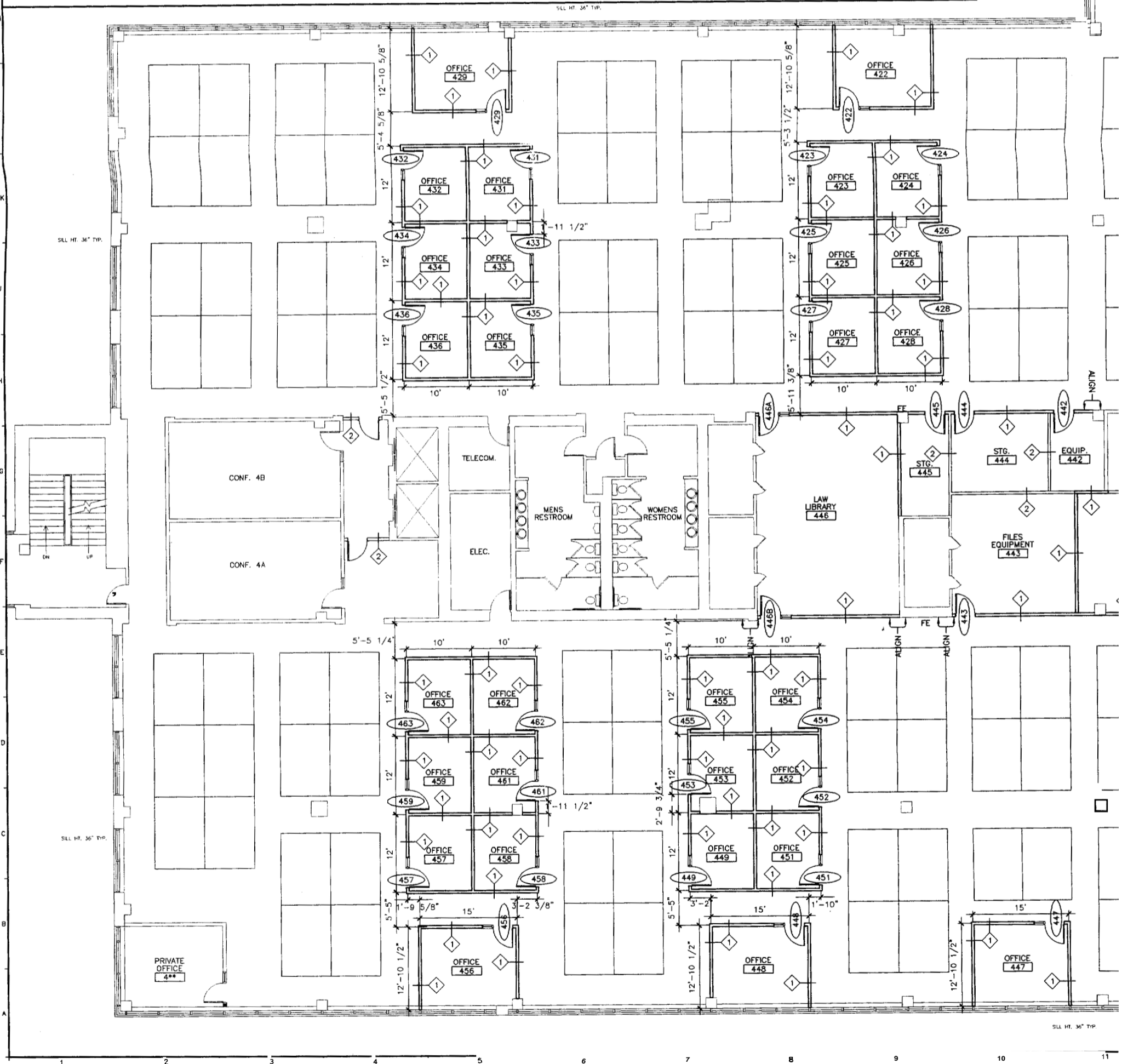


NO.	DOOR			GLAZ	FRAME		HWS	REMARKS
	SIZE	MATL	ELEV		MATL	ELEV		
11	3'-0" x 7'-0"	MTL	1	TEMP	MTL	A	1	1'-6" SIDE LITE-MATCH EXISTING
12	3'-0" x 7'-0"	MTL	1	TEMP	MTL	A	1	1'-6" SIDE LITE-MATCH EXISTING
13	3'-0" x 7'-0"	MTL	1	TEMP	MTL	A	1	1'-6" SIDE LITE-MATCH EXISTING
14	3'-0" x 7'-0"	MTL	1	TEMP	MTL	A	1	1'-6" SIDE LITE-MATCH EXISTING
15	3'-0" x 7'-0"	MTL	1	TEMP	MTL	A	1	1'-6" SIDE LITE-MATCH EXISTING
16	3'-0" x 7'-0"	MTL	1	TEMP	MTL	A	1	1'-6" SIDE LITE-MATCH EXISTING
17	3'-0" x 7'-0"	MTL	1	TEMP	MTL	A	1	1'-6" SIDE LITE-MATCH EXISTING
18	3'-0" x 7'-0"	MTL	1	TEMP	MTL	A	1	1'-6" SIDE LITE-MATCH EXISTING
19	3'-0" x 7'-0"	MTL	1	TEMP	MTL	A	1	1'-6" SIDE LITE-MATCH EXISTING
21	3'-0" x 7'-0"	MTL	1	TEMP	MTL	A	1	1'-6" SIDE LITE-MATCH EXISTING
22	3'-0" x 7'-0"	MTL	1	TEMP	MTL	A	1	1'-6" SIDE LITE-MATCH EXISTING
23	3'-0" x 7'-0"	MTL	1	TEMP	MTL	A	1	1'-6" SIDE LITE-MATCH EXISTING
24	3'-0" x 7'-0"	MTL	1	TEMP	MTL	A	1	1'-6" SIDE LITE-MATCH EXISTING
25	3'-0" x 7'-0"	MTL	1	TEMP	MTL	A	1	1'-6" SIDE LITE-MATCH EXISTING
26	3'-0" x 7'-0"	MTL	1	TEMP	MTL	A	1	1'-6" SIDE LITE-MATCH EXISTING
27	3'-0" x 7'-0"	MTL	1	TEMP	MTL	A	1	1'-6" SIDE LITE-MATCH EXISTING
28	3'-0" x 7'-0"	MTL	1	TEMP	MTL	A	1	1'-6" SIDE LITE-MATCH EXISTING
29	3'-0" x 7'-0"	MTL	1	TEMP	MTL	A	1	1'-6" SIDE LITE-MATCH EXISTING
31	3'-0" x 7'-0"	MTL	1	TEMP	MTL	A	1	1'-6" SIDE LITE-MATCH EXISTING
32	3'-0" x 7'-0"	MTL	1	TEMP	MTL	A	1	1'-6" SIDE LITE-MATCH EXISTING
33	3'-0" x 7'-0"	MTL	1	TEMP	MTL	A	1	1'-6" SIDE LITE-MATCH EXISTING
34	3'-0" x 7'-0"	MTL	1	TEMP	MTL	A	1	1'-6" SIDE LITE-MATCH EXISTING
35	3'-0" x 7'-0"	MTL	1	TEMP	MTL	A	1	1'-6" SIDE LITE-MATCH EXISTING
36	3'-0" x 7'-0"	MTL	1	TEMP	MTL	A	1	1'-6" SIDE LITE-MATCH EXISTING
39A	3'-0" x 7'-0"	MTL	1	TEMP	MTL	B	1	
39B	3'-0" x 7'-0"	MTL	1	TEMP	MTL	B	1	
41	3'-0" x 7'-0"	MTL	1	TEMP	MTL	B	1	
42	3'-0" x 7'-0"	MTL	1	TEMP	MTL	B	1	
43	3'-0" x 7'-0"	MTL	1	TEMP	MTL	B	1	
44	3'-0" x 7'-0"	MTL	1	TEMP	MTL	B	1	
45	3'-0" x 7'-0"	MTL	1	TEMP	MTL	B	1	
46A	3'-0" x 7'-0"	MTL	1	TEMP	MTL	A	1	1'-6" SIDE LITE-MATCH EXISTING
46B	3'-0" x 7'-0"	MTL	1	TEMP	MTL	A	1	1'-6" SIDE LITE-MATCH EXISTING
47	3'-0" x 7'-0"	MTL	1	TEMP	MTL	A	1	1'-6" SIDE LITE-MATCH EXISTING
48	3'-0" x 7'-0"	MTL	1	TEMP	MTL	A	1	1'-6" SIDE LITE-MATCH EXISTING

WALL TYPES:

- ① 3" METAL STUD WALL WITH SOUND BATT INSULATION AND 1 LAYER 5/8" TYPE X GWB. EA. (SEE DETAIL U1/AE102).
- ② FULL HEIGHT FURNITURE WALL BY OWNER.

HWS 1- STANDARD LOCKSET. (MATCH EXISTING OFFICE 403)



11/12/2012
B2

- 4) CARPET TILE TO REMAIN.
- 5) NEW RUBBER BASE TO MATCH EXISTING.
- 6) PAINT WALLS TRIM. DOOR FRAME. AND DOOR TO MATCH EXISTING.
- 7) ALL FINISHES TO MATCH EXISTING.
- 8) DOORS ARE LOCATED 6" FROM CORNER UNLESS NOTED OTHERWISE.
- 9.) FIRE EXTINGUISHERS SHOWN ARE EXISTING TO REMAIN.



REV.	DESCRIPTION	DATE

PROGRESS
10-27-04

CURRENT ISSUE STATUS:

SM RT ARCHITECTURE ENGINEERING PLANNING
 SMRT
 144 Fore Street/P.O. Box 618
 Portland, Maine 04104
 tel. (207) 772-3846
 fax. (207) 772-1070

UNIMPROVIDENT
H03 4TH FLOOR RENOVATION
 PORTLAND, MAINE
 PROJECT: **FOURTH FLOOR PLAN**

SHEET TITLE
 SCALE 1/8"=1'-0" DATE
 PROJECT MANAGER: JLH GRAPHIC SCALE: 0"
 JOB CAP/DRAWN: RZL
 A/E OF RECORD: JLH SHEET No.
 SMRT CAD FILE: AE101-04168
 PROJECT No. 04168 **AE101**