

RE: 2011 Congress  
 # 030975  
 CBL 215 3002



- FORRANT
- VALVE
- BASIN
- LE
- SED TEST BORING

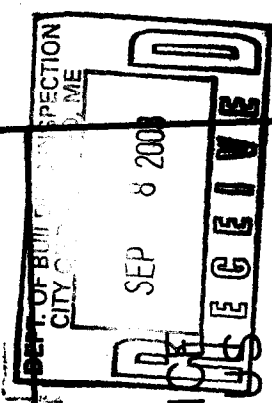
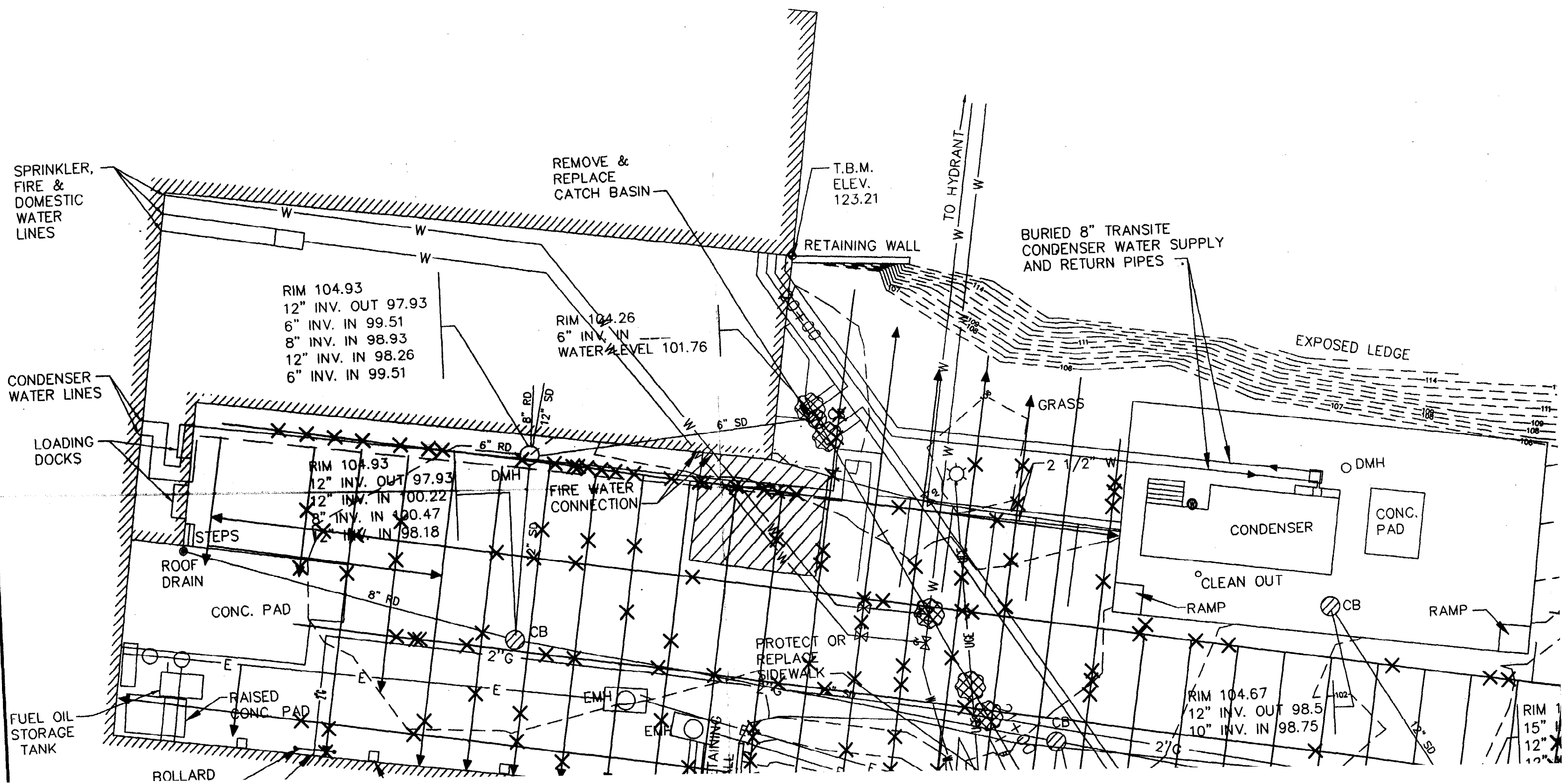


PLATE 2  
 GPR SURVEY  
 UNUM LIFE INSURANCE  
 HOME OFFICE CAMPUS  
 SOUTH PORTLAND, MAINE  
 FILE 03G46 JULY, 2003  
 HAGER-RICHTER GEOSCIENCE, INC.  
 SALEM, NEW HAMPSHIRE





SPRINKLER,  
FIRE &  
DOMESTIC  
WATER  
LINES

REMOVE &  
REPLACE  
CATCH BASIN

T.B.M.  
ELEV.  
123.21

BURIED 8" TRANSITE  
CONDENSER WATER SUPPLY  
AND RETURN PIPES

RIM 104.93  
12" INV. OUT 97.93  
6" INV. IN 99.51  
8" INV. IN 98.93  
12" INV. IN 98.26  
6" INV. IN 99.51

RIM 104.26  
6" INV. IN  
WATER LEVEL 101.76

EXPOSED LEDGE

CONDENSER  
WATER LINES

LOADING  
DOCKS

RIM 104.93  
12" INV. OUT 97.93  
12" INV. IN 100.22  
8" INV. IN 100.47  
12" INV. IN 98.18

FIRE WATER  
CONNECTION

CONDENSER

CONC.  
PAD

ROOF  
DRAIN

CONC. PAD

CLEAN OUT

CB

FUEL OIL  
STORAGE  
TANK

RAISED  
CONC. PAD

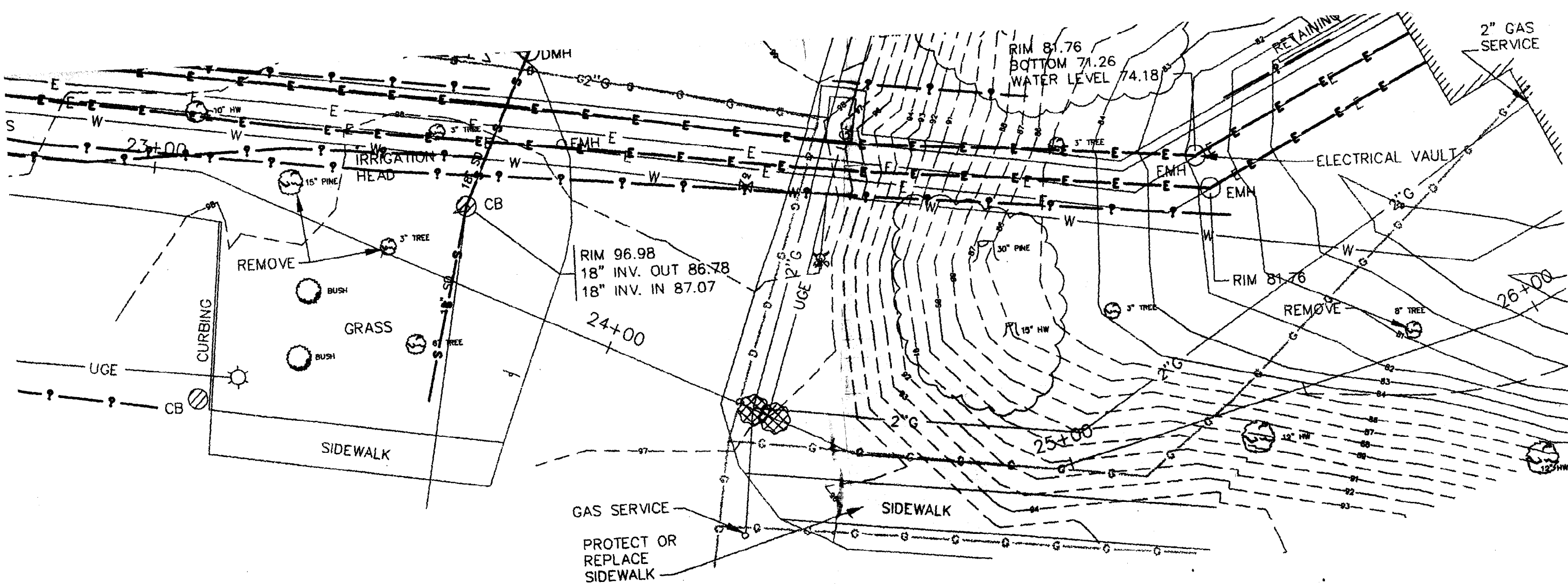
PROTECT OR  
REPLACE  
SIDEWALK

RIM 104.67  
12" INV. OUT 98.5  
10" INV. IN 98.75

RIM 1  
15"  
12"  
12"

ROLLARD

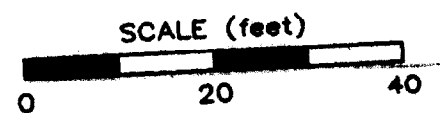




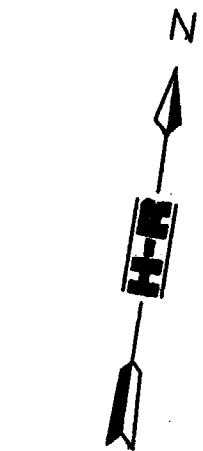
LINE NOT  
 IATED BY HR.  
 I ON BASE PLAN

YDRANT  
 VALVE  
 BASIN  
 XLE

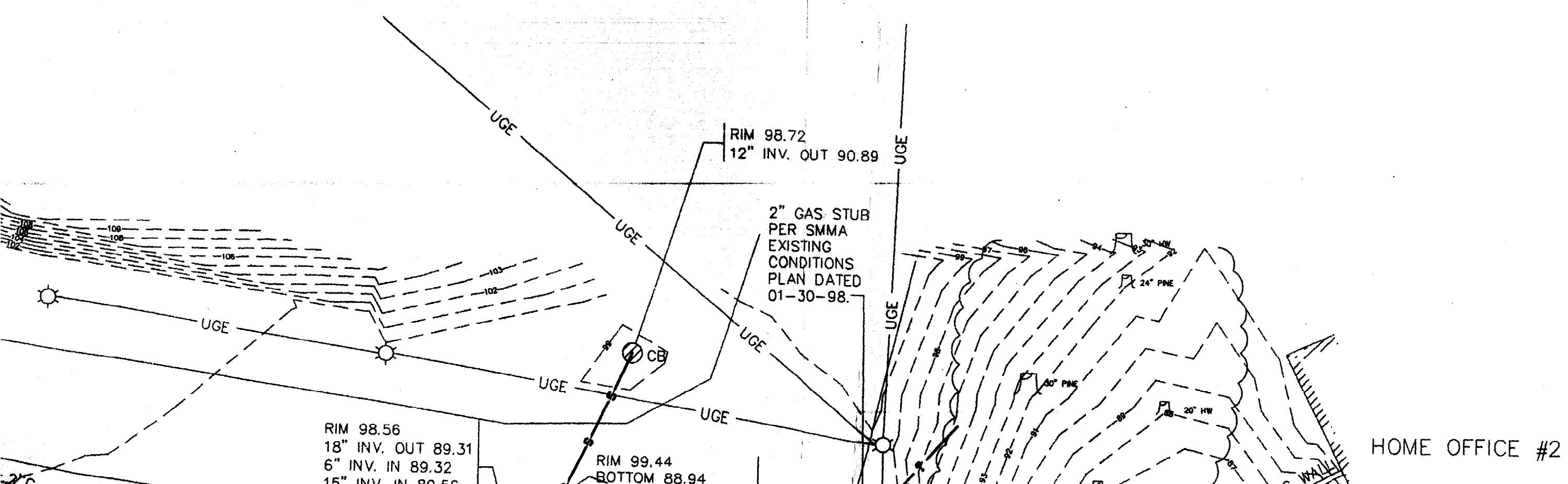
ISED TEST BORING



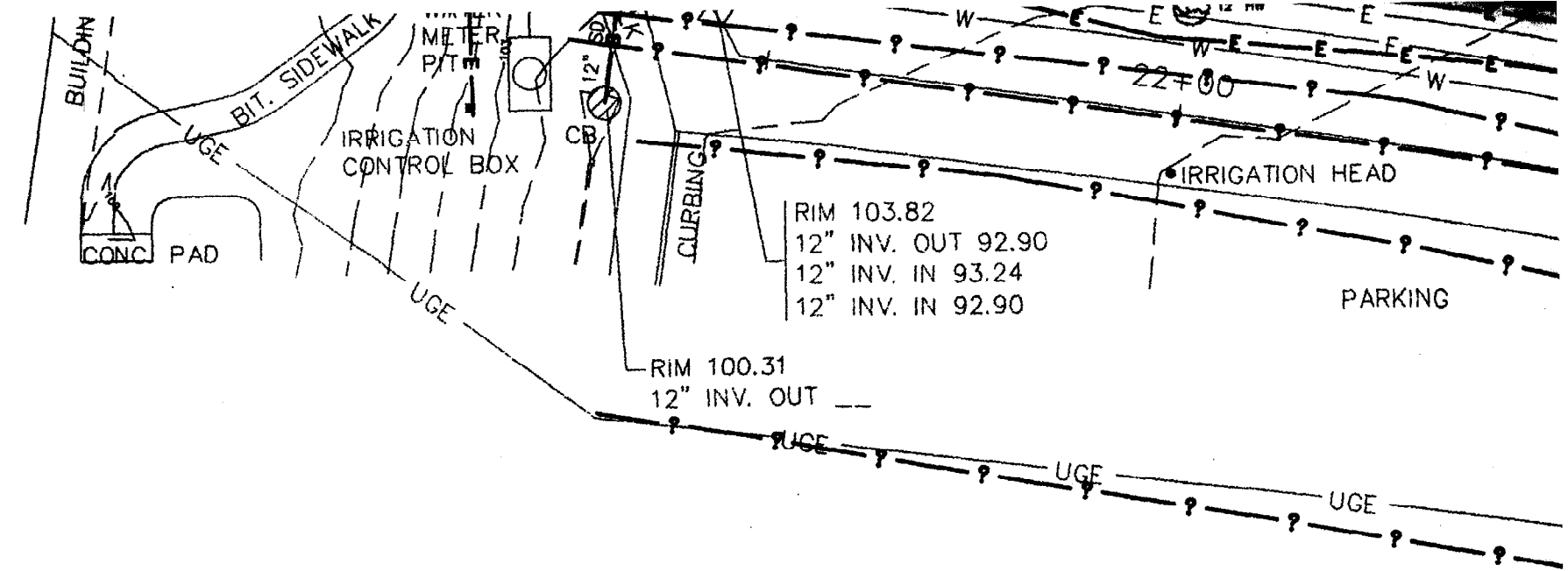
DEPT. OF BUILDINGS INSPECTION CITY OF PORTLAND, ME SEP 8 2003	
<b>PLATE 3</b> <b>UTILITY DESIGNATION SURVEY</b> <b>UNUM LIFE INSURANCE</b> <b>HOME OFFICE CAMPUS</b> <b>SOUTH PORTLAND, MAINE</b>	
FILE 03G46	JULY, 2003
<b>HAGER-RICHTER GEOSCIENCE, INC.</b> <b>SALEM, NEW HAMPSHIRE</b>	



APPROX.



HOME OFFICE #2

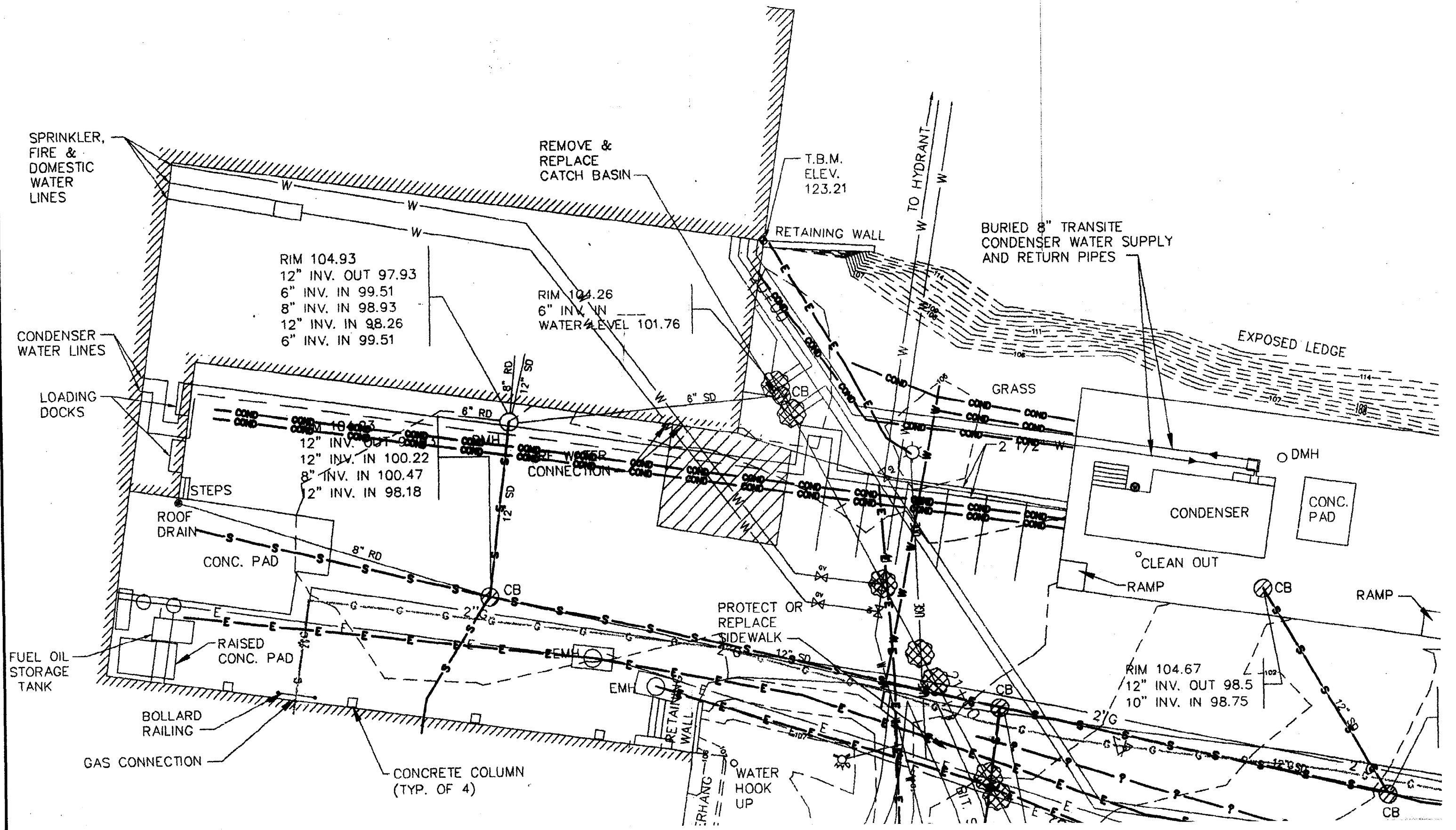


**LEGEND**

— E — E — E —	ELECTRIC LINE DESIGNATED BY HAGER-RICHTER	— W —
— W — W — W —	WATER LINE DESIGNATED BY HAGER-RICHTER	P29 ●
— G — G — G —	FUEL LINE DESIGNATED BY HAGER-RICHTER	↑
— S — S — S —	STORM LINE DESIGNATED BY HAGER-RICHTER	⊗
— COND — COND —	CONDENSER LINE DESIGNATED BY HAGER-RICHTER	⊗
— ? — ? —	UNKNOWN LINE DESIGNATED BY HAGER-RICHTER	○
— 90 —	CONTOUR	⊗
— UGE —	UNDERGROUND ELECTRIC NOT DESIGNATED BY HR, SHOWN ON BASE PLAN	⊗
— E —		⊗

**NOTES:**

1. Modified from site plan provided by DeLuca-Hoffman Associates, Inc.
2. All lines shown as "designated by Hager-Richter" are revised locations, and may differ from those marked in the field.



RIM 104.93  
 12" INV. OUT 97.93  
 6" INV. IN 99.51  
 8" INV. IN 98.93  
 12" INV. IN 98.26  
 6" INV. IN 99.51

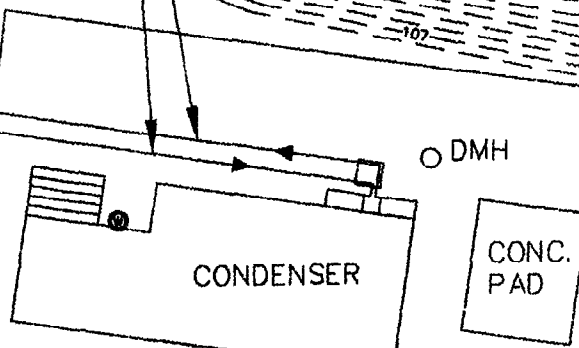
RIM 104.26  
 6" INV. IN  
 WATER LEVEL 101.76

RIM 104.27  
 12" INV. OUT 98.85  
 12" INV. IN 100.22  
 8" INV. IN 100.47  
 12" INV. IN 98.18

RIM 104.67  
 12" INV. OUT 98.5  
 10" INV. IN 98.75

BURIED 8" TRANSITE  
 CONDENSER WATER SUPPLY  
 AND RETURN PIPES

EXPOSED LEDGE



PROTECT OR  
 REPLACE  
 SIDEWALK

WATER  
 HOOK UP

TO HYDRANT

T.B.M.  
 ELEV.  
 123.21

RETAINING WALL

REMOVE &  
 REPLACE  
 CATCH BASIN

SPRINKLER,  
 FIRE &  
 DOMESTIC  
 WATER  
 LINES

CONDENSER  
 WATER LINES

LOADING  
 DOCKS

STEPS

ROOF  
 DRAIN

CONC. PAD

RAISED  
 CONC. PAD

FUEL OIL  
 STORAGE  
 TANK

BOLLARD  
 RAILING

GAS CONNECTION

CONCRETE COLUMN  
 (TYP. OF 4)

EMH

RETAINING  
 WALL

WATER  
 HOOK UP

GRASS

CONDENSER

CONC. PAD

CLEAN OUT

RAMP

RAMP

DMH

CB

CB

CB

CB

CB

CB

CB

CB

CB

CB

CB

CB

CB

CB

CB

CB

CB

CB

CB

CB