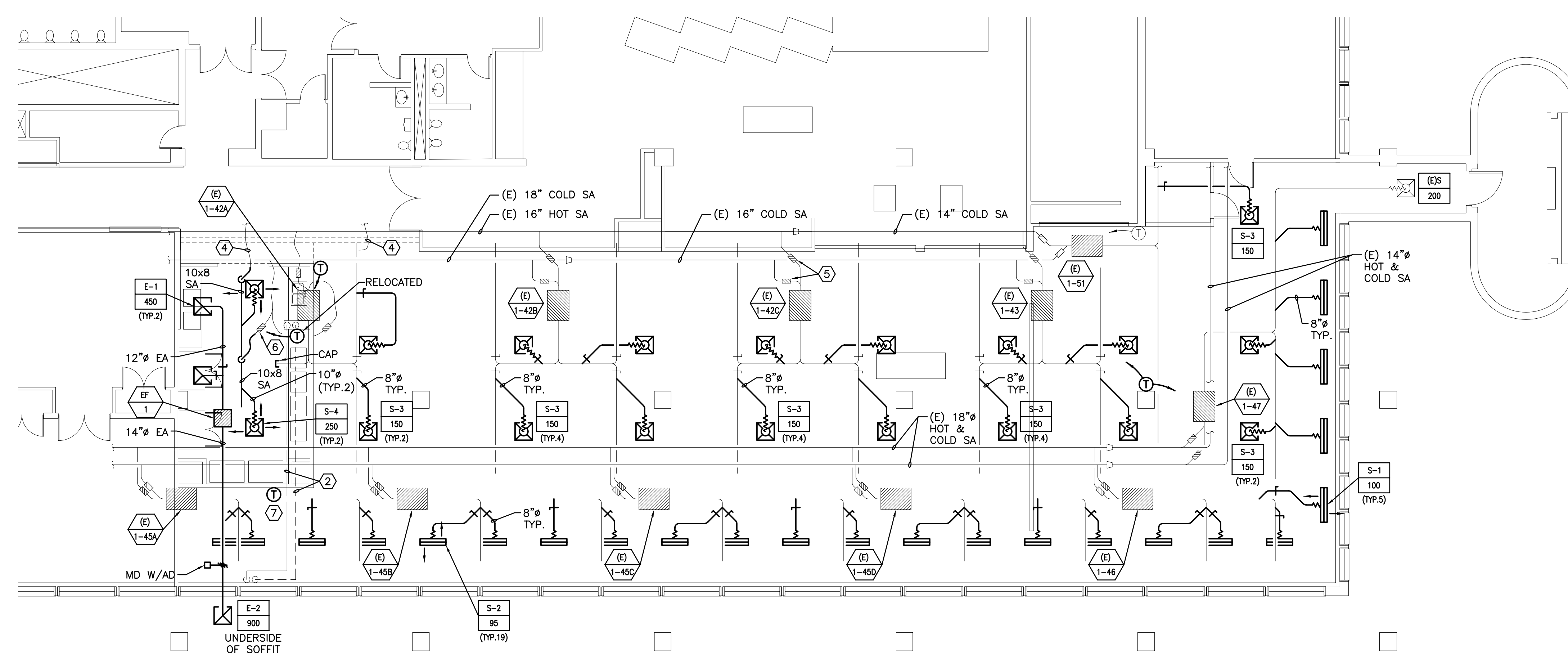


- NOTES:**
- SEE SHEET M-001 FOR LEGEND AND ABBREVIATIONS.
 - CHECK EXISTING DUCTWORK WITH NEW DUCTWORK PLAN AND ELIMINATE ANY REDUNDANT BALANCING DAMPERS. LOOK/LISTEN FOR DUCT LEAKAGE IN EXISTING DUCTWORK AND REPAIR. REPAIR ANY DAMAGED/MISSING DUCT INSULATION.

- KEYED NOTES:**
- EXISTING MITCO VALVES, TYPICAL TWO PER ZONE EXCEPT FOR SINGLE MITCO VALVE PROVIDING COOLING ONLY TO PANTRY.
 - EXISTING HEATING HOT WATER PIPING TO REMAIN.
 - REMOVE LIGHT TROFER SUPPLY AND BRANCH DUCT. CAP AND SEAL REMAINING SUPPLY DUCT AIRTIGHT.
 - BALANCE CORRIDOR SUPPLY AIR TO MAINTAIN CURRENT CFM.
 - EXISTING MITCO VALVES, (TYPICAL EACH ZONE) CLEAN, ADJUST, AND VERIFY PROPER OPERATION.
 - EXISTING MITCO VALVE SERVING COOLING ONLY ZONE CLEAN, ADJUST, VERIFY PROPER OPERATION AND BALANCE.
 - T-STAT FOR ZONES 1-45A AND 1-45B.
 - FOR NEW CEILING ALTERNATE - SEE REFLECTED CEILING PLAN FOR REVISED DIFFUSER LOCATIONS.

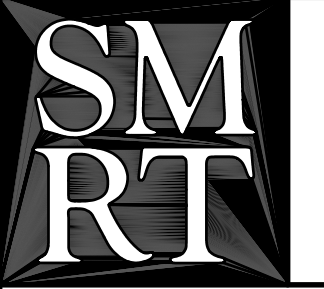


H1 HVAC DEMOLITION PLAN

1/8"=1'-0"

A1 HVAC DUCTWORK PLAN ⑧

1/8"=1'-0"

0	ISSUED FOR CONSTRUCTION	6-2-03
REV.	DESCRIPTION	DATE
ISSUED FOR CONSTRUCTION 6-2-03		
CURRENT ISSUE STATUS:		
 ARCHITECTURE ENGINEERING PLANNING SMRT 144 Fore Street/P.O. Box 618 Portland, Maine 04104 tel. (207) 772-3846 fax. (207) 772-1070		
UNUMPROVIDENT HO1 THE BEACON PORTLAND, ME.		
HVAC DEMOLITION & HVAC DUCTWORK PLANS		
PROJECT:		
SHEET TITLE:		
SCALE:	AS NOTED	DATE: 6-2-03
PROJECT MANAGER:	JLH	GRAPHIC SCALE: 0" 1"
JOB CAP/DRAWN:	RJL/BGG	
A/E OF RECORD:	LPA	SHEET No.
SMRT CAD FILE:	M-101-02140	M-101
PROJECT No.	02140	