

WALL TYPES:

1 PARTITION- 3 5/8" METAL STUD WALL WITH SOUND BATT INSULATION AND 1 LAYER 5/8" TYPE X" GWB. EA. SIDE TO 6" ABOVE CEILING GRID.

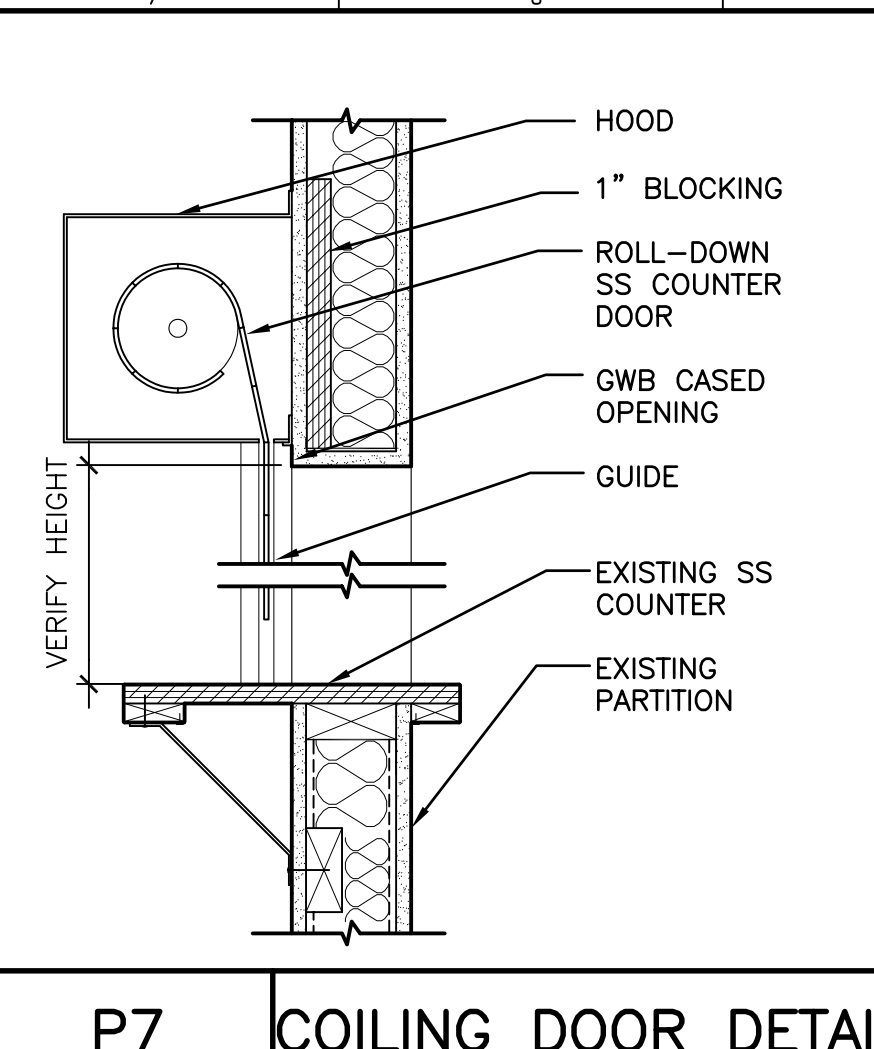
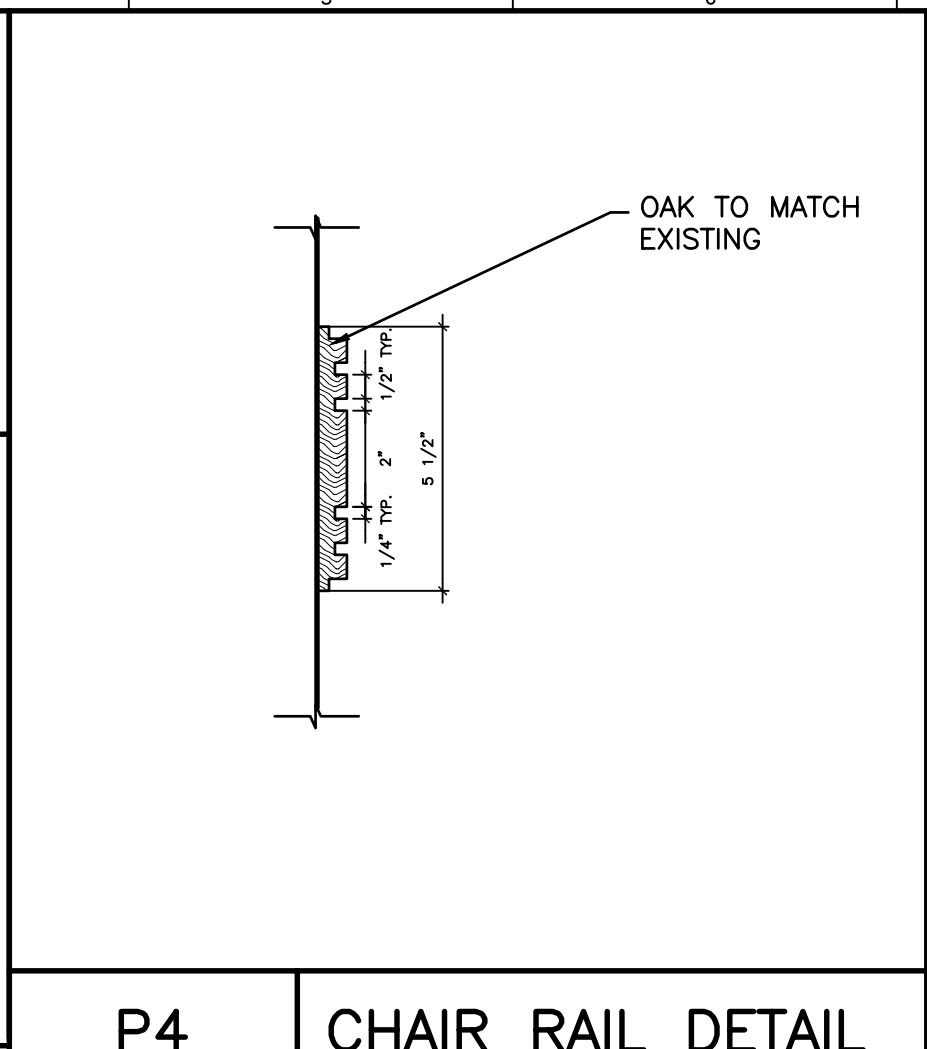
2 CHASE WALL- 2 ROWS 3 5/8" METAL STUD WALL WITH SOUND BATT INSULATION AND 1 LAYER 5/8" TYPE X" GWB. EA. SIDE TO 6" ABOVE CEILING GRID.

1/2" SOLID SURFACE ON 3/4" PLYWOOD TOP

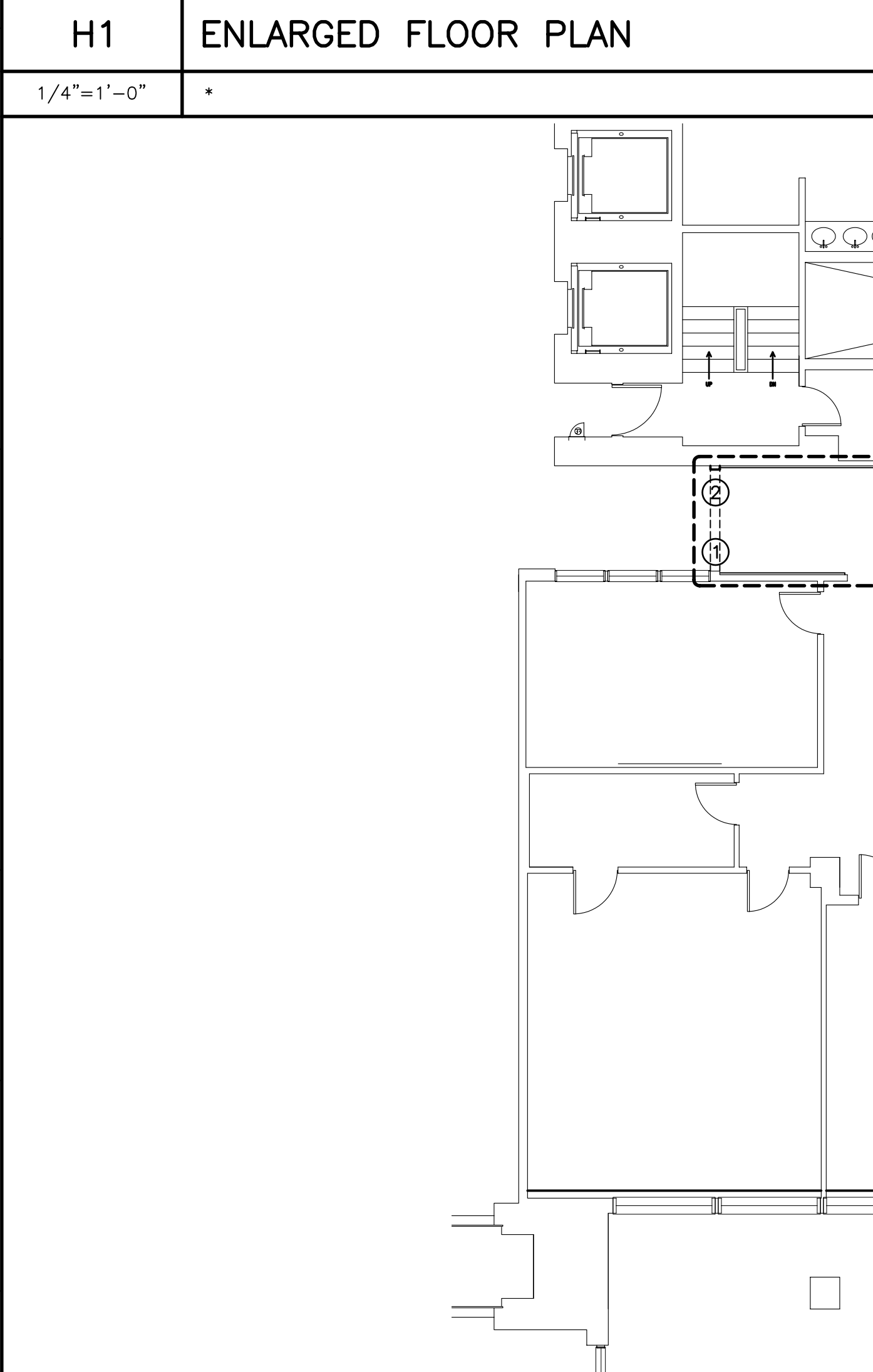
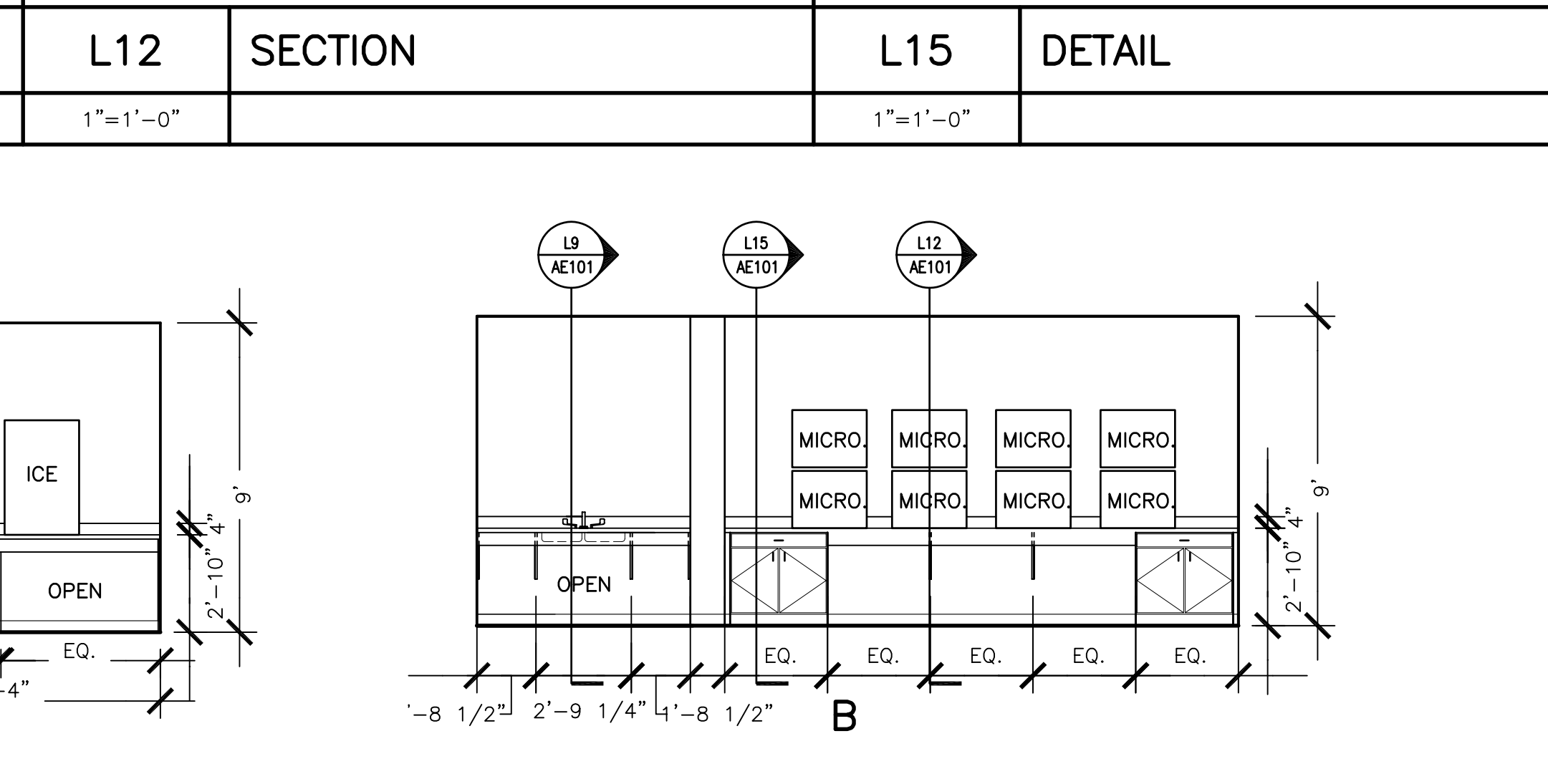
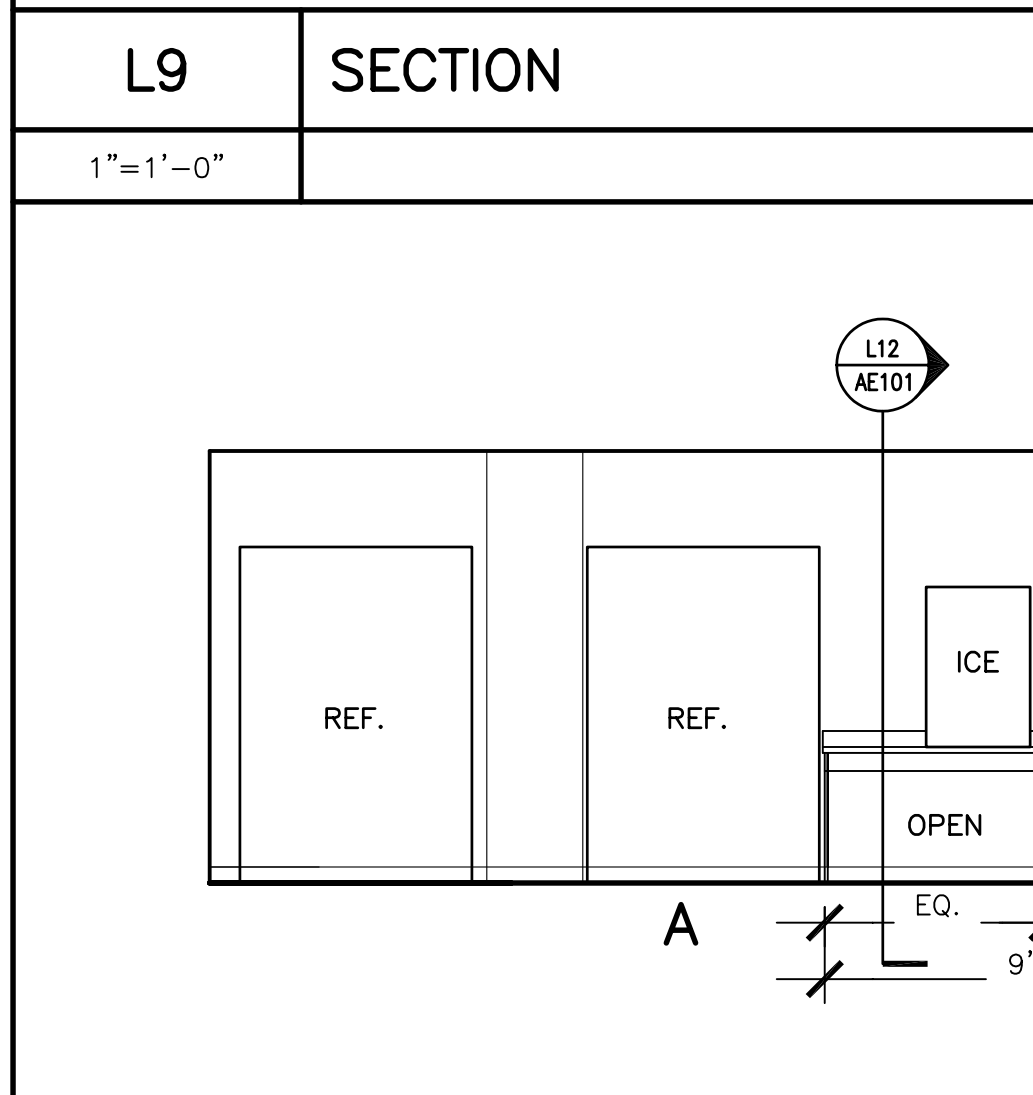
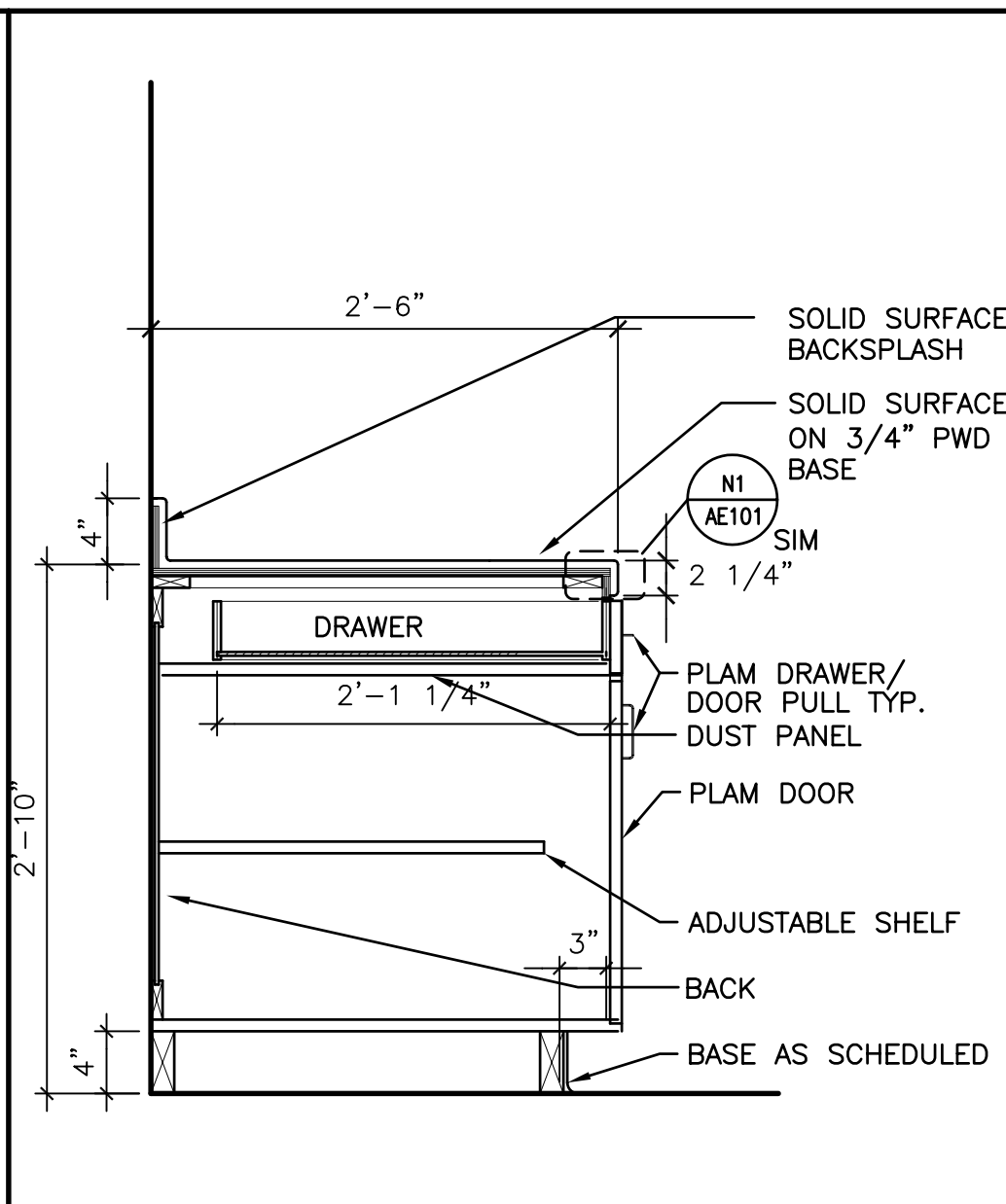
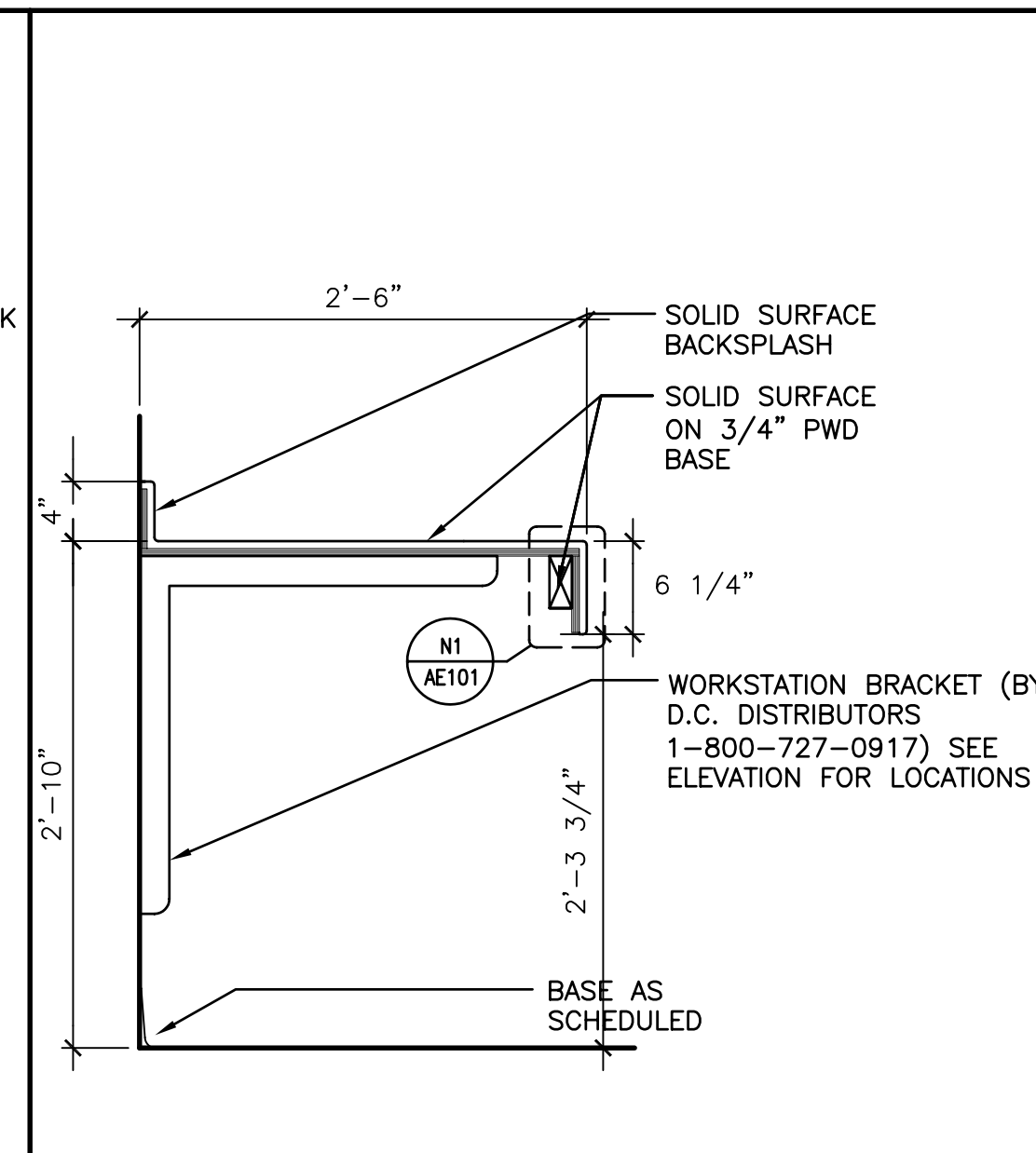
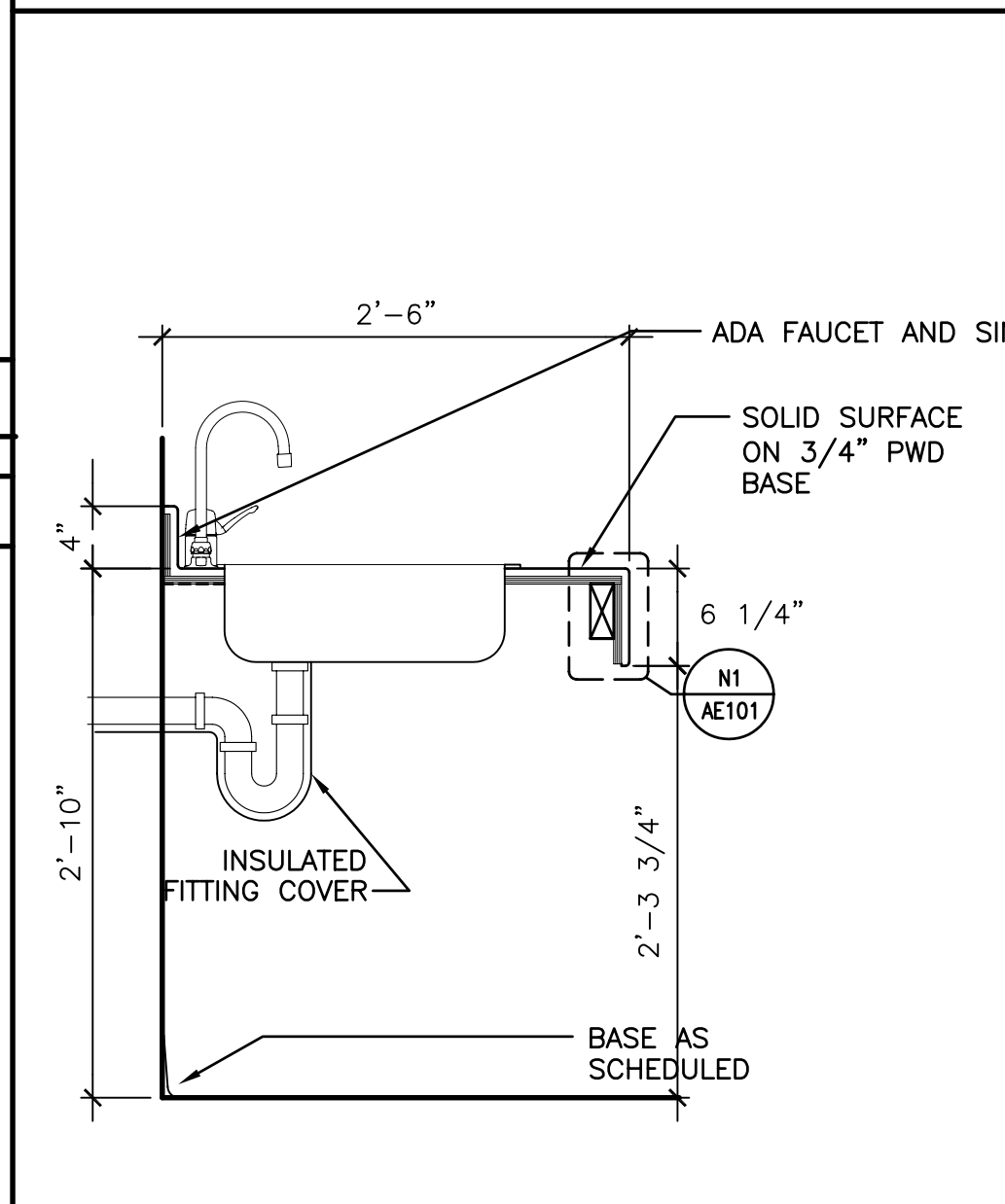
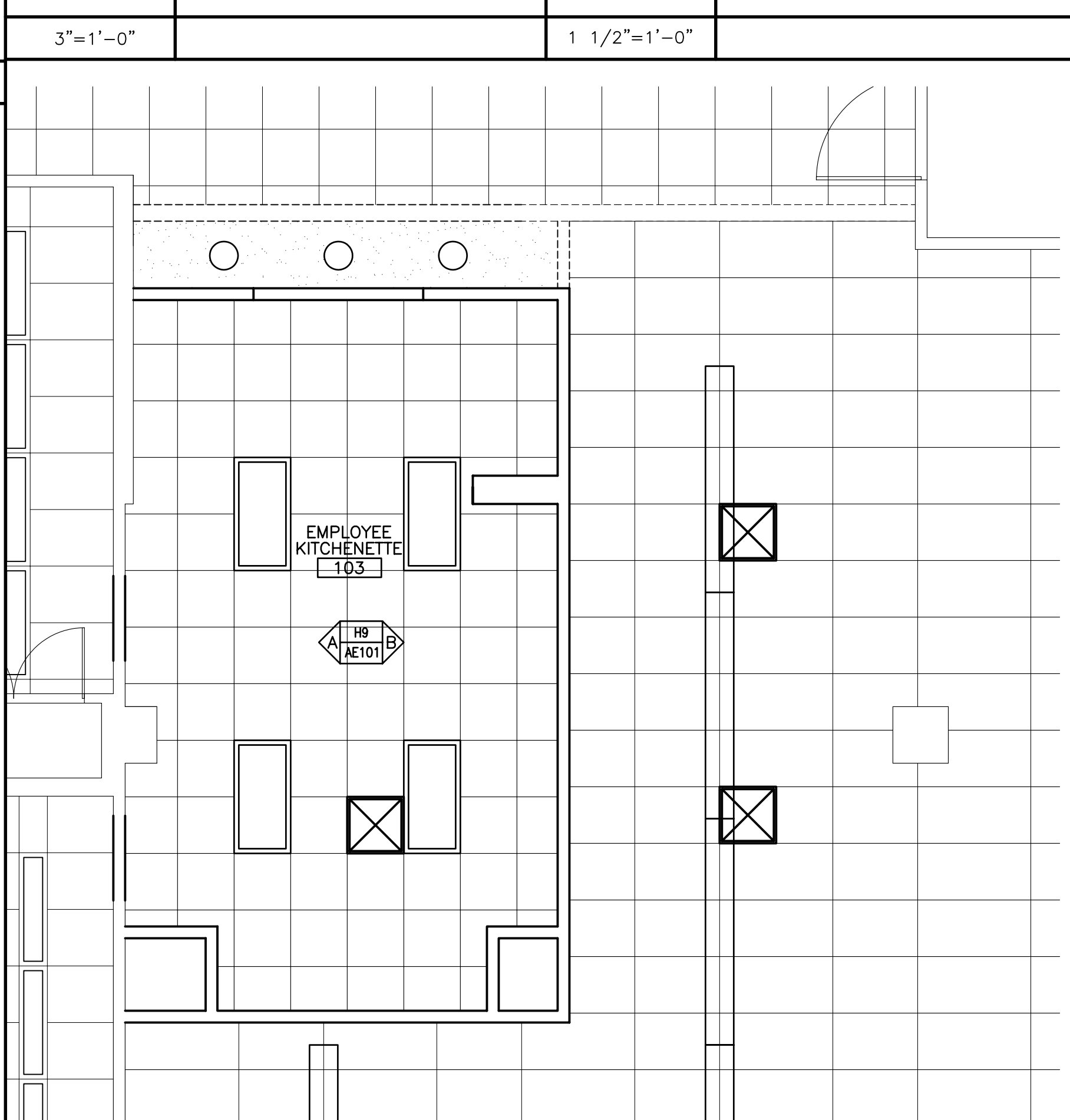
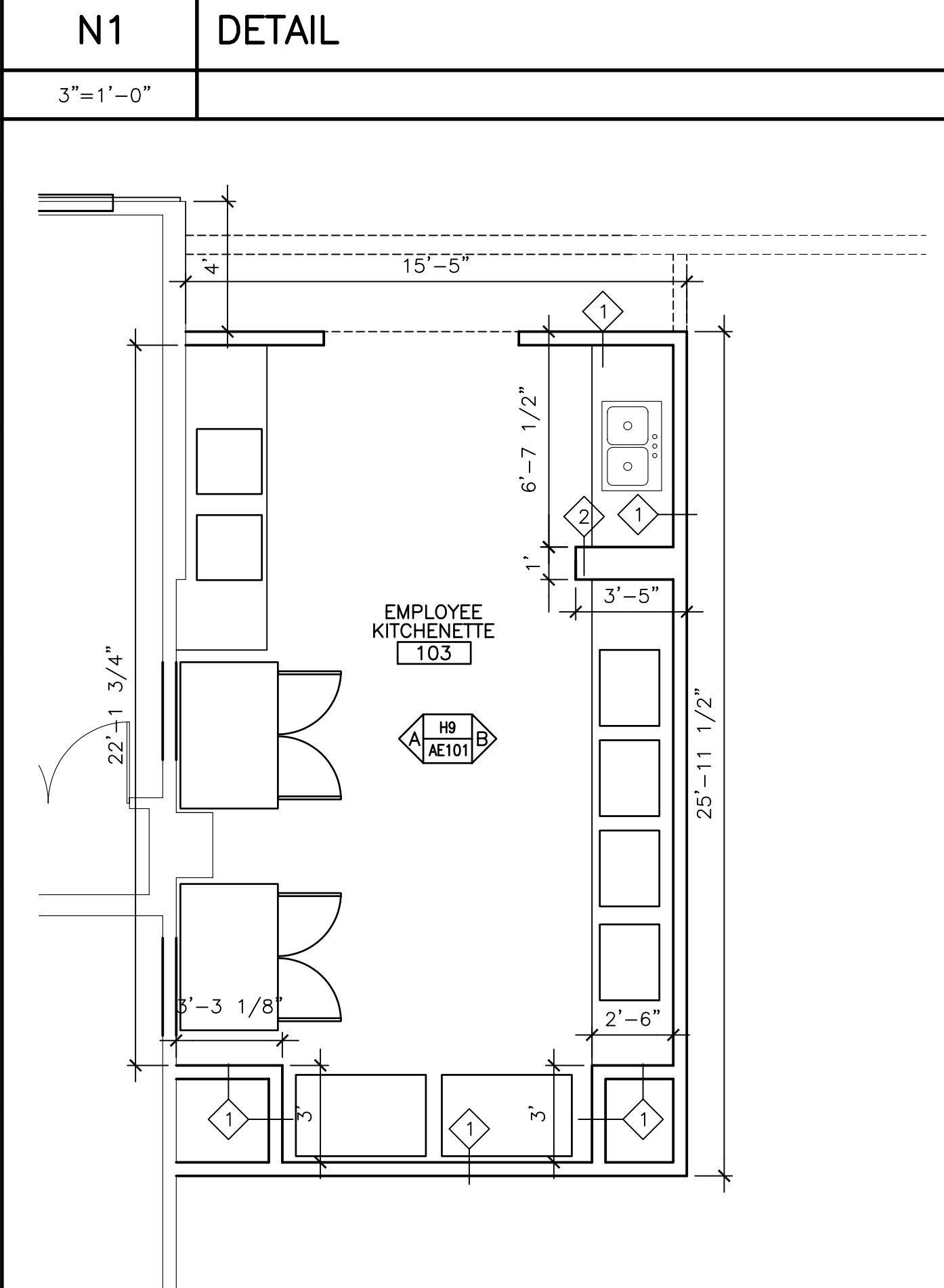
2X4 BEAR ENDS ON 16 GAGE STUD AT EACH END

COUNTERSUNK SCREWS @ 1'-0" O.C.

1/2" SOLID SURFACE ON 3/4" PLYWOOD APRON W/ 1/4" EDGE CHAMFER



ROOM FINISH SCHEDULE											
ROOM NUMBER	ROOM NAME	FLOOR	BASE	WALLS				CEILING		ROOM NUMBER	REMARKS
				NORTH	SOUTH	EAST	WEST	MATERIAL	HEIGHT		
101	CORRIDOR	CPT	RB	GWB/PT	GWB/PT	GWB/PT	GWB/PT	EXIST	EXIST	101	
102	CAFETERIA	CPT	RB	GWB/PT	GWB/PT	GWB/PT	GWB/PT	EXIST*	EXIST*	102	*SEE AE102 FOR ALTERNATE 1.
103	EMPLOYEE KITCHENETTE	CT	CT	GWB/PT	GWB/PT	GWB/PT	GWB/PT	ACT	9'-0"	103	
104	CONFERENCE	EXIST	EXIST	PT	PT	GWB/PT	PT	EXIST	EXIST	104	
105	CONFERENCE	EXIST	EXIST	PT	PT	GWB/PT	PT	EXIST	EXIST	105	



- SYMBOL LEGEND**
- 2x4 SUSPENDED CEILING PANEL AND GRID ASSEMBLY.
 - GWB CEILING.
 - 2x2 LAY-IN LIGHT FIXTURE.
 - 2x4 LAY-IN LIGHT FIXTURE.
 - 1x4 LIGHT FIXTURE.
 - FLOURESCENT STRIP FIXTURE.
 - DOWN LIGHT.
 - CEILING MOUNTED EXIST LIGHT.
 - RETURN AIR GRILLE.
 - SUPPLY AIR GRILLE.
 - EXHAUST AIR GRILLE.
 - SPRINKLER HEAD.
 - CEILING MOUNTED SPEAKER.
 - CEILING MOUNTED SMOKE DETECTOR.

- FINISH ABBREVIATIONS**
- ACT ACOUSTICAL CEILING TILE
 - CPT CARPET
 - CT CERAMIC TILE
 - GWB GYPSUM WALLBOARD
 - PTD PAINTED QUARRY TILE
 - Q.T. VINYL TILE
 - VCT VINYL TILE
 - RB RUBBER BASE

- FINISHES:**
1. CARPET TILE -RE: AF101
 2. QUARRY TILE- DALTILE, "BEIGE" OQ60
 3. GROUT-HYDROMENT, CHAMPAGNE SIZZ
 4. SOLID SURFACE MATERIAL- CORIAN "TUMBLD GLASS"
 5. PLASTIC LAMINATE- PIONITE, "TAUPE SERENITY"
 6. PLASTIC LAMINATE- PIONITE, "TAUPE SERENITY" AG441 SUEDE
 7. RESILIENT BASE-JOHNSONITE BLACK
 8. PAINT COLORS- TO BE DETERMINED
 9. ACT- ARMSTRONG CORTEGA, #770, 2'X2', SQUARE EDGE
 10. ACT FOR ALTERNATE 1-ARMSTRONG "ULTIMA", 2'X4', #1913, SQUARE EDGE

- KEY NOTES:**
1. INSTALL NEW THRESHOLD.
 2. INSTALL NEW BRAKE METAL FRAME AT TOP AND SIDE TO MATCH EXISTING.
 3. INSTALL NEW OAK CHAIR RAIL (SEE P4/AE101).
 4. INFILL WALL TO MATCH EXISTING.
 5. INSTALL NEW GYP./METAL STUD SOFFIT TO MATCH EXISTING.
 6. INSTALL NEW 6" OPENING CENTERED IN EMPLOYEE KITCHENETTE W/ HOLLOW METAL FRAME.
 7. INSTALL NEW STAINLESS STEEL ROLL DOWN DOOR.
 8. INSTALL RELOCATED DISPLAY BOARD AND INFILL WALL BELOW.
 9. INSTALL NEW FLOOR FINISH AND BASE.
 10. REPAIR/PATCH ALL WALL SURFACES AND PAINT.

0	ISSUED FOR CONSTRUCTION	6-2-03
REV.	DESCRIPTION	DATE

ISSUED FOR CONSTRUCTION 6-2-03

CURRENT ISSUE STATUS:

PROJECT NORTH

SMRT ARCHITECTURE ENGINEERING PLANNING

SMRT
144 Fore Street/P.O. Box 618
Portland, Maine 04104
tel. (207) 773-3846
fax. (207) 772-1070

UNUMPROVIDENT H01 THE BEACON
PORTLAND, ME.

PROJECT: **FLOOR PLAN, REFLECTED CEILING PLAN & INTERIOR ELEVATIONS**

SHEET TITLE:	1/8"=1'-0"	DATE:	6-2-03
PROJECT MANAGER:	JLH	GRAPHIC SCALE:	0" 1"
JOB CAP/DRAWN:	RJL	SHEET No.	
A/E OF RECORD:	JLH	PROJECT No.	02140
SMRT CAD FILE:	AE101-02140		
PROJECT No.	02140		

AE101