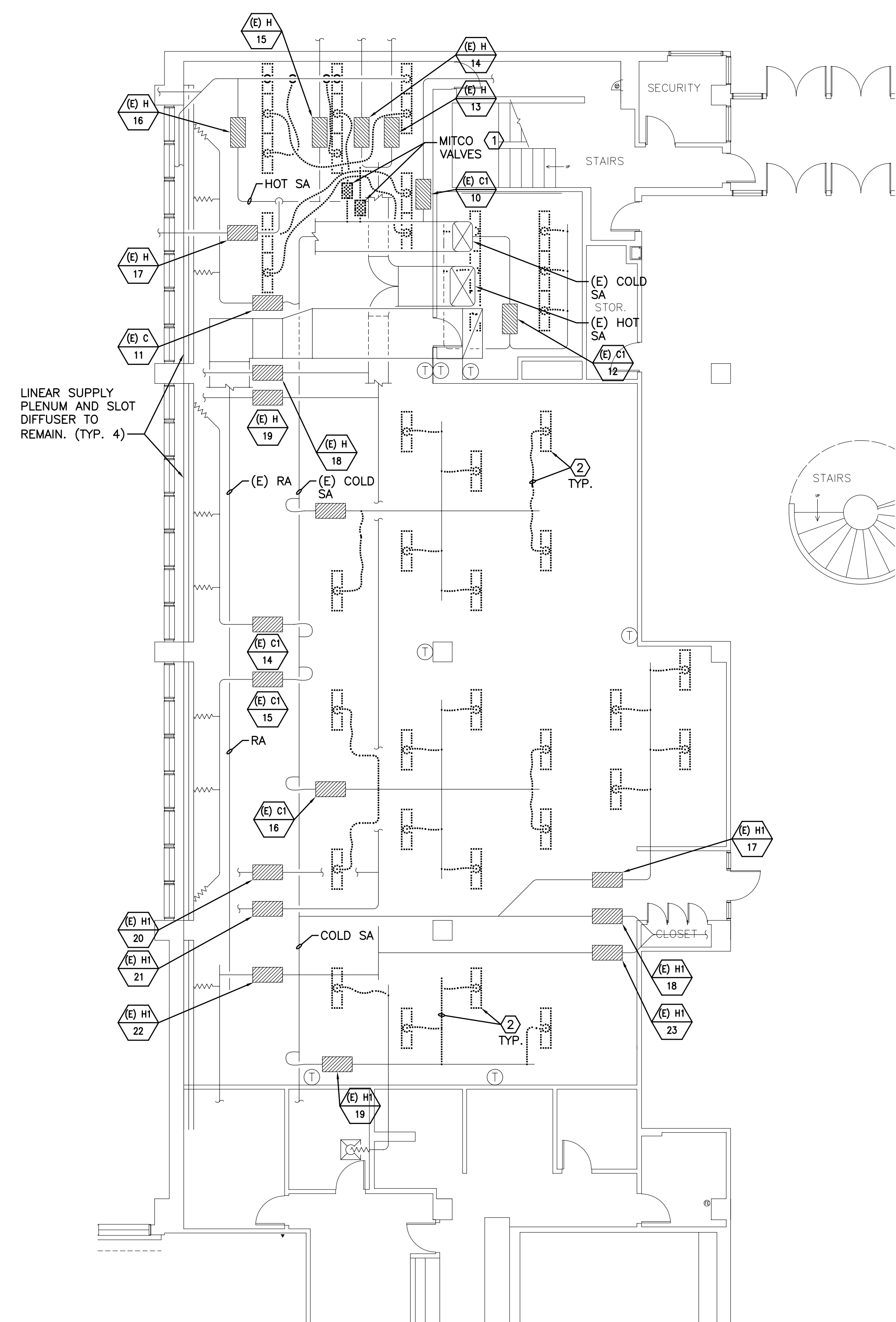


NOTES:

1. SEE SHEET M-001 FOR LEGEND AND ABBREVIATIONS.
2. CONTRACTOR TO LOOK/LISTEN FOR LEAKS IN EXISTING DUCTWORK. REPAIR AND SEAL AS REQUIRED.

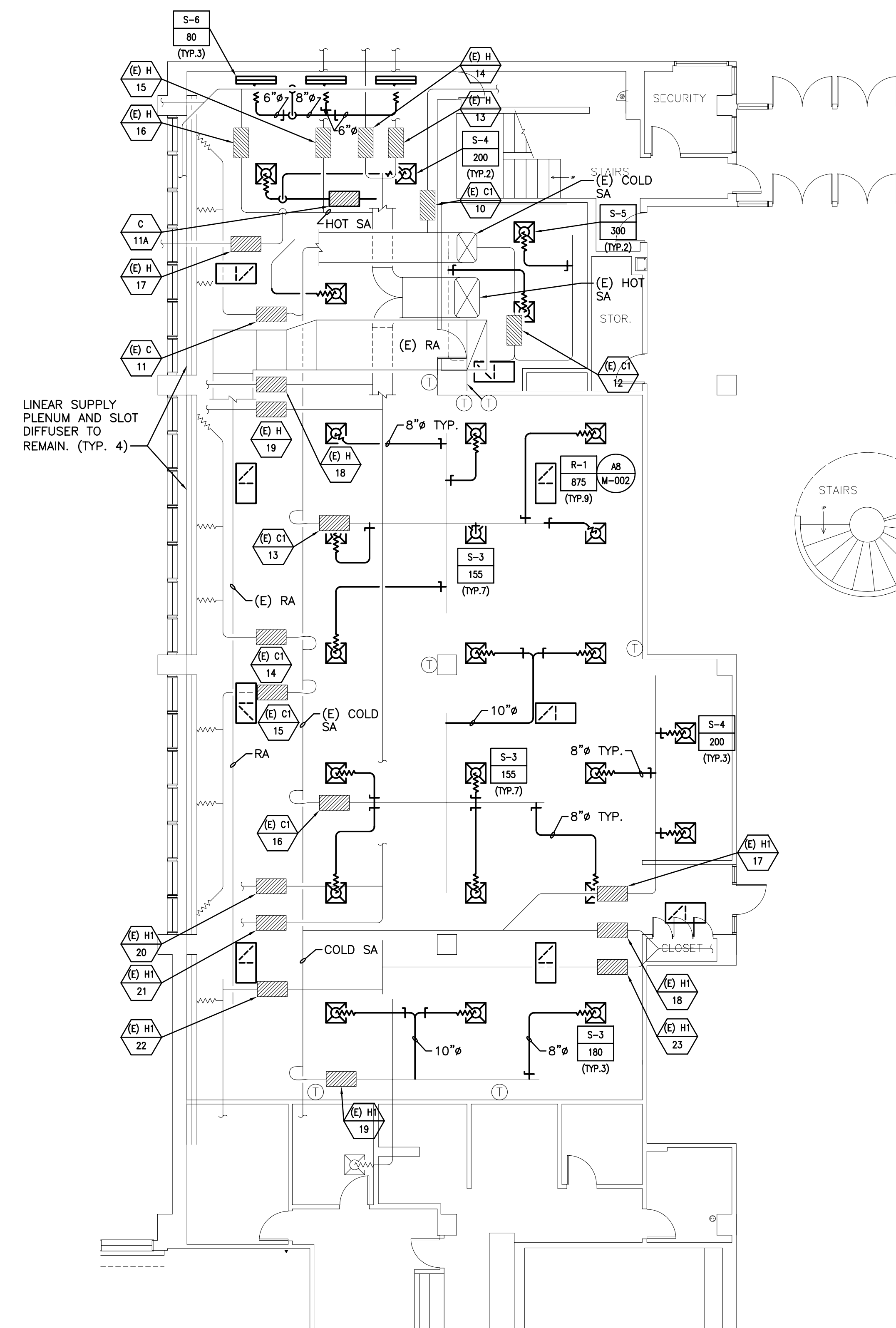
KEYED NOTES:

- ① REMOVE MITCO VALVES, ASSOCIATED DUCTWORK, AND LIGHT TROFFER DIFFUSERS. CAP AND SEAL MAIN SUPPLY DUCT AIRTIGHT, STORE MITCO VALVES AT UNUM'S DIRECTION.
- ② REMOVE LIGHT TROFFER DIFFUSERS AND BRANCH DUCTWORK. CAP AND SEAL SUPPLY DUCT.



A1 DEMOLITION PLAN

1/8"=1'-0"



A9 DUCTWORK PLAN

1/8"=1'-0"

0	ISSUED FOR CONSTRUCTION - PHASE 2	6-2-03
REV.	DESCRIPTION	DATE

**ISSUED FOR CONSTRUCTION
PHASE 2 6-2-03**

CURRENT ISSUE STATUS:		

SM RT ARCHITECTURE ENGINEERING PLANNING
 SMRT
 144 Fore Street/P.O. Box 618
 Portland, Maine 04104
 tel. (207) 772-3846
 fax. (207) 772-1070

**UNUMPROVIDENT
H01 OPEN OFFICE RENOVATIONS**
 PORTLAND, ME.

**PHASE 2 - DEMOLITION &
DUCTWORK PLANS**

SHEET TITLE:	SCALE: 1/8"=1'-0"	DATE: 6-2-03
PROJECT MANAGER: JLH	GRAPHIC SCALE: 0" 1"	
JOB CAP/DRAWN: R/L/BGG		
A/E OF RECORD: LPA	SHEET No.	
SMRT CAD FILE: M-102-03051	M-102	
PROJECT No. 03051		