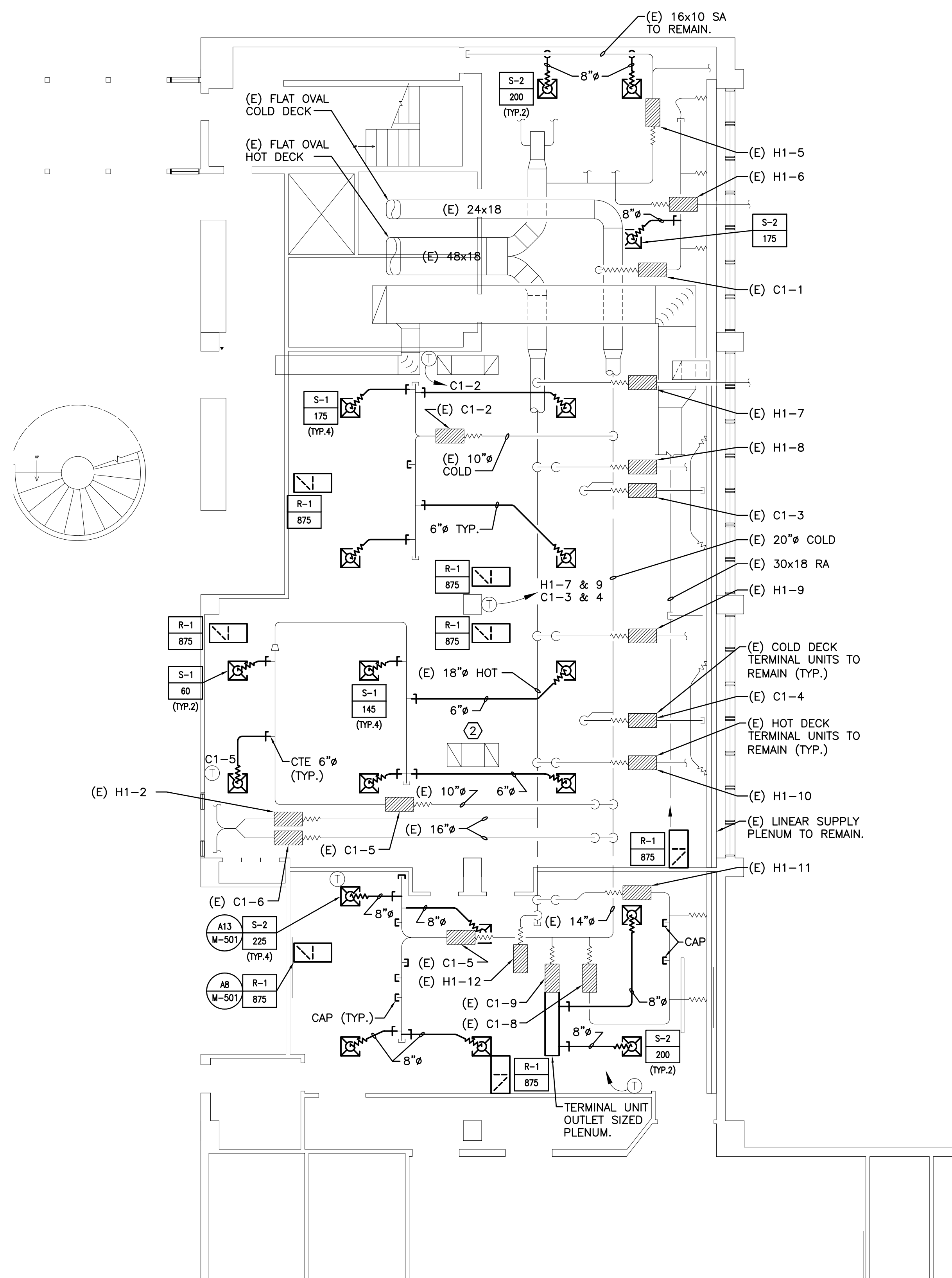
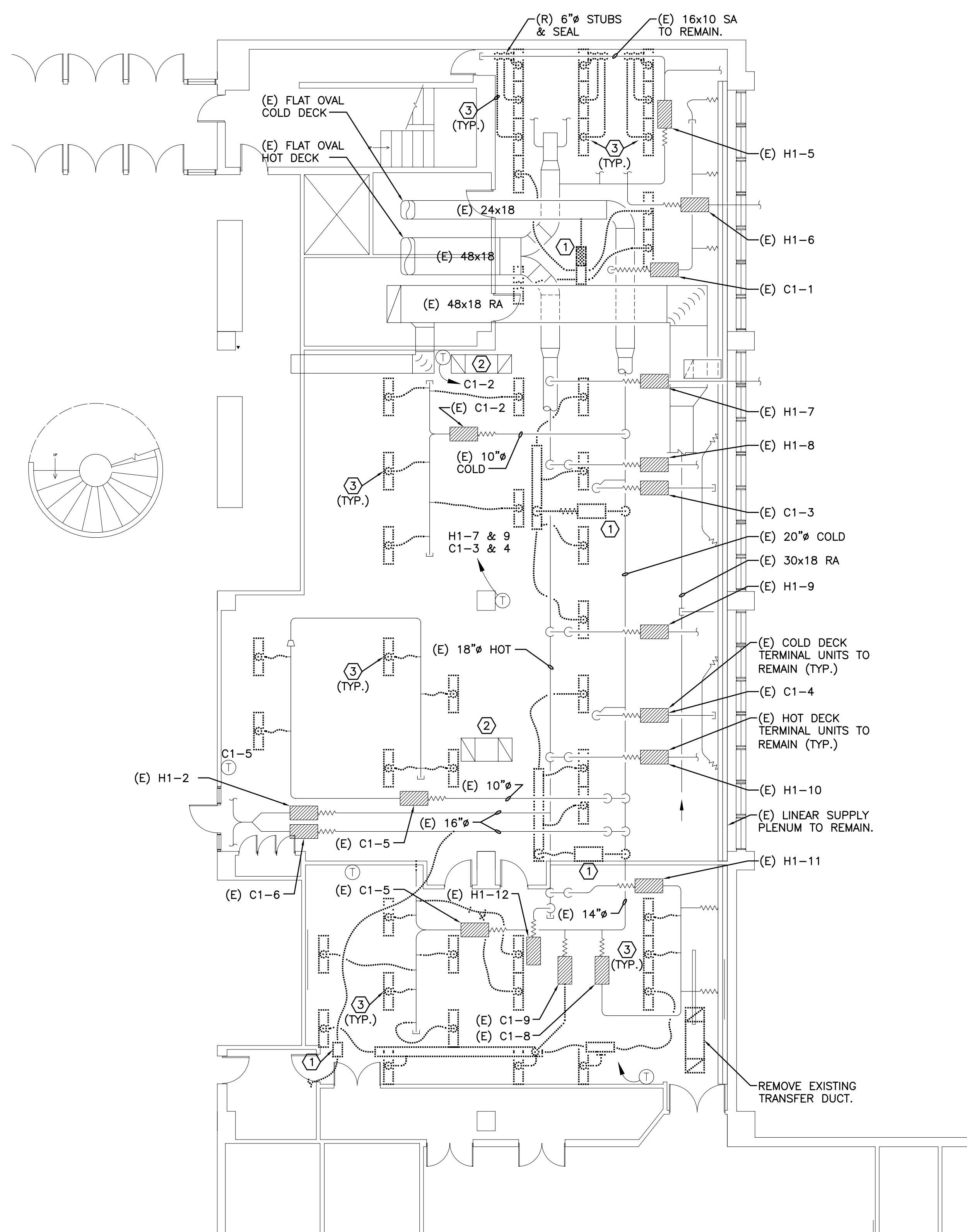


NOTES:

1. SEE SHEET M-001 FOR LEGEND AND ABBREVIATIONS.
2. CONTRACTOR SHALL LOOK/LISTEN FOR LEAKS IN EXISTING DUCTWORK. REPAIR AND SEAL AS REQUIRED.

KEYED NOTES:

- ① REMOVE EXISTING MITCO VALVE, ASSOCIATED DUCTWORK, FLEXIBLE DUCT BRANCHES AND LIGHT TROFFER DIFFUSERS. CAP AND SEAL SUPPLY DUCT AT MAIN. STORE OT OWNERS DIRECTION.
- ② EXISTING TRANSFER DUCTS TO REMAIN.
- ③ REMOVE EXISTING FLEXIBLE BRANCH DUCTS AND LIGHT TROFFER DIFFUSERS.



A1 HVAC DUCTWORK DEMOLITION PLAN

A9 HVAC DUCTWORK PLAN

0	ISSUED FOR CONSTRUCTION-PHASE 1	5-21-03
REV.	DESCRIPTION	DATE

**ISSUED FOR CONSTRUCTION
PHASE 1 5-21-03**

CURRENT ISSUE STATUS:		

SM RT ARCHITECTURE ENGINEERING PLANNING
 SMRT
 144 Fore Street/P.O. Box 618
 Portland, Maine 04104
 tel. (207) 772-3846
 fax. (207) 772-1070

**UNIMPROVIDENT
H01 OPEN OFFICE RENOVATIONS**
 PORTLAND, ME.

**PHASE 1- DEMOLITION &
DUCTWORK PLANS**

SHEET TITLE:	SCALE: 1/8"=1'-0"	DATE: 5-21-03
PROJECT MANAGER: JLH	GRAPHIC SCALE: 0" 1"	
JOB CAP/DRAWN: RjL/BGG		
A/E OF RECORD: DCM	SHEET No.	
SMRT CAD FILE: M-101-03051		
PROJECT No. 03051		M-101