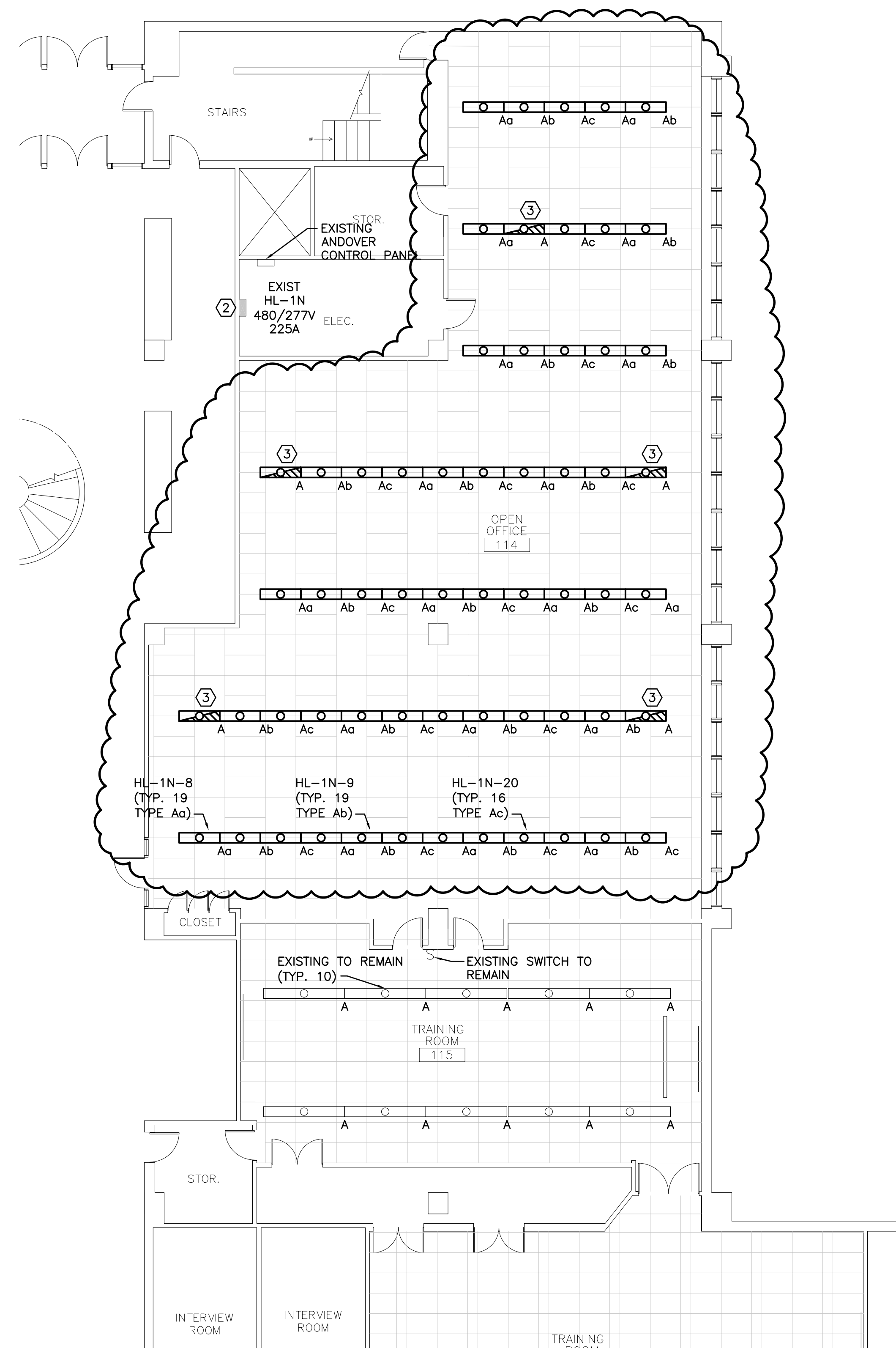


A1 DEMOLITION PLAN

1/8"=1'-0"



A9 FLOOR PLAN

1/8"=1'-0"

NOTES:

1. SEE SHEET E-001 FOR LEGEND AND GENERAL NOTES.
2. REMOVE EXISTING 1x4 & 1x3 FIXTURES AS INDICATED. RE-USE BRANCH CIRCUITS FOR NEW LIGHTING.
3. LIGHTS TO BE CONTROLLED (SWITCHED) BY ANDOVER CONTROL SYSTEM. EACH BRANCH CIRCUIT TO BE CONTROLLED AS A SEPARATE ZONE AND BE WIRED SO THAT EVERY THIRD 4' SECTION TO SWITCH SEPARATELY TO ALLOW FOR THREE DIFFERENT LIGHT LEVELS.
4. EXISTING EXIT SIGNS TO REMAIN AS IS.
5. LIGHT FIXTURES SHOWN AS 4' TO SHOW SWITCHING CONFIGURATION AND CIRCUIT WIRING. COORDINATE WITH LIGHTING SUPPLIER FOR EXACT LENGTH AND CONFIGURATION OF FIXTURES.

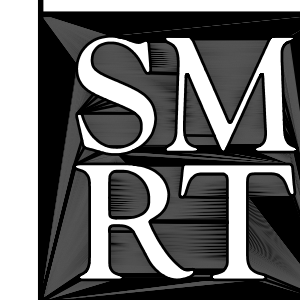
KEYED NOTES:

- ① REMOVE SWITCHES FOR RECESSED LIGHTS AND LEAVE EXISTING SWITCH FOR INDIRECT PENDANT LIGHTS.
- ② RE-USE 6 SPARE CIRCUIT BREAKERS IN PANELBOARD HL-1N TO FEED NEW LIGHTS.
- ③ RE-USE EXISTING EMERGENCY LIGHTING BRANCH CIRCUIT IN OPEN OFFICE 114 FOR NEW LIGHTS SHOWN. FIELD VERIFY THAT BRANCH CIRCUIT HAS CAPACITY FOR ADDITIONAL (300 WATT) LOAD.

2	ISSUED FOR SI-2	6-9-03
1	ISSUED FOR SI-1	6-2-03
0	ISSUED FOR CONSTRUCTION-PHASE 1	5-21-03
REV.	DESCRIPTION	DATE

**ISSUED FOR SI-2
6-9-03**

CURRENT ISSUE STATUS:



ARCHITECTURE ENGINEERING PLANNING
SMRT
144 Fore Street/P.O. Box 618
Portland, Maine 04104
tel. (207) 772-3846
fax. (207) 772-1070

**UNUMPROVIDENT
H01 OPEN OFFICE RENOVATIONS**
PORTLAND, ME.

**PHASE 1-
ELECTRICAL PLAN**

SHEET TITLE:	1/8"=1'-0"	DATE:	5-21-03
PROJECT MANAGER:	JLH	GRAPHIC SCALE:	0" 1"
JOB CAP/DRAWN:	RJL/JAC	A/E OF RECORD:	DJT
SMRT CAD FILE:	E-101-03051	SHEET No.	E-101
PROJECT No.	03051		