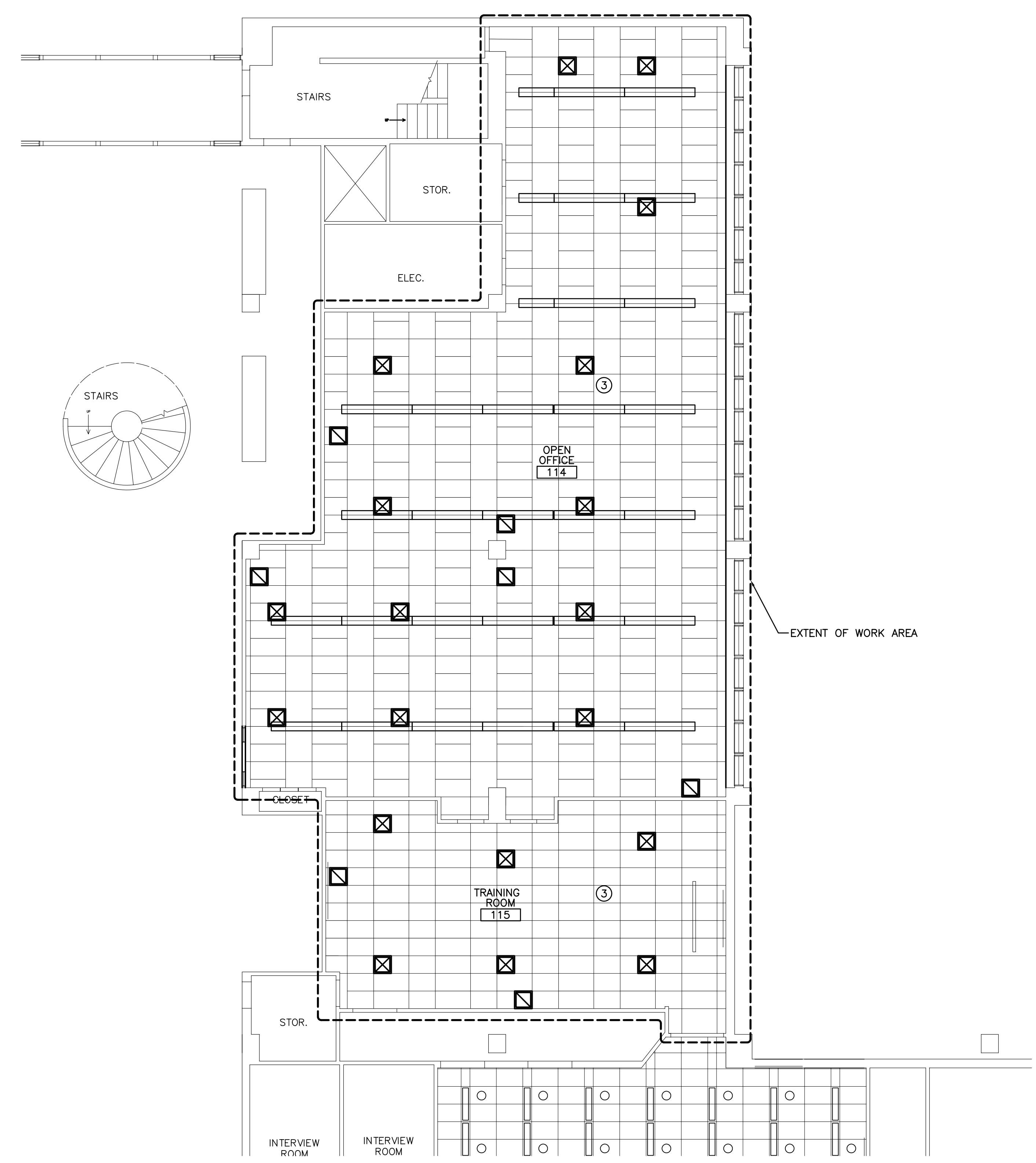
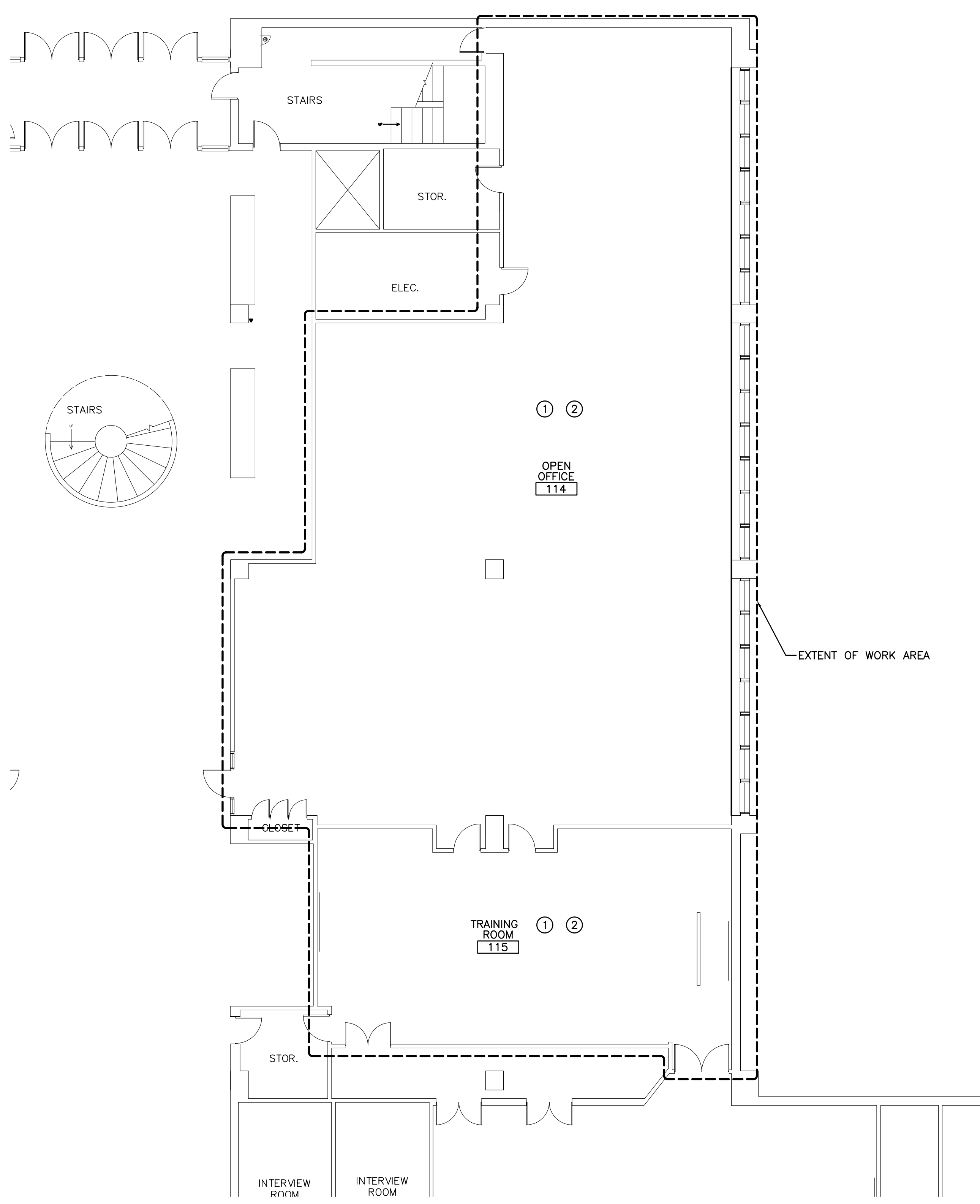


| ROOM FINISH SCHEDULE |               |       |      |        |        |        |        |          |        |             |         |
|----------------------|---------------|-------|------|--------|--------|--------|--------|----------|--------|-------------|---------|
| ROOM NUMBER          | ROOM NAME     | FLOOR | BASE | WALLS  |        |        |        | CEILING  |        | ROOM NUMBER | REMARKS |
|                      |               |       |      | NORTH  | SOUTH  | EAST   | WEST   | MATERIAL | HEIGHT |             |         |
| 114                  | OPEN OFFICE   | CPT-1 | RB   | GWB/PT | GWB/PT | GWB/PT | GWB/PT | ACT      | 9'-0"  | 114         |         |
| 115                  | TRAINING ROOM | CPT-2 | RB   | GWB/PT | GWB/PT | GWB/PT | GWB/PT | ACT      | 9'-0"  | 115         |         |
|                      |               |       |      |        |        |        |        |          |        |             |         |
|                      |               |       |      |        |        |        |        |          |        |             |         |
|                      |               |       |      |        |        |        |        |          |        |             |         |

- SYMBOL LEGEND**
- 2x4 SUSPENDED CEILING PANEL AND GRID ASSEMBLY.
  - GWB CEILING.
  - 2x2 LAY-IN LIGHT FIXTURE.
  - 2x4 LAY-IN LIGHT FIXTURE.
  - 1x4 LIGHT FIXTURE.
  - FLOURESCENT STRIP SIXTURE.
  - DOWN LIGHT.
  - CEILING MOUNTED EXIST LIGHT.
  - RETURN AIR GRILLE.
  - SUPPLY AIR GRILLE.
  - EXHAUST AIR GRILLE.
  - SPRINKLER HEAD.
  - CEILING MOUNTED SPEAKER.
  - CEILING MOUNTED SMOKE DETECTOR.

- FINISH ABBREVIATIONS**
- |       |                         |
|-------|-------------------------|
| ACT   | ACOUSTICAL CEILING TILE |
| CPT   | CARPET                  |
| CT    | CERAMIC TILE            |
| GWB   | GYPSSUM WALLBOARD       |
| PTD   | PAINTED                 |
| Q.T.  | QUARRY TILE             |
| CPT-1 | MILLIKEN "SQUIGGLES"    |
| CPT-2 | MILLIKEN "WINDOWPANE"   |

- KEY NOTES:**
- ① INSTALL NEW FLOOR FINISH AND BASE.
  - ② REPAIR/PATCH ALL WALL SURFACES AND PAINT.
  - ③ INSTALL NEW CEILING GRID AND TILES AS INDICATED. REPLACE ANY CRACKED OR DAMAGED TILES AS NECESSARY.



|      |                                 |         |
|------|---------------------------------|---------|
| 0    | ISSUED FOR CONSTRUCTION-PHASE 1 | 5-21-03 |
| REV. | DESCRIPTION                     | DATE    |

**ISSUED FOR CONSTRUCTION**  
**PHASE 1 5-21-03**  
 CURRENT ISSUE STATUS:

**SMRT** ARCHITECTURE ENGINEERING PLANNING  
 SMRT  
 144 Fore Street/P.O. Box 618  
 Portland, Maine 04104  
 tel. (207) 772-3846  
 fax. (207) 772-1070

**UNIMPROVIDENT**  
**H01 OPEN OFFICE RENOVATIONS**  
 PORTLAND, ME.

**PHASE 1-FLOOR PLAN,**  
**REFLECTED CEILING PLAN & DETAILS**

|                            |                      |
|----------------------------|----------------------|
| SCALE: 1/8"=1'-0"          | DATE: 5-21-03        |
| PROJECT MANAGER: JLH       | GRAPHIC SCALE: 0" 1" |
| JOB CAP/DRAWN: RJL         |                      |
| A/E OF RECORD: JLH         | SHEET No.            |
| SMRT CAD FILE: AE101-03051 | <b>AE101</b>         |
| PROJECT No. 03051          |                      |