

ROOM FINISH SCHEDULE											
ROOM NUMBER	ROOM NAME	FLOOR	BASE	WALLS				CEILING		ROOM NUMBER	REMARKS
				NORTH	SOUTH	EAST	WEST	MATERIAL	HEIGHT		
114	OPEN OFFICE	CPT-1	RB	GWB/PT	GWB/PT	GWB/PT	GWB/PT	ACT	9'-0"	114	
115	TRAINING ROOM	CPT-2	RB	GWB/PT	GWB/PT	GWB/PT	GWB/PT	ACT	9'-0"	115	
116	TRAINING ROOM	CPT-2	RB	EXIST	EXIST	EXIST	EXIST	EXIST	EXIST	116	

**SYMBOL LEGEND**

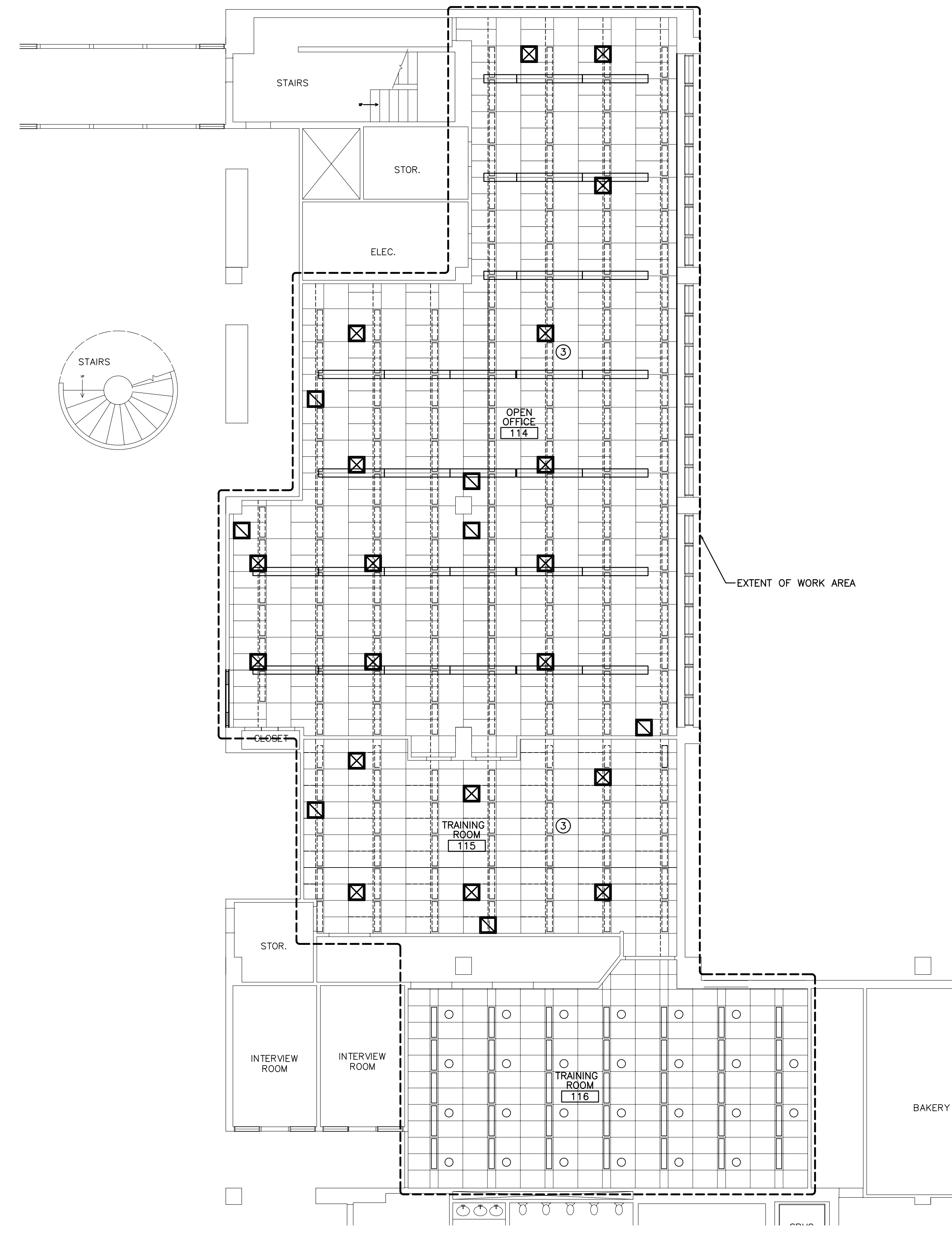
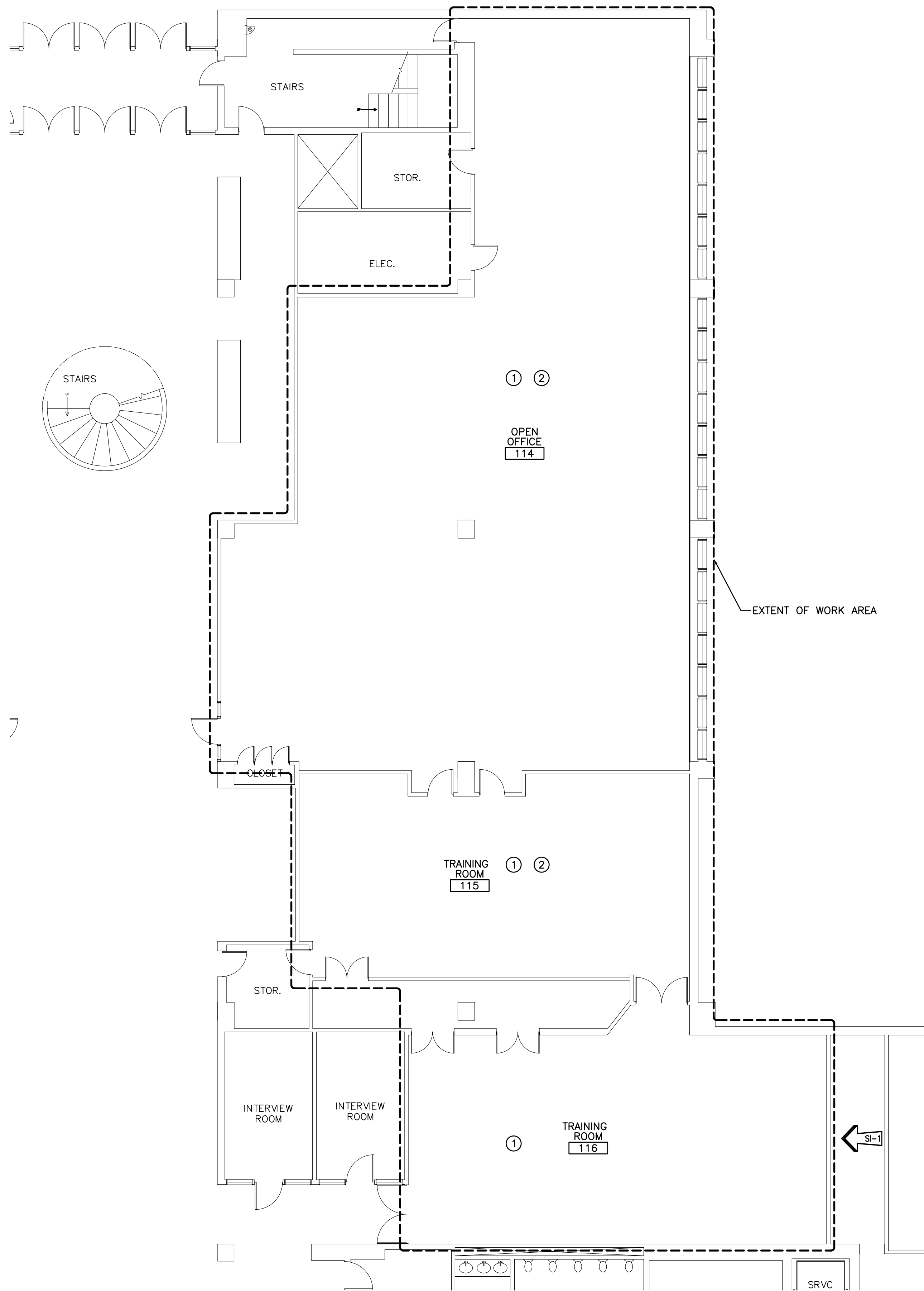
- 2x4 SUSPENDED CEILING PANEL AND GRID ASSEMBLY.
- GWB CEILING.
- 2x2 LAY-IN LIGHT FIXTURE.
- 2x4 LAY-IN LIGHT FIXTURE.
- 1x4 LIGHT FIXTURE.
- FLOURESCENT STRIP SIXTURE.
- DOWN LIGHT.
- CEILING MOUNTED EXIST LIGHT.
- RETURN AIR GRILLE.
- SUPPLY AIR GRILLE.
- EXHAUST AIR GRILLE.
- SPRINKLER HEAD.
- CEILING MOUNTED SPEAKER.
- CEILING MOUNTED SMOKE DETECTOR.

**FINISH ABBREVIATIONS**

- ACT ACOUSTICAL CEILING TILE
- CPT CARPET
- CT CERAMIC TILE
- GWB GYPSUM WALLBOARD
- PTD PAINTED
- Q.T. QUARRY TILE
- CPT-1 MILLIKEN "SQUIGGLES"
- CPT-2 MILLIKEN "WINDOWPANE"

**KEY NOTES:**

- ① INSTALL NEW FLOOR FINISH AND BASE.
- ② REPAIR/PATCH ALL WALL SURFACES AND PAINT.
- ③ INSTALL NEW CEILING GRID AND TILES AS INDICATED. REPLACE ANY CRACKED OR DAMAGED TILES AS NECESSARY.



1	ISSUED FOR SI-1	6-02-03
0	ISSUED FOR CONSTRUCTION-PHASE 1	5-21-03
REV.	DESCRIPTION	DATE

**ISSUED FOR SI-1  
6-02-03**

CURRENT ISSUE STATUS:		

**SMRT** ARCHITECTURE ENGINEERING PLANNING  
 SMRT  
 144 Fore Street/P.O. Box 618  
 Portland, Maine 04104  
 tel. (207) 772-3846  
 fax. (207) 772-1070

**UNIMPROVIDENT  
H01 OPEN OFFICE RENOVATIONS**  
 PORTLAND, ME.

**PHASE 1-FLOOR PLAN,  
REFLECTED CEILING PLAN & DETAILS**

SHEET TITLE:	SCALE: 1/8"=1'-0"	DATE: 5-21-03
PROJECT MANAGER: JLH	GRAPHIC SCALE: 0" 1"	
JOB CAP/DRAWN: RJL		
A/E OF RECORD: JLH	SHEET No.	
SMRT CAD FILE: AE101-03051		
PROJECT No. 03051		<b>AE101</b>

A1 FLOOR PLAN

A9 REFLECTED CEILING PLAN

1/8"=1'-0"

1/8"=1'-0"