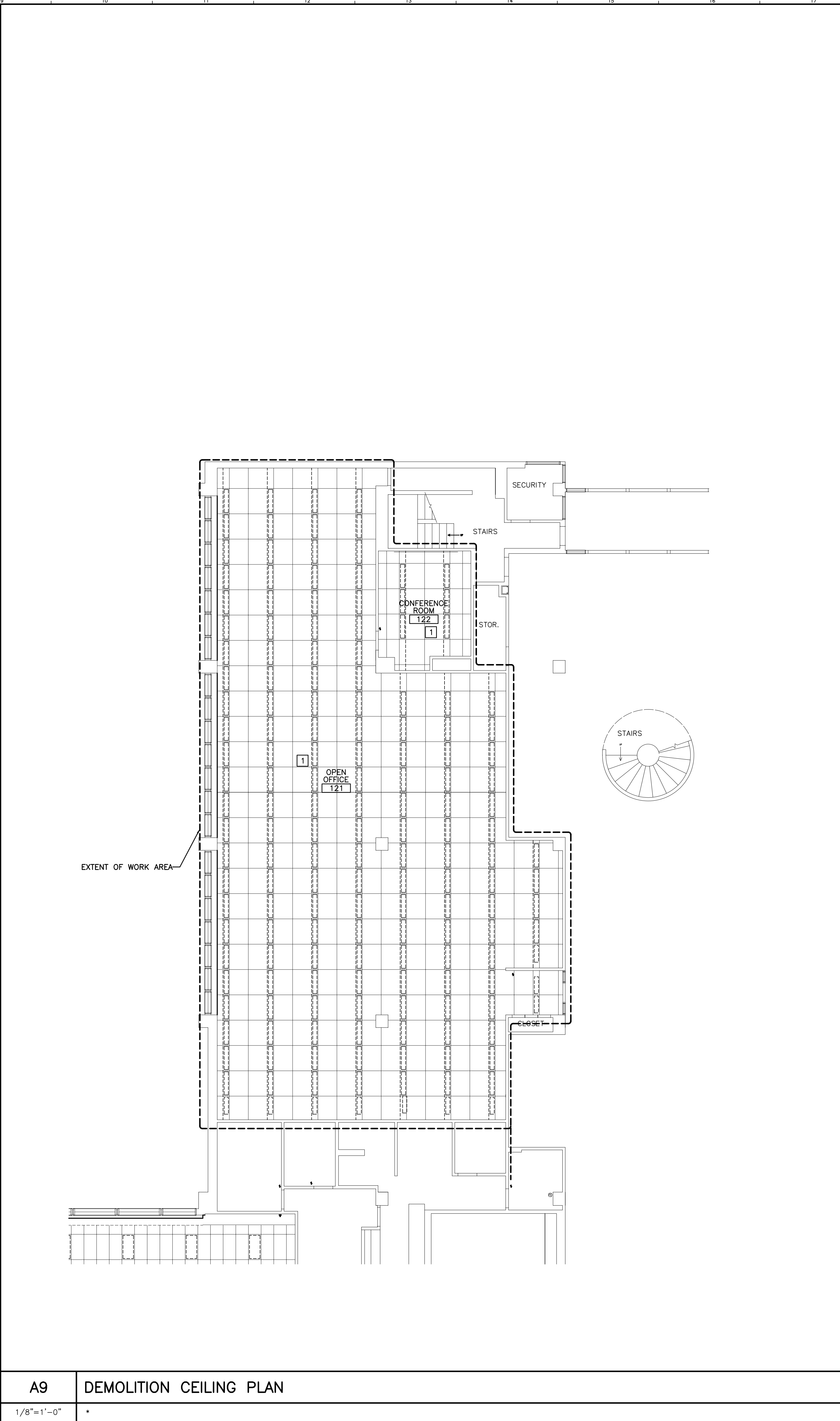


A1 DEMOLITION FLOOR PLAN

1/8"=1'-0"



A9 DEMOLITION CEILING PLAN

1/8"=1'-0"

DEMOLITION KEY NOTES:

- 1 REMOVE CEILING TILE AND GRID ASSEMBLY AS INDICATED. COORDINATE EXTENTS OF REMOVAL WITH PARTITION LOCATIONS AND EXISTING CEILING TO REMAIN.
- 2 REMOVE ALL CARPET TILE AND BASE IN WORK AREA AND PREP FOR NEW FLOOR FINISHES.

GENERAL DEMOLITION NOTES:

- 1. COORDINATE EXTENT OF DEMOLITION WITH LOCATIONS OF PARTITIONS DESCRIBED ON PLANS AND WITH LOCATIONS OF FINISHES NOTED AS EXISTING TO REMAIN.
- 2. ANY WALL, PARTITION OR SURFACE DISTURBED BECAUSE OF NEW WORK OR DEMOLITION SHALL BE PATCHED AND FINISHED CONTINUOUSLY TO THE NEAREST CORNER UNLESS NOTED OTHERWISE. MATCH EXISTING ADJACENT CONSTRUCTION FINISHES, CONTINUITY AND FIRE RATINGS UNLESS NOTED OTHERWISE.
- 3. PROTECT ALL FINISHES, MATERIALS AND EQUIPMENT NOTED AS EXISTING TO REMAIN. CONTRACTOR SHALL BE RESPONSIBLE TO REPLACE ALL FINISHES, MATERIALS AND EQUIPMENT DAMAGED DURING CONSTRUCTION.
- 4. FOR EXTENTS OF CEILING GRID REMOVALS AND ADJUSTMENTS REFER TO SHEET AE????
- 5. DIMENSIONS INDICATED ± ARE EXISTING CONDITION DIMENSIONS TO BE VERIFIED IN FIELD.

CEILING DEMOLITION LEGEND

- SUSPENDED CEILING PANEL AND GRID ASSEMBLY TO BE REMOVED.
- SUSPENDED CEILING PANEL AND GRID ASSEMBLY TO REMAIN.
- 1x4 LIGHT FIXTURE TO BE REMOVED.

| | | |
|------|--------------------------------|--------|
| 0 | ISSUED FOR CONSTRUCTION-PHASE2 | 6-2-03 |
| REV. | DESCRIPTION | DATE |

**ISSUED FOR CONSTRUCTION
PHASE 2 6-2-03**
CURRENT ISSUE STATUS:

| | | |
|--|--|--|
| | | |
|--|--|--|

SM RT ARCHITECTURE ENGINEERING PLANNING
SMRT
144 Fore Street/P.O. Box 618
Portland, Maine 04104
tel. (207) 773-3846
fax. (207) 772-1070

**UNIMPROVIDENT
H01 OPEN OFFICE RENOVATIONS**
PROJECT: PORTLAND, ME.

**PHASE 2-
DEMOLITION PLAN**

| | | | |
|------------------|-------------|----------------|--------|
| SHEET TITLE: | 1/8"=1'-0" | DATE: | 6-2-03 |
| PROJECT MANAGER: | JLH | GRAPHIC SCALE: | 0" 1" |
| JOB CAP/DRAWN: | RJL | | |
| A/E OF RECORD: | JLH | SHEET No. | |
| SMRT CAD FILE: | AD102-03051 | | |
| PROJECT No. | 03051 | | |

AD102