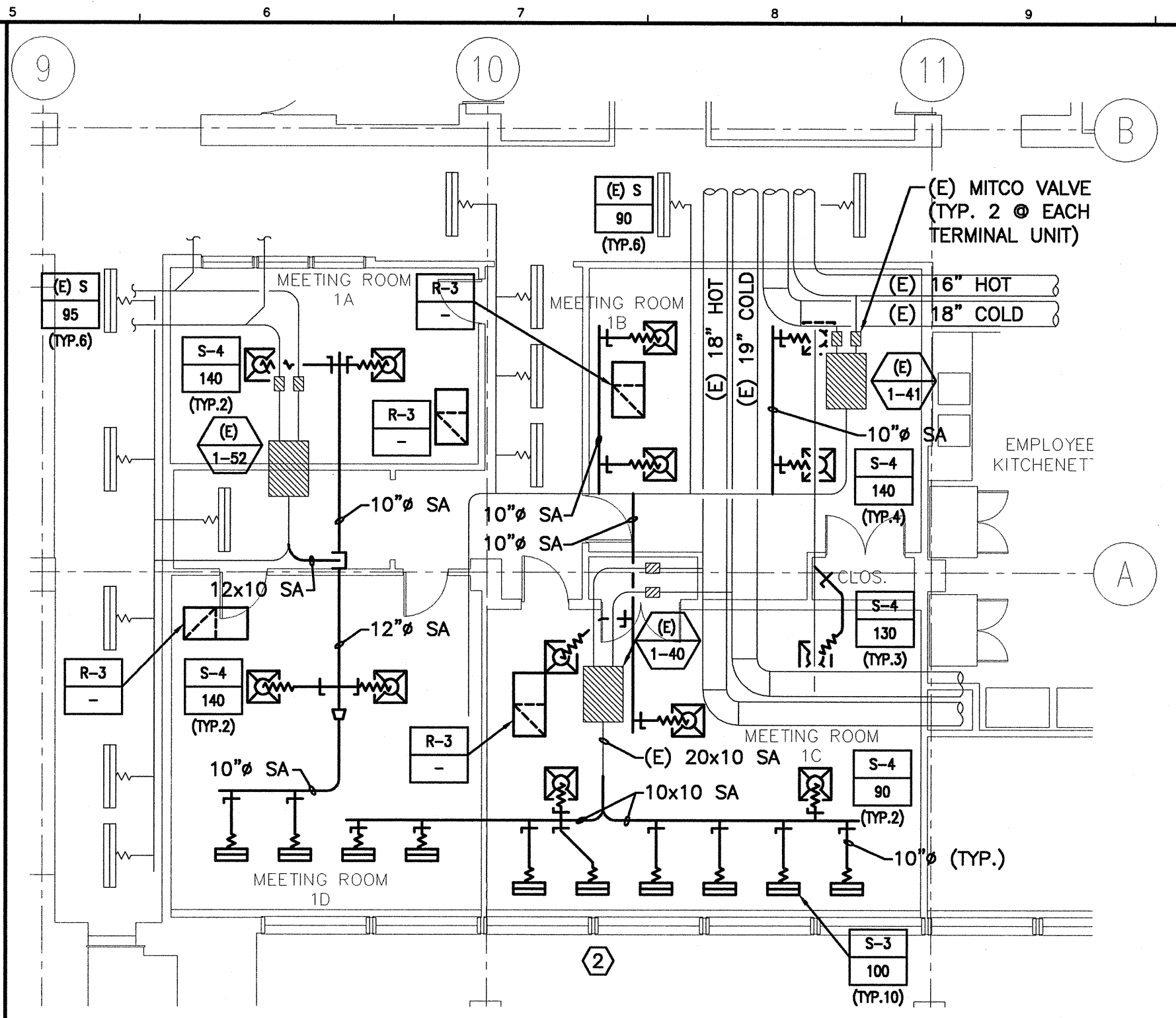


J1 I-ROOMS DEMOLITION PLAN (ALTERNATE BID)

1/8"=1'-0"

M-101



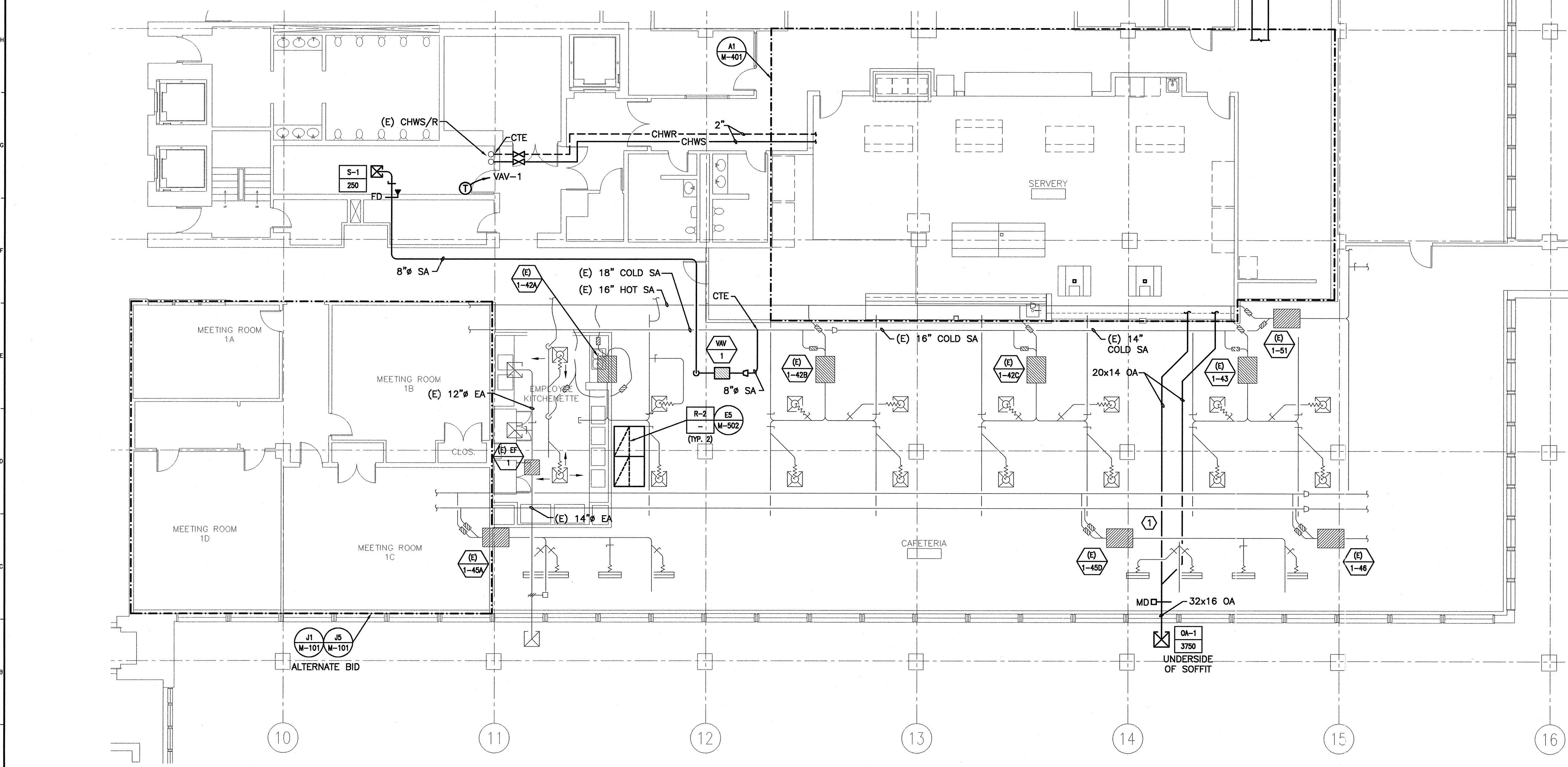
J5 I-ROOMS HVAC PLAN BID (ALTERNATE BID)

1/8"=1'-0"

M-101

NOTE:
1. SEE SHEET M-001 FOR LEGEND AND ABBREVIATIONS.

KEYED NOTES:
① MODIFY BRANCH DUCTWORK AS NECESSARY TO ACCOMMODATE NEW DUCTWORK.
② SEAL ALL OPENINGS CREATED BY REMOVED DUCTWORK AND DIFFUSERS. INSPECT ALL REMAINING DUCTWORK ASSOCIATED WITH TERMINAL UNITS 1-40, 41, 52 FOR AIR LEAKAGE AND SEAL AIRTIGHT ACCORDINGLY. INSPECT, CLEAN, ADJUST AND VERIFY PROPER OPERATION OF MITCO VALVES ASSOCIATED WITH 1-40, 41, 52. REPLACE OR REPAIR INSULATION ON EXISTING DUCTWORK WHERE DAMAGED OR MISSING.

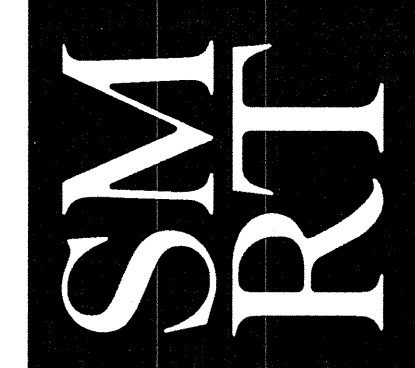
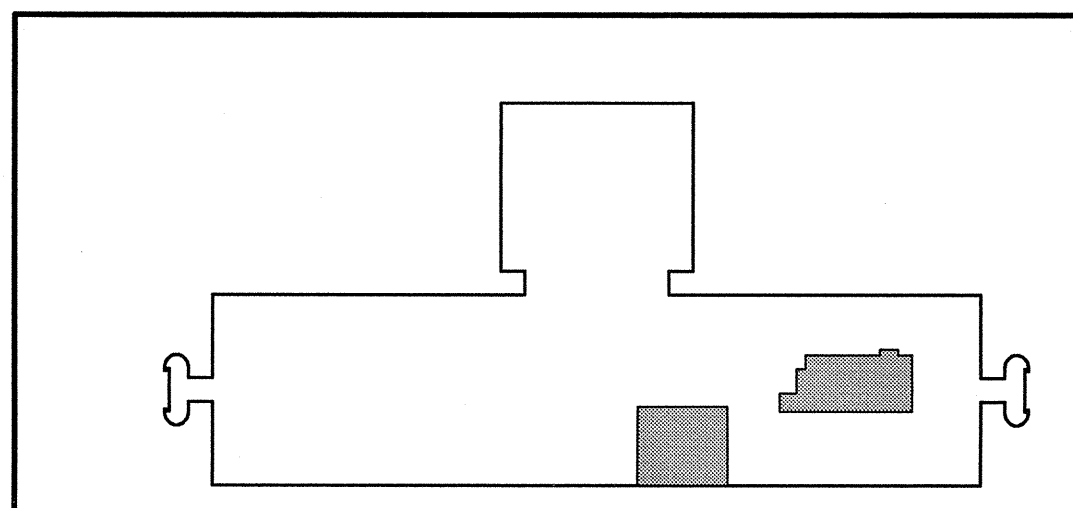


A1 FLOOR PLAN

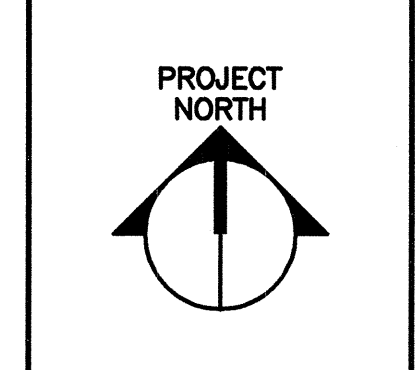
1/8"=1'-0"

A14 KEYPLAN

NOT TO SCALE



ARCHITECTURE ENGINEERING PLANNING
SMRT
144 Fore Street P.O. Box 618
Portland, Maine 04104
tel. (207) 772-3846
fax. (207) 772-1070



PROJECT TITLE: UNIMPROVED CORPORATION HO-1 BEACON PHASE II
CURRENT ISSUE STATUS: ISSUED FOR CONSTRUCTION 8-16-2004
PORTLAND, MAINE

REV	DESCRIPTION	DATE
0	ISSUED FOR CONSTRUCTION	8-16-04

GRAPHIC SCALE: 0" = 1"
SCALE: AS NOTED
PROJECT MANAGER: JLH
JC/DRAWN BY: CEB/BGG
A/E OF RECORD: LPA
CAD FILE: M-101-0405-4
PROJECT NO: 04054-00
DATE: 8-16-04
SHEET TITLE: FIRST FLOOR HVAC PLAN

SHEET No. **M-101**