



NOTE:

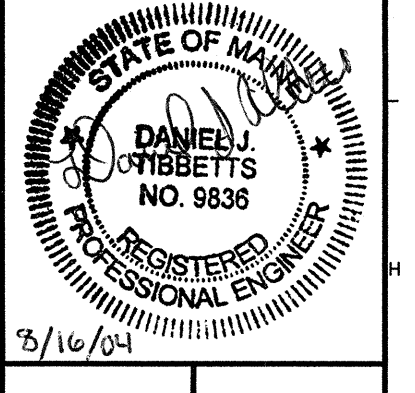
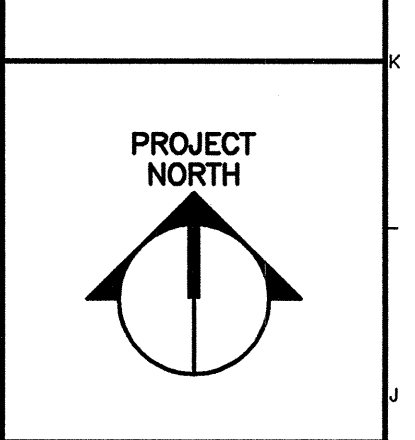
- SEE SHEET E-001 FOR LEGEND AND GENERAL NOTES.
- WIRING TO BE EXTENDED TO NEW PANELBOARDS SHALL BE AS FOLLOWS:
 15 AMP BREAKERS #12 AWG PHASE CONDUCTORS & #12 GND
 20 AMP BREAKERS #12 AWG PHASE CONDUCTORS & #12 GND
 30 AMP BREAKERS #10 AWG PHASE CONDUCTORS & #12 GND
 150 AMP BREAKER #1/0 AWG PHASE CONDUCTORS & #6 GND
 NEUTRALS TO BE EXTENDED FOR EACH RELOCATED BRANCH CIRCUIT AS REQUIRED AND SHALL BE THE SAME SIZE AS PHASE CONDUCTORS. FIELD VERIFY EACH BRANCH CIRCUIT WHEN RELOCATED AND UPDATE PANEL SCHEDULES FOR KP1, KP2, KP3 AND KP4 TO INDICATE WHAT EQUIPMENT EACH BREAKER FEEDS.

KEYED NOTE:

- REMOVE EXISTING SHUNT TRIP SWITCH AND ALL ASSOCIATED WIRING BACK TO SOURCE.
- REMOVE EXISTING PANELBOARD HKP1-1 AND EXTEND WIRING FROM EXISTING PANELBOARD FOR GARBAGE DISPOSAL (20 A, 3 POLE BREAKER) AND CONVECTION OVEN (30A, 3 POLE BREAKER) TO PANELBOARD KPH SHOWN ON DRAWING EP102. SEE NOTE 2.
- REMOVE EXISTING PANELBOARD HKP1-2 AND EXTEND WIRING FROM EXISTING PANELBOARD FOR TRANSFORMER FEED (150 A, 3 POLE BREAKER) TO PANELBOARD KPH SHOWN ON DRAWING EP102. SEE NOTE 2.
- REMOVE EXISTING PANELBOARD LKP3 AND ALL ASSOCIATED WIRING. EXTEND WIRING FOR BRANCH CIRCUITS FED FROM THREE 30A, 2 POLE BREAKERS, TWO 20A, TWO POLE BREAKERS AND SIXTEEN 20A, SINGLE POLE BREAKERS TO PANELBOARDS KP1, KP3 AND KP4 SHOWN ON EP102. SEE NOTE 2.
- REMOVE EXISTING PANELBOARD LKP2 AND ALL ASSOCIATED WIRING. EXTEND WIRING FOR BRANCH CIRCUITS FED FROM ONE 30A, 2 POLE BREAKER, ONE 20A, TWO POLE BREAKER, ONE 15A, TWO POLE BREAKER, ONE 30A, SINGLE POLE, TWO 20A, THREE POLE BREAKERS, ONE 15A, THREE POLE BREAKER AND TWELVE 20A, SINGLE POLE BREAKERS TO PANELBOARDS KP1, KP2, KP3 AND KP4 SHOWN ON EP102. SEE NOTE 2.
- REMOVE EXISTING PANELBOARD LKP1 AND ALL ASSOCIATED WIRING. EXTEND WIRING FOR BRANCH CIRCUITS FED FROM ONE 30A, 2 POLE BREAKER, FOUR 20A, TWO POLE BREAKERS, ONE 15A, TWO POLE BREAKER, TWO 15A, THREE POLE BREAKERS AND SEVENTEEN 20A, SINGLE POLE BREAKERS TO PANELBOARDS KP1, KP2, KP3 AND KP4 SHOWN ON EP102. SEE NOTE 2.

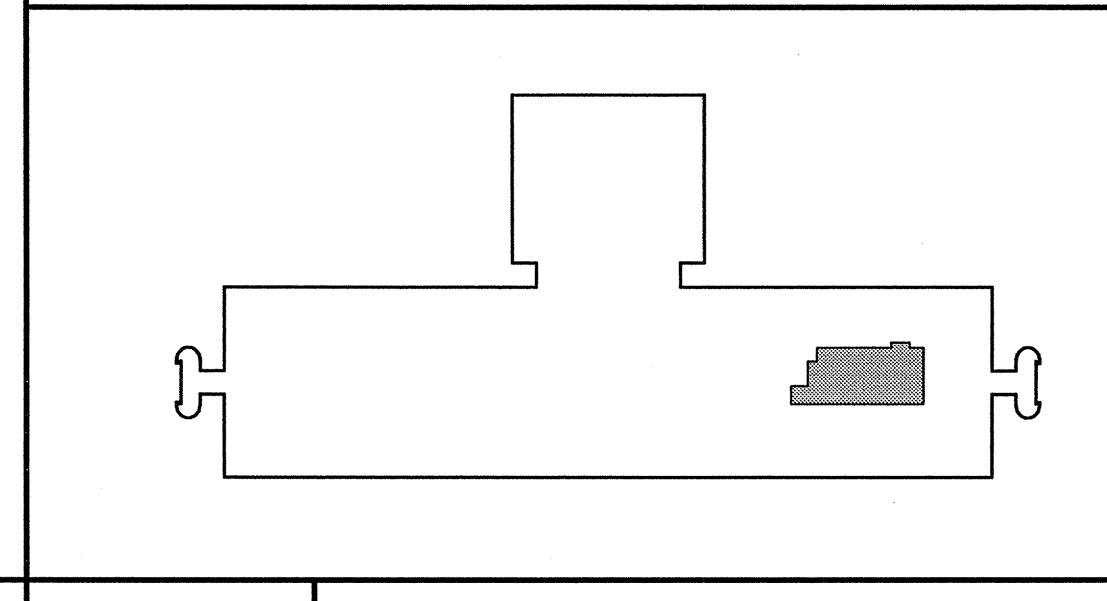
SM RT

ARCHITECTURE ENGINEERING PLANNING
 SWRT
 144 Fore Street/P.O. Box 618
 Portland, Maine 04104
 tel. (207) 772-3846
 fax. (207) 772-1070



PROJECT TITLE: UNIMPROVIDENT CORPORATION HO-1 BEACON PHASE II
 PORTLAND, MAINE
 CURRENT ISSUE STATUS: ISSUED FOR CONSTRUCTION
 8-16-2004

REV	DESCRIPTION	DATE
0	ISSUED FOR CONSTRUCTION	8-16-04



A1 DEMOLITION PLAN
 1/4"=1'-0"

A14 KEYPLAN
 NOT TO SCALE

SHEET No. ED101