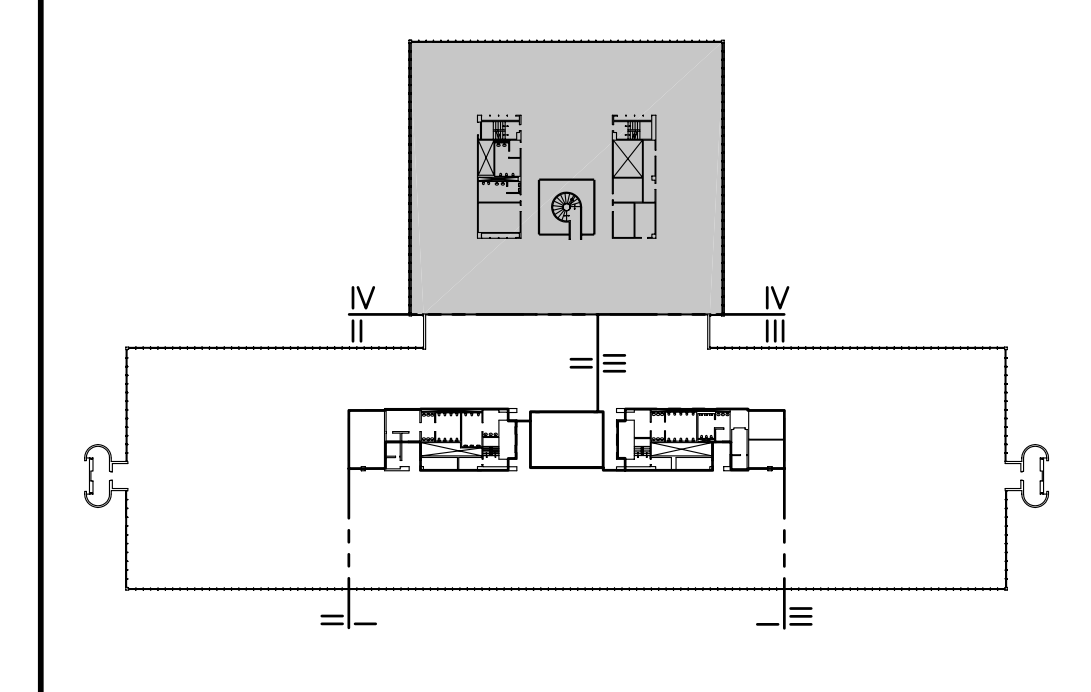


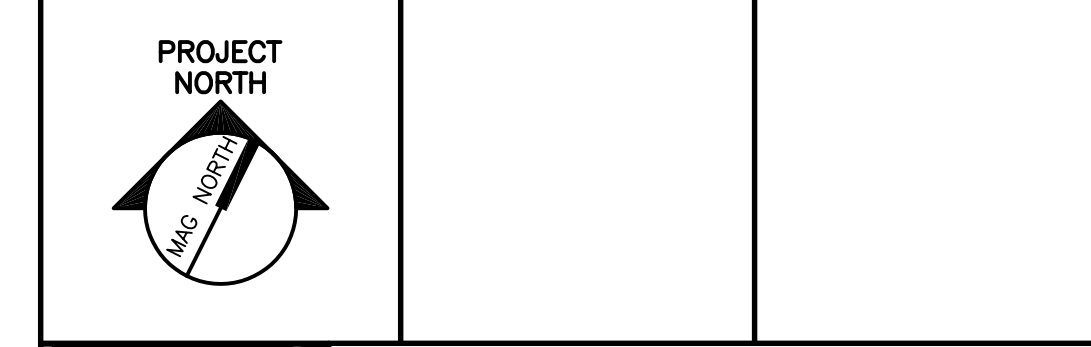
**NOTES:**  
 1. SEE SHEET M-001 FOR LEGEND AND ABBREVIATIONS.  
 2. ALL EXISTING DUCT HANGERS SHALL REMAIN FOR FUTURE USE.

**KEYED NOTES:**  
 ① MITCO VALVE. REMOVE AND STORE AT UNUMPROVIDENT'S DIRECTION.  
 ② EXISTING HOT DECK IS INACTIVE.



<b>F18</b>	<b>KEY PLAN</b>	
NOT TO SCALE		
0	ISSUED FOR CONSTRUCTION	1-28-04
REV.	DESCRIPTION	DATE

**ISSUED FOR CONSTRUCTION**  
**1-28-04**  
 CURRENT ISSUE STATUS:



**SMRT** ARCHITECTURE ENGINEERING PLANNING  
 144 Fore Street, P.O. Box 618  
 Portland, Maine 04104  
 tel. (207) 772-3846  
 fax. (207) 772-1070

**UNUMPROVIDENT HO-1**  
**2nd FLOOR OFFICE RENOVATIONS**  
 PORTLAND, ME.

**PHASE IV**  
**DEMOLITION PLAN**

SHEET TITLE:	1/8"=1'-0"	DATE:	1-28-04
PROJECT MANAGER:	JLH	GRAPHIC SCALE:	0" 1"
JOB CAP/DRAWN:	CEB/CAH	A/E OF RECORD:	LPA
SMRT CAD FILE:	MD104-03100-01	SHEET No.	MD104
PROJECT No.	03100-01		

**A1** FLOOR PLAN  
 1/8"=1'-0"