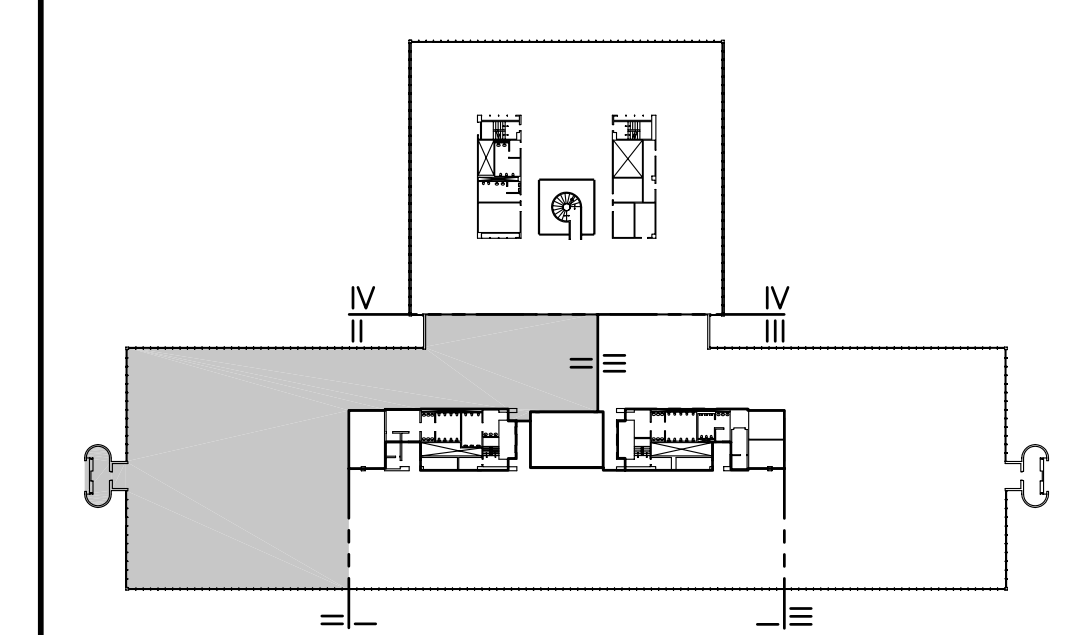
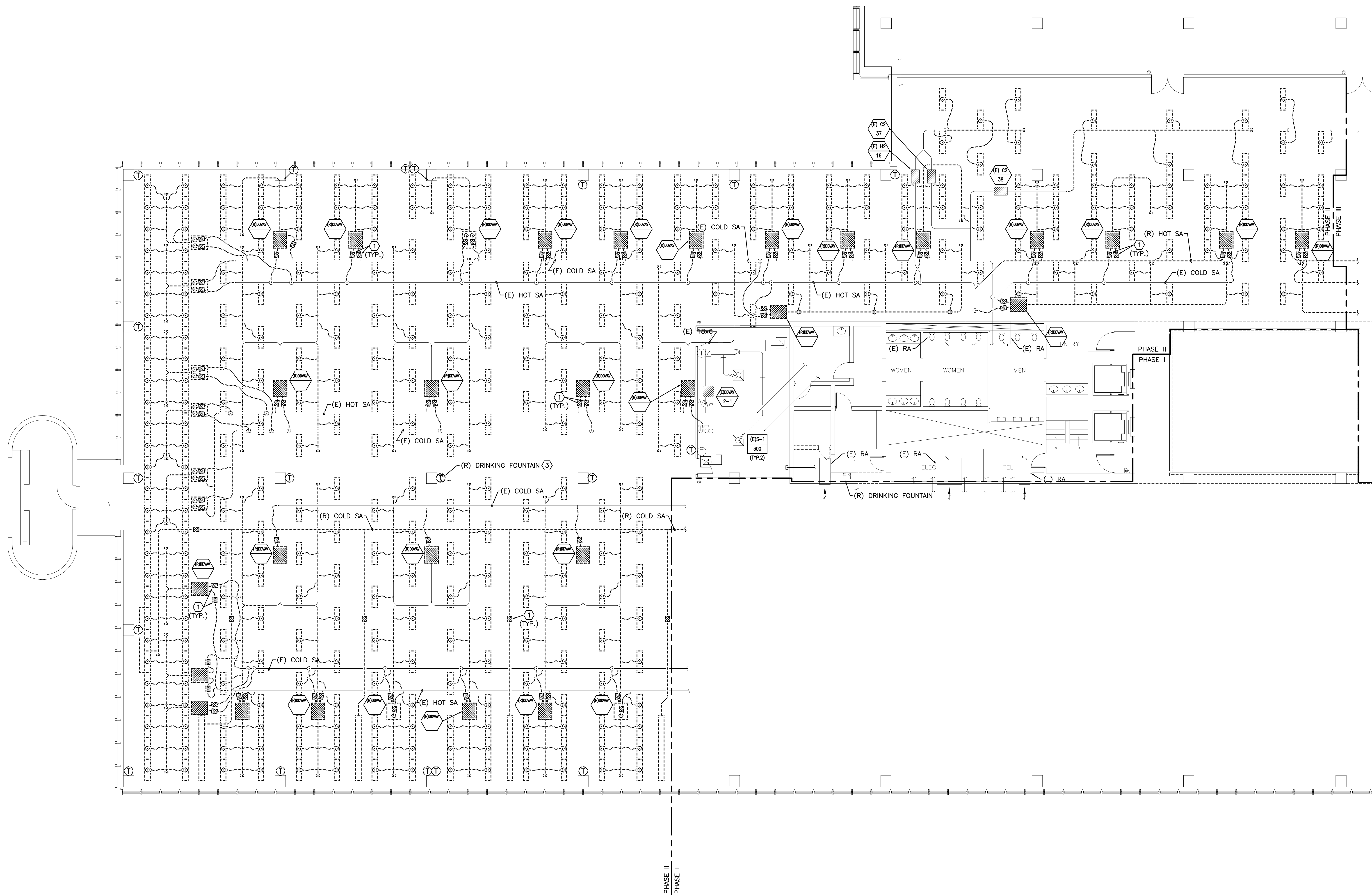


**NOTES:**

- SEE SHEET M-001 FOR LEGEND AND ABBREVIATIONS.
- ALL EXISTING DUCT HANGERS SHALL REMAIN FOR FUTURE USE.

**KEYED NOTES:**

- MITCO VALVE. REMOVE AND STORE AT UNUMPROVIDENT'S DIRECTION.
- EXISTING HOT DECK IS INACTIVE.
- REMOVE DOMESTIC CW SUPPLY & SANITARY BRANCHES SERVING DRINKING FOUNTAIN TO WITHIN 12" OF MAINS. CAP AND SEAL PIPING.



**F18 KEY PLAN**

NOT TO SCALE	
0	ISSUED FOR CONSTRUCTION
REV.	DESCRIPTION
	DATE

**ISSUED FOR CONSTRUCTION**  
1-28-04

CURRENT ISSUE STATUS:



**SM RT** ARCHITECTURE ENGINEERING PLANNING  
SMRT  
144 Fore Street, P.O. Box 618  
Portland, Maine 04104  
tel. (207) 772-3846  
fax. (207) 772-1070

**UNUMPROVIDENT HO-1**  
2nd FLOOR OFFICE RENOVATIONS  
PORTLAND, ME.

**PHASE II DEMOLITION PLAN**

SHEET TITLE:	1/8"=1'-0"	DATE:	1-28-04
PROJECT MANAGER:	JLH	GRAPHIC SCALE:	0" 1"
JOB CAP/DRAWN:	CEB/CAH		
A/E OF RECORD:	LPA	SHEET No.	
SMRT CAD FILE:	MD102-03100-0		
PROJECT No.	03100-01		

**MD102**

**A1 FLOOR PLAN**

1/8"=1'-0"