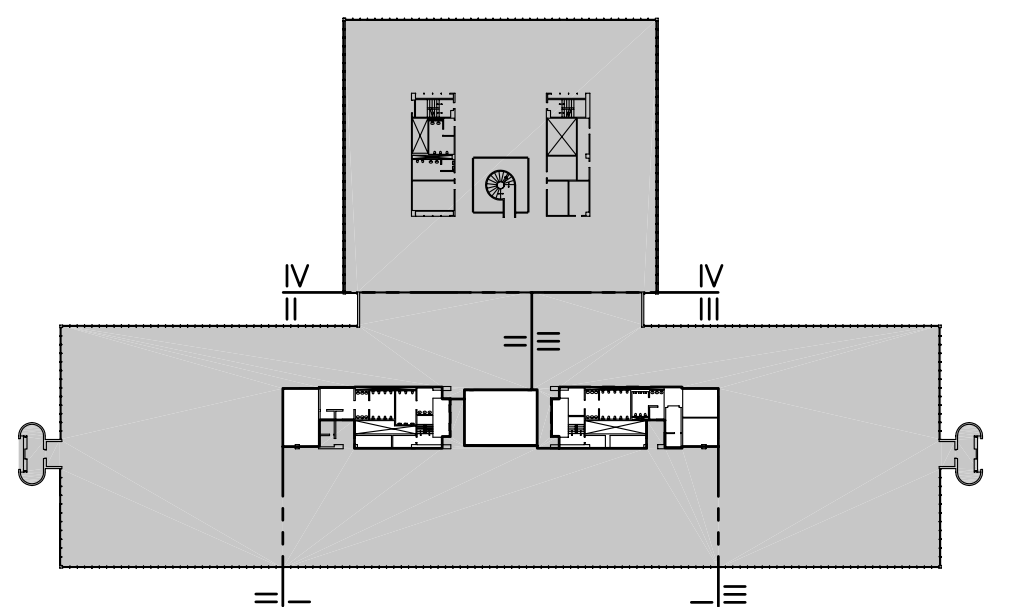


UnumProvident HO-1

2nd FLOOR OPEN OFFICE RENOVATIONS PORTLAND, MAINE

ISSUED FOR CONSTRUCTION
1-28-04

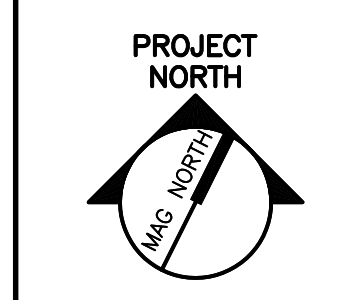


F18 KEY PLAN

| | | |
|--------------|-------------------------|---------|
| NOT TO SCALE | | |
| 0 | ISSUED FOR CONSTRUCTION | 1-28-04 |
| REV. | DESCRIPTION | DATE |

ISSUED FOR CONSTRUCTION
1-28-04

CURRENT ISSUE STATUS:



ARCHITECTURE ENGINEERING PLANNING

SMRT
144 Fore Street, P.O. Box 618
Portland, Maine 04104
tel. (207) 772-3846
fax. (207) 772-1070

UNUMPROVIDENT HO-1
2nd FLOOR OFFICE RENOVATIONS
PORTLAND, ME.

PROJECT: TITLE SHEET

| | |
|-------------------------------|----------------------|
| SHEET TITLE: | |
| SCALE: NOT TO SCALE | DATE: |
| PROJECT MANAGER: JLH | GRAPHIC SCALE: 0" 1" |
| JOB CAP/DRAWN: CEB | |
| A/E OF RECORD: JLH | SHEET No. |
| SMRT CAD FILE: G1001-03100-01 | G1001 |
| PROJECT No. 03100-01 | |

GENERAL SYMBOL LEGEND

- BUILDING SECTION
- WALL SECTION
- DETAIL
- EXTERIOR ELEVATION
- INTERIOR ELEVATION
- LEVEL LINE
- CIRCLE NOTE
- WINDOW TAG
- PARTITION TAG
X= PARTIAL WALL HEIGHT
UNO
- DOOR TAG
- ROOM NAME
ROOM NUMBER
- COLUMN BUBBLE AND
CENTER LINE
- BACKER ROD & SEALANT

| GRID NO. | TITLE |
|----------|-----------------|
| SCALE | REFERENCE SHEET |

DRAWING LIST

- GENERAL**
- G1001 TITLE SHEET
- ARCHITECTURAL**
- AD101 PHASE I - REFLECTED CEILING DEMOLITION PLAN
AD102 PHASE II - REFLECTED CEILING DEMOLITION PLAN
AD103 PHASE III - REFLECTED CEILING DEMOLITION PLAN
AD104 PHASE IV - REFLECTED CEILING DEMOLITION PLAN
AD105 DEMOLITION FLOOR PLAN
- AE101 PHASE I - REFLECTED CEILING PLAN
AE102 PHASE II - REFLECTED CEILING PLAN
AE103 PHASE III - REFLECTED CEILING PLAN
AE104 PHASE IV - REFLECTED CEILING PLAN
AE105 PRIVATE OFFICE FLOOR PLAN
- AE601 ROOM FINISH AND DOOR SCHEDULES
- MECHANICAL**
- M-001 LEGEND & ABBREVIATIONS
- MD101 PHASE I - DEMOLITION PLAN
MD102 PHASE II - DEMOLITION PLAN
MD103 PHASE III - DEMOLITION PLAN
MD104 PHASE IV - DEMOLITION PLAN
- M-101 PHASE I - HVAC PLAN
M-102 PHASE II - HVAC PLAN
M-103 PHASE III - HVAC PLAN
M-104 PHASE IV - HVAC PLAN
- M-601 SCHEDULES, DETAILS & SPECIFICATIONS

ELECTRICAL

- E-001 LEGEND & GENERAL NOTES
- ED101 PHASE I ELECTRICAL DEMOLITION PLAN
ED102 PHASE II ELECTRICAL DEMOLITION PLAN
ED103 PHASE III ELECTRICAL DEMOLITION PLAN
ED104 PHASE IV ELECTRICAL DEMOLITION PLAN
- EP102 PHASE II POWER PLAN
EP103 PHASE III POWER PLAN
EP104 PHASE IV POWER PLAN
- EL101 PHASE I LIGHTING PLAN
EL102 PHASE II LIGHTING PLAN
EL103 PHASE III LIGHTING PLAN
EL104 PHASE IV LIGHTING PLAN
- EY101 PHASE I SYSTEMS PLAN
EY102 PHASE II SYSTEMS PLAN
EY103 PHASE III SYSTEMS PLAN
EY104 PHASE IV SYSTEMS PLAN

ABBREVIATIONS

- | | | |
|---------------------------------------|---|--------------------------------------|
| AC, A/C AIR CONDITIONING | GB GRAB BAR | PSI POUNDS PER SQUARE INCH |
| ACCU AIR CONDITIONING CONDENSER UNIT | GC GENERAL CONTRACTOR | PT PRESSURE-TREATED |
| ACPLAS ACOUSTICAL PLASTER | GDT GYPSUM DROP-IN TILE | PVC POLYVINYL CHLORIDE |
| ACT ACOUSTIC CEILING TILE | GV GRAVITY VENT | R RISER; RADIUS |
| AFT ABOVE FINISHED FLOOR | GWB GYPSUM WALL BOARD | RB RESILIENT BASE |
| AP ACCESS PANEL | H HORIZONTAL | RD ROOF DRAIN |
| BCE BOTTOM CHORD EXTENSION | HC HANDICAPPED; HOLLOW CORE | RO ROUGH OPENING |
| BD BOARD | HM HOLLOW METAL | RR RUB-RAIL |
| BLP BORROWED LIGHT PANEL | HRLU HEAT RECOVERY UNIT | RTU ROOFTOP UNIT (HVAC) |
| BO BOTTOM OF | HVAC HEATING AND VENTILATING AND AIR CONDITIONING | SACT SUSPENDED ACOUSTIC TILE CEILING |
| BOF BOTTOM OF FOOTING | IF INSIDE FACE | SC SOLID CORE |
| BOS BOTTOM OF STEEL | J ISOLATION JOINT | SF SQUARE FOOT; SUPPLY FAN |
| BS BOTH SIDES | IMP IMPACT RESISTANT | SK SHEAR KEY |
| BSE BRICK SHELF ELEVATION | INSUL INSULATION | SN SANITARY NAPKIN (DISPENSER) |
| C CHANNEL | INV INVERT | SP SPECIAL |
| CB CATCH BASIN; CHALKBOARD | JS JOIST SUBSTITUTE | SS STAINLESS STEEL |
| CEM BD CEMENTITIOUS BACKER BOARD | L ANGLE | T TREAD |
| CFM CUBIC FEET PER MINUTE | LINO SHEET LINOLEUM | T&B TOP AND BOTTOM |
| CIP CAST IN PLACE | LLH LONG LEG HORIZONTAL | TBM TEMPORARY BENCHMARK |
| CJ CONTROL JOINT; CONSTRUCTION JOINT | LLV LONG LEG VERTICAL | TCE TOP CHORD EXTENSION |
| CMU CONCRETE MASONRY UNIT | LP LIGHTING PANEL; LIQUEFIED PROPANE | TJ TIE JOIST |
| CT CERAMIC TILE | MB MARKER BOARD | TOC TOP OF CONCRETE |
| CUH CABINET UNIT HEATER | MDO MEDIUM DENSITY OVERLAY | TOF TOP OF FOOTING |
| CONT CONTINUOUS | MO MASONRY OPENING | TOM TOP OF MASONRY |
| DF DRINKING FOUNTAIN | MR MOISTURE-RESISTANT | TOP TOP OF PER |
| DR DISPLAY RAIL | MUA MAKE-UP AIR | TOS TOP OF STEEL; TOP OF SLAB |
| DW DISHWASHER | N NOSING | TOW TOP OF WALL |
| EF EXHAUST FAN; EACH FACE | NIC NOT IN CONTRACT | TP TOILET PAPER (DISPENSER) |
| EJ EXPANSION JOINT | NS NEAR SIDE | TS |
| EPDM ETHYLENE PROPYLENE DIENE MONOMER | NTS NOT TO SCALE | UH UNIT HEATER |
| EW EACH WAY | OC ON CENTER | UNO UNLESS NOTED OTHERWISE |
| EWC ELECTRIC WATER COOLER | OF OUTSIDE FACE | V VENT PIPE; VERTICAL |
| FB FLAT BAR | OH OVERHEAD | VB VAPOR BARRIER |
| FBO FURNISHED BY OTHERS | PA PUBLIC ADDRESS | VCVT VINYL COMPOSITION TILE |
| FCO FLOOR CLEAN-OUT | PAF POWDER-ACTUATED FASTENER | VP VISION PANEL |
| FCU FAN COIL UNIT | PDU POOL DEHUMIDIFICATION UNIT | VTR VENT THROUGH THE ROOF |
| FD FLOOR DRAIN | PL PLATE | W/ WITH |
| FE FIRE EXTINGUISHER | PLAM PLASTIC LAMINATE | WC WATER CLOSER |
| FF FINISHED FLOOR; FAR FACE | PLF POUNDS PER LINEAR FOOT | WF WIDE FLANGE |
| FO FRAMED OPENING | PP POWER PANEL | WH WATER HEATER |
| FRP FIBERGLASS REINFORCED PLASTIC | PSF POUNDS PER SQUARE FOOT | W/O WITHOUT |
| FS FAR SIDE | | WP WORKING POINT |
| | | WS WEB STIFFENER |
| | | WWF WELDED WIRE FABRIC |