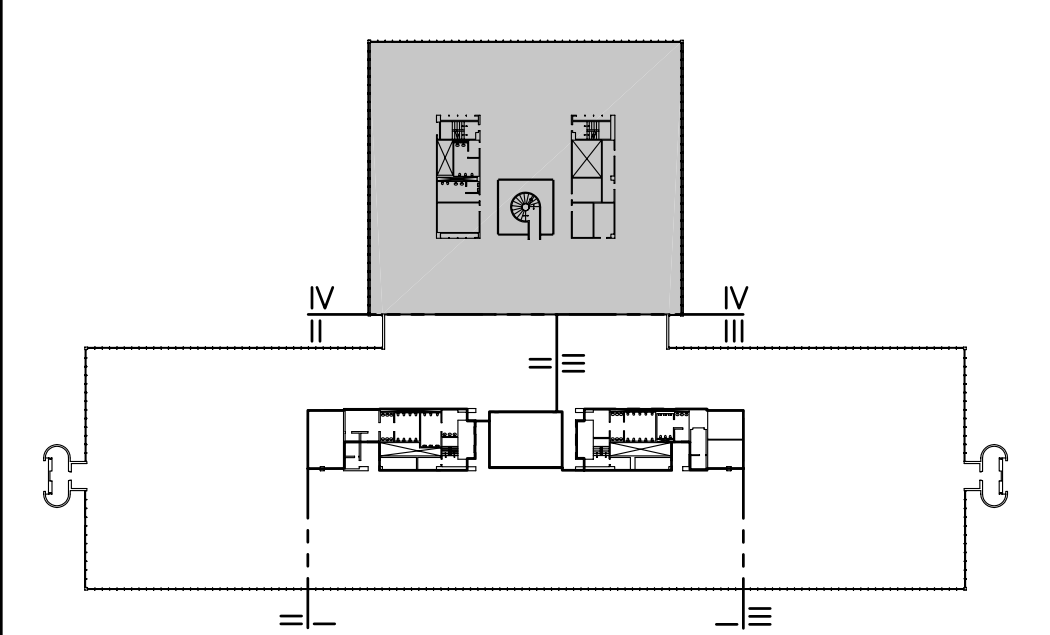


- NOTES:**
- SEE SHEET E-001 FOR LEGEND AND GENERAL NOTES.
  - LIGHTS IN OPEN OFFICE TO BE CONTROLLED (SWITCHED) BY ANDOVER CONTROL SYSTEM. EACH BRANCH CIRCUIT TO BE CONTROLLED AS A SEPARATE ZONE AND BE WIRED SO THAT EVERY THIRD 4' SECTION TO SWITCH SEPARATELY TO ALLOW FOR THREE DIFFERENT LIGHT LEVELS.
  - FEED FIVE NORTH MOST ROWS FROM HL2N-2, 4 AND 6 AND REMAINING SIX ROWS FROM HL2N-1, 3 AND 5.

- KEYED NOTE:**
- RE-USE EXISTING EMERGENCY LIGHTING BRANCH IN OPEN OFFICE AREA TO FEED NEW EMERGENCY LIGHTS AND EXIT SIGNS SHOWN. NO EMERGENCY LIGHTING BRANCH CIRCUIT SHALL FEED MORE THAN FIFTY LIGHTS. FIELD VERIFY CIRCUIT NUMBER USED AND INDICATE ON RECORD DRAWINGS.
  - REMOVE EXISTING PANELBOARD AND REPLACE WITH NEW SQUARE D PANELBOARD. PROVIDE 42 20 AMP, SINGLE POLE BREAKERS. RECONNECT FEEDER AND ANY REMAINING EQUIPMENT OR BRANCH CIRCUITS TO NEW PANELBOARD.



<b>F18</b>		<b>KEY PLAN</b>	
NOT TO SCALE			
0	ISSUED FOR CONSTRUCTION	1-28-04	
REV.	DESCRIPTION	DATE	

**ISSUED FOR CONSTRUCTION**  
1-28-04

CURRENT ISSUE STATUS:

**PROJECT NORTH**

**SMRT** ARCHITECTURE ENGINEERING PLANNING  
SMRT  
144 Fore Street/P.O. Box 618  
Portland, Maine 04104  
tel. (207) 772-3846  
fax. (207) 772-1070

**UNIMPROVIDENT HO-1**  
**2nd FLOOR OFFICE RENOVATIONS**  
PORTLAND, ME.

<b>PHASE IV LIGHTING PLAN</b>	
SHEET TITLE:	1-28-04
SCALE: 1/8"=1'-0"	DATE: 1-28-04
PROJECT MANAGER: JLH	GRAPHIC SCALE: 0" 1"
JOB CAP/DRAWN: CEB/BGG	
A/E OF RECORD: DJT	SHEET No.
SMRT CAD FILE: EL104-03100-01	<b>EL104</b>
PROJECT No. 03100-01	