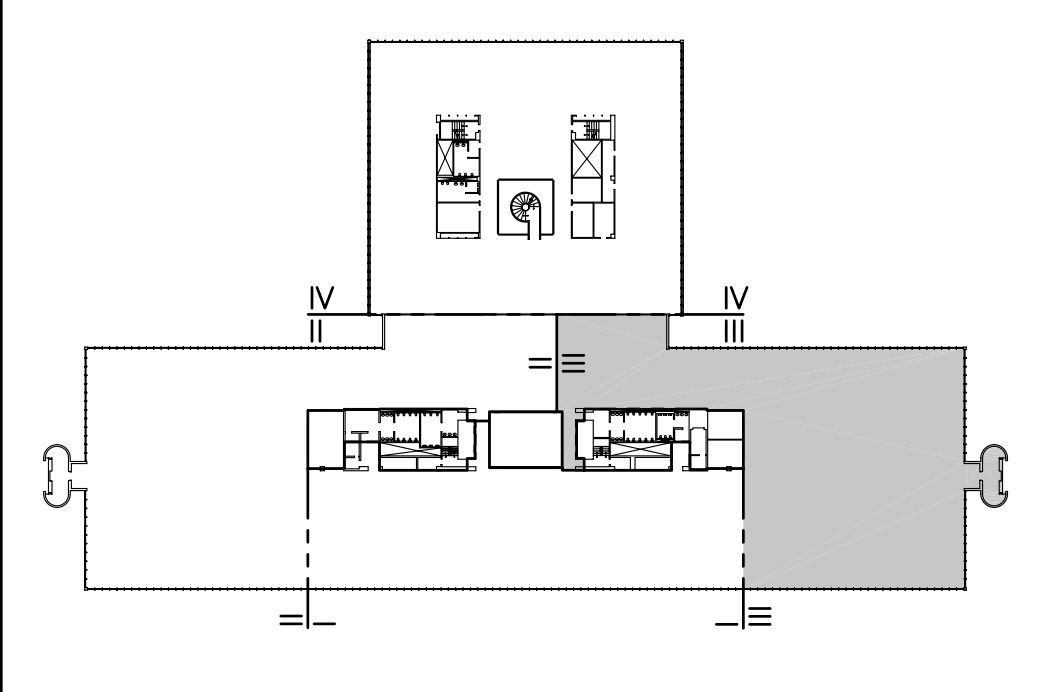


NOTES:

- SEE SHEET E-001 FOR LEGEND AND GENERAL NOTES.
- LIGHTS TO BE CONTROLLED (SWITCHED) BY ANDOVER CONTROL SYSTEM. EACH BRANCH CIRCUIT TO BE CONTROLLED AS A SEPARATE ZONE AND BE WIRED SO THAT EVERY THIRD 4' SECTION TO SWITCH SEPARATELY TO ALLOW FOR THREE DIFFERENT LIGHT LEVELS.

KEYED NOTE:

- RE-USE EXISTING EMERGENCY LIGHTING BRANCH IN OPEN OFFICE AREA TO FEED NEW EMERGENCY LIGHTS AND EXIT SIGNS SHOWN. NO EMERGENCY LIGHTING BRANCH CIRCUIT SHALL FEED MORE THAN FIFTY LIGHTS. FIELD VERIFY CIRCUIT NUMBER USED AND INDICATE ON RECORD DRAWINGS.
- USE 20 AMP. SINGLE POLE SPARE CIRCUIT BREAKERS IN EXISTING SQUARE D PANELBOARD TO FEED NEW LIGHTING AS INDICATED.

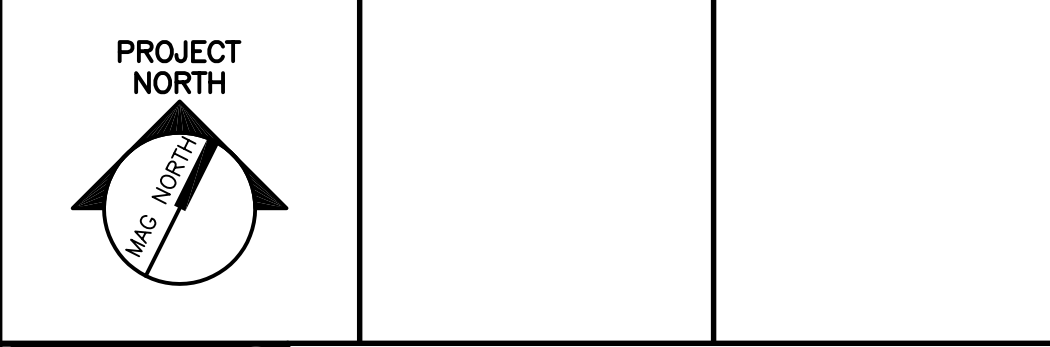


F18 KEY PLAN

NOT TO SCALE	
0	ISSUED FOR CONSTRUCTION
REV.	DESCRIPTION
	DATE

ISSUED FOR CONSTRUCTION
1-28-04

CURRENT ISSUE STATUS:



SMRT ARCHITECTURE ENGINEERING PLANNING
SMRT
144 Fore Street, P.O. Box 618
Portland, Maine 04104
tel. (207) 772-3846
fax. (207) 772-1070

UNIMPROVIDENT HO-1
2nd FLOOR OFFICE RENOVATIONS
PORTLAND, ME.

PHASE III LIGHTING PLAN

SHEET TITLE:	1/8"=1'-0"	DATE:	1-28-04
PROJECT MANAGER:	JLH	GRAPHIC SCALE:	0" 1"
JOB CAP/DRAWN:	CEB/BGG	A/E OF RECORD:	DJT
SMRT CAD FILE:	EL103-03100-01	SHEET No.	EL103
PROJECT No.	03100-01		

A1 FLOOR PLAN

1/8"=1'-0"