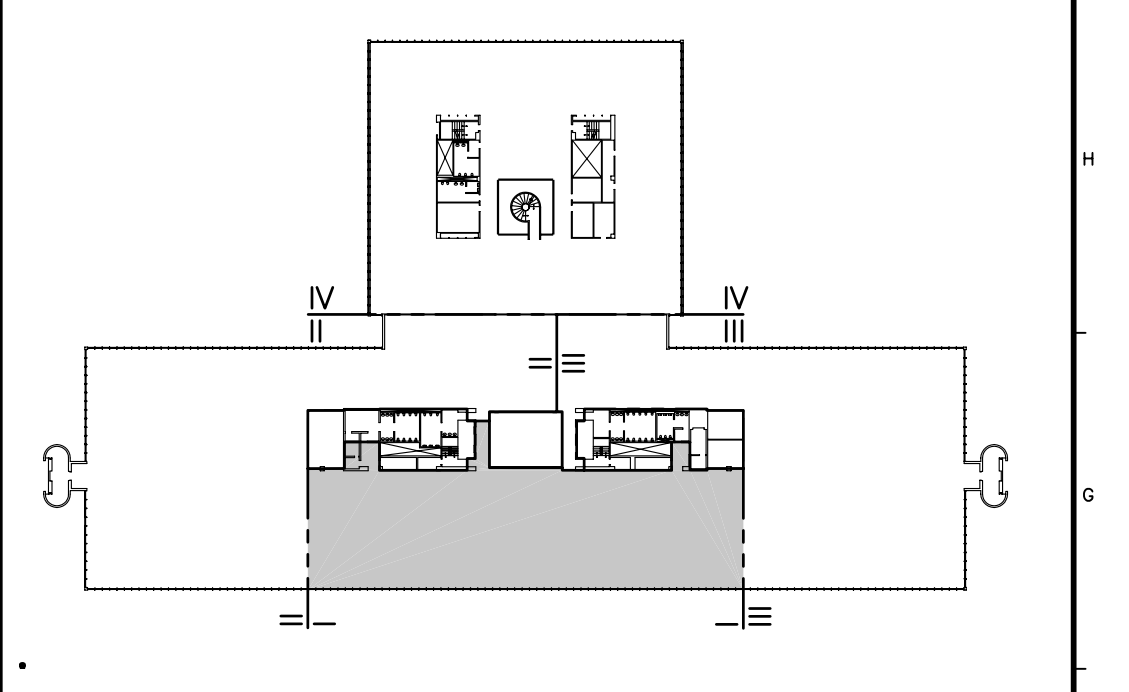


**NOTES:**

- SEE SHEET E-001 FOR LEGEND AND GENERAL NOTES.
- LIGHTS IN OPEN OFFICE TO BE CONTROLLED (SWITCHED) BY ANDOVER CONTROL SYSTEM. EACH BRANCH CIRCUIT TO BE CONTROLLED AS A SEPARATE ZONE AND BE WIRED SO THAT EVERY THIRD 4' SECTION TO SWITCH SEPARATELY TO ALLOW FOR THREE DIFFERENT LIGHT LEVELS.

**KEYED NOTE:**

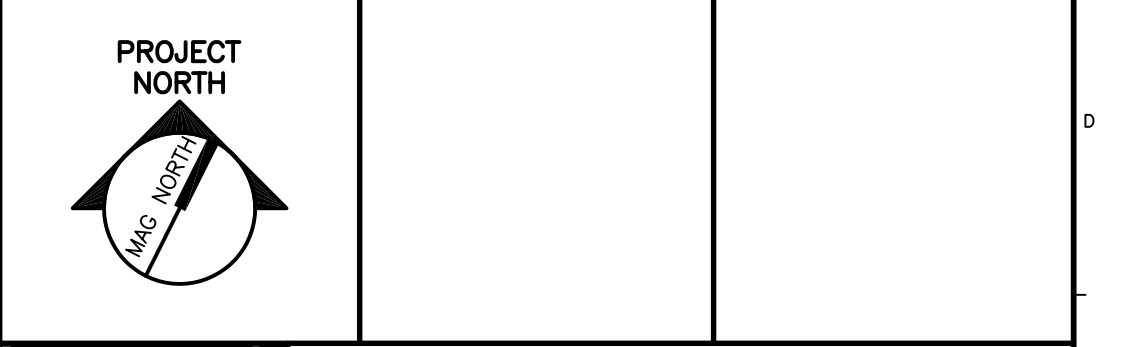
- RE-USE EXISTING EMERGENCY LIGHTING BRANCH IN OPEN OFFICE AREA TO FEED NEW EMERGENCY LIGHTS AND EXIT SIGNS SHOWN. NO EMERGENCY LIGHTING BRANCH CIRCUIT SHALL FEED MORE THAN FIFTY LIGHTS. FIELD VERIFY CIRCUIT NUMBER USED AND INDICATE ON RECORD DRAWINGS.
- USE 20 AMP. SINGLE POLE SPARE CIRCUIT BREAKERS IN EXISTING SQUARE D PANELBOARD TO FEED NEW LIGHTING AS INDICATED.



<b>F18 KEY PLAN</b>	
NOT TO SCALE	
0	ISSUED FOR CONSTRUCTION
REV.	DESCRIPTION
	DATE

**ISSUED FOR CONSTRUCTION**  
1-28-04

CURRENT ISSUE STATUS:



**SMRT** ARCHITECTURE ENGINEERING PLANNING  
SMRT  
144 Fore Street/P.O. Box 618  
Portland, Maine 04104  
tel. (207) 772-3846  
fax. (207) 772-1070

**UNIMPROVIDENT HO-1**  
2nd FLOOR OFFICE RENOVATIONS  
PORTLAND, ME.

**PHASE I LIGHTING PLAN**

SHEET TITLE:	1-28-04
SCALE: 1/8"=1'-0"	DATE: 1-28-04
PROJECT MANAGER: JLH	GRAPHIC SCALE: 0" 1"
JOB CAP/DRAWN: CEB/BGG	
A/E OF RECORD: DJT	SHEET No.
SMRT CAD FILE: EL101-03100-01	<b>EL101</b>
PROJECT No. 03100-01	