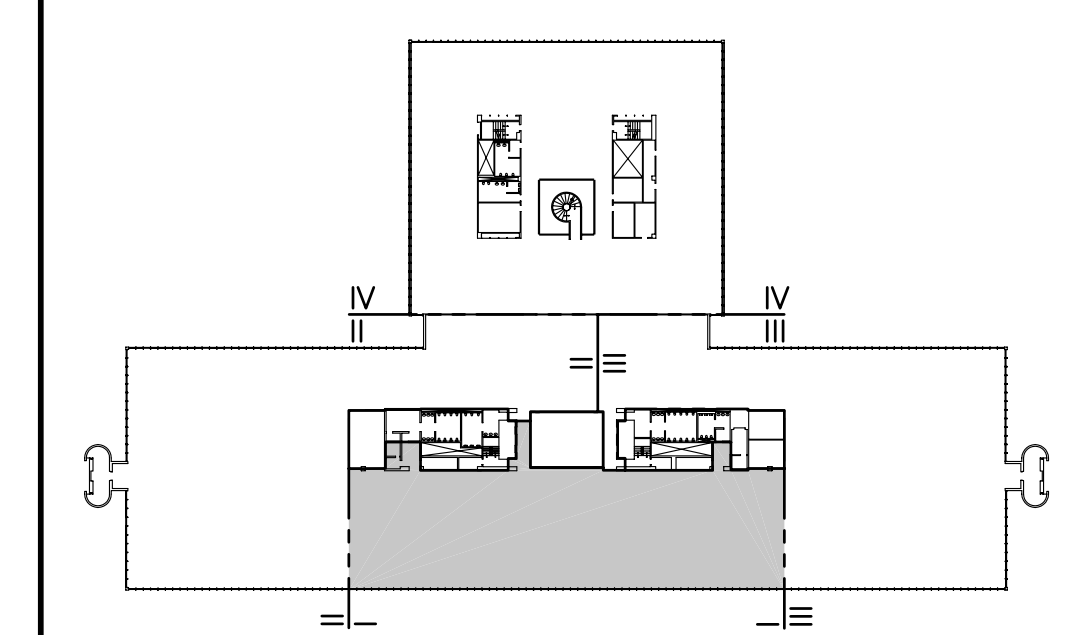


NOTES:

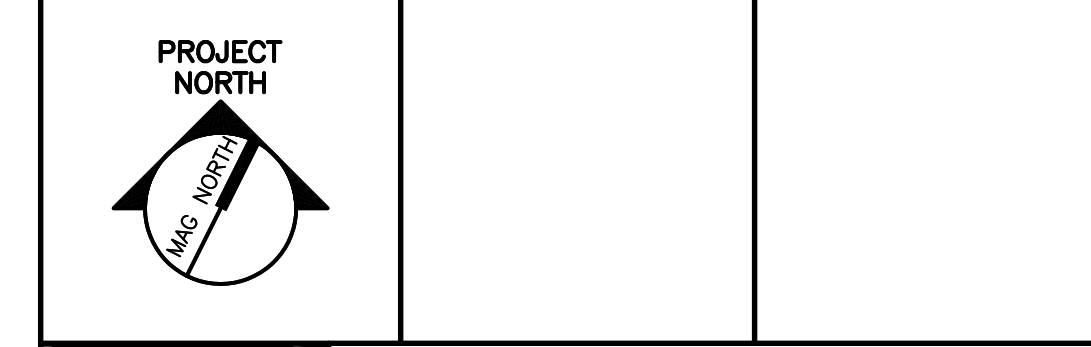
1. SEE SHEET E-001 FOR LEGEND AND GENERAL NOTES.
2. REMOVAL OF EQUIPMENT & DEVICES TO INCLUDE REMOVAL OF ALL CONDUIT & WIRING BACK TO SOURCE UNLESS NOTED OTHERWISE.
3. REMOVE SPEAKERS FOR WHITE NOISE SYSTEM TO ALLOW FOR CEILING GRID REPLACEMENT. RE-INSTALL AT LOCATIONS SHOWN ON EY101.
4. REMOVE PLENUM RATED CABLE FOR SMOKE DETECTORS AND SMOKE DETECTORS TO ALLOW CEILING GRID REPLACEMENT. RE-INSTALL AT LOCATIONS SHOWN ON EY101.



F18 KEY PLAN

NOT TO SCALE	
0	ISSUED FOR CONSTRUCTION
REV.	DESCRIPTION
	DATE

ISSUED FOR CONSTRUCTION
1-28-04



SMRT ARCHITECTURE ENGINEERING PLANNING
 SMRT
 144 Fore Street, P.O. Box 618
 Portland, Maine 04104
 tel. (207) 772-3846
 fax. (207) 772-1070

UNUMPROVIDENT HO-1
2nd FLOOR OFFICE RENOVATIONS
 PORTLAND, ME.

PHASE I
ELECTRICAL DEMOLITION PLAN

SHEET TITLE:	1-28-04
SCALE:	DATE:
PROJECT MANAGER:	GRAPHIC SCALE:
JOB CAP/DRAWN:	
A/E OF RECORD:	SHEET No.
SMRT CAD FILE:	ED101
PROJECT No.	03100-01

A1 REFLECTED CEILING DEMOLITION PLAN – PHASE I

1/8"=1'-0"