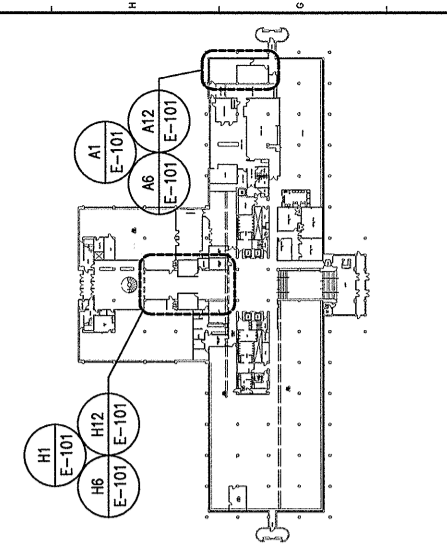
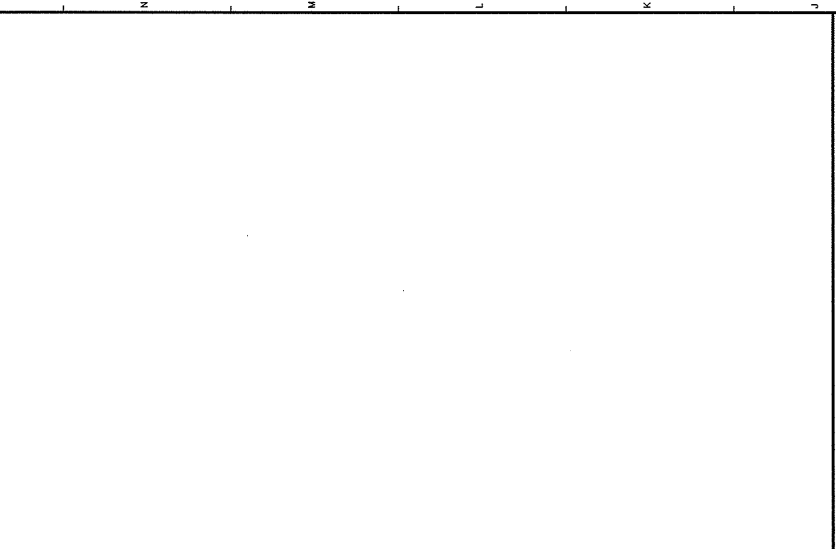


NOTE:

- SEE SHEET E-001 FOR LEGEND AND GENERAL NOTES.
- LOBBY LIGHTS TO BE CONTROLLED BY TWO POINTS IN ANDOVER CONTROL SYSTEM. LIGHTS TO BE CONTROLLED SEPARATELY FROM STAIRS. LIGHTS ON EMERGENCY CIRCUITS TO BE UNSWITCHED.
- ALL PANELED AREAS AND CIRCUIT BREAKERS FEEDING NEW LIGHTS AND RELOCATED SMOKE DETECTORS SHALL BE COORDINATE WITH OWNER FOR LOCATIONS OF ELECTRICAL ROOMS.

KEYED NOTES:

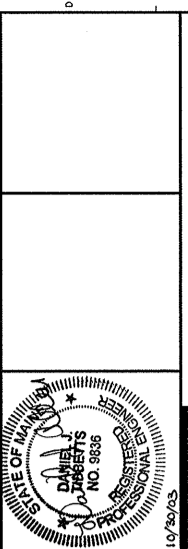
- CONNECT FIXTURES TO NEAREST EMERGENCY LIGHTING CIRCUIT. FIELD VERIFY CIRCUIT CAPACITY WITH AMMETER.
- PROVIDE FLOOR MOUNTED RECEPTACLE AND VOICE/DATA BOX UNDER CONFERENCE RM. TABLES. COORDINATE WITH OWNER FOR TYPE OF FLOOR BOX REQUIRED FOR EACH LOCATION. MOUNT BOXES IN CENTER OF ROOM.



ISSUED FOR CONSTRUCTION
10-30-03

REV.	DESCRIPTION	DATE
0	ISSUED FOR CONSTRUCTION	10-30-03

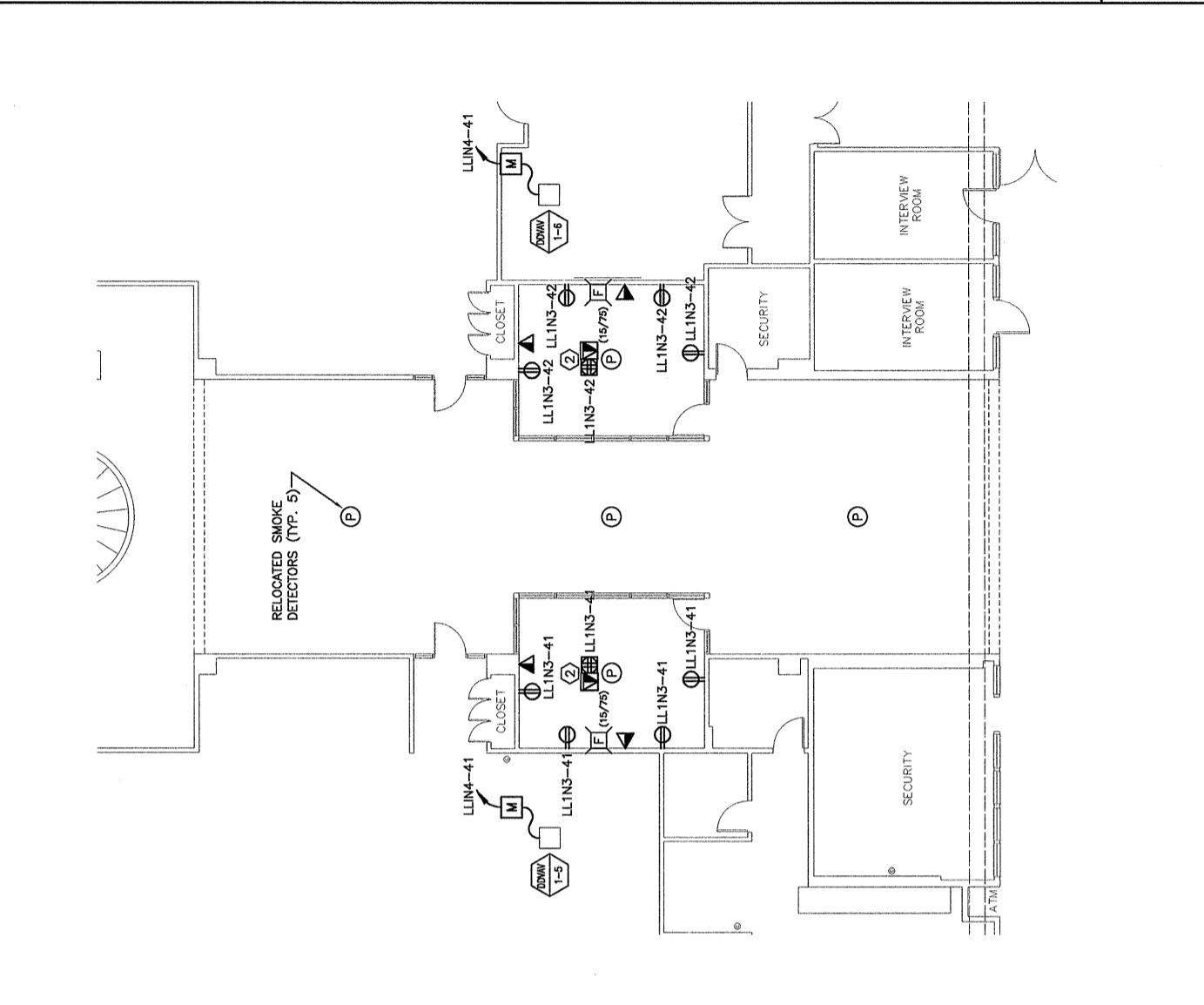
ISSUED FOR CONSTRUCTION
10-30-03



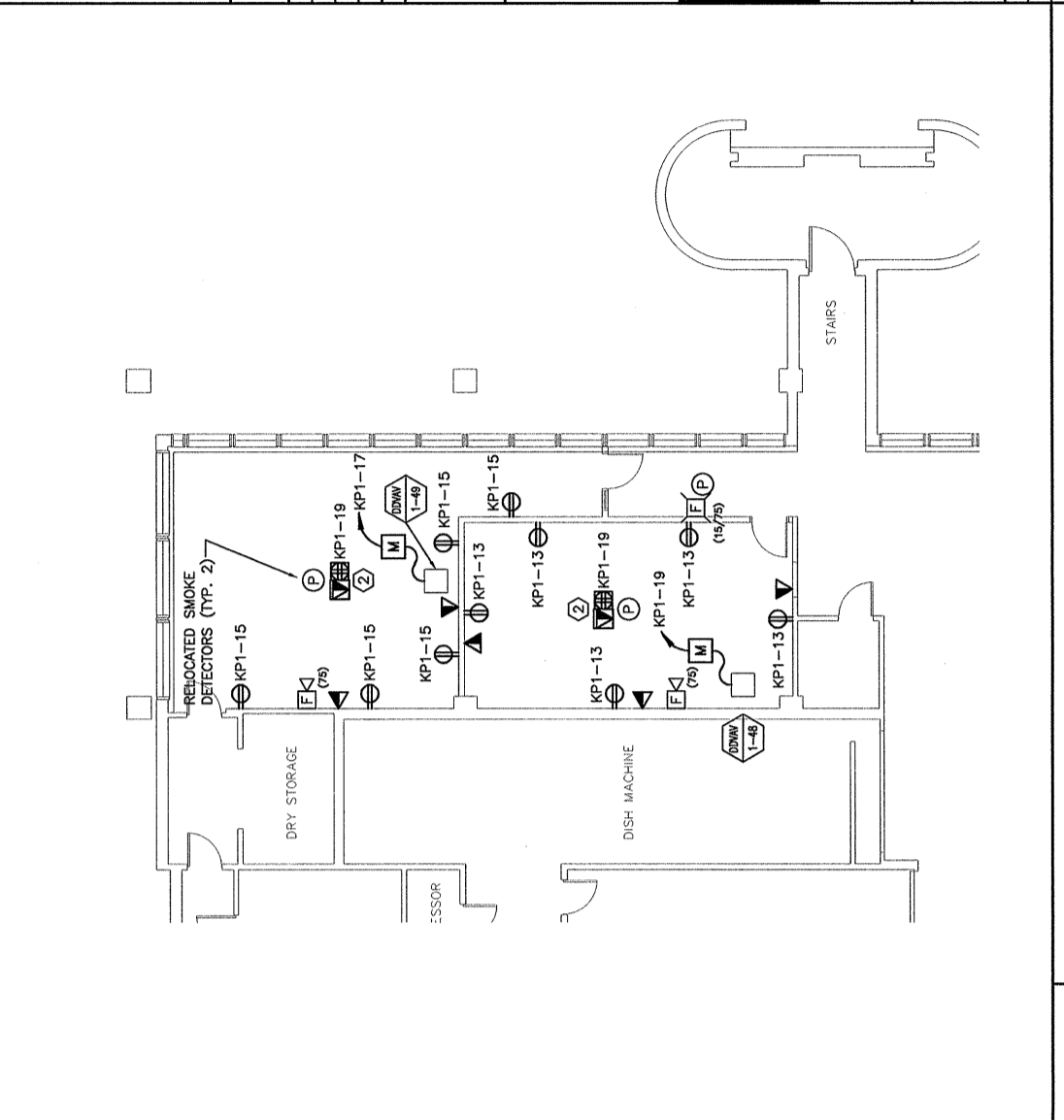
ARCHITECTURE ENGINEERING PLANNING
SMRT
144 Fore Street P.O. Box 618
Portland, Maine 04104
Tel: (207) 772-8866
Fax: (207) 772-0000

PROJECT:
**UNUM PROVIDENT
H01 CONFERENCE ROOMS**
PORTLAND, MAINE

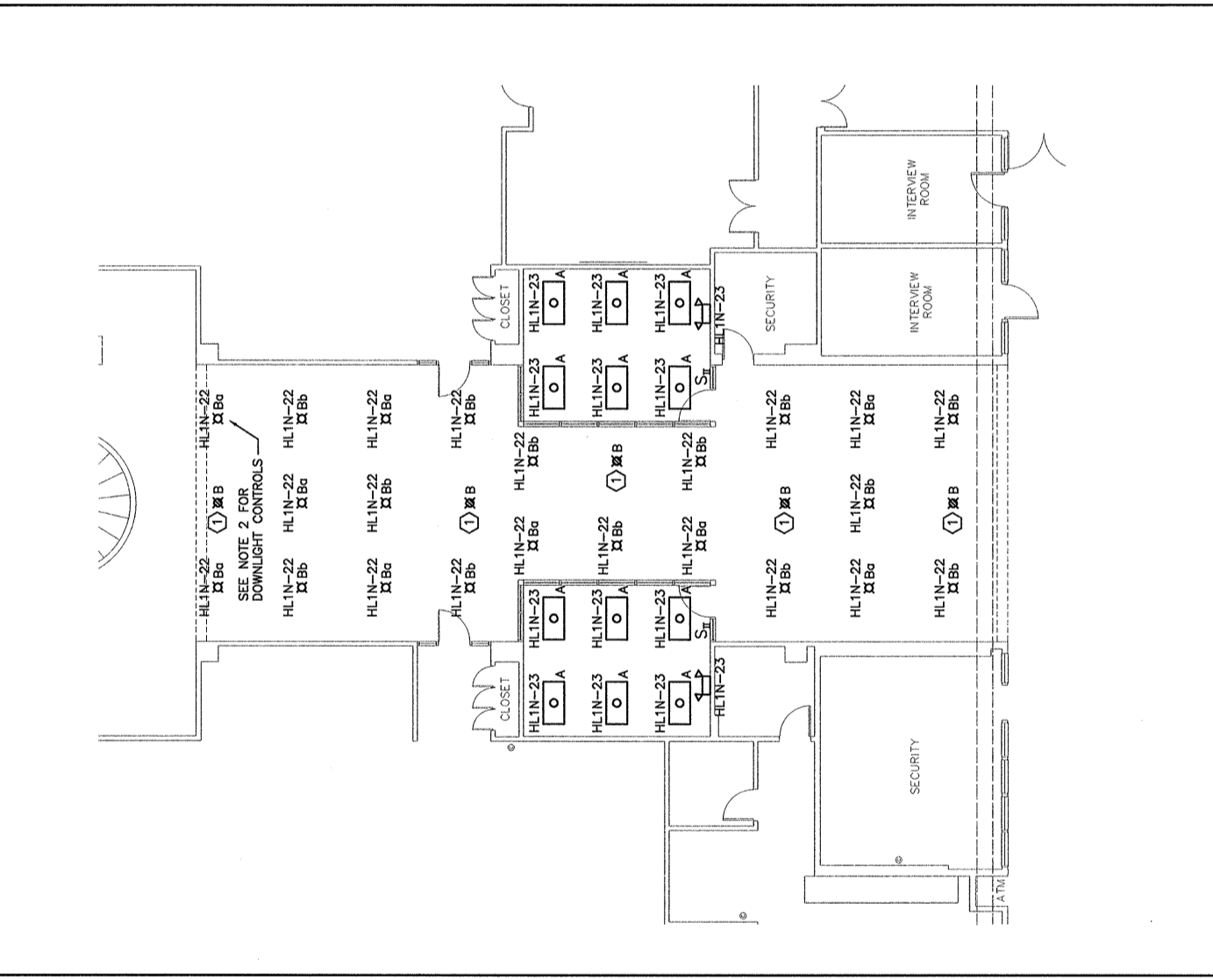
SHEET TITLE:	AS NOTED	DATE:	10-30-03
SCALE:	GRAPHIC SCALE:	1" = 1'	
PROJECT MANAGER:	JUL	RJL/BGG	
A/E OF RECORD:	DJT		
SMRT CAD FILE:	E-101-03125		
PROJECT No.:	03125		
SHEET No.:	E-101		



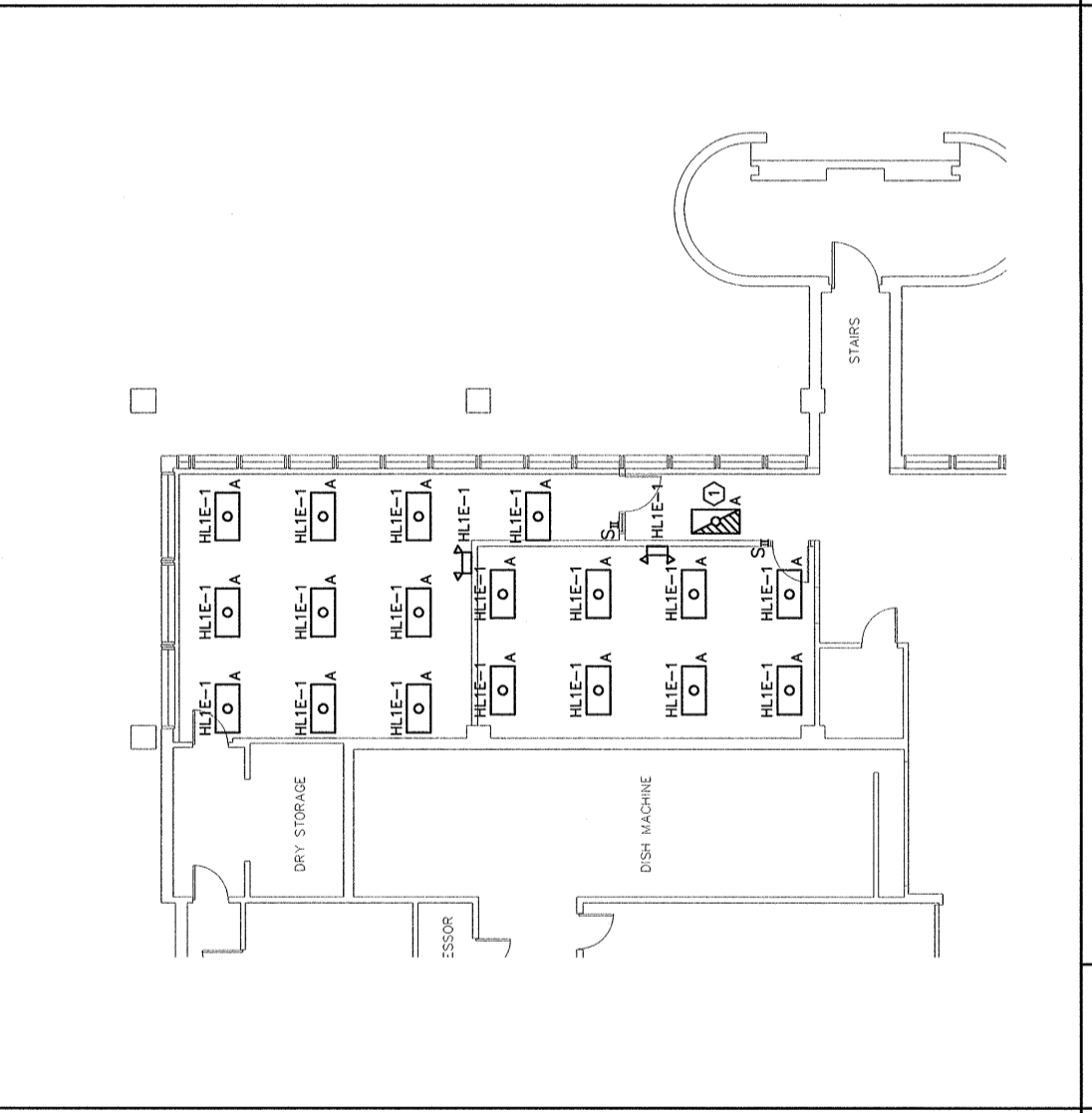
H12 POWER & SYSTEMS PLAN
1/8"=1'-0"



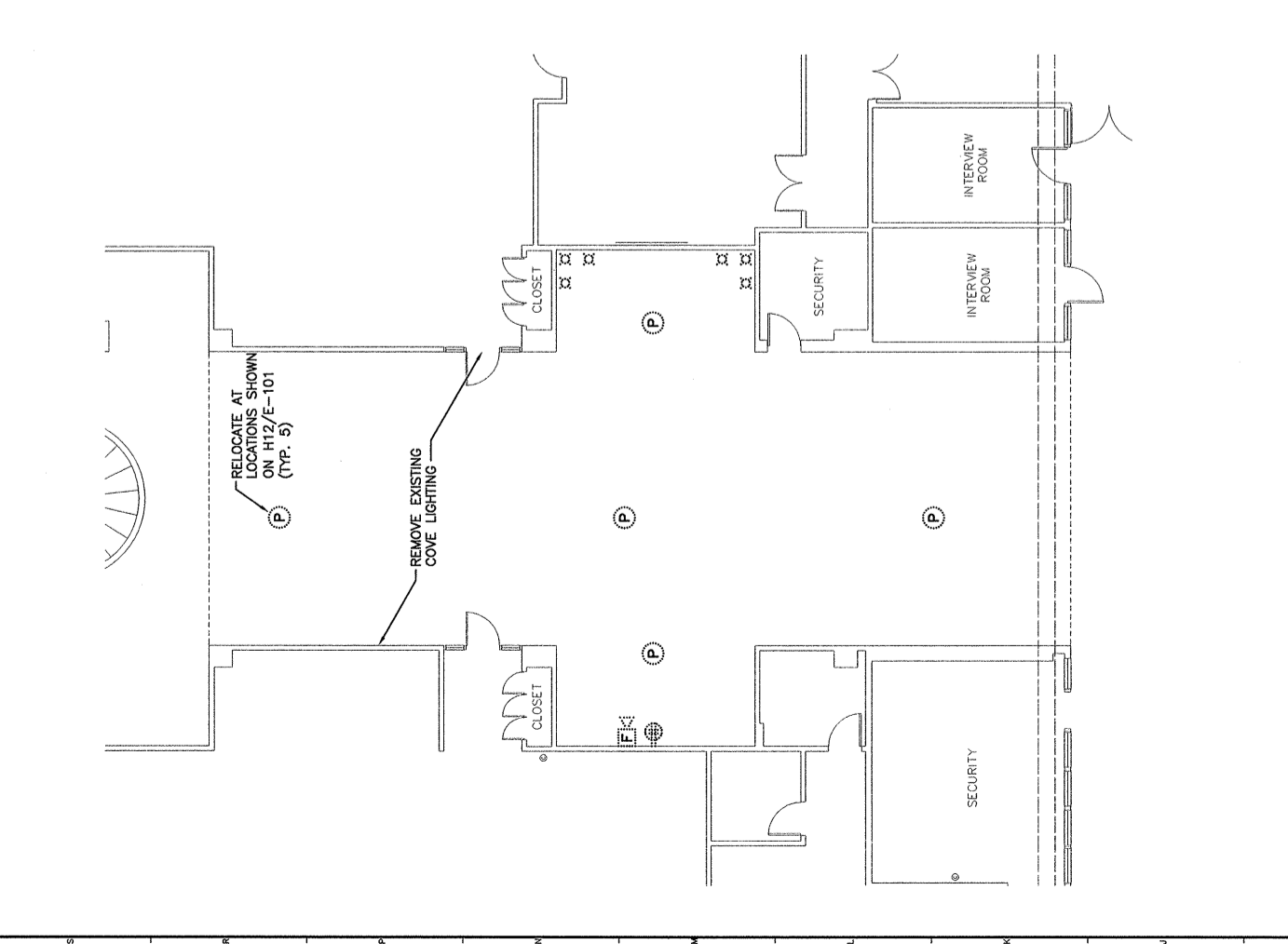
A12 POWER & SYSTEMS PLAN
1/8"=1'-0"



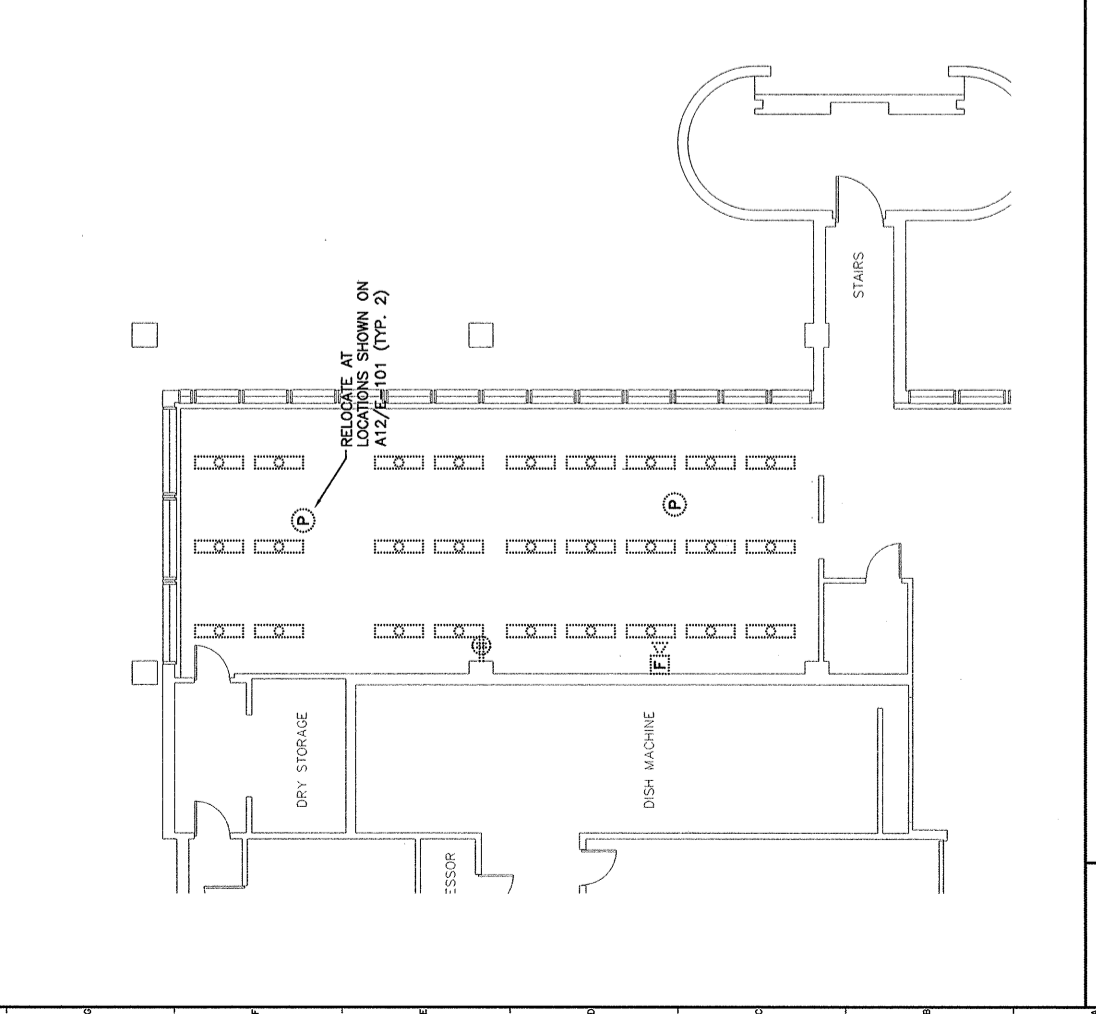
H6 LIGHTING PLAN
1/8"=1'-0"



A6 LIGHTING PLAN
1/8"=1'-0"



H1 DEMOLITION PLAN
1/8"=1'-0"



A1 DEMOLITION PLAN
1/8"=1'-0"