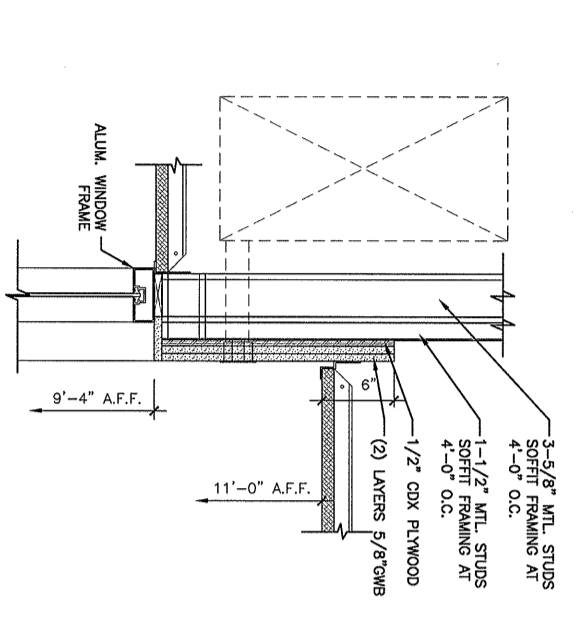
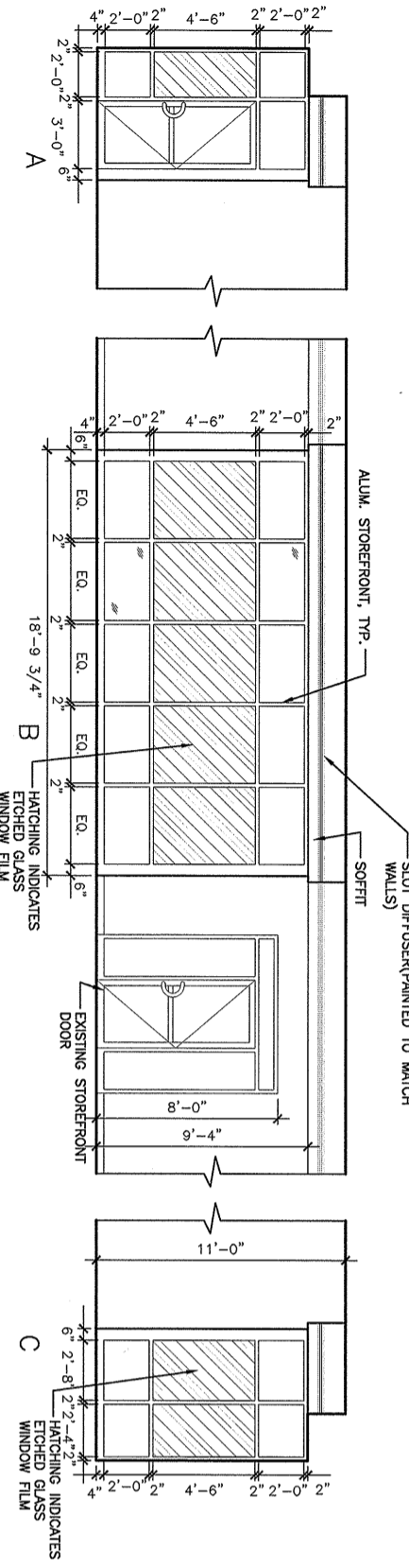


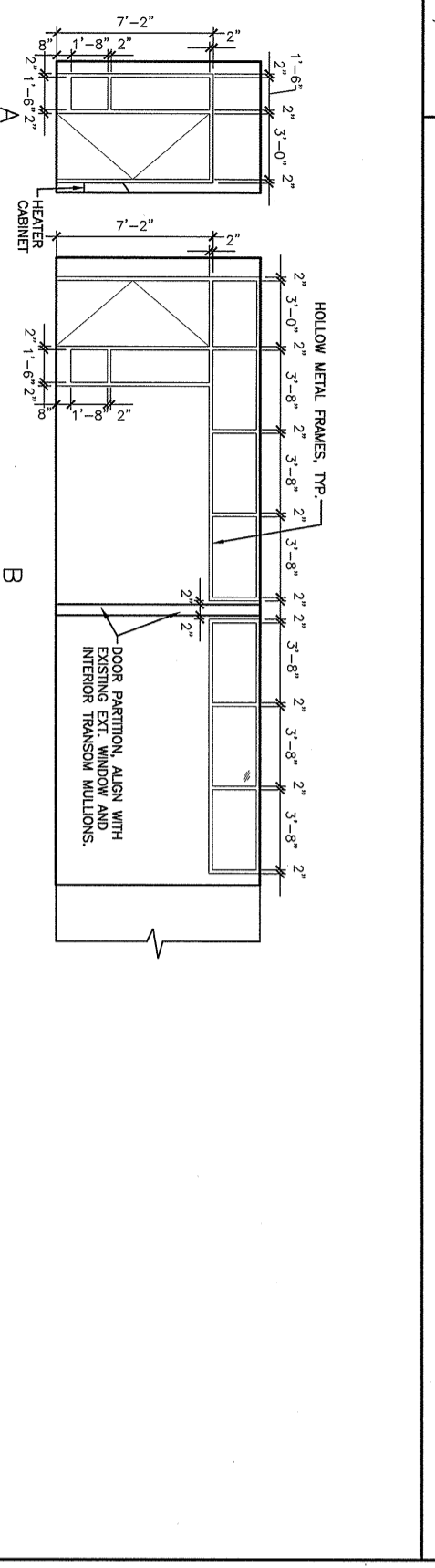
N1 SOFFIT DETAIL
N3 SOFFIT DETAIL
N7 SOFFIT DETAIL



J1 SOFFIT DETAIL
J3 SOFFIT DETAIL
J7 SOFFIT DETAIL



E1 INTERIOR ELEVATION, CONFERENCE 131, 132



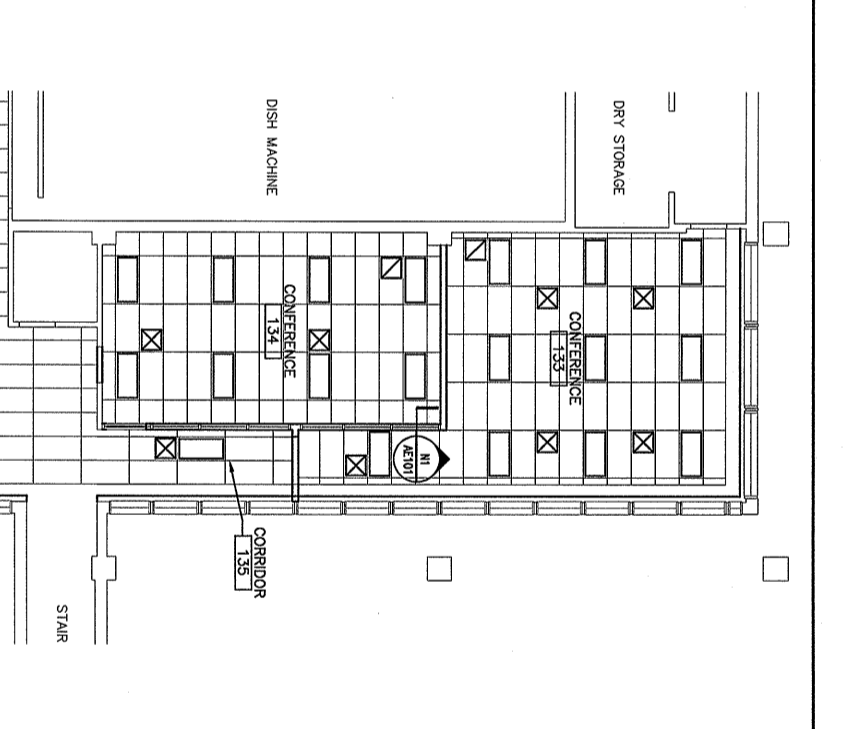
A1 INTERIOR ELEVATION, CONFERENCE 134

ROOM FINISH SCHEDULE

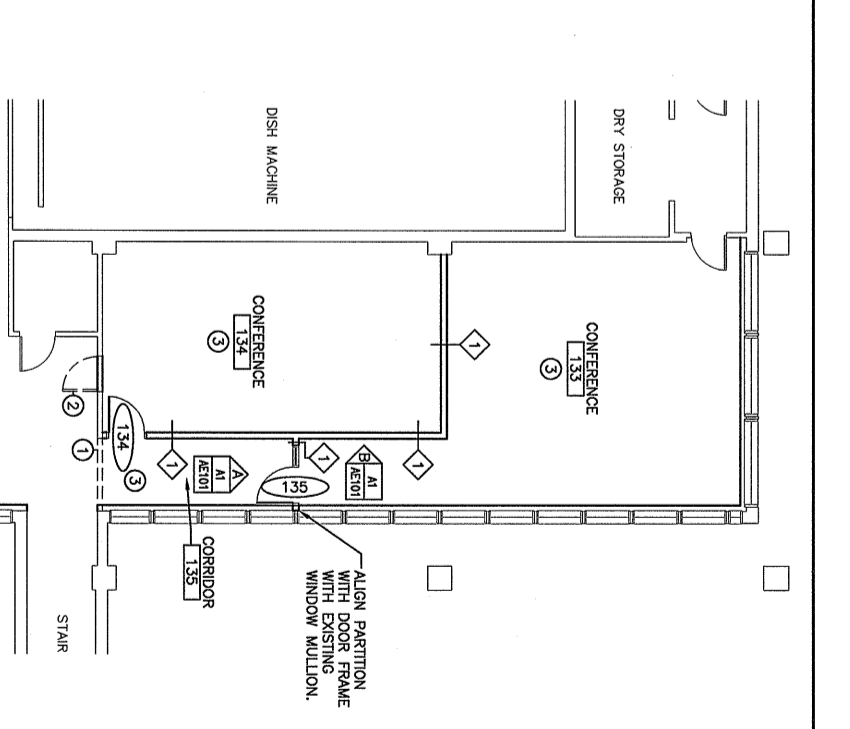
ROOM NUMBER	ROOM NAME	FLOOR	BASE	WALLS	CEILING	ROOM NUMBER	REMARKS
130	CORRIDOR	EXIST	WOOD	PAINT	PAINT	130	SOFFIT AT 9'-4"
131	CONFERENCE	OPT. TILE 1	PAINT	PAINT	ACT 1 / SWB	131	
132	CONFERENCE	OPT. TILE 1	RES	PAINT	ACT 2	132	
133	CONFERENCE	OPT. TILE 1	RES	PAINT	ACT 2	133	
134	CONFERENCE	OPT. TILE 1	RES	PAINT	ACT 2	134	
135	CORRIDOR	OPT. TILE 2	RES	PAINT	ACT 2	135	

DOOR SCHEDULE

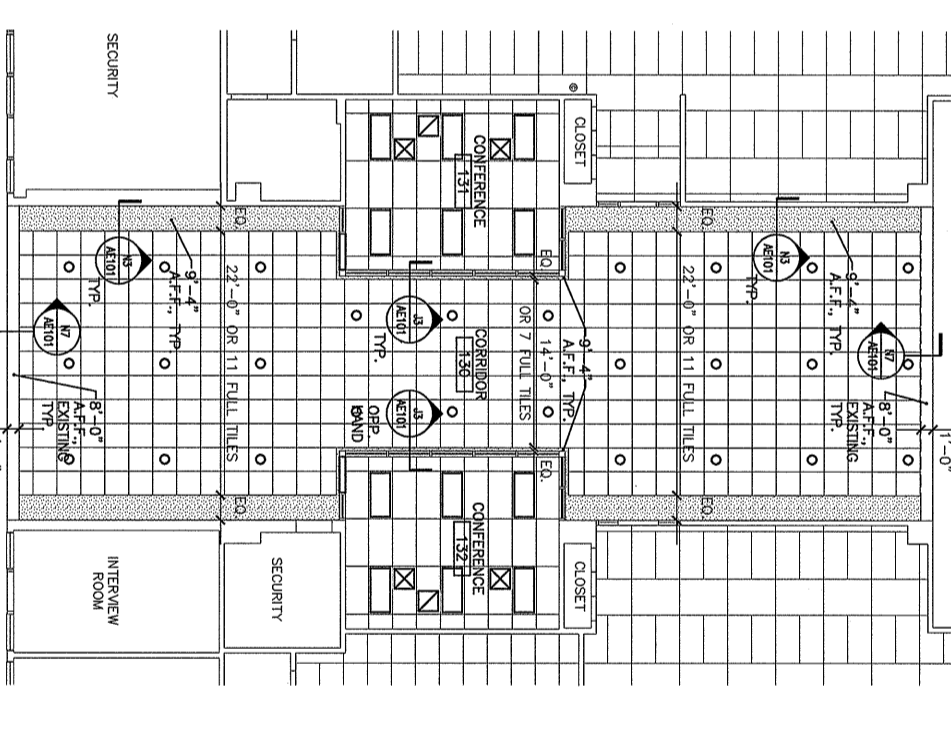
DOOR NUMBER	SIZE	DOOR MATERIAL	ELEVATION	GLAZING	FRAME HEAD	JAMB	SILL	HWS	RATING (MIN.)	DOOR NUMBER	REMARKS
131	3'-0"x7'-0"	ALUM.	SEE INT. ELEV.	TEMP.	ALUM.	ALUM.	ALUM.	1	131		
132	3'-0"x7'-0"	ALUM.	TEMP.	TEMP.	ALUM.	ALUM.	ALUM.	2	132		
134	3'-0"x7'-0"	HM	TEMP.	TEMP.	HM	HM	HM	2	134		
135	3'-0"x7'-0"	HM	TEMP.	TEMP.	HM	HM	HM	2	135		



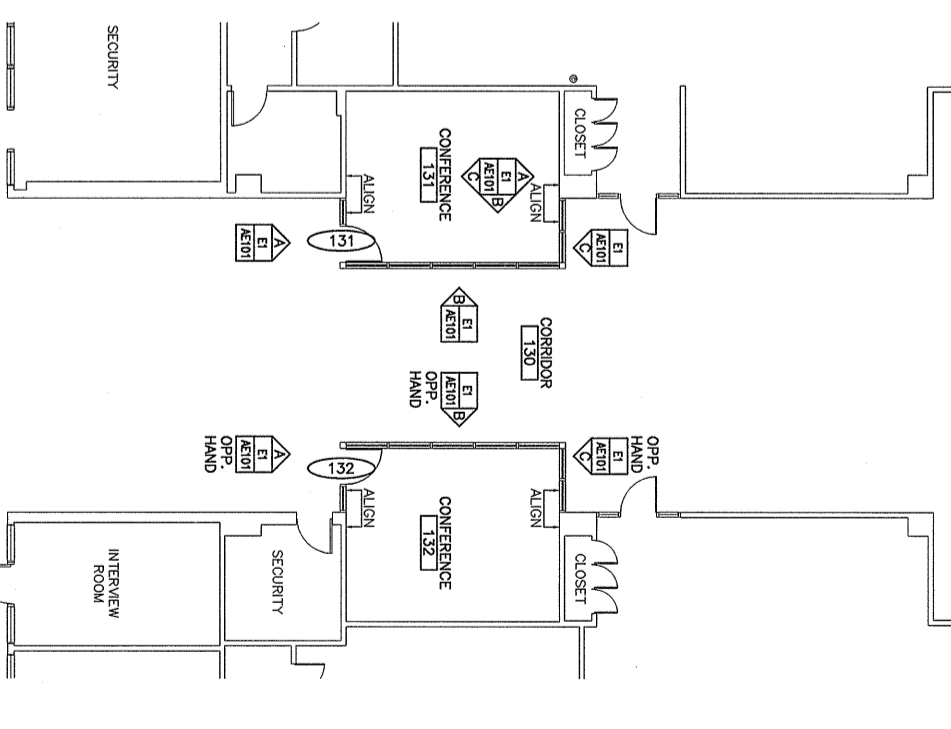
H10 PART. REFLECTED CEILING PLAN



H14 PART. FLOOR PLAN



A10 PART. REFLECTED CEILING PLAN



A14 PART. FLOOR PLAN

FINISH MATERIAL NOTES:

- REPAIR/REFINISH WOOD BASE IN 131 AS REQUIRED.
- CARPET TILE 1 TO BE MILLIKEN WINDOWPANELS.
- CARPET TILE 2 TO BE BLACK BRUGGER.
- RESILIENT BASE TO BE 4" BLACK STRAIGHT.
- HOLLOW METAL DOORS AND FRAMES TO BE PAINTED, BENJAMIN MOORE COLOR, ARMY GREEN Z141-30.
- ALL WALLS TO BE PAINTED, CALIFORNIA PAINT COLOR BOTANY BEIGE, 8221W.
- ACT 1 - 9/16" GRID WITH ARMSTRONG ULTIMA #1912.
- ARMSTRONG SUPERFINE SHADOW MOLDING AT PERIMETER, FISSEBRED #172S.

KEYED DEMO NOTES:

- REMOVE PORTION OF WALL AS REQUIRED PER PLAN.
- REMOVE DOOR AND FRAME COMPLETE.
- REMOVE CEILING

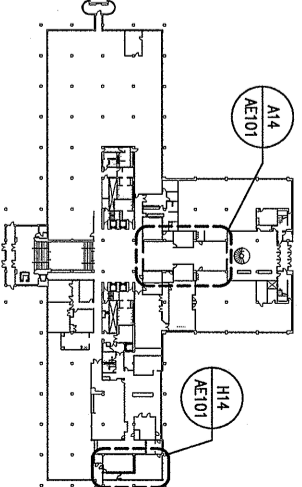
HARDWARE SETS:

SET #1: EACH DOOR TO RECEIVE, HINGES, CLOSER, PUSH, PULL, PARTITION OR THRESHOLD, AND STOP. DOORS TO BE EXISTING AT A ADJACENT DOORS.

SET #2: EACH DOOR TO RECEIVE, HINGES, LATCH SET, AND STOP.

PARTITION LEGEND:

25 WSS (WALL) 3-5/8" x 1-1/2" FLOOR AND CEILING
 3-5/8" x 1-1/2" 20 GAGE STUDS WITH 3/8" RETURNS
 SPACED 16" O.C. FASTEN 5/8"x4" GIB TO BOTH SIDES OF STUDS & TRACKS WITH 1" TYPE S SELF TAPPING SCREWS AT 8" O.C. ALONG EDGES & 12" O.C. INTERED. INSTALL SIZES OF ASSEMBLY, APPLY 2" PAPER JOINTS AND FINISH ABOVE CEILING. ACoustICAL BATT INSULATION IN STUD CAVITIES.



KEY PLAN - 1ST FLOOR

ISSUED FOR CONSTRUCTION
 10-30-03

PROJECT: UNUM PROVIDENT
 H01 CONFERENCE ROOMS
 PORTLAND, OREGON

PROJECT: UNUM PROVIDENT
 H01 CONFERENCE ROOMS
 PORTLAND, OREGON

ARCHITECTURE ENGINEERING PLANNING
 S.M. R.T.
 144 First Street, P.O. Box 618
 Portland, Maine 04104
 Tel: (207) 772-3346
 Fax: (207) 772-1000

PROJECT MANAGER: JIH
 JOB CDP/DRAWN: MDR
 A/E OF RECORD: JIH
 SHEET CDD TITLE: AE101-03125
 PROJECT No. 03125

DATE: 10-30-03
 SCALE: AS NOTED
 GRAPHIC SCALE: 0" = 1'-0"

FLOOR PLANS, REFLECTED CEILING PLANS, SCHEDULES AND DETAILS