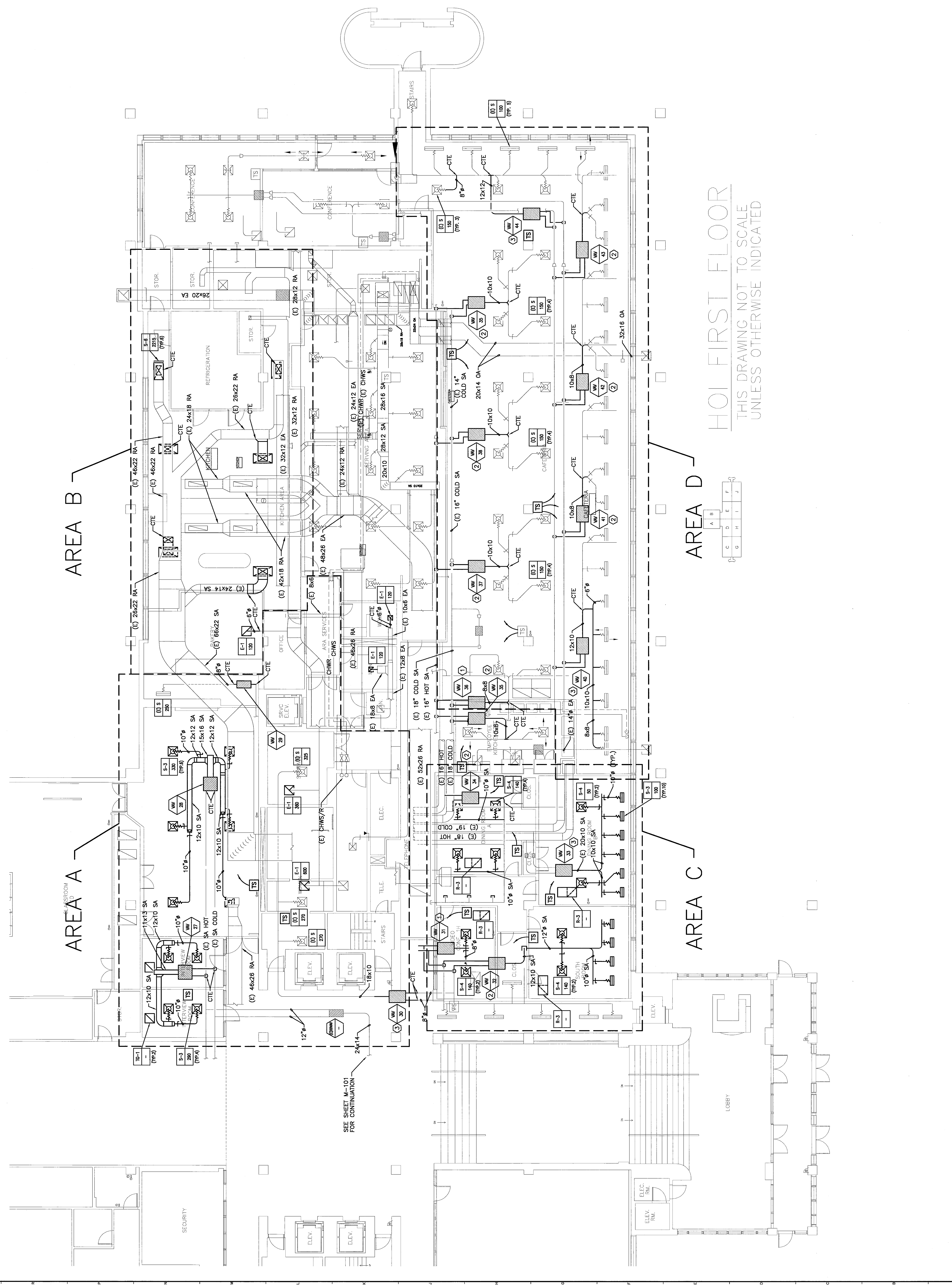


NOTES:

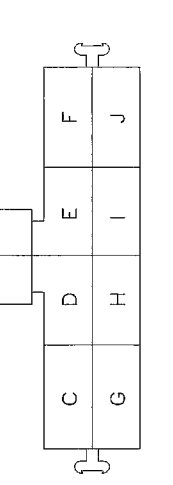
1. SEE SHEET M-01 FOR LEGEND AND ABBREVIATIONS.
2. RE-BALANCE SUPPLY DEFUSERS SERVED BY NEW TERMINAL UNITS TO VOLUME INDICATED.

KEYED NOTES:

- ① PROVIDE 8-INCH TAKE-OFFS SERVING TERMINAL UNIT.
- ② PROVIDE 10-INCH TAKE-OFFS SERVING TERMINAL UNIT.
- ③ PROVIDE 12-INCH TAKE-OFFS SERVING TERMINAL UNIT.
- ④ PROVIDE 14-INCH TAKE-OFFS SERVING UNIT.



HO1 FIRST FLOOR
THIS DRAWING NOT TO SCALE
UNLESS OTHERWISE INDICATED



AREA D

AREA C

AREA A

AREA B

SEE SHEET M-01
FOR CONTINUATION

LOBBY

ELEV. RAIL

ELEV. RAIL

ELEV. RAIL

ELEV. RAIL

ELEV. RAIL

ELEV. RAIL

ELEV. RAIL

ELEV. RAIL


ELEV. RAIL

ELEV. RAIL

REV.	ISSUED FOR CONSTRUCTION	DATE
0	ISSUED FOR CONSTRUCTION	5-11-06

ISSUED FOR CONSTRUCTION
5-11-06

CURRENT ISSUE STATUS:

PROJECT MANAGER:  ARCHITECTURE ENGINEERING PLANNING
141 Elm Street, 3rd Floor
Portland, Maine 04104
Tel: (207) 773-3446
Fax: (207) 772-1070

PROJECT: **UnumProvident HO-1
MITCO VALVE REPLACEMENT**
PORTLAND, ME.

PROJECT TITLE: **HVAC PLAN
EAST SIDE**

SHEET TITLE:	1/8"=1'-0"	DATE:	5-11-06
SCALE:		GRAPHIC SCALE:	0'
PROJECT MANAGER:	JJI		
JOB CAD/DRAWN:	CAH		
A/E OF RECORD:	FWJ		
SMART CAD FILE:	M-102-06006		
PROJECT NO.:	06006		

SHEET NO.	M-102
-----------	-------

*

*