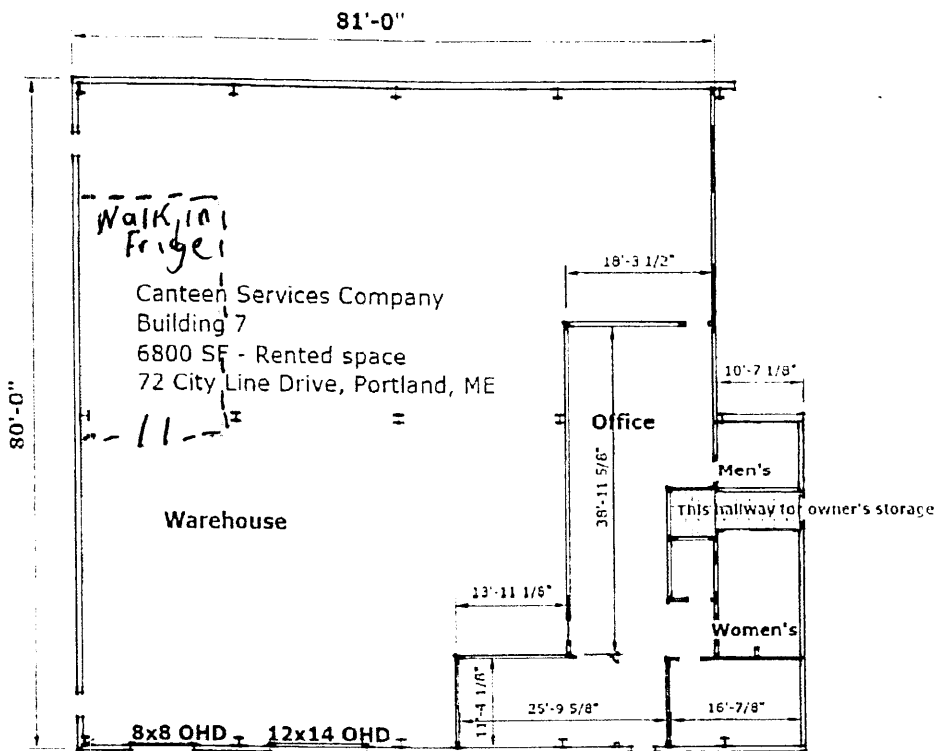


EXHIBIT B



Transport Leasing Corp. Building 7 - Partial Plan of 15,200 SF 80 x 190

The new walk-in cooler will have dimensions of 12'X14'X8' with a 34"X78" door. Materials used are provided by Southeast Cooler (www.secooler.com). It will be cooled using a Copeland 1.5 HP compressor with scroll condensing unit. It is ventilated by a Larkin Larkin LCAC 3 fan ECM evaporator. It will have a heavy-duty stainless steel floor.