

100'-0"

120'-0"

2

3

4

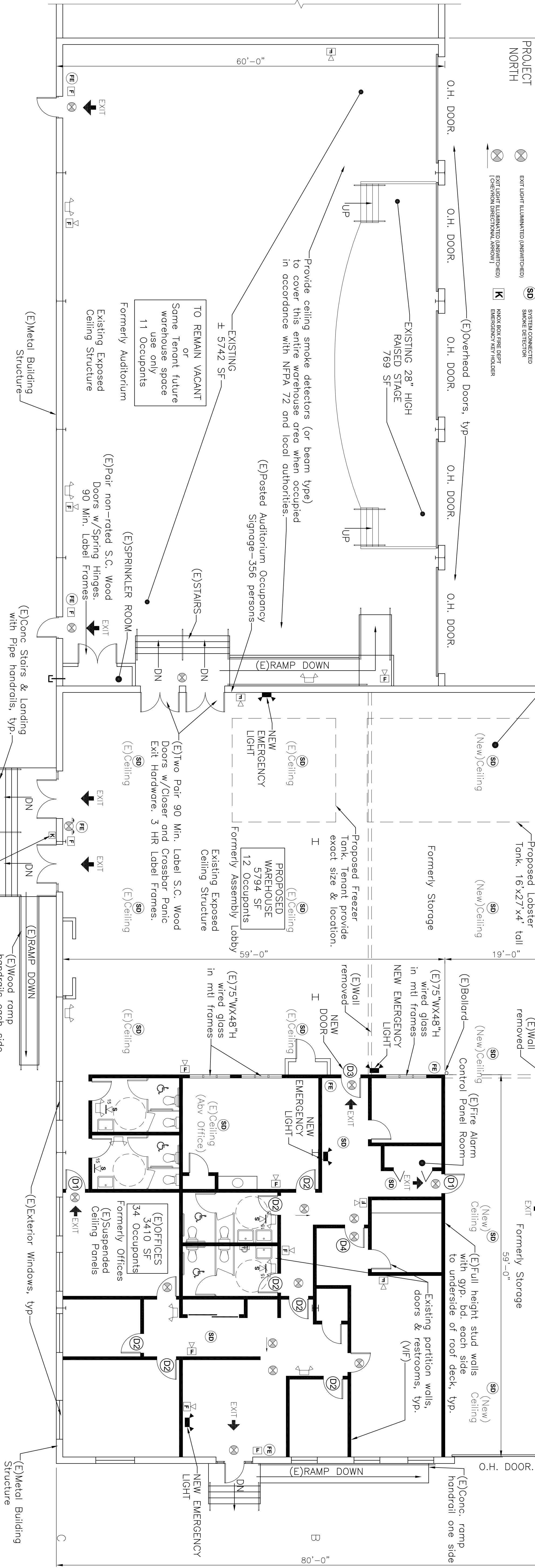
5

PROJECT NORTH

- LEGEND**
- (FE) FIRE EXTINGUISHER
 - (F) FIRE ALARM AUDIOVISUAL
 - (E) SELF CONTAINED EMERGENCY LIGHT WITH PHOTO
 - (E) FIRE ALARM PULL STATION
 - (S) FIRE ALARM VISUAL STROBE 15 Candela
 - (SD) SYSTEM CONNECTED SMOKE DETECTOR
 - (K) KNEX BOX FIRE DEPT EMERGENCY KEY HOLDER
 - (E) EXIT LIGHT ILLUMINATED (UNSWITCHED)
 - (E) EXIT LIGHT ILLUMINATED (UNSWITCHED) (OVERHUNG DIRECTIONAL ARROW)

Attendant: Provide "Reflected Beam Type" smoke detection in warehouse area (operation of fork lifts) in lieu of existing/new ceiling smoke detectors in accordance with NFPA 72. Confirm layout with local authority having jurisdiction prior to installation.

Note: Provide emergency lighting to meet requirements of General Notes 4 & 5 below, typ.



DOOR SCHEDULE

MARK	TYPE	SIZE	F.R.	MAT.	REMARKS	MAT.	F.R.	REMARKS
D1	EXISTING	3'-0" x 7'-0"	1 1/2 HR	S.C. WOOD	FR. HA. CO. P.H.	METAL	1 1/2 HR	MINIMUM 1 HOUR FIRE RATED DOOR AND FRAME REQUIRED
D2	EXISTING	3'-0" x 7'-0"	20 MINUTE	S.C. WOOD	FR. HA	STEEL	-	REMOVE EXISTING S.C. WOOD DOOR-NOT LABELED FIRE RATED EXISTING METAL FRAME (CONFER/BA OR INSTALL MIN. 60 MIN. LABEL)
D3	NEW	3'-0" x 7'-0"	1 HR	S.C. WOOD	FR. HA. CO. P.H.	STEEL	1 HR	-
D4	EXISTING	3'-0" x 7'-0"	NON-RATED	S.C. WOOD	HA	STEEL	-	-

DOOR SCHEDULE ABBREVIATIONS

CLD.	DOOR CLOSER	KL.	KEY LOCK	S.C.	SOLID CORE
D59	DOOR SILENCERS	M/L.	METAL	S.H.	SPRING HINCE
D5	DOOR PULL	P	DOOR PULL	UC	UNDERCUT
D5T	DOOR STOP	PS	PASSAGE SET	WC	WOOD (SOUL)
FR	FIRE RATED	P.H.	FIRE EXIT PANIC HARDWARE (NOTE 2)	WG	WIRE GLASS
HA	HANDICAP ACCESSIBLE	P.P.	PUSH PLATE	WS	WEATHERSTRIPPING
HM	HOLLOW METAL	PNS	PRIVACY SET	WF	VERIFY IN FIELD
K	KICKPLATE (PUSH SIDE)	S.	STEEL		

PRELIMINARY - NOT FOR CONSTRUCTION

General Notes

- Existing Building is equipped with an Automatic Sprinkler System (visual observation) Contractor Confirm operation, supervisory requirement and Fire Department notification system with Authority having jurisdiction.
- All dimensions shall be verified in field.
- All existing and new fire alarm devices shall be interconnected and fully operational. Contractor test Sprinkler System and Fire Alarm & confirm compliance.
- Emergency lighting shall be provided for not less than 1 1/2 hour in the event of power failure. Emergency lighting facilities shall be so arranged to provide initial illumination that is not less than an average of 1 Ft candle (10.8 Lux) and at any point not less than 0.1 Ft candle (1.1 Lux) measured along the path of egress at floor level. Contractor shall space accordingly based on emergency light fixture selected to achieve minimum illumination as described herein. Consult Engineer for Photometric Design and equipment selection for compliant layout (especially in warehouse areas).
- Emergency power system for lighting shall be at least Type 10, Class 1.5. Level 1 in accordance with NFPA 110. Unit equipment and battery system for emergency luminaires shall be listed to UL 924. Emergency lighting shall be either continuously in operation or shall be capable of repeated automatic operation without manual intervention.
- Fire alarm devices shown on this plan are existing (visual observation) unless indicated "NEW".

CODE NOTES

- Proposed Tenant "Maine Lobster Now" consists of Storage, Packaging and Shipping of Lobsters with accessory business offices.
- APPLICABLE CODES: 2009 NFPA101, 2009 IBC, MBEC 2009
- ZONE - B4
- CONSTRUCTION TYPE - 2B (Visual Inspection). Existing Metal Building.
- EXISTING AUTOMATIC SPRINKLER SYSTEM, CONFIRM "SUPERVISED" STATUS & FIRE DEPT. NOTIFICATION SYSTEM.
- OCCUPANCY USE - NFPA - MIXED, STORAGE/Ordinary Hazard (Contents)/BUSINESS
- IBC - MIXED, STORAGE S-2/BUSINESS (Accessory incidental)
- OCCUPANCY LOADS:
- NFPA101: STORAGE - N/A (Table 7.3.1.2)
- IBC: WAREHOUSES - 500 SF/PERSON (Table 1004.1.1)
- BUSINESS - 100 SF/PERSON
- SEPARATION OF OCCUPANCY:
- NFPA101 - Table 6.11.4.4.1(b) Storage to Business: 2 HR
- Table 6.11.4.4.3 above 1 HR with Approved Automatic Supervised Sprinkler System
- IBC - Table 508.4 Storage S-2 to Business: 1 HR with Approved Automatic Supervised Sprinkler System
- TRAVEL DISTANCE:
- MAXIMUM (Code) - Ordinary Hazard-400 Feet with Sprinkler System
- EXISTING - 90 Feet
- COMMON PATH - (Code) 100 Feet with Sprinkler System
- COMMON PATH - (Existing) 40 Feet

MAINE LOBSTER NOW-INTERIOR FIT UP
58 CITY LINE DRIVE
PORTLAND, MAINE
FLOOR PLAN, SCHEDULE AND NOTES

REV.	DATE	STATUS
0	11-22-17	SUBMITTED FOR PERMITS

JOHN H. LEASURE ARCHITECT, INC
 6 Q STREET
 SOUTH PORTLAND, MAINE 04106

