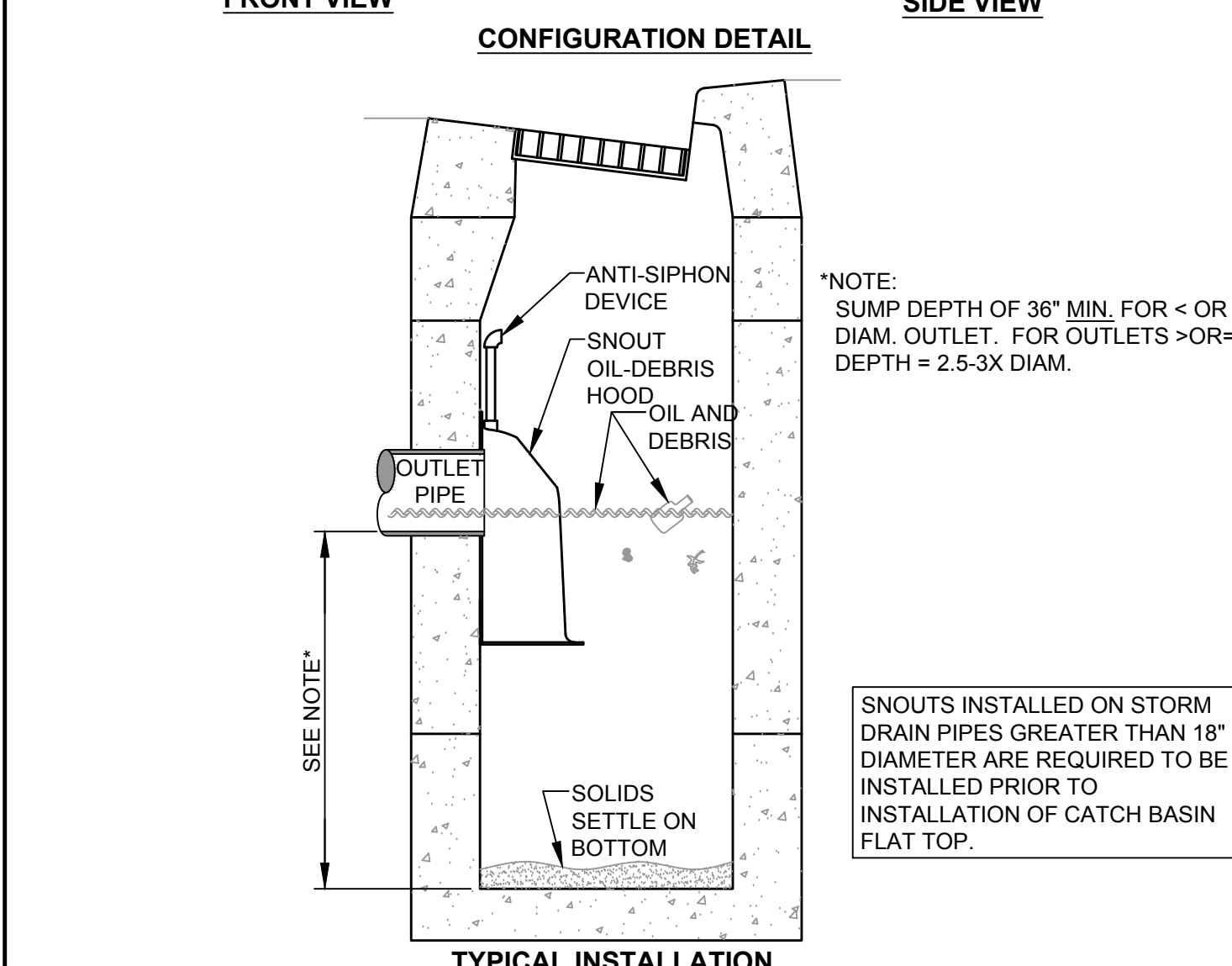
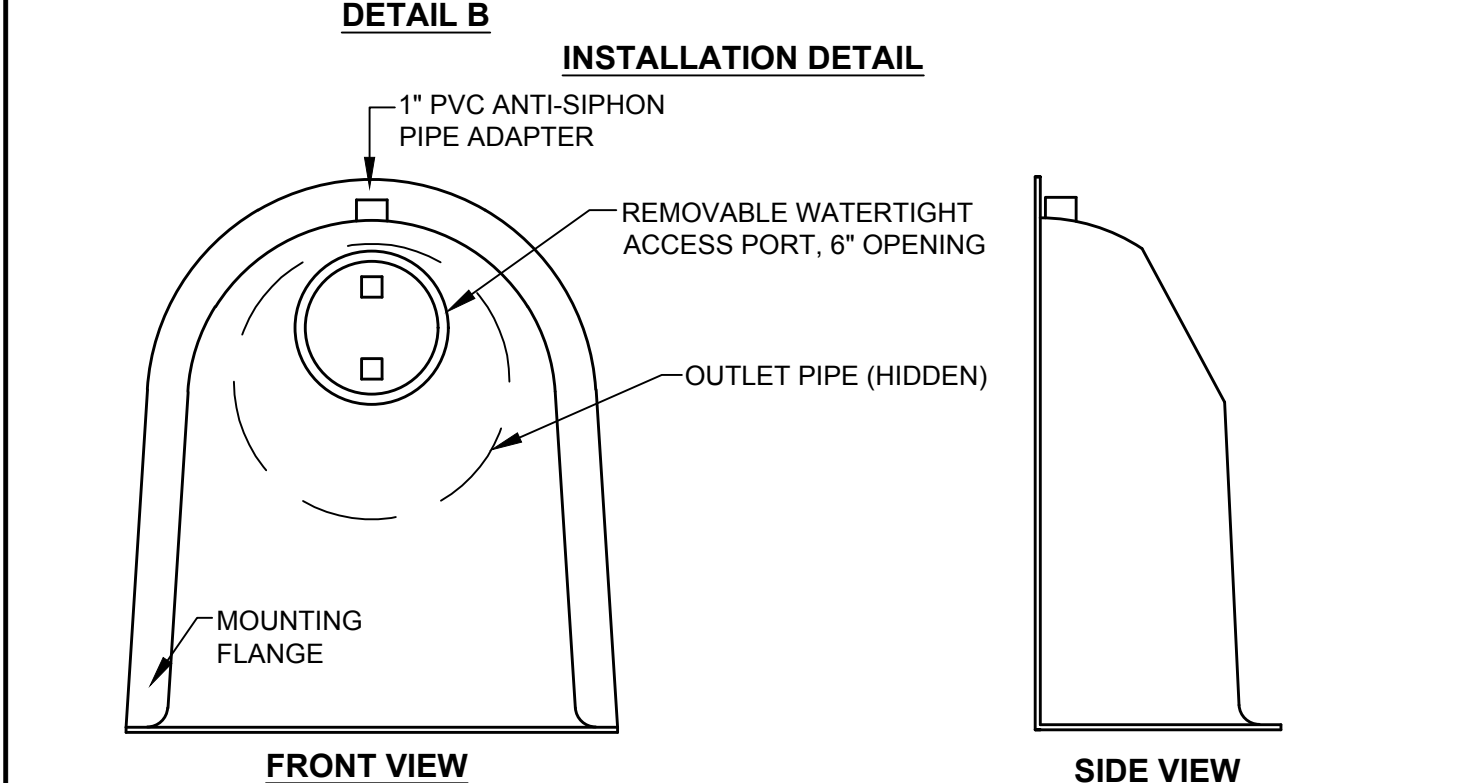
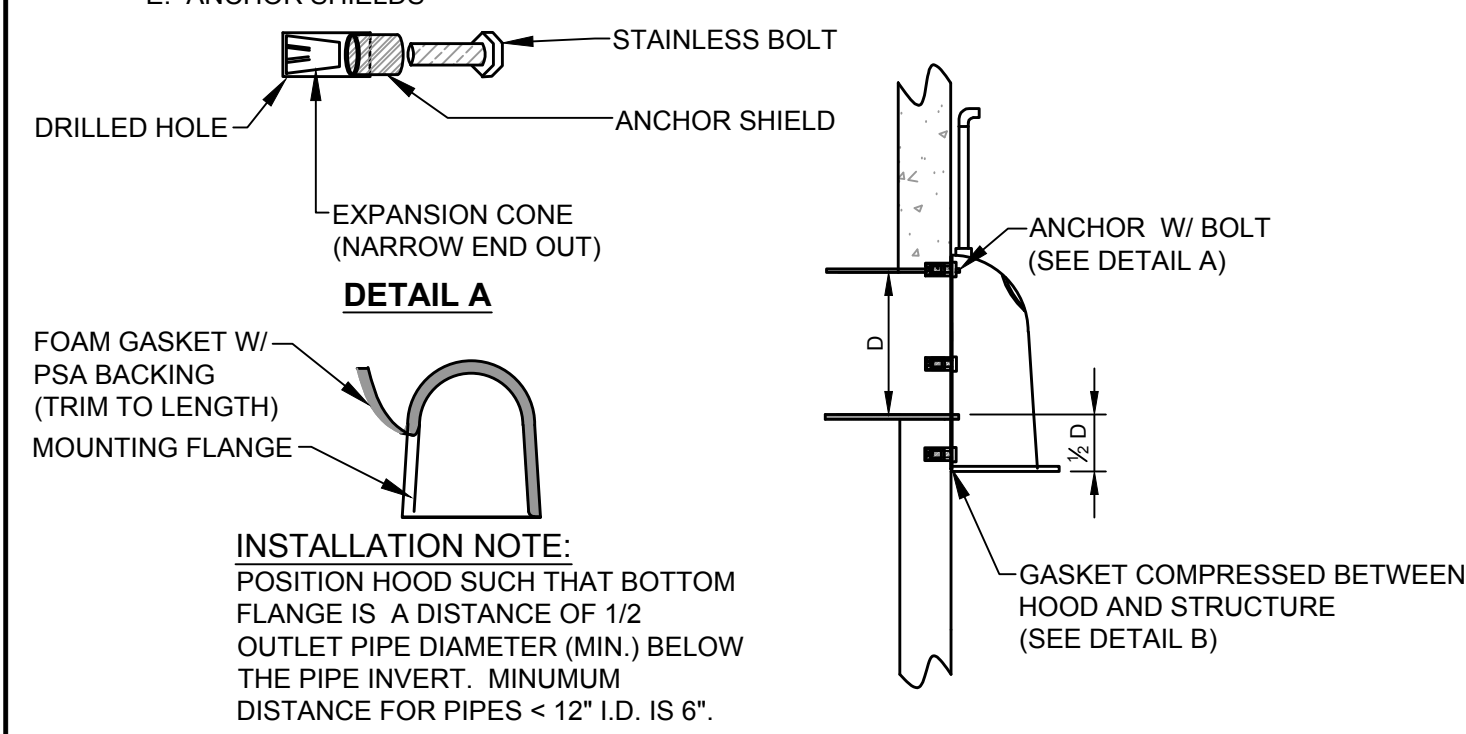


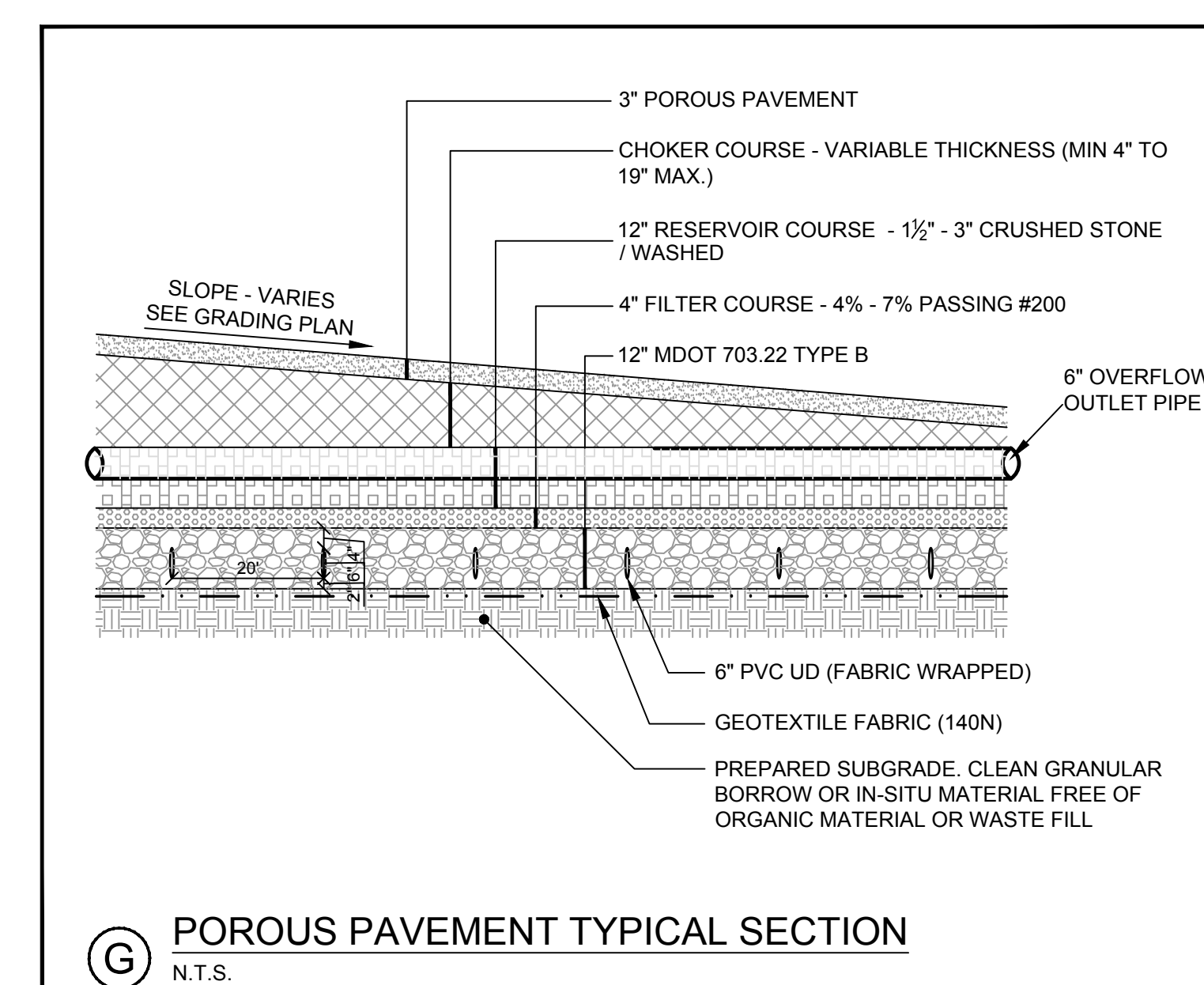
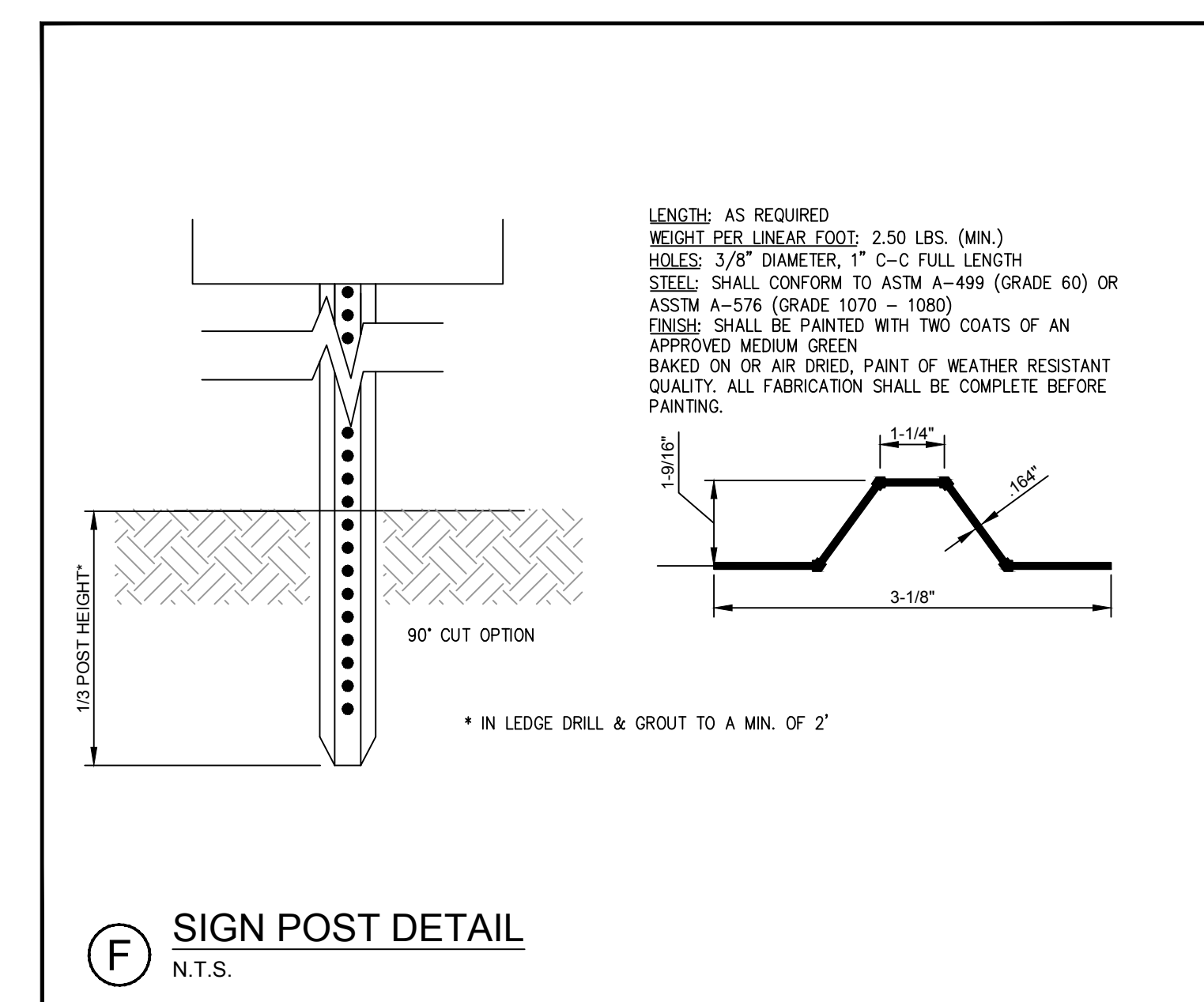
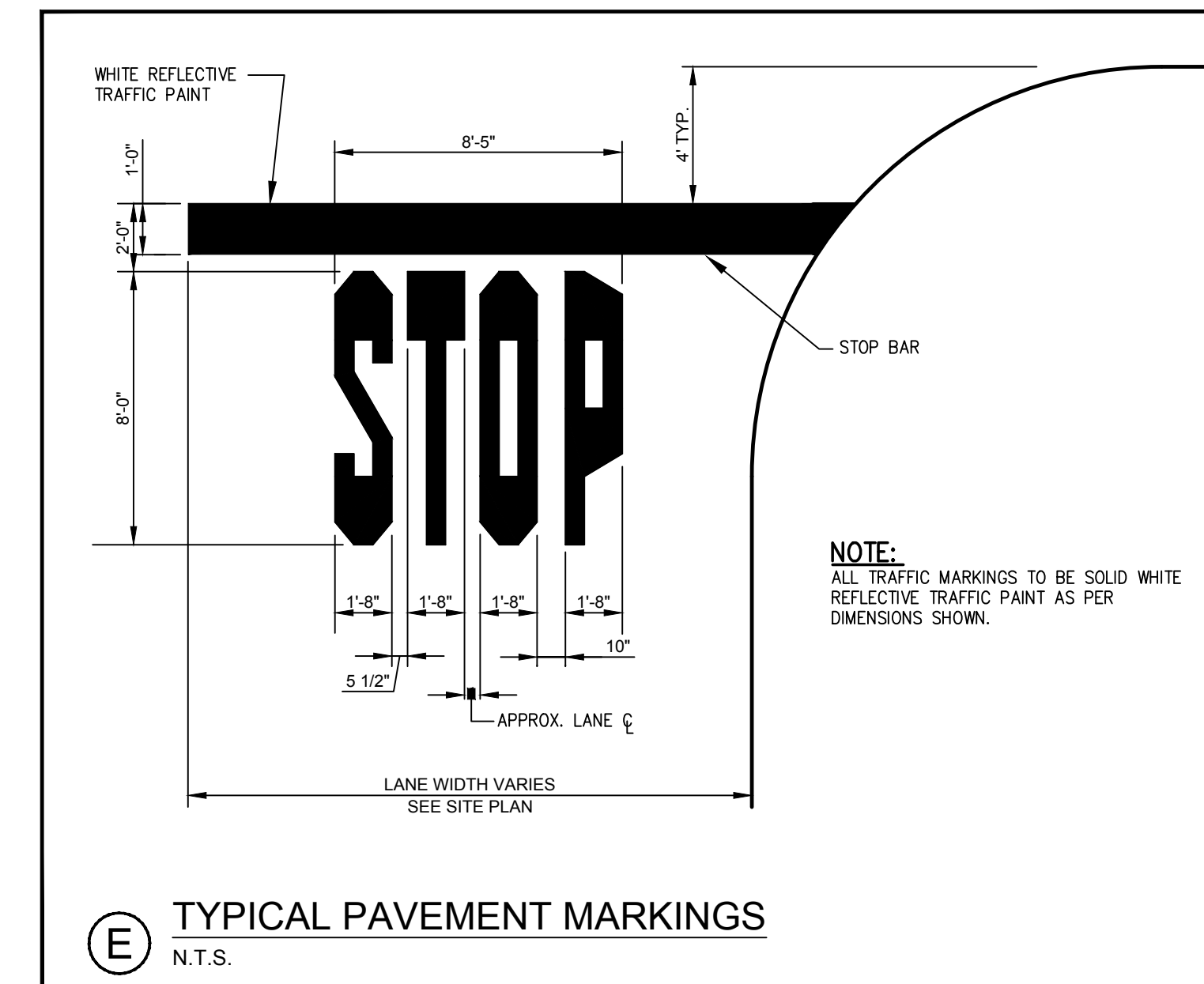
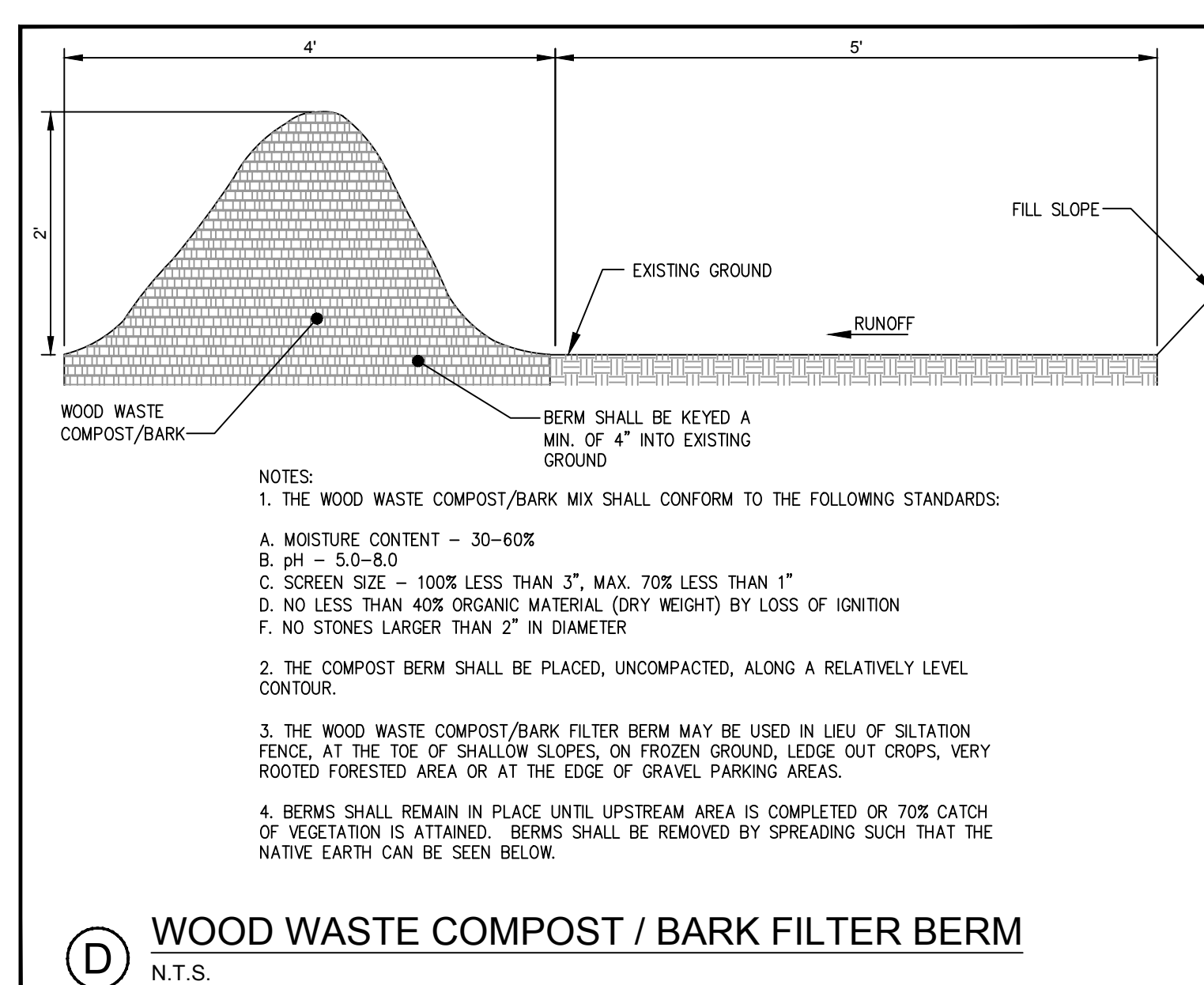
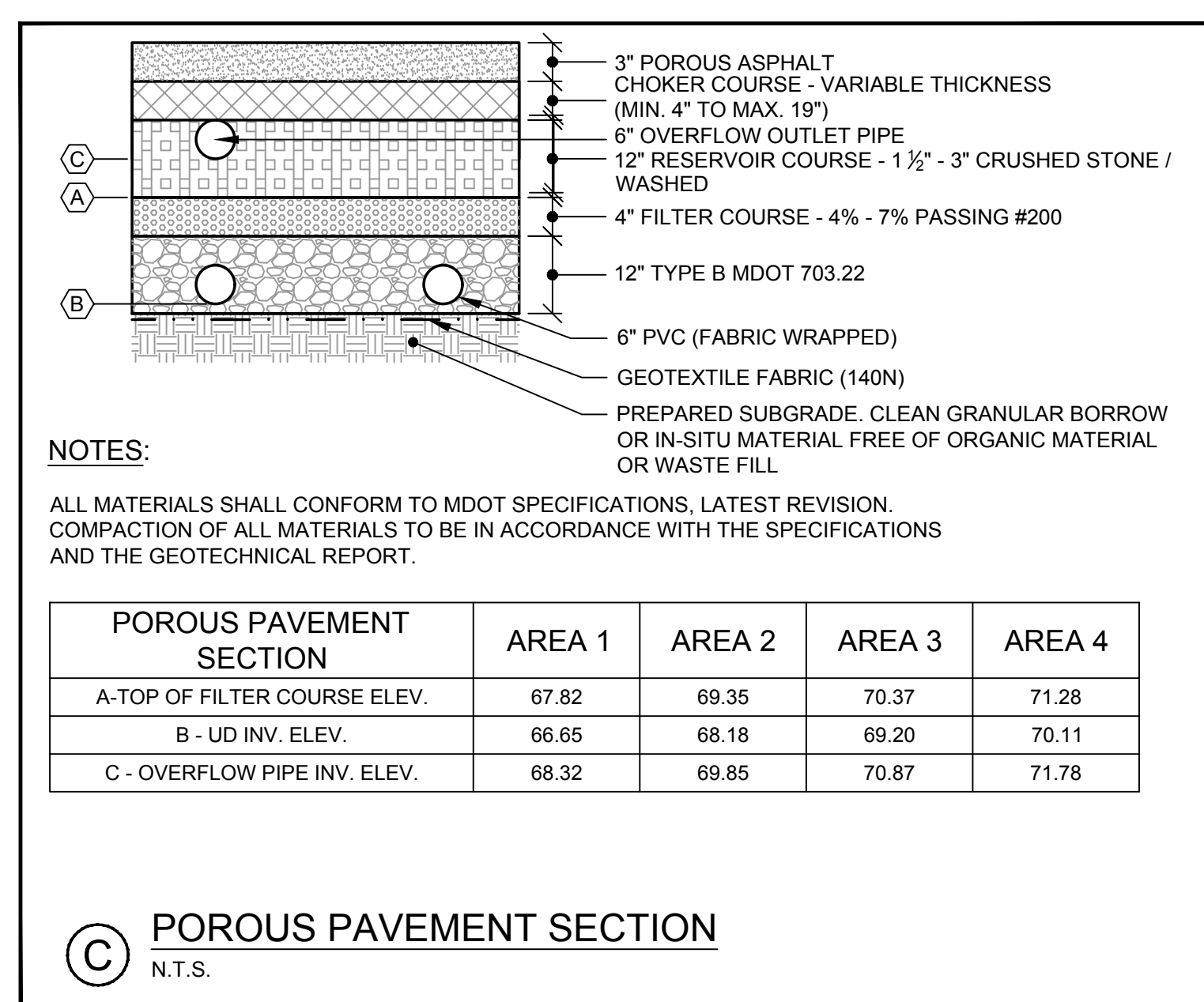
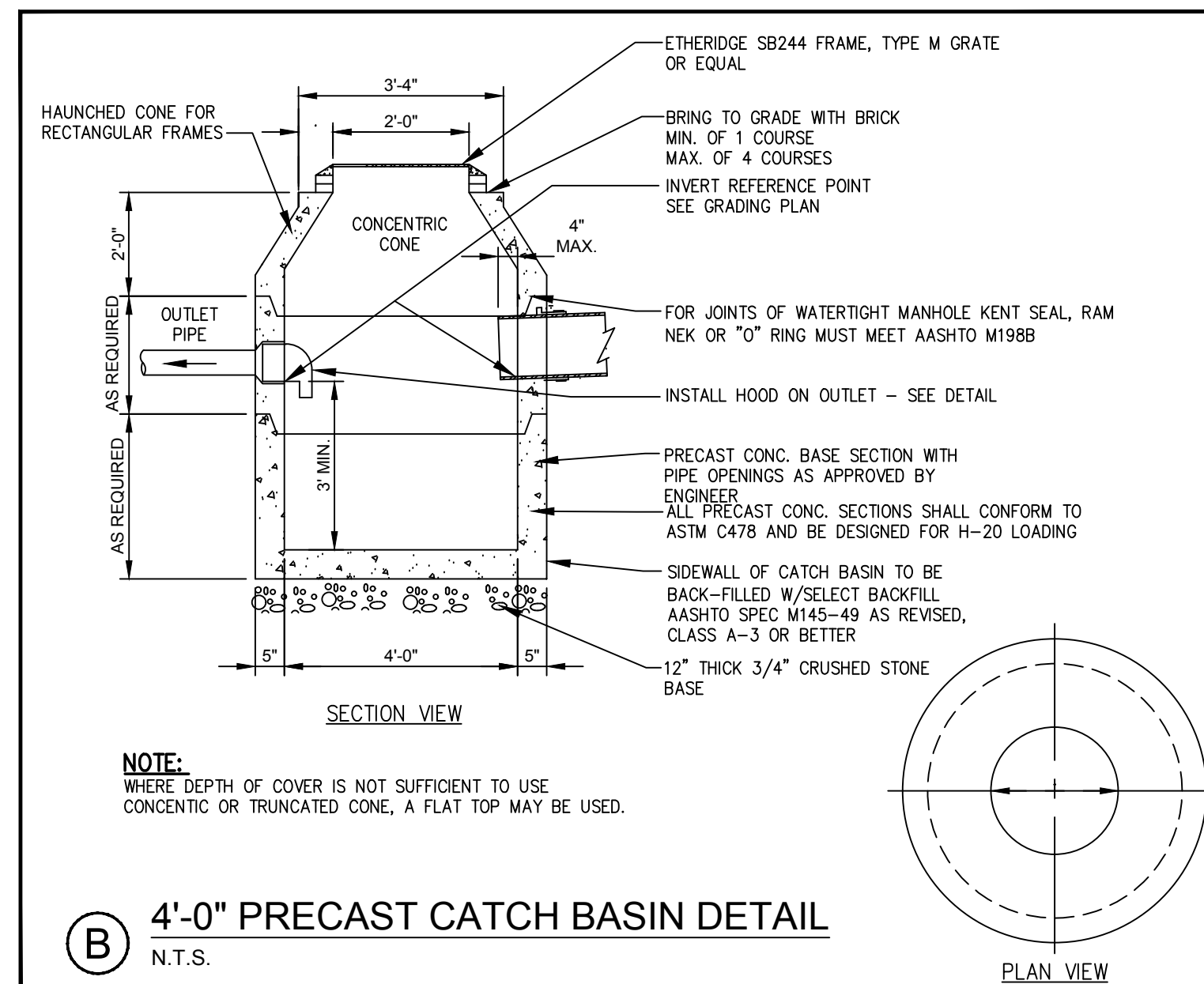
- NOTES:**
- ALL HOODS AND TRAPS FOR CATCH BASINS AND WATER QUALITY STRUCTURES SHALL BE AS MANUFACTURED BY BEST MANAGEMENT PRODUCTS, INC. TOLL FREE: (800) 504-8008 OR (888) 354-7585 WEB SITE: www.bmpinc.com OR PRE-APPROVED EQUAL.
  - ALL HOODS SHALL BE CONSTRUCTED OF A GLASS REINFORCED RESIN COMPOSITE WITH ISO GEL COAT EXTERIOR FINISH WITH A MINIMUM 0.125" LAMINATE THICKNESS.
  - ALL HOODS SHALL BE EQUIPPED WITH A WATERTIGHT ACCESS PORT, A MOUNTING FLANGE, & AN ANTI-SIPHON VENT AS DRAWN. (SEE CONFIGURATION DETAIL)
  - THE SIZE AND POSITION OF THE HOOD SHALL BE DETERMINED BY OUTLET PIPE SIZE IN ACCORDANCE WITH THE FOLLOWING TABLE:

STRUCTURE OUTLET HOLE SIZE	SNOUT SIZE
11.9" O.D. OR LESS	12 F or R
12.0"-17.9" O.D.	18 F or R
18.0"-23.9" O.D.	24 F or R
24.0"-29.9" O.D.	30 F or R
30.0"-47.9" O.D.	48 F
48.0"-95.9" O.D.	96 F

- THE BOTTOM OF THE HOOD SHALL EXTEND DOWNWARD A DISTANCE EQUAL TO 1/2 THE OUTLET PIPE DIAMETER WITH A MINIMUM DISTANCE OF 6" FOR PIPES <12" I.D.
- THE ANTI-SIPHON VENT SHALL EXTEND ABOVE HOOD BY MINIMUM OF 3" AND A MAXIMUM OF 24" ACCORDING TO STRUCTURE CONFIGURATION.
- THE SURFACE OF THE STRUCTURE WHERE THE HOOD IS MOUNTED SHALL BE FINISHED SMOOTH AND FREE OF LOOSE MATERIAL.
- THE HOOD SHALL BE SECURELY ATTACHED TO STRUCTURE WALL WITH 3/8" STAINLESS STEEL BOLTS AND OIL-RESISTANT GASKET AS SUPPLIED BY MANUFACTURER. (SEE INSTALLATION DETAIL)
- INSTALLATION INSTRUCTIONS SHALL BE FURNISHED WITH MANUFACTURER SUPPLIED INSTALLATION KIT, WHICH INCLUDES:
  - INSTALLATION INSTRUCTIONS
  - PVC ANTI-SIPHON VENT PIPE AND ADAPTER
  - OIL-RESISTANT CRUSHED CELL FOAM GASKET WITH PSA BACKING
  - 3/8" STAINLESS STEEL BOLTS
  - ANCHOR SHIELDS

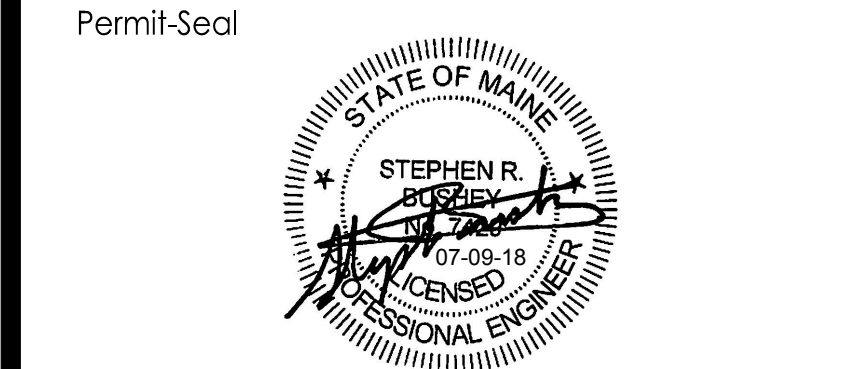


**(A) SNOUT OIL-WATER-DEBRIS SEPARATOR DETAIL**  
N.T.S.



Revision	By	Date
2	SRB	18.07.09
1	SRB	18.03.22

File Name:	PBF	SRB	SRB	18.05.22
	DWN.	CHKD.	DSGN.	DATE



Client/Project  
TRANSPORT LEASING CORP.  
ANDOVER, MA  
JOHNSON ROAD  
PROPERTY  
90 JOHNSON ROAD, PORTLAND, MAINE

Title  
**DETAILS**  
Project No. Scale  
210801617  
Sheet C-9.0