

CROSS SECTION C-C
 FINISHING DETAIL, THE SAME AS
 CROSS SECTION A-A (SEE NOTE)
 SCALE: 1/4" = 1'-0"

CROSS SECTION A-A
 SCALE: 1/4" = 1'-0"

CROSS SECTION B-B
 FINISHING DETAIL, THE SAME AS
 CROSS SECTION A-A (SEE NOTE)
 SCALE: 1/4" = 1'-0"

TYPICAL RAFTER TRIM DETAIL

MAIN FLOOR

PRODUCT CODE	SIZE	HINGE DIRECTION	COUNT
32x80 9 LITE	2'-0"	R	1
32x80 9 LITE	2'-0"	R	1
9 SECTIONAL	9'-0"	NA	1
CN298	3'-4 13/16" x 3'-4 13/16"	NN	1
TU692	1'-9" x 6'-6"	NA	2
TU292-2	5'-1 5/16" x 5'-4"	NN	1
TU292-3	5'-9" x 5'-4"	NNN	2
TU292	2'-9" x 5'-4"	N	1
A 21	2'-0" x 2'-0"	N	1
24x80 PANTRY	2'-0"	LR	1
24x80 PANTRY	2'-0"	LR	1
28x80 colonial	2'-4"	R	1
30x80 colonial	2'-6"	L	1
32x80 colonial	2'-8"	L	1
48x80 colonial DOUBLE	4'-0"	LR	1
60x80 colonial w/ side lites	5'-0"	NA	1
60x80 french	5'-0"	LR	1
12' GARAGE sectional	12'-0"	N	1
6080 RUG	5'-0"	NN	1

SECOND FLOOR

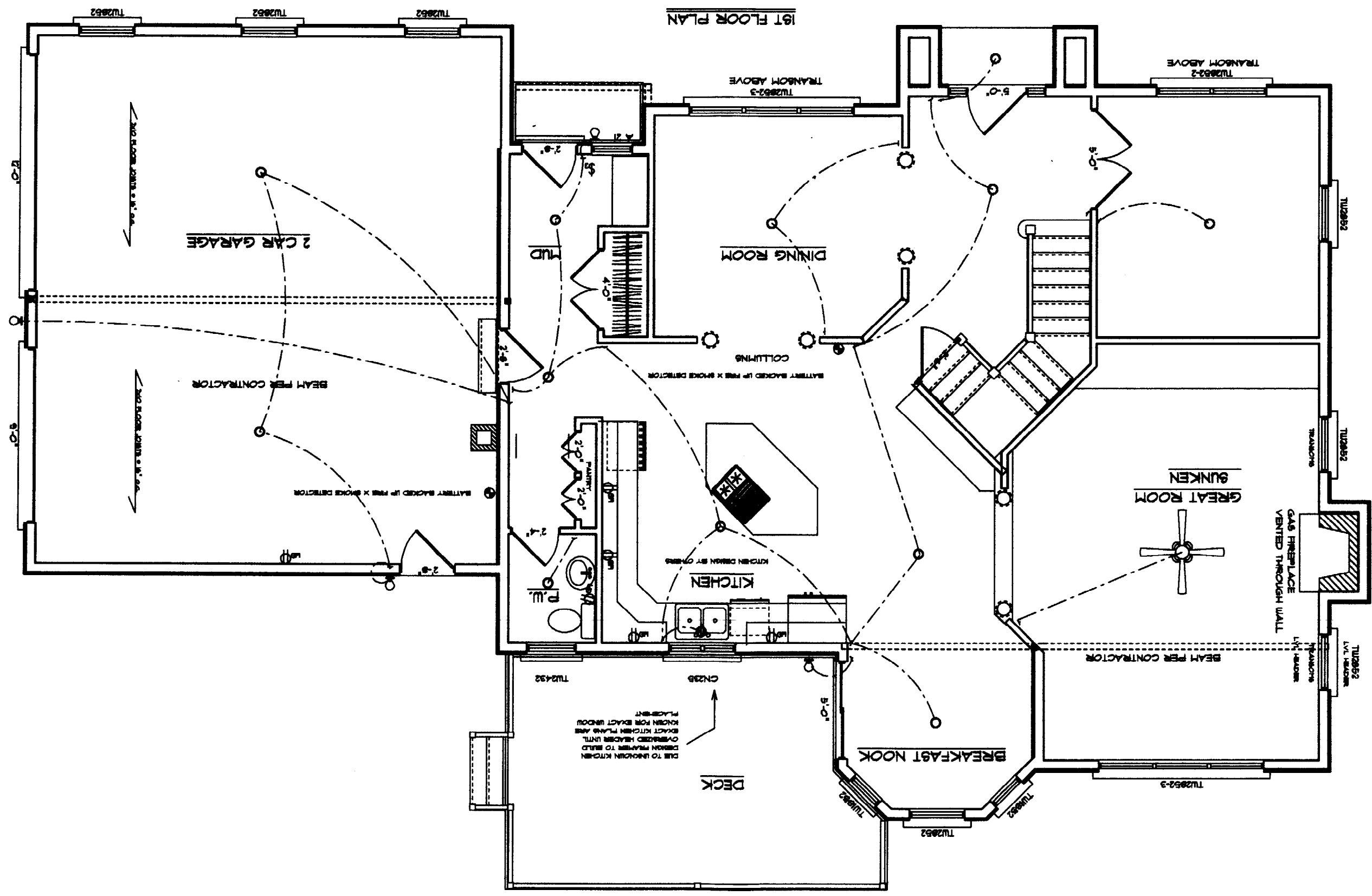
PRODUCT CODE	SIZE	HINGE DIRECTION	EGRESS	COUNT
C335	5'-11" x 3'-4 13/16"	NNN	TEMPERED	1
APW 506	5'-0" x 6'-0"	N		1
TU692	1'-9" x 5'-4"	N		2
TU2046	2'-1" x 4'-8"	N		2
TU2422	2'-9" x 2'-4"	N	TEMPERED	1
TU292-2	5'-1 5/16" x 5'-4"	NN	EGRESS	2
TU292	2'-9" x 5'-4"	N	EGRESS	9
18x80 colonial	1'-6"	R		1
28x80 colonial	2'-4"	R		1
28x80 colonial # 1	2'-4"	R		1
30x80 colonial	2'-6"	L		1
30x80 colonial	2'-6"	R		1
30x80 colonial # 1	2'-6"	L		1
30x80 colonial # 1	2'-6"	R		4
32x80 colonial	2'-8"	L		1
32x80 colonial	2'-8"	R		1
48x80 colonial DOUBLE	4'-0"	LR		2
48x80 colonial DOUBLE	4'-0"	LR		2
60x80 colonial DOUBLE	5'-0"	LR		1

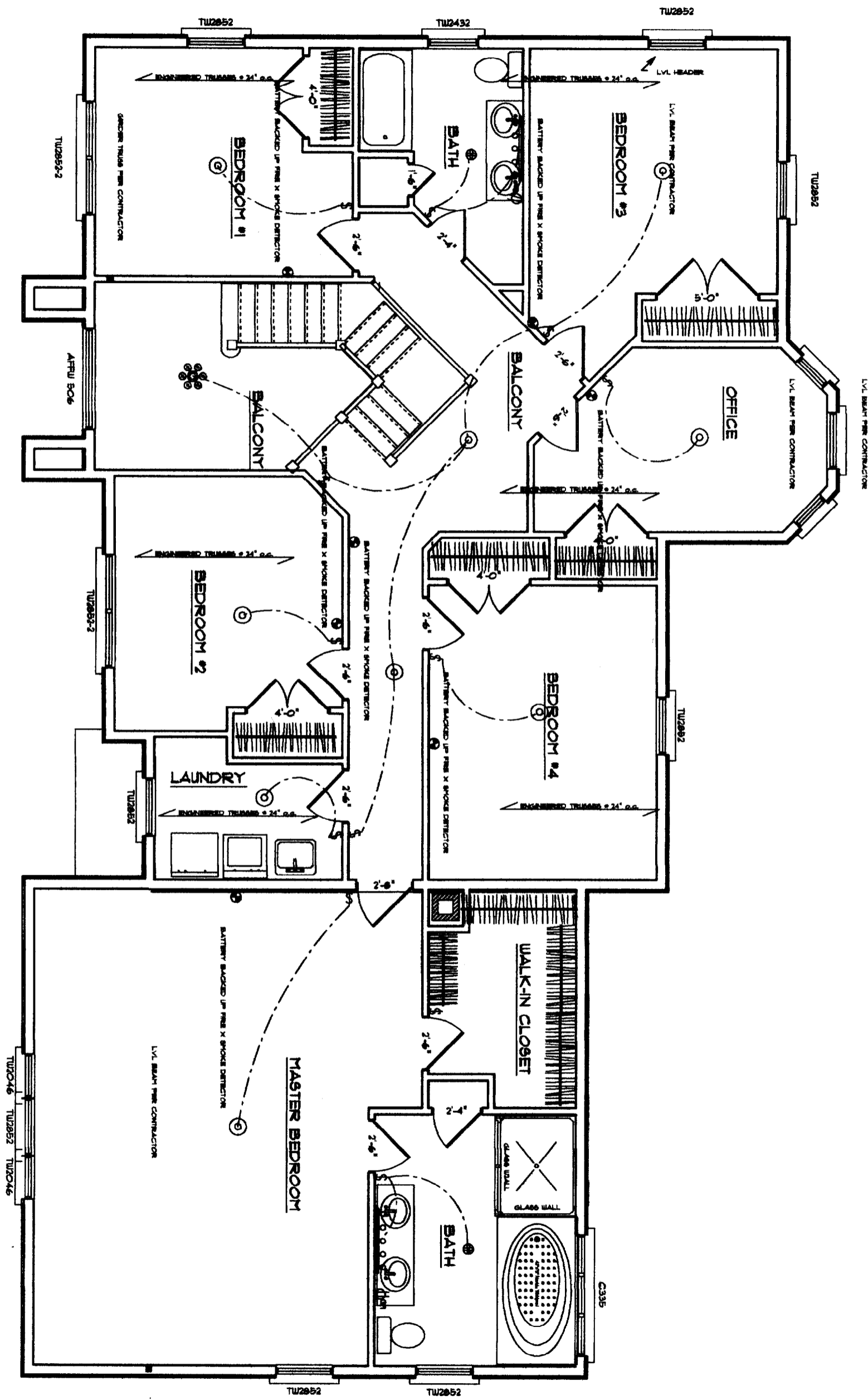
BASEMENT FLOOR

PRODUCT CODE	SIZE	HINGE DIRECTION	REVERSED	COUNT
32x80 9 LITE	2'-0"	R	NO	1
TU29210	2'-9" x 3'-0"	N	NA	1
TU2922	2'-9" x 5'-4"	N	NA	3
30x80 colonial	2'-6"	L	YES	1

NOTE: ALL ELECTRICAL TO BE INSTALLED TO LOCAL CODE. ELECTRICAL PLAN MAY BE SUBJECT TO CHANGE.

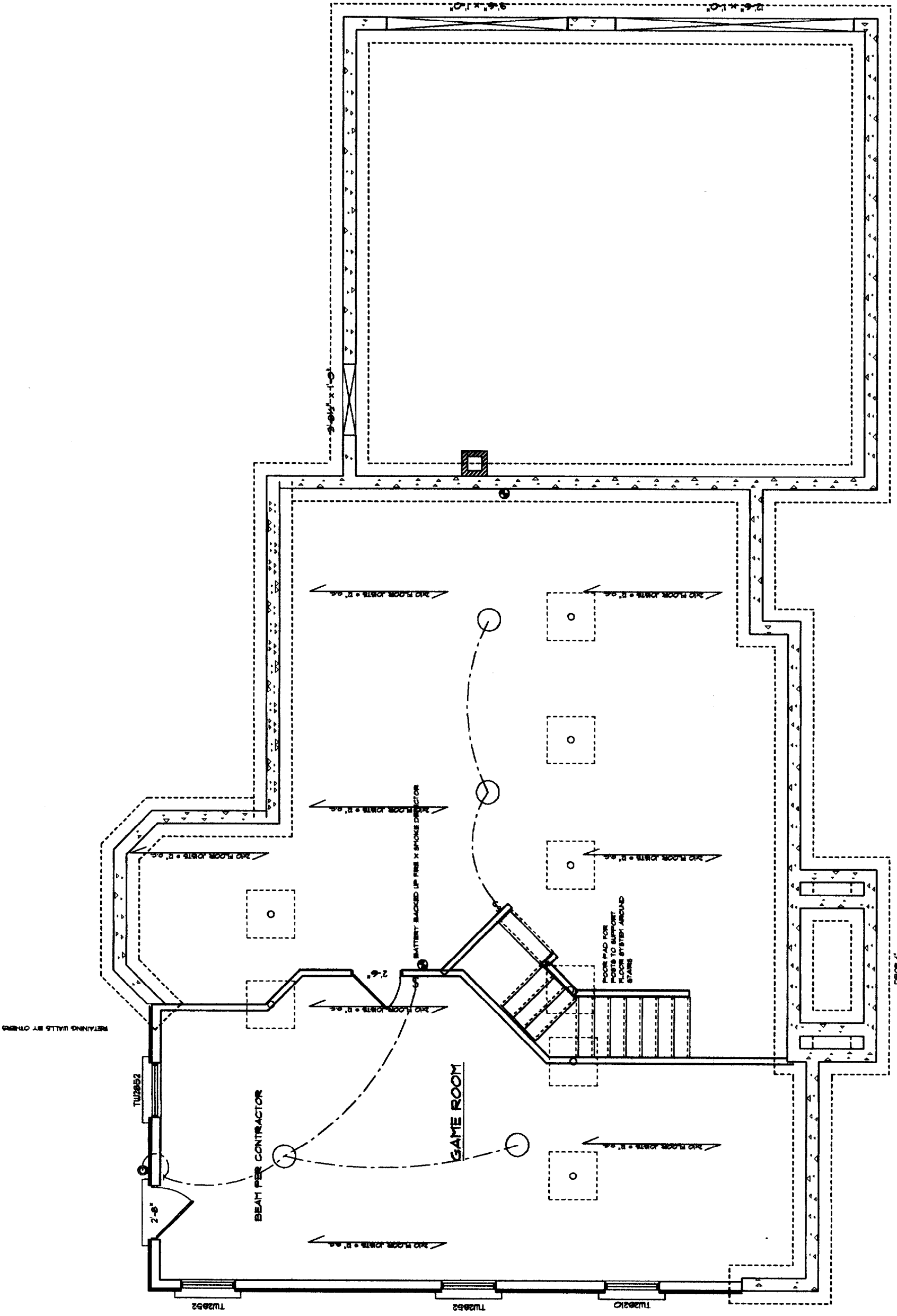
1ST FLOOR PLAN





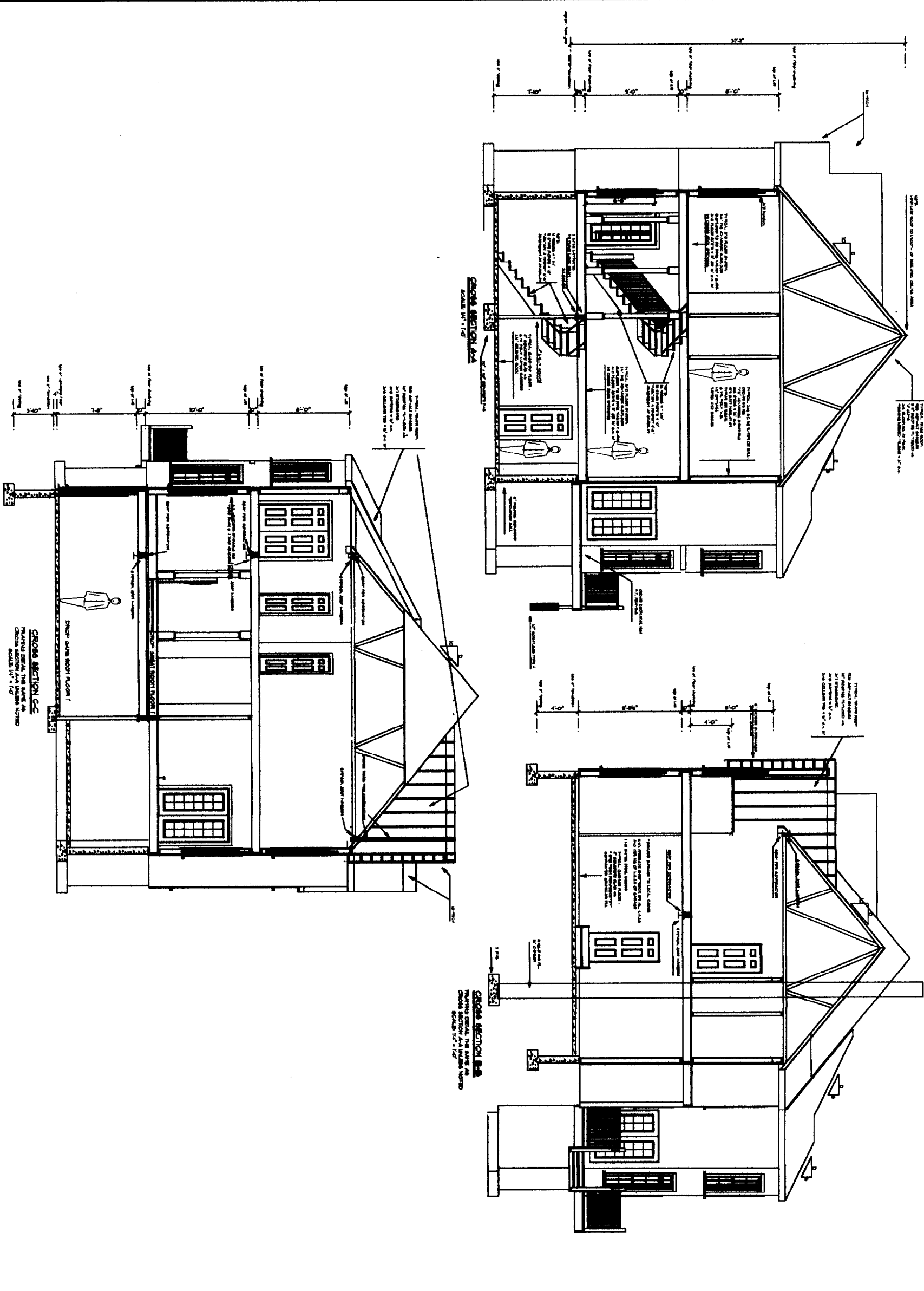
2ND FLOOR PLAN

NOTE: ALL ELECTRICAL TO BE INSTALLED TO LOCAL CODE. ELECTRICAL PLAN MAY BE SUBJECT TO CHANGE.



FOUNDATION PLAN

NOTE: ALL ELECTRICAL TO BE INSTALLED TO LOCAL CODE. ELECTRICAL PLAN MAY BE SUBJECT TO CHANGE



REVISIONS	
DATE	
SCALE	AS NOTED
DRAWN	
PLC	
SHEET 1 OF 3	

PROJECT NAME:
DAWSON RESIDENCE

THESE PLANS AND SPECIFICATIONS HAVE NOT BEEN PREPARED BY A REGISTERED ARCHITECT OR ENGINEER. NEEL, PETER PALANZA AND PALANZA DESIGN ARE NOT ENGAGED IN THE PRACTICE OF ARCHITECTURE OR ENGINEERING AND THEY HOLD THEMSELVES OUT AS SUCH. THESE PLANS ARE PROVIDED AS A SERVICE AND IN NO WAY CONSTITUTE A GUARANTEE TO THE ACCURACY AND SUFFICIENCY OF THE INFORMATION PROVIDED. ALL INFORMATION AND SPECIFICATIONS TO BE REVIEWED FOR ACCURACY AND STRUCTURAL INTEGRITY BY A REGISTERED ARCHITECT OR ENGINEER AND CONTRACTOR BEFORE ACTING. CONSTRUCTION CONTRACT SPECIFICATIONS OVERRULE THESE PLANS.

MAIN FLOOR

PRODUCT CODE	SIZE	HINGE DIRECTION	COUNT
32x80 9 LITE	2'-8"	R	1
32x80 9 LITE	2'-8"	R	1
9' SECTIONAL	9'-0"	NA	1
CN235	3'-4 1/2" x 3'-4 13/16"	NN	1
TU2832	1'-8" x 6'-6"	NA	2
TU2832-2	5'-1 9/16" x 9'-4"	NN	1
TU2832-3	8'-8" x 9'-4"	NNN	2
TU2832	2'-9" x 9'-4"	N	1
A 21	2'-0" x 2'-0"	N	1
24x80 PANTRY	2'-0"	LR	1
24x80 PANTRY	2'-0"	LR	1
28x80 colonial	2'-4"	R	1
30x80 colonial	2'-6"	L	1
30x80 colonial	2'-6"	L	1
48x80 colonial DOUBLE	4'-0"	LR	1
60x80 colonial w/ sidelites	8'-0"	NA	1
60x80 french	8'-0"	LR	1
12' GARAGE SECTIONAL	12'-0"	N	1
6080 FUG	9'-0"	NN	1

SECOND FLOOR

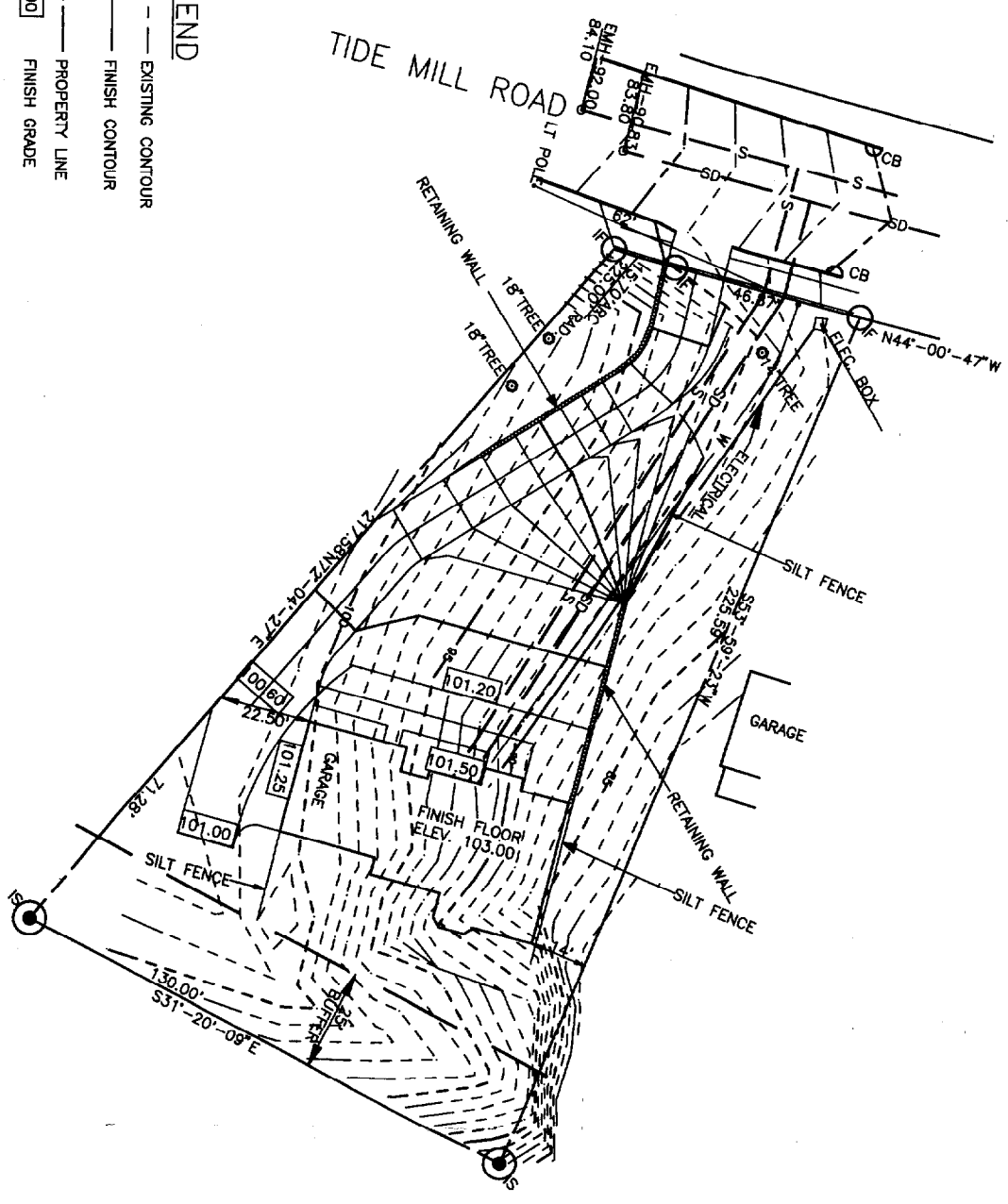
PRODUCT CODE	SIZE	HINGE DIRECTION	EGRESS	COUNT
C335	9'-11" x 3'-4 13/16"	NNN	TEMPERED	1
APW 506	8'-0" x 6'-0"	N		1
TU2832	1'-8" x 9'-4"	N		2
TU2046	2'-1" x 4'-8"	N		2
TU2432	2'-8" x 3'-4"	N	TEMPERED	1
TU2832-2	9'-1 9/16" x 9'-4"	NN	EGRESS	2
TU2832	2'-9" x 9'-4"	N	EGRESS	9
18x80 colonial	1'-6"	R		1
28x80 colonial	2'-4"	R		1
28x80 colonial # 1	2'-4"	R		1
30x80 colonial	2'-6"	L		1
30x80 colonial	2'-6"	R		1
30x80 colonial # 1	2'-6"	L		1
30x80 colonial # 1	2'-6"	R		4
32x80 colonial	2'-6"	L		1
32x80 colonial	2'-8"	R		1
48x80 colonial DOUBLE	4'-0"	LR		2
48x80 colonial DOUBLE	4'-0"	LR		2
48x80 colonial DOUBLE	4'-0"	LR		2
50x80 colonial DOUBLE	5'-0"	LR		1

BASEMENT FLOOR

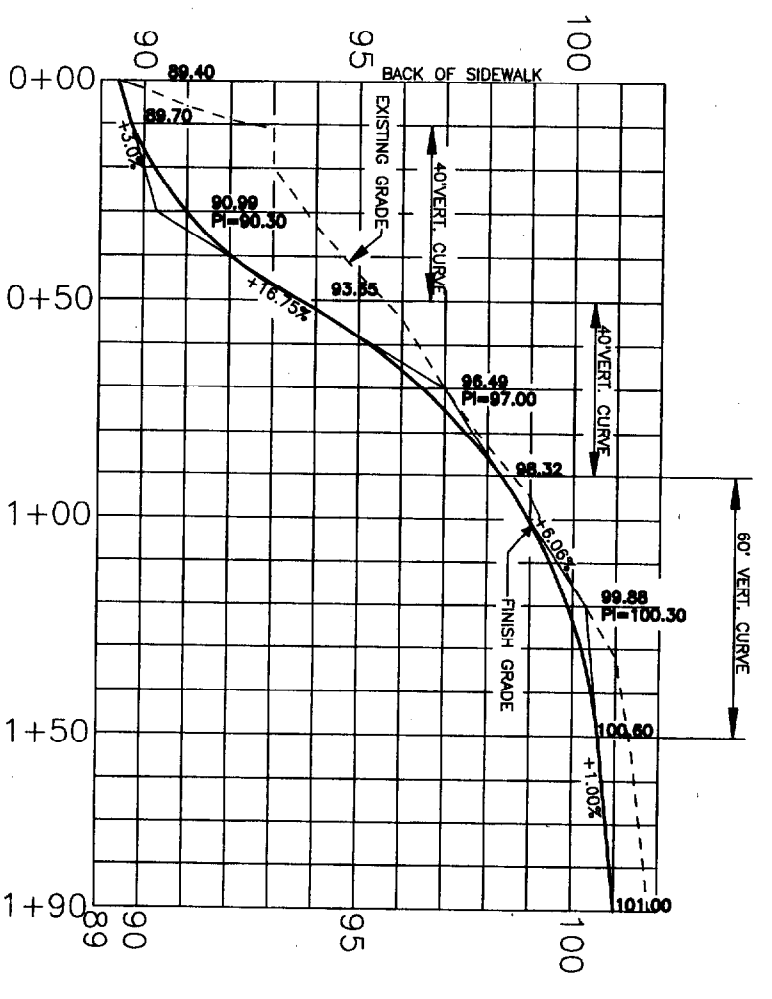
PRODUCT CODE	SIZE	HINGE DIRECTION	REVERSED	COUNT
32x80 9 LITE	2'-8"	R	NO	1
TU2821C	2'-9" x 3'-0"	N	NA	1
TU2832	2'-9" x 9'-4"	N	NA	3
30x80 colonial	2'-6"	L	YES	1

BENCH MARK
 MANHOLE INVERT ELEVATIONS ARE AT
 WATER LEVEL ACCORDING TO RECORD
 DRAWING 902/7-A.

- NOTES:**
1. LOCUS LOT-LOT 5, TIDE MILL ROAD, 20,739 SF.
 2. ZONING -R-2 ZONE WITH THE FOLLOWING SETBACKS:
 MINIMUM FRONTAGE 50'
 FRONT YARD 25'
 REAR YARD 15'
 SIDE YARD-2 STORY HOUSE-14'.
 MINIMUM LOT WIDTH-80'
 3. ELEVATIONS BASED ON MEAN SEA LEVEL PER RECORD DRAWING 902/7-A



- LEGEND**
- EXISTING CONTOUR
 - FINISH CONTOUR
 - PROPERTY LINE
 - 01.00 FINISH GRADE
 - IF IRON FOUND
 - IS IRON SET
 - S — S SANITARY SEWER
 - SD — SD STORM SEWER
 - WATER LINE
 - UNDERGROUND ELECTRICAL
 - EXIST MANHOLE RIM ELEVATION
 - INVERT ELEVATION



Herbert P. Gray

SITE PLAN	
CLOUTIER CONSTRUCTION	
TIDE MILL ROAD	
PORTLAND, MAINE	
CLOUTIER CONSTRUCTION	
HERBERT P. GRAY	
111 SIMONS ROAD, SOUTH PORTLAND, MAINE 04106	
SCALE: 1"=20'	DWG. NO. 1
DATE: 10/24/02	
DRAWN BY: HPG	
CHECKED BY: HPG	