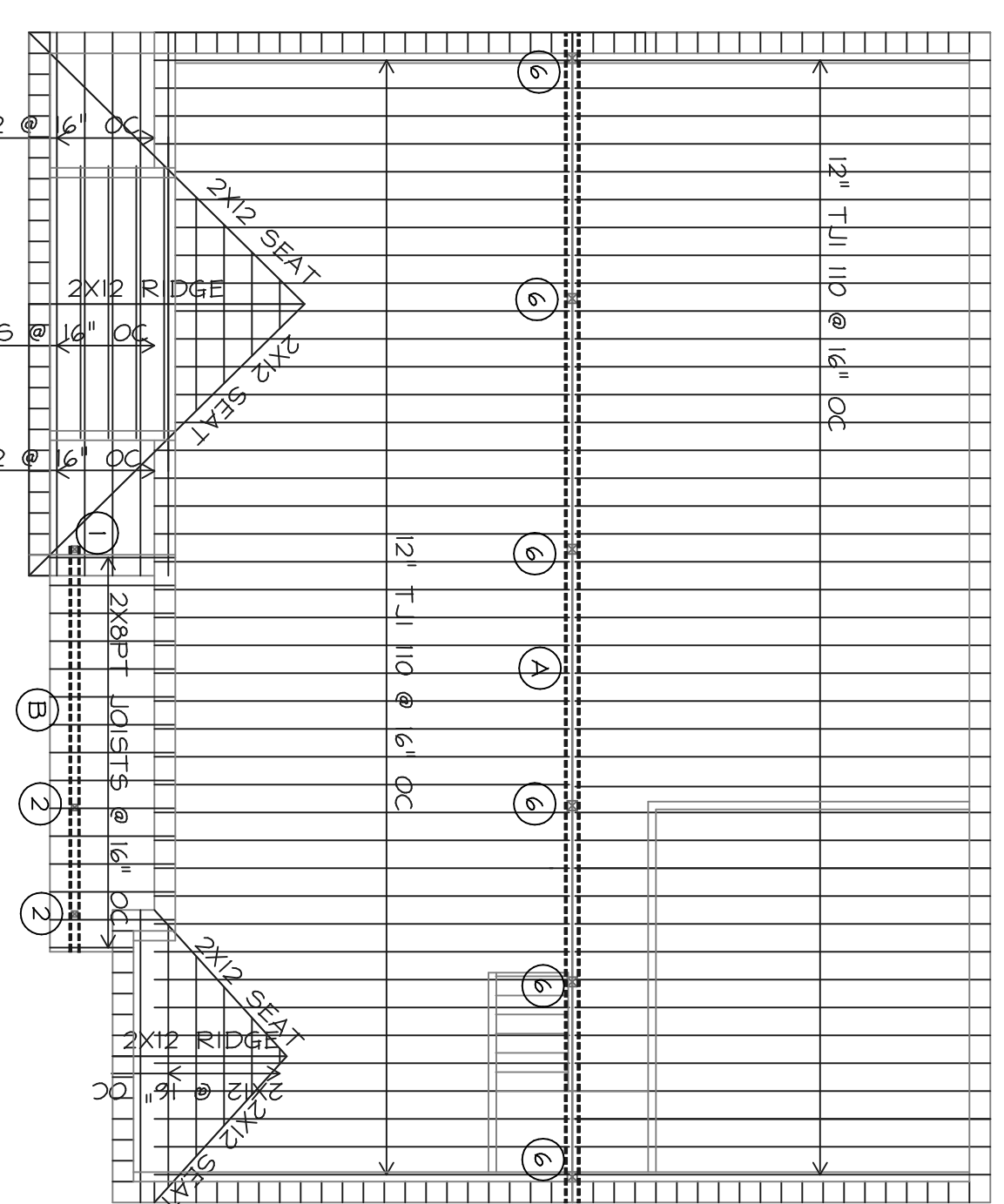
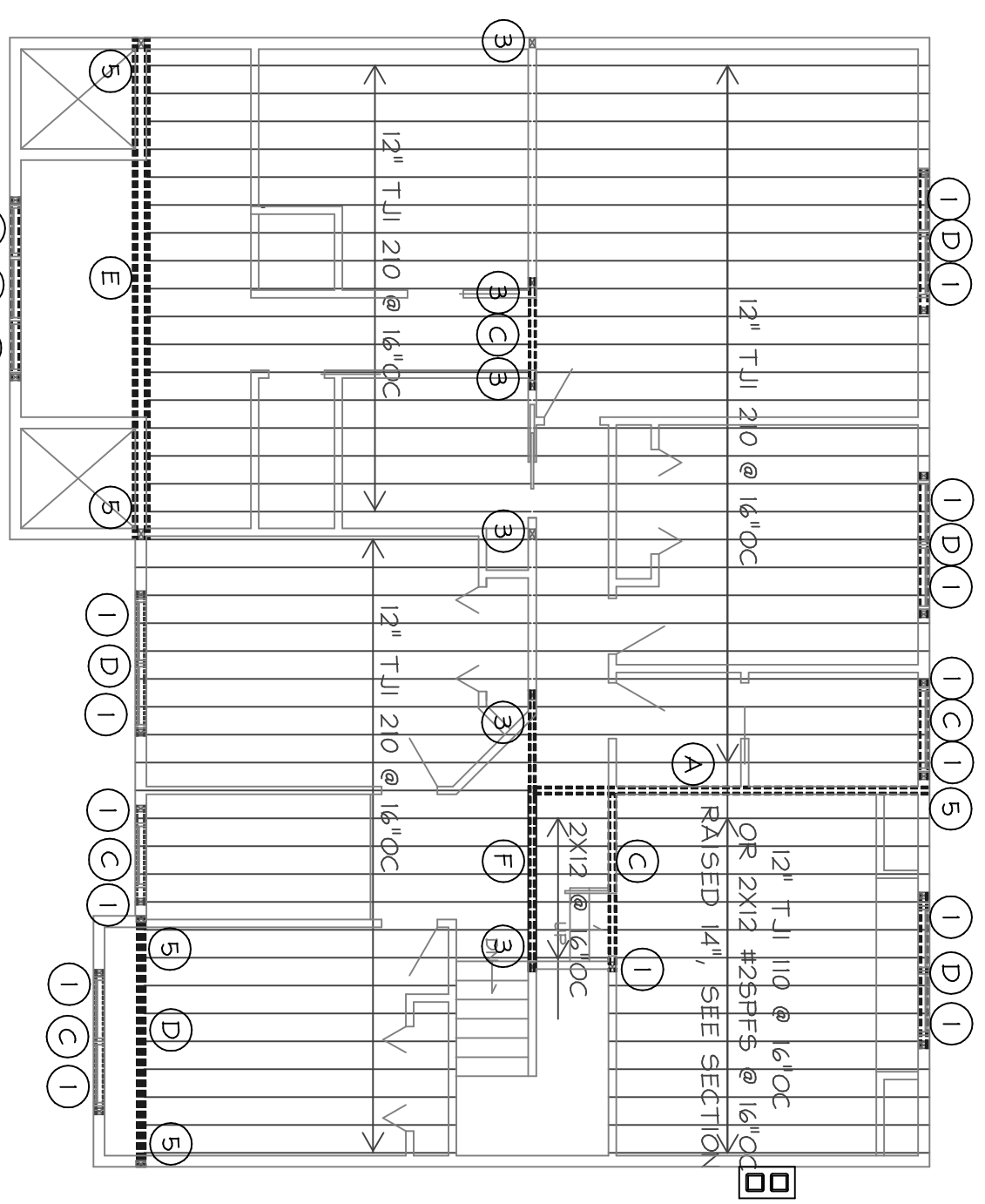


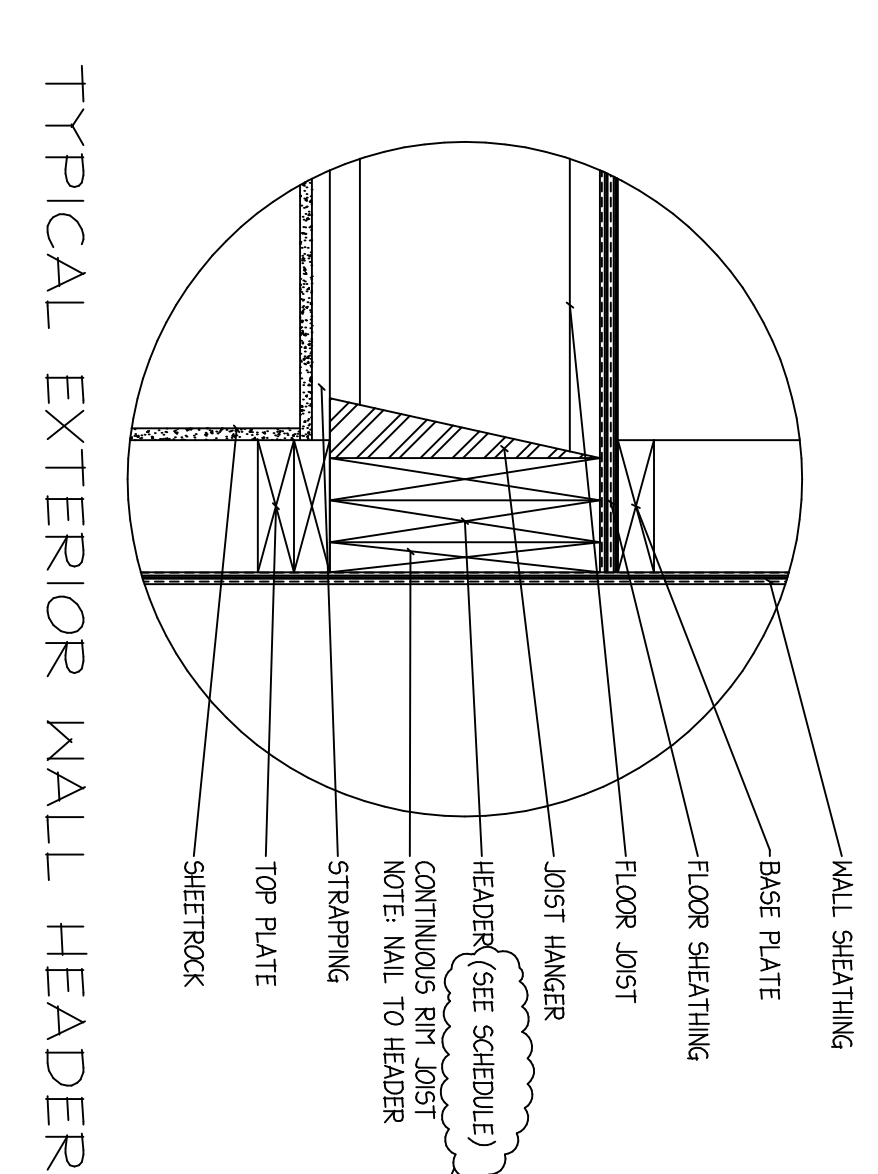
- ATTIC FLOOR NOTES:
- 1) ATTIC FLOOR LIVE LOAD: 30psf
 - 2) ATTIC FLOOR DEAD LOAD: 10psf
 - 3) MINIMUM FLOOR SHEATHING: 5/8" T&G APA 40/20 STRUCTURAL RATED
 - 4) WALL SHEATHING WITH #10 @ 8" OC EDGES AND 12" FIELD
 - 5) EXTERIOR WALLS SHALL BE 2X6 @ 16" ON CENTER
 - 6) BEARING WALLS (LOCATED BELOW, SHOWN SHADED) SHALL BE 2X6 @ 16" OC
 - 7) MINIMUM EXTERIOR & BEARING WALL SHEATHING SHALL BE 1/2" CDX APA 24/6 RATED
 - 8) WALL SHEATHING WITH #8 @ 8" OC EDGES AND 12" OC FIELD
 - 9) USE USFP TRIPLEX JOIST HANGERS AT ALL T&G BEARING CONNECTIONS
 - 10) USE USFP TRIPLEX JOIST HANGERS AT ALL T&G BEARING CONNECTIONS
 - 11) USE USFP TRIPLEX JOIST HANGERS AT ALL T&G BEARING CONNECTIONS
 - 12) USE APPROPRIATE USFP D BASE AT ALL COLUMNS WHICH SUPPORT A BEAM 6" OR LONGER

- ROOF FRAMING NOTES:
- 1) ROOF DEAD LOAD: 10psf
 - 2) ROOF SNOW LOAD: 40psf
 - 3) MINIMUM ROOF SHEATHING: 5/8" T&G APA 40/20 STRUCTURAL RATED
 - 4) WALL SHEATHING WITH #10 @ 8" OC EDGES AND 12" FIELD
 - 5) USE USFP TRIPLEX JOIST HANGERS AT ALL T&G BEARING CONNECTIONS
 - 6) USE USFP TRIPLEX JOIST HANGERS AT ALL T&G BEARING CONNECTIONS
 - 7) USE USFP TRIPLEX JOIST HANGERS AT ALL T&G BEARING CONNECTIONS
 - 8) USE USFP TRIPLEX JOIST HANGERS AT ALL T&G BEARING CONNECTIONS
 - 9) USE USFP TRIPLEX JOIST HANGERS AT ALL T&G BEARING CONNECTIONS
 - 10) USE USFP TRIPLEX JOIST HANGERS AT ALL T&G BEARING CONNECTIONS
 - 11) USE USFP TRIPLEX JOIST HANGERS AT ALL T&G BEARING CONNECTIONS
 - 12) USE USFP TRIPLEX JOIST HANGERS AT ALL T&G BEARING CONNECTIONS
 - 13) USE USFP TRIPLEX JOIST HANGERS AT ALL T&G BEARING CONNECTIONS
 - 14) USE USFP TRIPLEX JOIST HANGERS AT ALL T&G BEARING CONNECTIONS

- ROOF FRAMING NOTES:
- 1) ROOF DEAD LOAD: 10psf
 - 2) ROOF SNOW LOAD: 40psf
 - 3) MINIMUM ROOF SHEATHING: 5/8" T&G APA 40/20 STRUCTURAL RATED
 - 4) WALL SHEATHING WITH #10 @ 8" OC EDGES AND 12" FIELD
 - 5) USE USFP TRIPLEX JOIST HANGERS AT ALL T&G BEARING CONNECTIONS
 - 6) USE USFP TRIPLEX JOIST HANGERS AT ALL T&G BEARING CONNECTIONS
 - 7) USE USFP TRIPLEX JOIST HANGERS AT ALL T&G BEARING CONNECTIONS
 - 8) USE USFP TRIPLEX JOIST HANGERS AT ALL T&G BEARING CONNECTIONS
 - 9) USE USFP TRIPLEX JOIST HANGERS AT ALL T&G BEARING CONNECTIONS
 - 10) USE USFP TRIPLEX JOIST HANGERS AT ALL T&G BEARING CONNECTIONS
 - 11) USE USFP TRIPLEX JOIST HANGERS AT ALL T&G BEARING CONNECTIONS
 - 12) USE USFP TRIPLEX JOIST HANGERS AT ALL T&G BEARING CONNECTIONS
 - 13) USE USFP TRIPLEX JOIST HANGERS AT ALL T&G BEARING CONNECTIONS
 - 14) USE USFP TRIPLEX JOIST HANGERS AT ALL T&G BEARING CONNECTIONS



- (A) DOUBLE 1-3/4" X 11-7/8" LVL
- (B) TRIPLE 2X10 PT
- (C) DOUBLE 2X12 #25PFS
- (D) DOUBLE 1-3/4" X 11-1/4" LVL
- (E) DOUBLE 3-1/2" X 18" LVL
- (F) TRIPLE 1-3/4" X 11-1/4" LVL
- (G) SINGLE 5-1/2"X18"
- (H) W10X26 36ksi STEEL BEAM
- (J) DOUBLE 2X8 PT
- (K) 3-1/2" X 14" LVL
- (L) TRIPLE 2X12 PT
- (1) DOUBLE STUD COLUMN
- (2) 4X4 PT COLUMN
- (3) TRIPLE STUD COLUMN
- (4) 3-1/2" X 3-1/2" PARALLAM COLUMN
- (5) 3-1/2" X 5-1/2" PARALLAM COLUMN
- (6) 5-1/2" X 5-1/2" PARALLAM COLUMN
- (7) 3-1/2" CONCRETE FILLED LALLY COLUMN - MINIMUM 0.226" WALL THICKNESS STANDARD PIPE COLUMN FILLED WITH 3000#91 CONCRETE



ATTIC FLOOR FRAMING PLAN

ROOF FRAMING PLAN

SECOND FLOOR FRAMING PLAN

TYPICAL EXTERIOR WALL HEADER

101 & HAMILTON ARCHITECTS, INC.
 600 MAIN STREET
 PORTLAND, ME 04101
 (207) 324-9897

PHILIPPO RESIDENCE
 TIDE MILL ROAD
 PORTLAND, MAINE

TITLE: STRUCTURAL
 Scale: 1/8"=1'-0"
 Date: 03/16/06
 Checked: MEH
 Date: 03/16/06

REV 1 7/24/06

SHEET 815