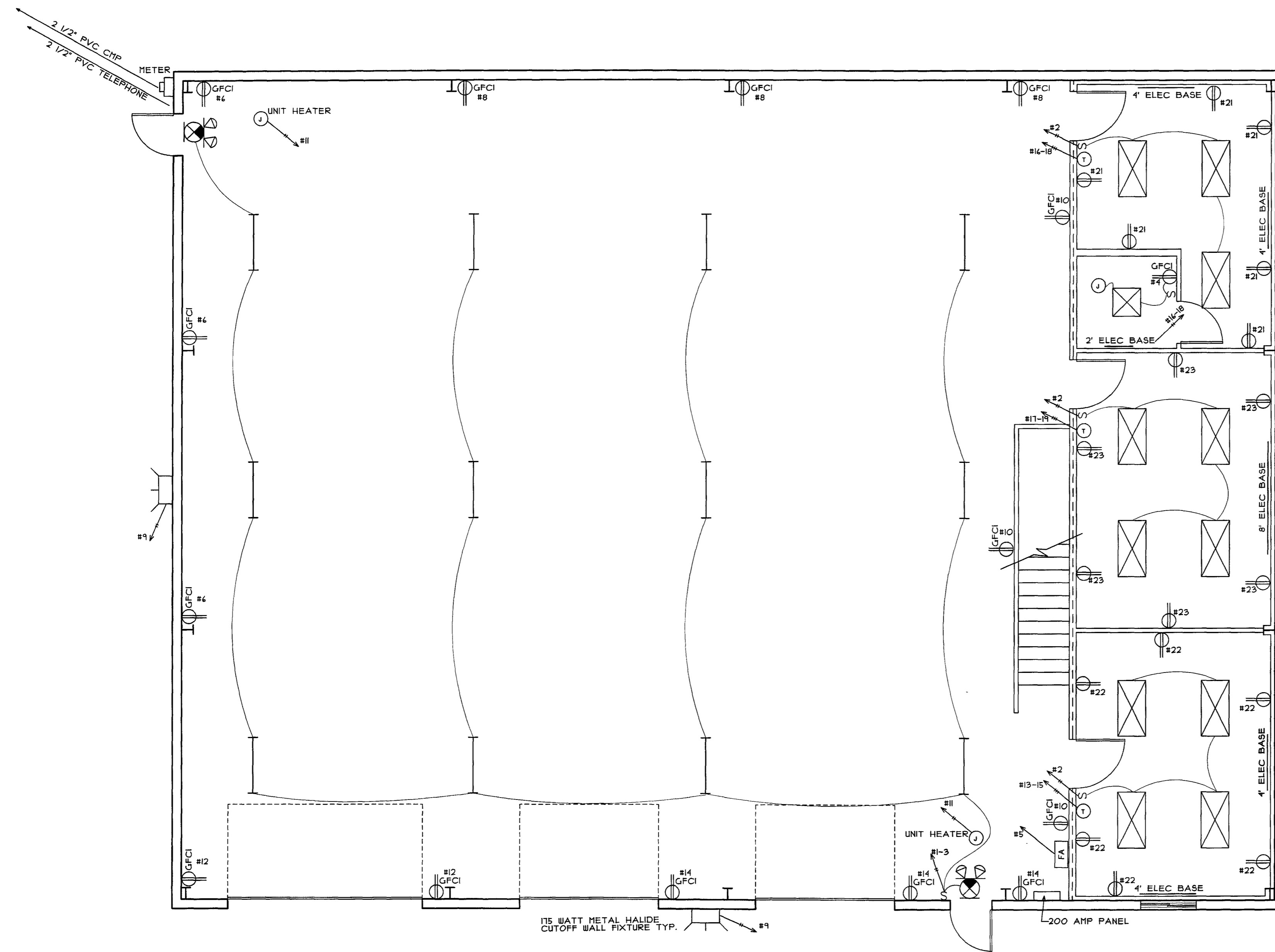
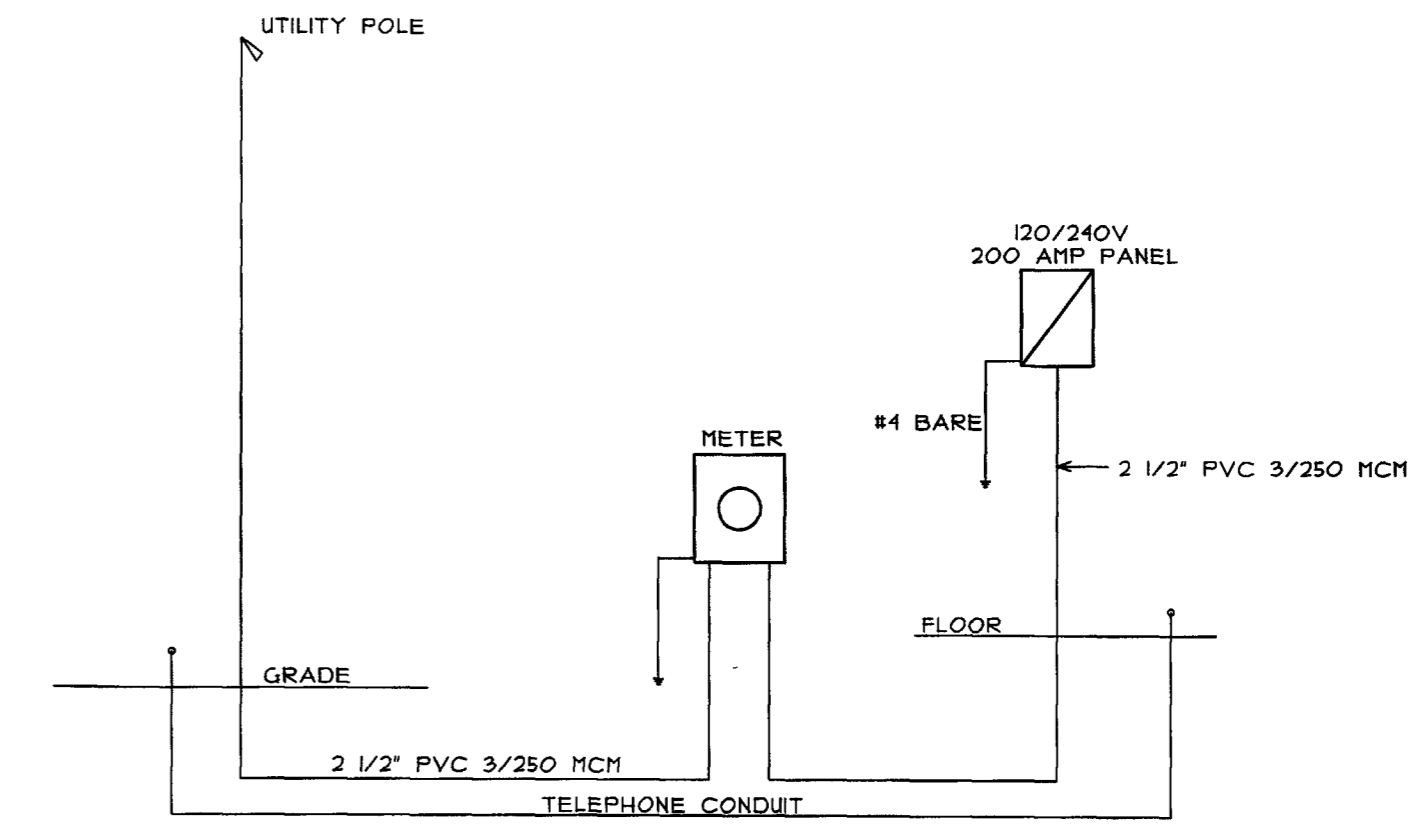


PANEL SCHEDULE

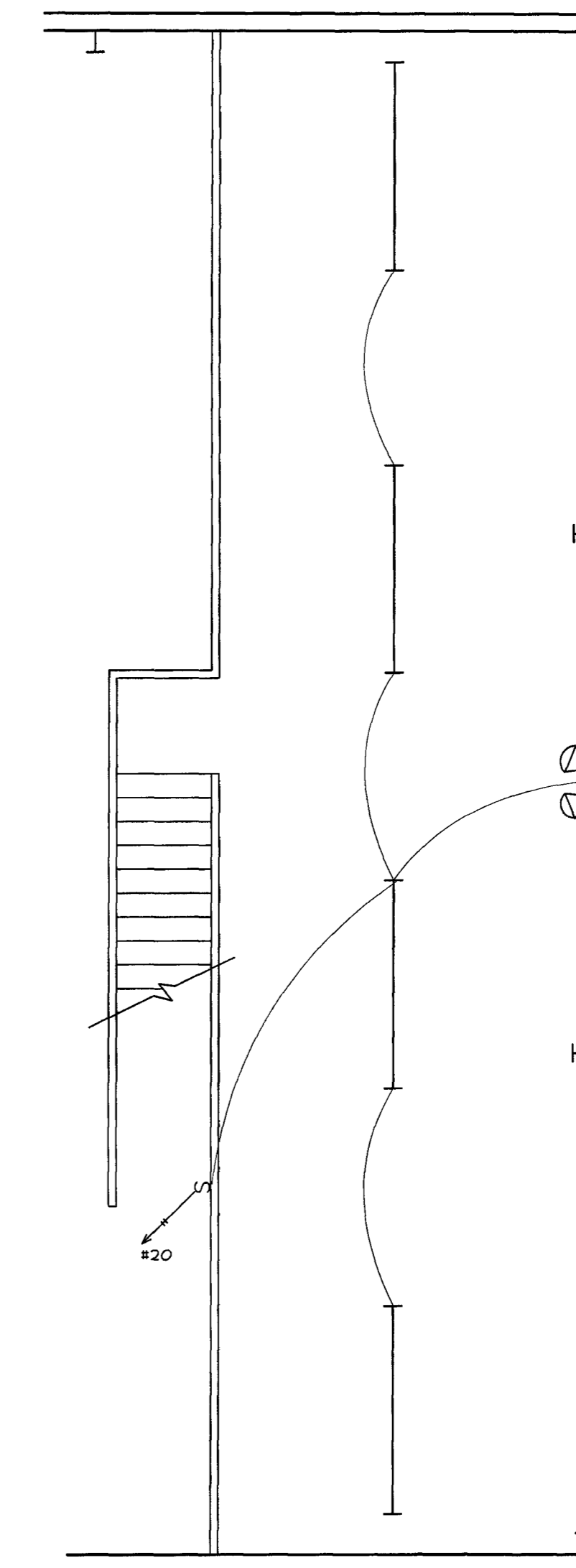
LEGEND

- Homeruns – hashmarks denote number of wires
- ☐ Light & power panel
- ☐ Wall packs (175 watt)
- Four-foot, 4-lamp, T5 fixtures
- Eight-foot, 2-lamp F96 fixtures
- ☒ 2x2, 2-lamp U-tube fixtures
- ☒ 2x4, 3-lamp T-8 fixtures
- ⊖ Electrical thermostat
- ⊕ Junction box
- ⊕ Emergency/exit light
- ⊕ Emergency light
- S Single pole switch
- ⊕ Duplex receptacle
- ⊕ Duplex receptacle, ground-fault
- ⊕ Duplex receptacle – denote circuit number
- Baseboard electric heat – number denotes length

- | | |
|---------------------------------|----------------------------------|
| 1) Storage lights – 20 amp | 2) Office lights – 20 amp |
| 3) Storage lights – 20 amp | 4) Bath power – 20 amp |
| 5) Fire alarm – 20 amp | 6) Storage receptacles – 20 amp |
| 7) Spare – 20 amp | 8) Storage receptacles – 20 amp |
| 9) Outside lights – 20 amp | 10) Storage receptacles – 20 amp |
| 11) Unit Heaters – 20 amp | 12) Storage receptacles – 20 amp |
| 13) Office heat – 20 amp | 14) Storage receptacles – 20 amp |
| 15) — | 16) Office heat – 20 amp |
| 17) Office heat – 20 amp | 18) — |
| 19) — | 20) Mezzanine lights – 20 amp |
| 21) Office receptacles – 20 amp | 22) Office receptacles – 20 amp |
| 23) Office receptacles | 24) — |
| 25) — | 26) — |
| 27) — | 28) — |
| 29) — | 30) — |
| 31) — | 32) — |
| 33) — | 34) — |
| 35) — | 36) — |
| 37) — | 38) — |
| 39) — | 40) — |



FIRST FLOOR PLAN



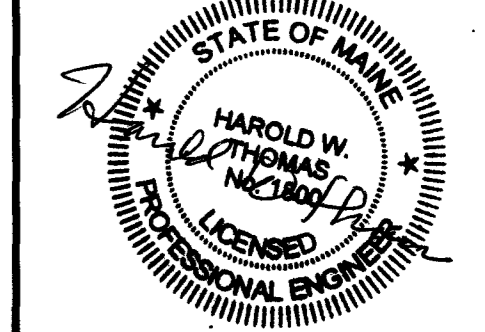
SECOND FLOOR MEZZANINE



BISKUP CONSTRUCTION, INC.
16 DANIELLE DRIVE
WINDHAM, MAINE 04092
TEL. (207) 892-9800
FAX. (207) 892-9895

WWW.BISKUPCONSTRUCTION.COM

STAMP



PROJECT:
PROPOSED STORAGE BUILDING
BROOKLAWN MEMORIAL PARK
PORTLAND, MAINE

REVISIONS	
DATE	DESCRIPTION

DATE: 9/25/2009
SCALE: 3/16" = 1'-0"
DESIGNER: JB
CHECKED BY: JB

© COPYRIGHT
BISKUP CONSTRUCTION, INC.

SHEET TITLE
ELECTRICAL PLAN

SHEET NUMBER
E-1
SHEET 1 OF 1