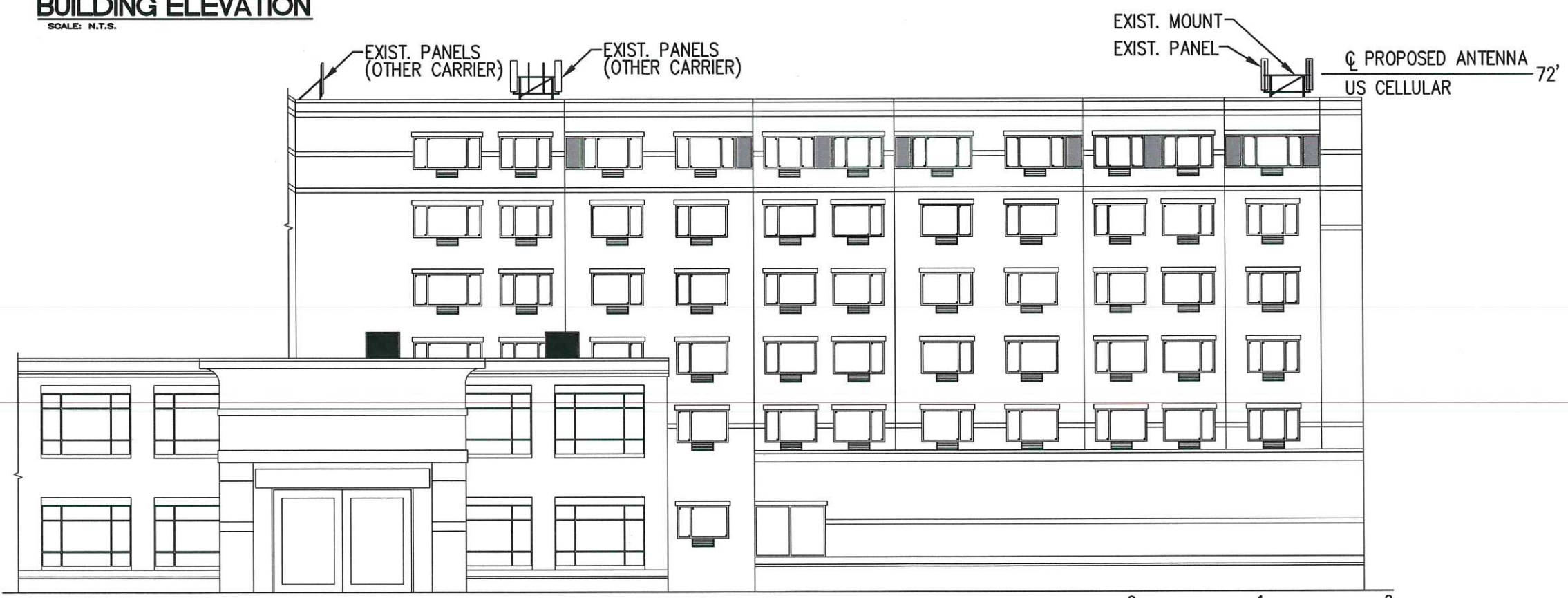


BUILDING ELEVATION
SCALE: N.T.S.



BUILDING ELEVATION
SCALE: N.T.S.



PLANS PREPARED FOR:

US Cellular
We connect with you
10 Corporate Drive, Suite 210, Bedford, NH 03110

PROJECT INFORMATION

853326 - PORTLAND JETPORT
1050 WESTBROOK STREET
PORTLAND, ME 04102
(CUMBERLAND COUNTY)

PLANS PREPARED BY:

amec foster wheeler

511 Congress Street, Portland ME 04101
P: (207) 775-5401 F: (207) 772-4762 www.amec.com

PROJECT COORDINATION & MANAGEMENT:

KJK Wireless, LLC
127 Ridge Road, Nashua, NH 03062
Phone: (603) 888-8974

△	07/21/17	FOR CONSTRUCTION
REV	DATE	ISSUED FOR

PROJECT NO: 3618178589

DRAWN BY: JMF

RELEASED BY: MSD

SHEET TITLE
BUILDING ELEVATIONS

SHEET NUMBER	REVISION:
C-4	0