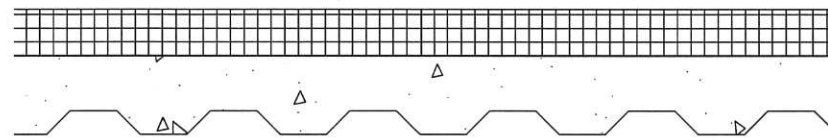
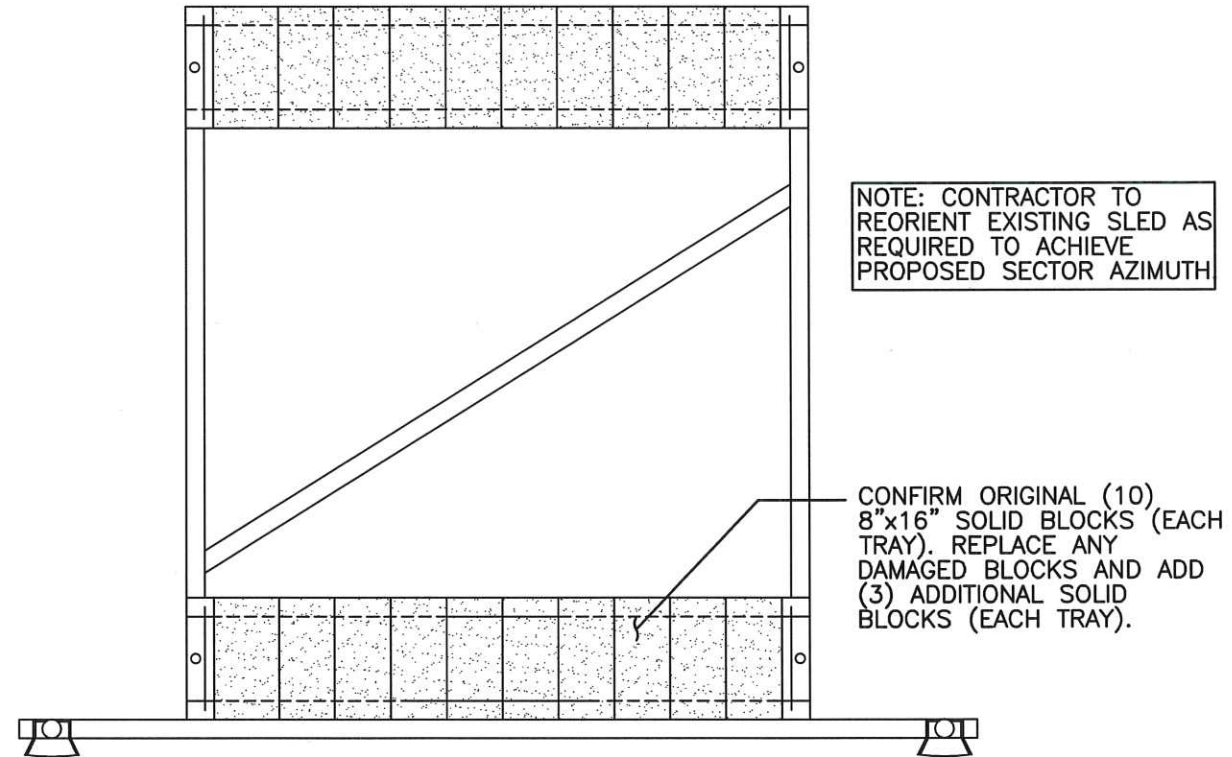
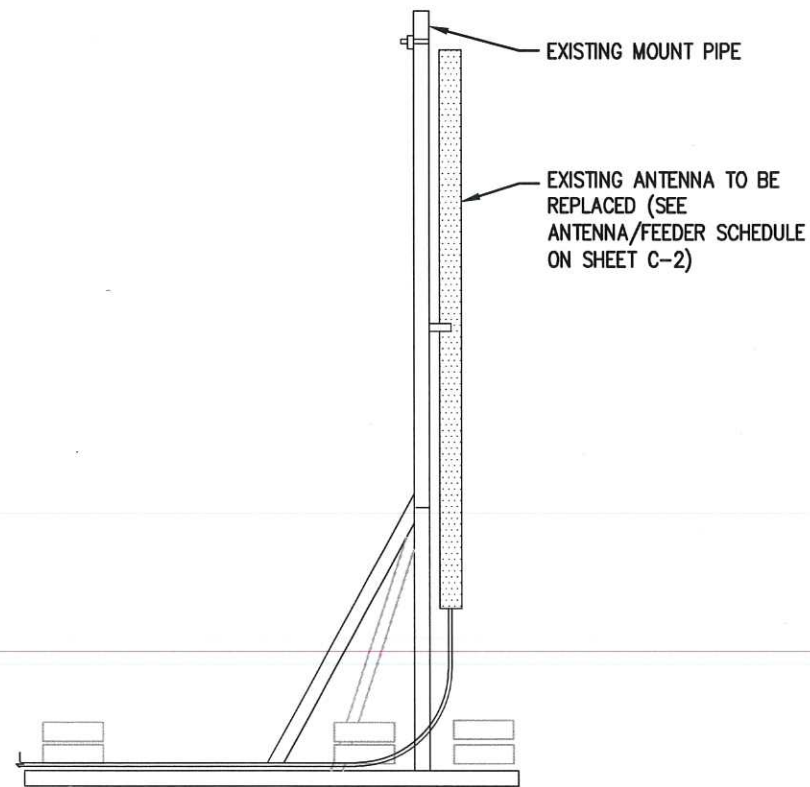


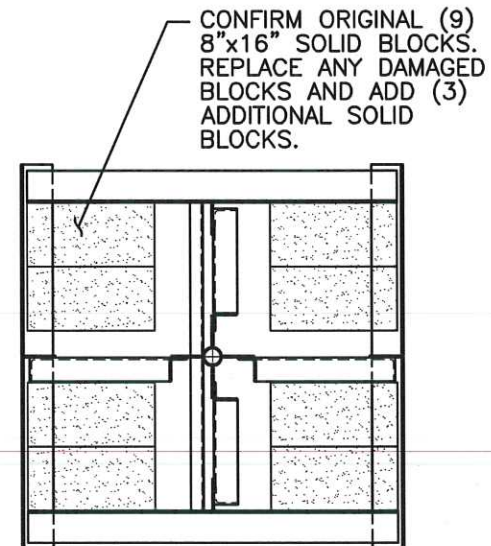
**A**  
C-2 **DETAIL - H-FRAME REPAIR**  
SCALE: N.T.S.



**C**  
C-2 **DETAIL - TYPICAL PANEL MOUNTING**  
SCALE: N.T.S.



**B**  
C-2 **DETAIL - TWO PANEL SLED (TYP. 2)**  
SCALE: N.T.S.



**D**  
C-2 **DETAIL - SINGLE PANEL SLED**  
SCALE: N.T.S.

NOTE: CONTRACTOR TO REORIENT EXISTING SLED AS REQUIRED TO ACHIEVE PROPOSED SECTOR AZIMUTH

CONFIRM ORIGINAL (10) 8"x16" SOLID BLOCKS (EACH TRAY). REPLACE ANY DAMAGED BLOCKS AND ADD (3) ADDITIONAL SOLID BLOCKS (EACH TRAY).

CONFIRM ORIGINAL (9) 8"x16" SOLID BLOCKS. REPLACE ANY DAMAGED BLOCKS AND ADD (3) ADDITIONAL SOLID BLOCKS.

PLANS PREPARED FOR:



PROJECT INFORMATION

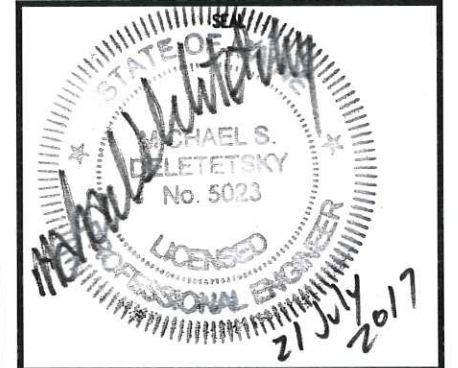
**853326 - PORTLAND JETPORT**  
1050 WESTBROOK STREET  
PORTLAND, ME 04102  
(CUMBERLAND COUNTY)

PLANS PREPARED BY:

**amec foster wheeler**  
511 Congress Street, Portland ME 04101  
P: (207) 775-5401 F: (207) 772-4762 www.amec.com

PROJECT COORDINATION & MANAGEMENT:

**KJK Wireless, LLC**  
127 Ridge Road, Nashua, NH 03062  
Phone: (603) 888-8974



REV	DATE	ISSUED FOR
1	07/21/17	FOR CONSTRUCTION

PROJECT NO: 3618178589

DRAWN BY: JMF

RELEASED BY: MSD

SHEET TITLE  
EQUIPMENT DETAILS

SHEET NUMBER	REVISION:
C-3	0