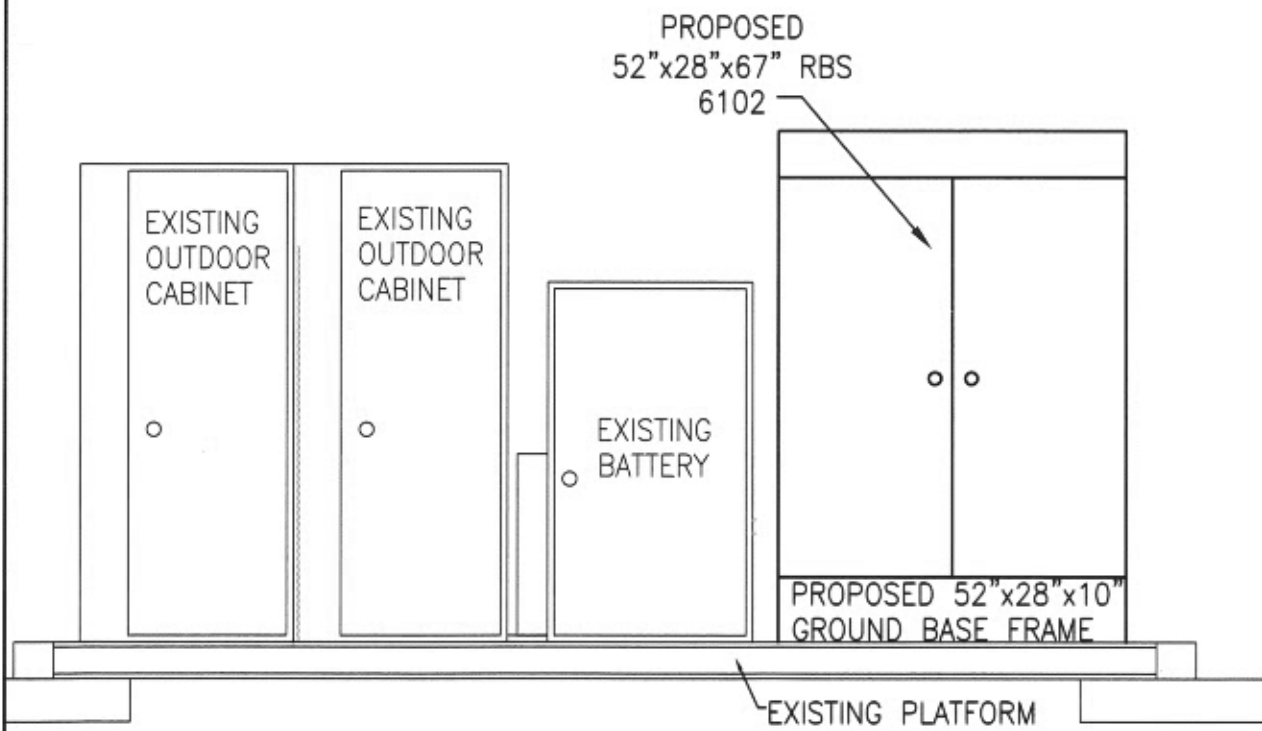


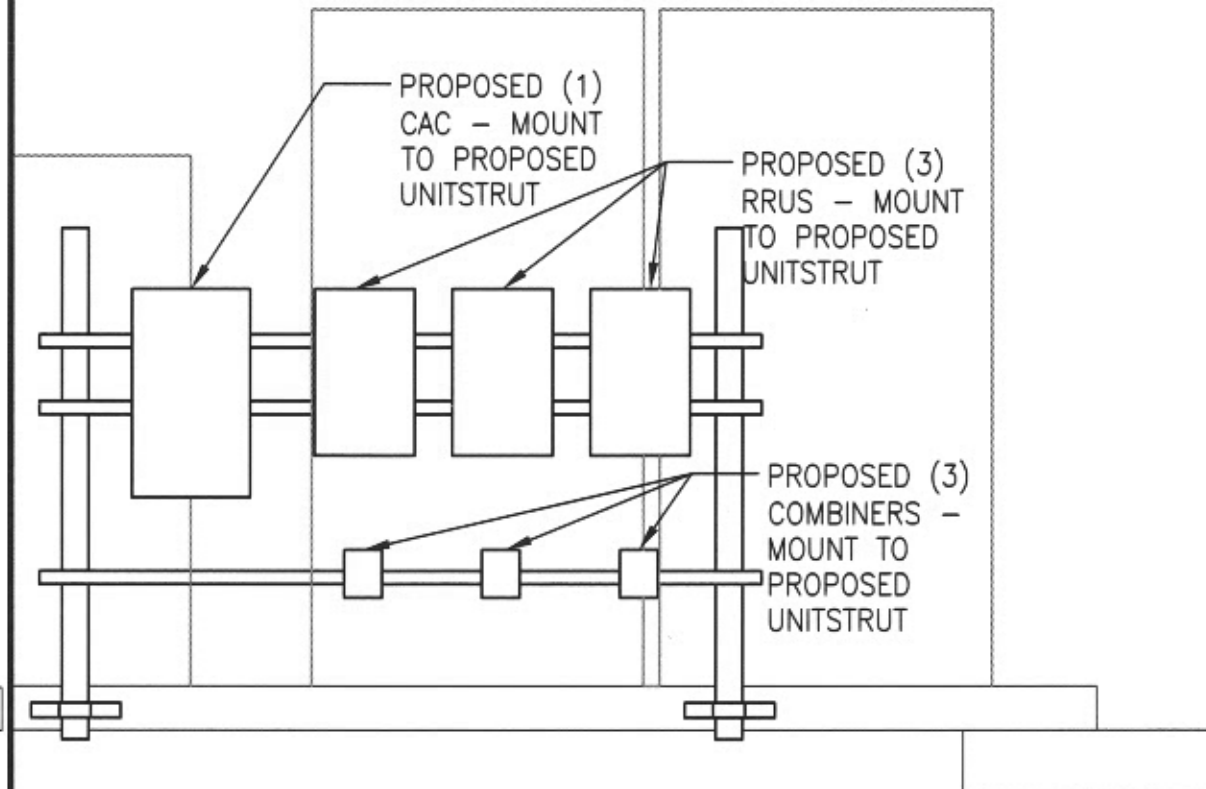
NOTE: CONTRACTOR PLEASE REFER TO STRUCTURAL ANALYSIS VERIFICATION LETTER PROVIDED BY AMEC ENVIRONMENT & INFRASTRUCTURE, INC. DATED 06-04-13 FOR DETAILS.

**EQUIPMENT LAYOUT**

SCALE: N.T.S.



**A EQUIPMENT ELEVATION**  
SCALE: N.T.S.



**B RRUS AND COMBINERS ELEVATION**  
SCALE: N.T.S.

PLANS PREPARED FOR:



PROJECT INFORMATION

**853326 - PORTLAND JETPORT**  
1050 WESTBROOK STREET  
PORTLAND, ME NE 04102  
(CUMBERLAND COUNTY)

PLANS PREPARED BY:



511 Congress Street Suite 200, Portland ME 04101  
P: (207) 774-5401 F: (207) 775-4762 www.amec.com

PROJECT COORDINATION & MANAGEMENT:

**KJK Wireless, LLC**  
127 Ridge Road, Nashua, NH 03062  
Phone: (603) 888-8974



REV	DATE	ISSUED FOR
1	6/4/13	ISSUED FOR CONSTRUCTION

PROJECT NO: 3618138235

DRAWN BY: EJG

RELEASED BY: MSD

SHEET TITLE  
**EQUIPMENT LAYOUT  
PLAN AND ELEVATIONS**

SHEET NUMBER	REVISION:
<b>C1</b>	<b>0</b>