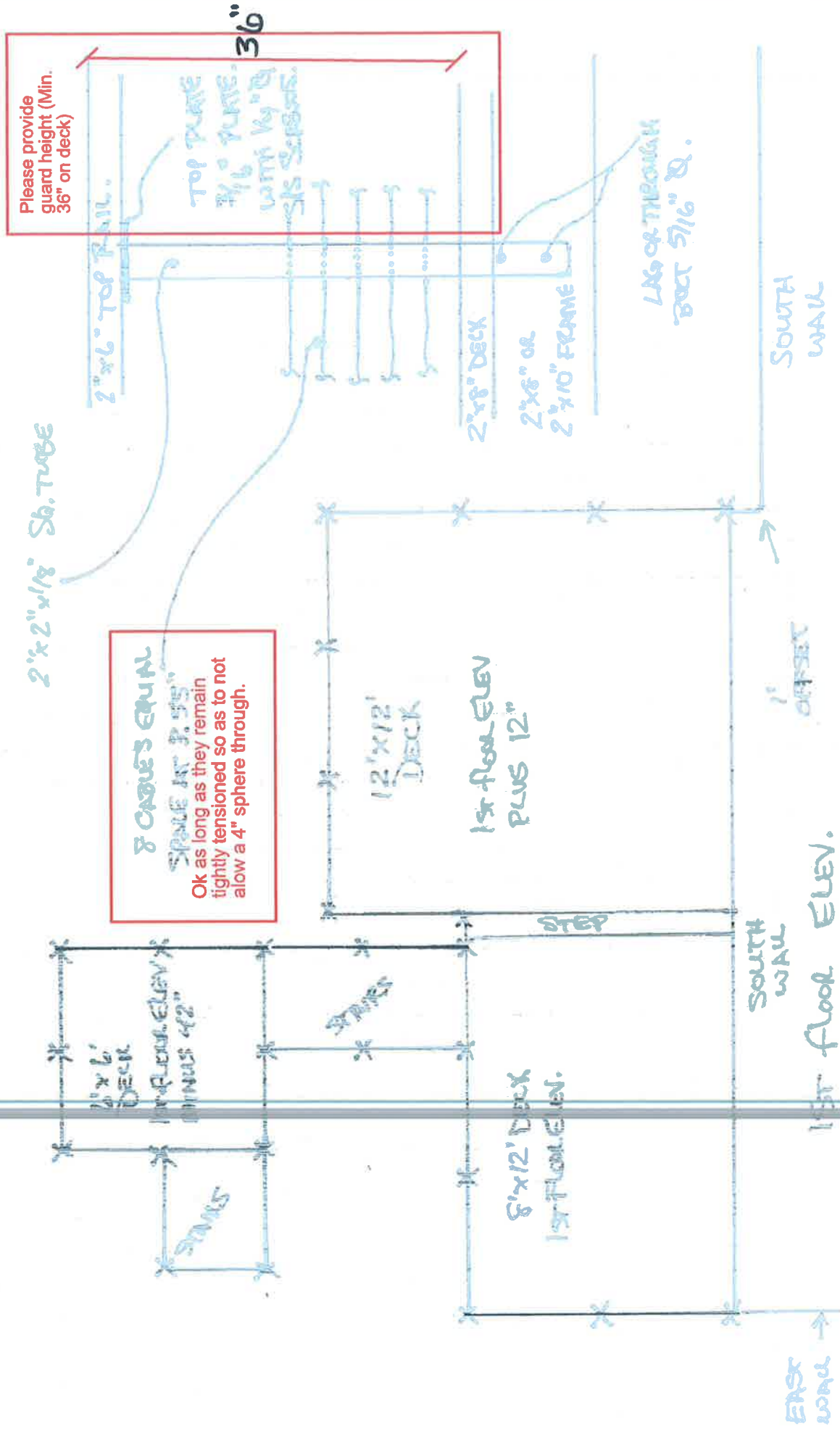


COCHRANE 210 BODY (TRX MAP) 44 CORRS ME DECK CONSTRUCTION PERMIT
 HORIZONTAL PART PLAN - LOCATIONS "X" TO SCALE 1" PER SQUARE
 POSTS 2" x 2" x 1/8" STEEL TUBE (LAGS + CL THROUGH BOAT DEPENDING ON
 LOCATION). HORIZONTAL "RESTRAINT" SYSTEM 1/4" OD COATED STEEL CABLES.
 8 CABLES EQUALLY SPACED @ 7.55". TOP HANG RAIL 2" x 6" CEDAR. LAGS
 BOSS + TUBULAR "BOSS" STAINLESS STEEL (DIMENSIONS SEE 5/16 DIA FULL DEPTH
 OF 2" x 8" OR 2" x 10". END POINTS TERMINATIONS ARE
 1/4" x 3/4" S/S BUSHINGS WITH 2 SET SCREWS, EA.

SECTION N.T.S.



Please provide
 guard height (Min.
 36" on deck)

8 CABLES EQUAL
 SPACE AT 7.55"
 Ok as long as they remain
 tightly tensioned so as to not
 allow a 4" sphere through.

2" x 2" x 1/8" Ss. TUBE

TOP PLATE
 3/16" TUBE.
 WITH 1/4" S/S
 S/S SPACERS.

36"

LAGS OR THROUGH
 BOSS 5/16" Ø.

SOUTH
 WALL

1" OFFSET

1ST FLOOR ELEV.

EAST
 WALL

1st floor ELEV
 PLUS 12"

12" x 12"
 DECK

8" x 12" DECK
 1st FLOOR ELEV.

1" x 6"
 DECK

1st FLOOR ELEV
 MINUS 42"

1" x 6"
 DECK

SOUTH
 WALL