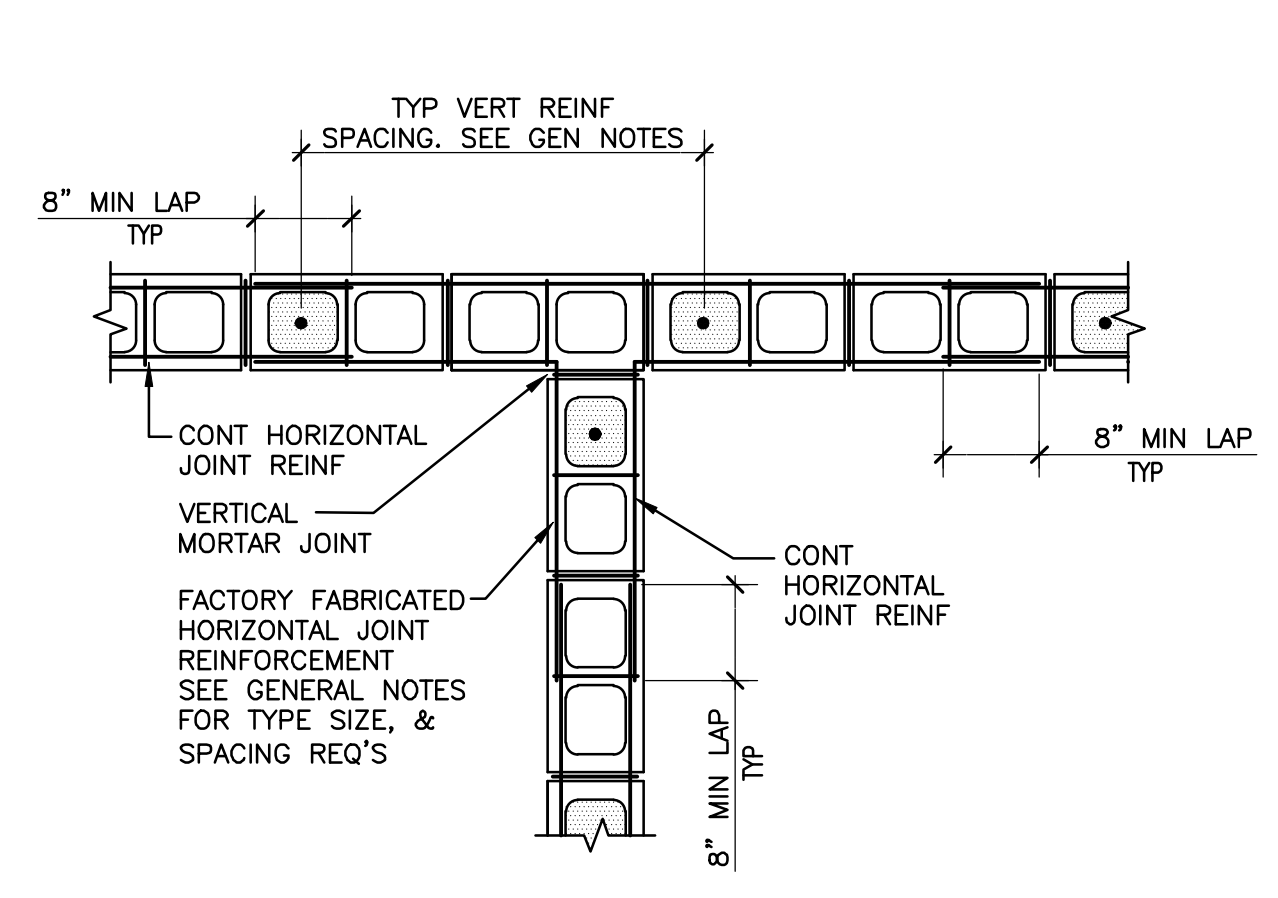


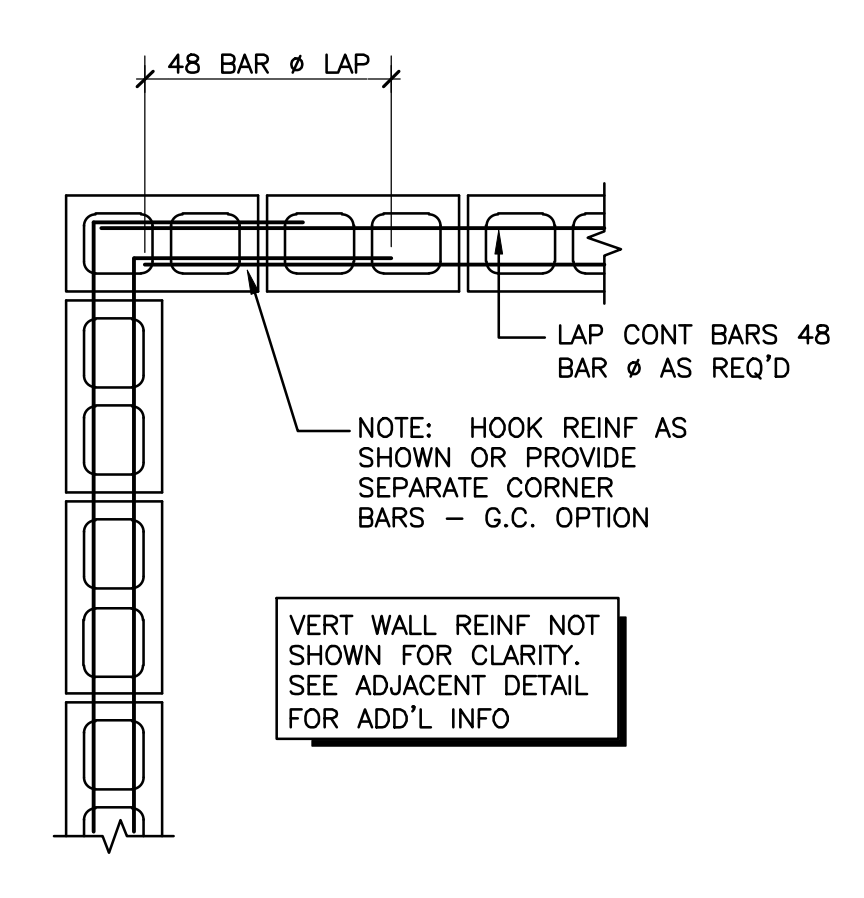
© BOND BEAMS

1 TYP CMU WALL INTERSECTION DETAILS
 S9.1 SCALE: NTS



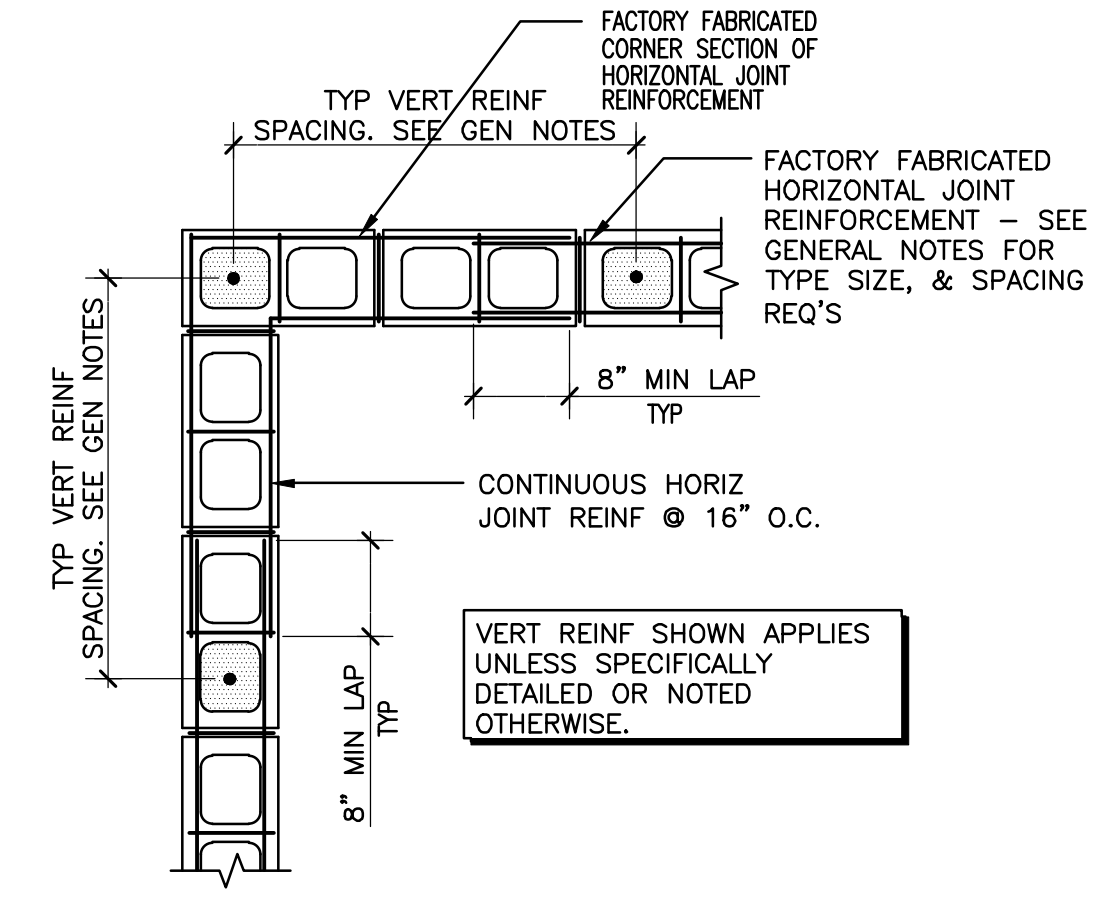
© BOND BEAMS

2 TYP CMU WALL CORNER DETAILS
 S9.1 SCALE: NTS

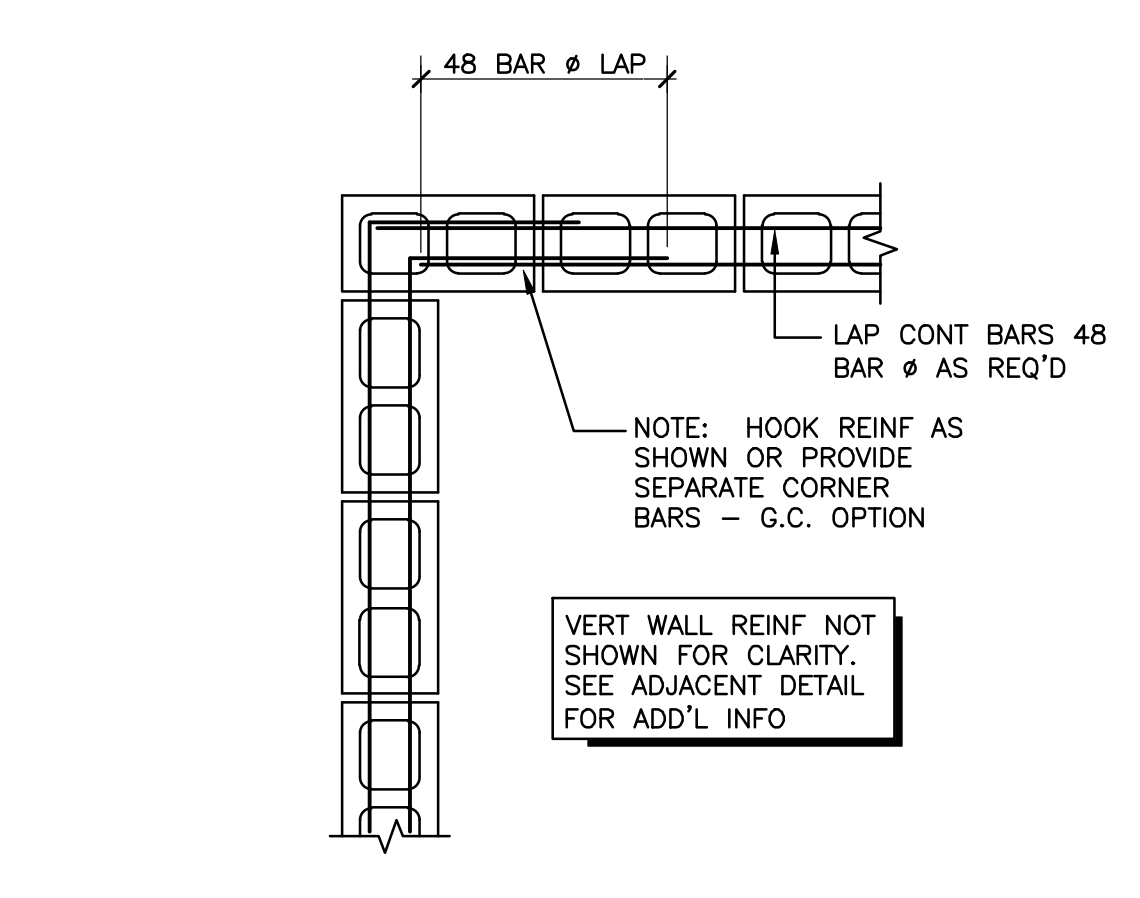


© BOND BEAMS

3 TYP CMU BOND BEAM DETAIL
 S9.1 SCALE: NTS



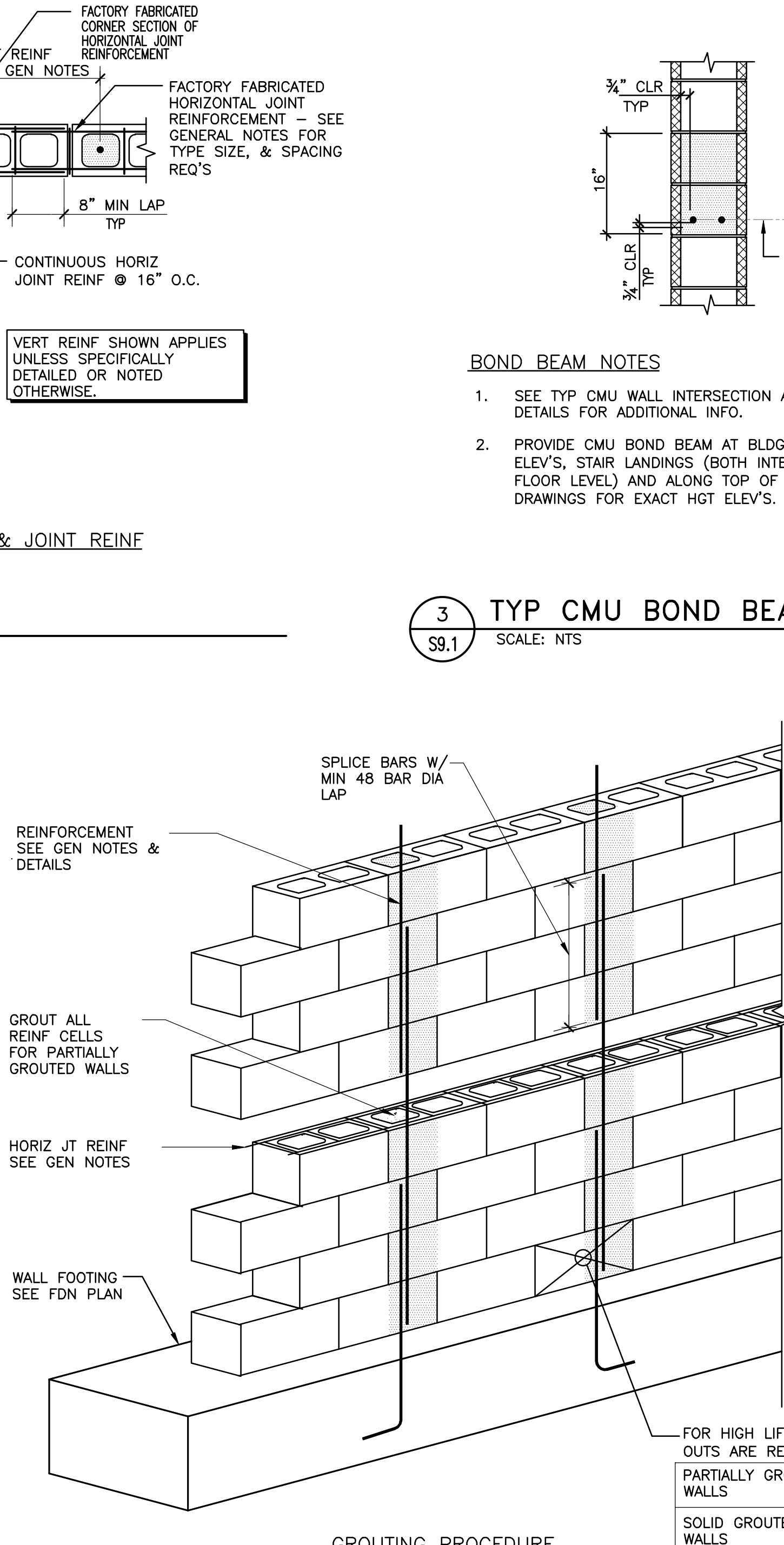
4 TYP CMU WALL OPENING DETAIL
 S9.1 SCALE: NTS



5 TYP CMU LINTEL DETAIL & SCHEDULE
 S9.1 SCALE: NTS

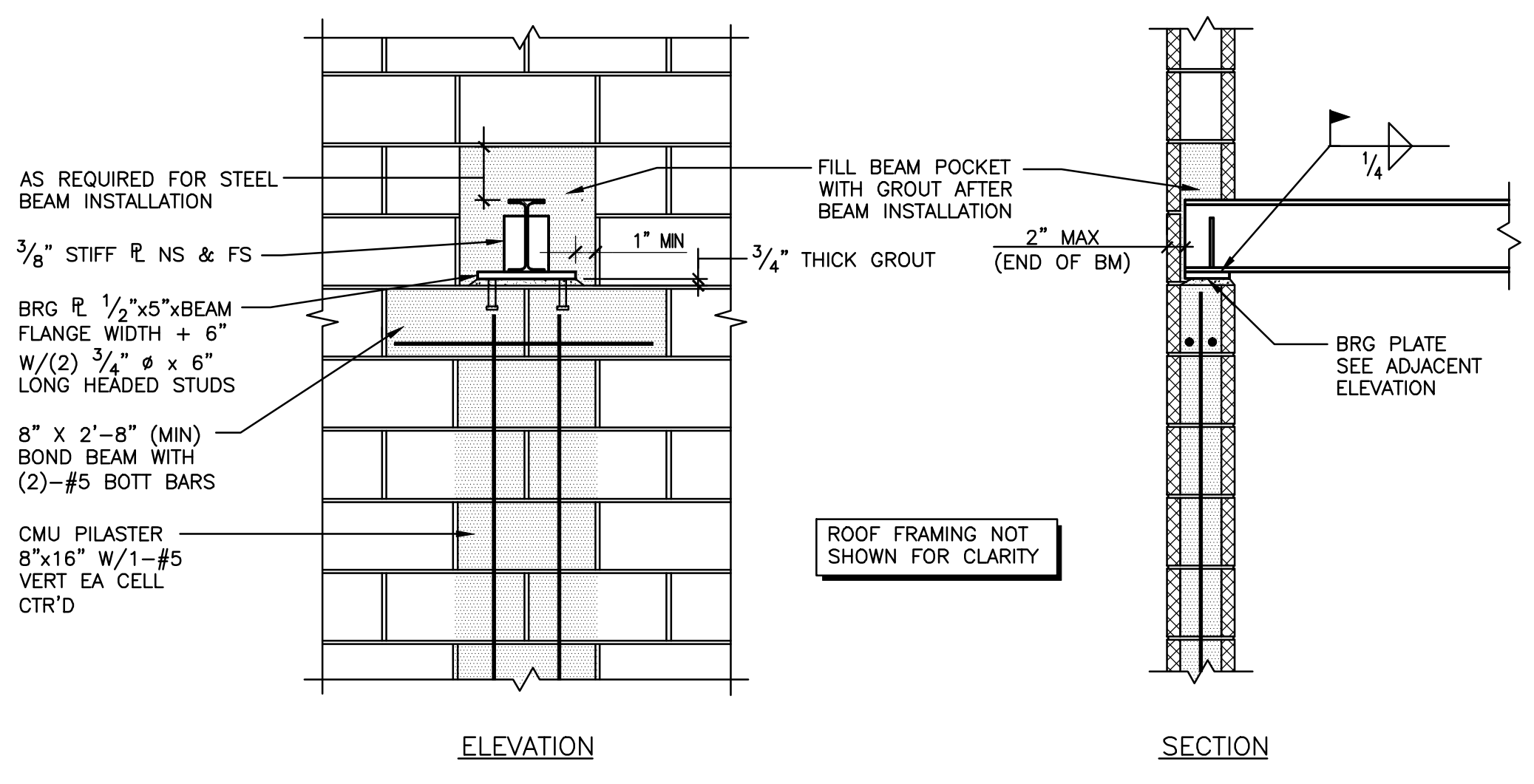
CMU LINTEL SCHEDULE				
CLEAR SPAN	LINTEL DEPTH	LINTEL WIDTH	REINF (BOT)	REINF (TOP)
UP TO 4'-0"	16"	8"	2 #5	N/A
4'-1" TO 6'-0"	24"	8"	2 #6	N/A

- LINTEL SCHEDULE NOTES
- SEE 4/S10.1 FOR TYP WALL REINF INFO.
 - PROVIDE CMU LINTELS FOR ALL OPENINGS IN CMU WALLS FOR WHICH STEEL LINTELS ARE NOT SCHEDULED. PROVIDE 8" MINIMUM BEARING AT EACH END. SEE ARCH DRAWINGS FOR EXACT SIZE AND LOCATION OF ALL OPENINGS.

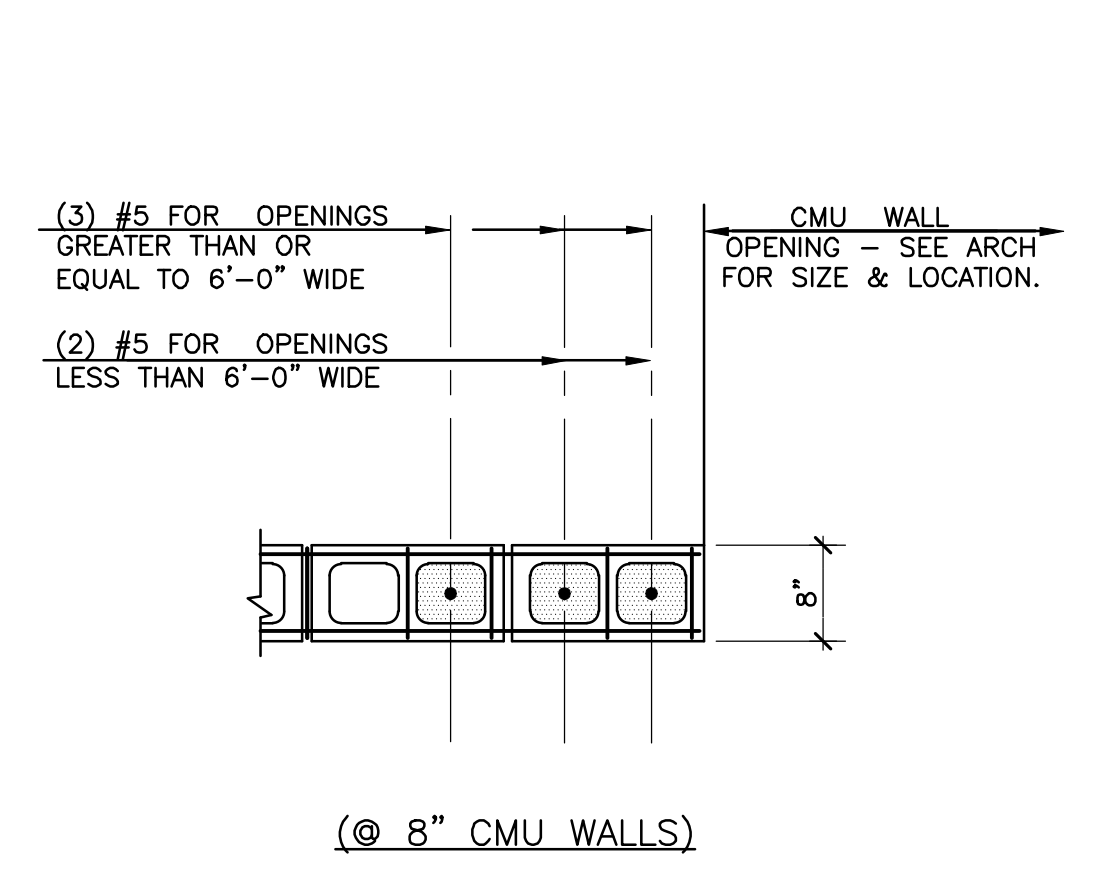


- GROUTING PROCEDURE
- CONSTRUCT CMU WALL AND ALLOW MORTAR TO SET SUFFICIENTLY TO WITHSTAND GROUT PRESSURE.
 - INSPECT UNITS FOR ALIGNMENT. CLEAN OUT CELLS TO BE FILLED.
 - PLACE GROUT IN LIFTS NOT EXCEEDING 5'-0" UNTIL CELLS HAVE BEEN FILLED WITHIN 1/2" OF TOP OF WALL (1/2" FOR BOND BEAMS).
 - DELAY 3 TO 5 MINUTES PRIOR TO CONSOLIDATING EA GROUT LIFT TO ALLOW WATER TO BE ABSORBED BY MASONRY.

6 TYP CMU WALL DETAIL
 S9.1 SCALE: NTS



7 STL BEAM BRG ON CMU WALL DETAIL
 S9.1 SCALE: NTS



8 TYP CMU JAMB DETAIL
 S9.1 SCALE: NTS