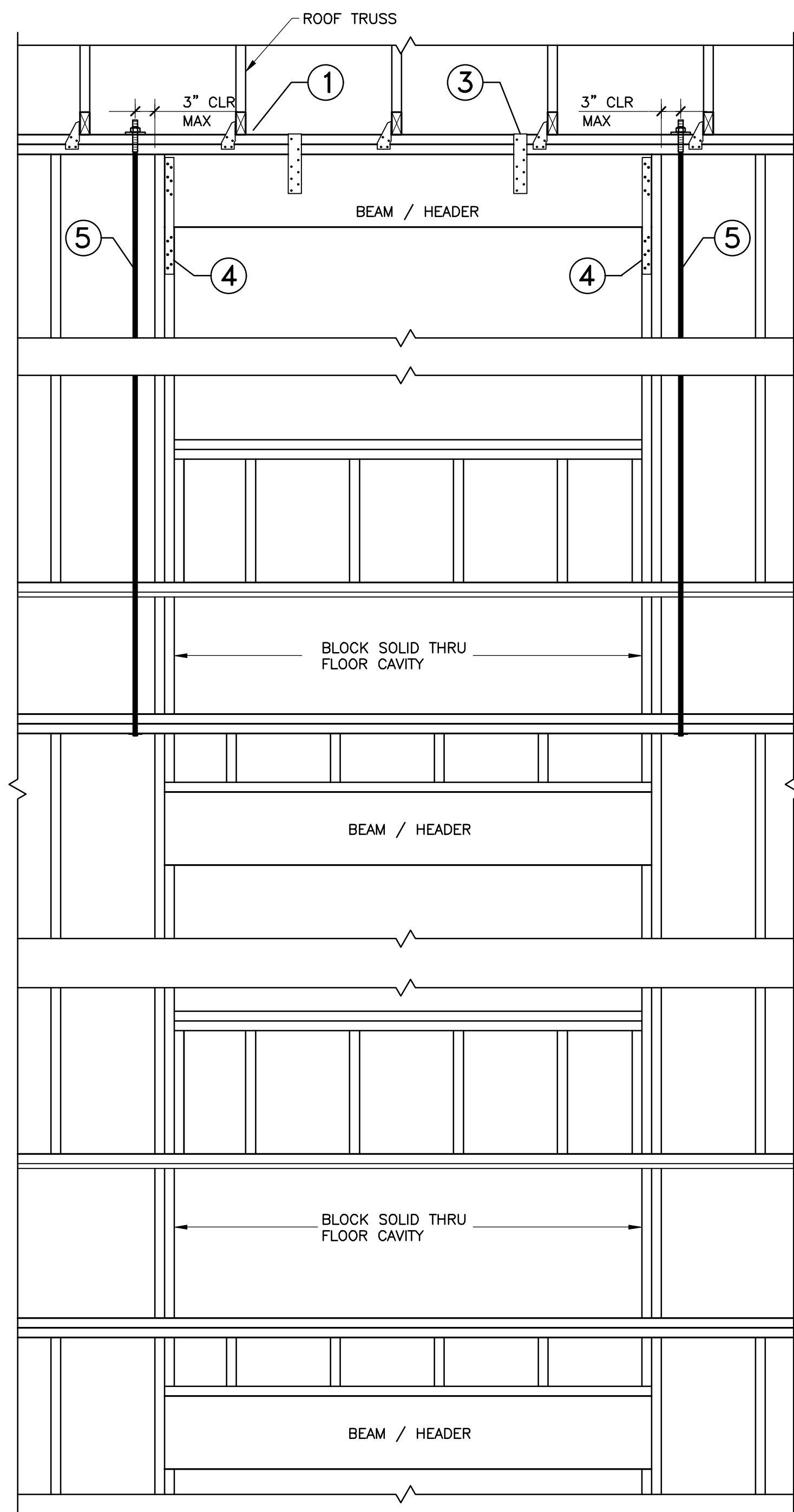
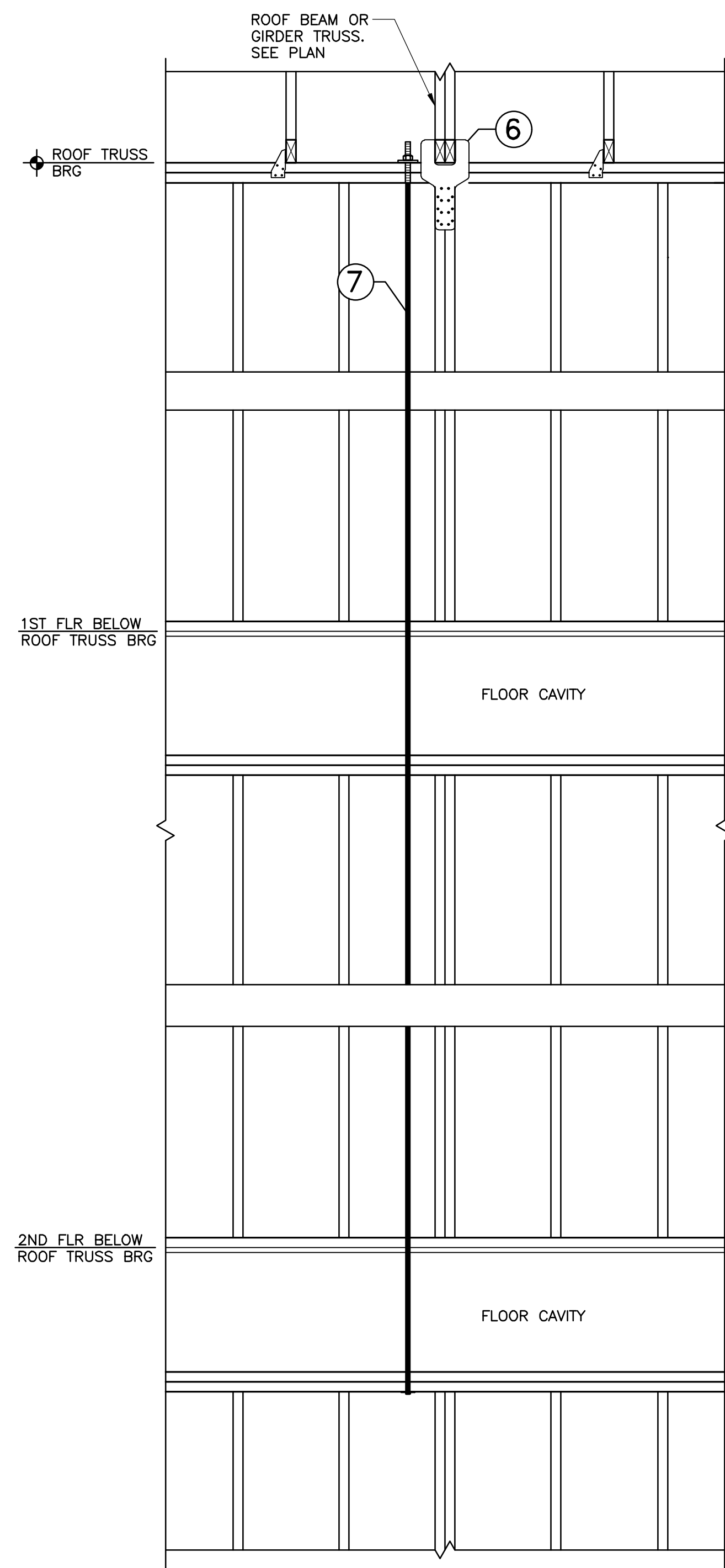


WALL W/O OPENINGS



WALL W/ OPENINGS



1 TYP ROOF TRUSS BEARING WALL ANCHORAGE
SCALE: NTS

2 ROOF BEAM OR GIRDER TRUSS ANCHORAGE
SCALE: NTS

ROOF TRUSS BEARING WALL ANCHORAGE SCHEDULE

CLEAR SPAN	①	②	③	④	⑤
UP TO 4'-0" OPENING	H2.5 CLIP ANCHOR @ EA ROOF TRUSS BEARING POINT	(1) 3/8" CLP SYSTEMS ANCHOR @ 6'-0" OC MAX BETWEEN OPENINGS ³	N/A	N/A	N/A
UP TO 7'-6" OPENING			CS16 STRAP CTR'D ON BEAM W/6-10d EA END ¹	CS16 STRAP W/ 6-10d NAILS EA END ²	(1) 3/8" CLP SYSTEMS ANCHOR

SCHEDULE FOOTNOTES:
1. STRAP SHALL WRAP OVER THE TOP OF DBL TOP PLATE AND W/ NAILS FASTENED DIRECTLY TO FRONT & BACK OF HEADER BEAM.
2. SPECIFIED NUMBER OF NAILS APPLIES TO BEAM & STUDS. NAILS ARE TO BE FASTENED DIRECTLY TO BEAM & STUDS.
3. SEE SHEAR WALL ANCHORAGE NOTES ON 6/S5.0 FOR CLP SYSTEMS SPECIFICATION REQ'S.

GIRDER TRUSS ANCHORAGE AT BEARING WALL SCHEDULE³

ANCHORAGE MARK	⑥	⑦
UP TO 4'-0" OPENING	LGT2 GIRDER TIEDOWN ANCHOR UNO ON PLAN ²	(1) 3/8" DIA CLP SYSTEMS ANCHOR ¹
UP TO 9'-0" OPENING		

SCHEDULE FOOTNOTES:
1. SEE ANCHOR NOTES ON 6/S5.0 FOR CLP SYSTEMS SPECIFICATION REQ'S.
2. EXACT SIZE OF LGT ANCHOR VARIES DEPENDING ON THE WIDTH OF THE BEAM OR NUMBER OF PLYS MAKING UP THE GIRDER TRUSS. THIS DIMENSION MUST BE DETERMINED BY THE G.C. PRIOR TO ORDERING THE ANCHOR.
3. THIS SCHEDULE ONLY APPLIES TO BEAM & GIRDER TRUSS UPLIFT REACTIONS UP TO 2,365 LBS.