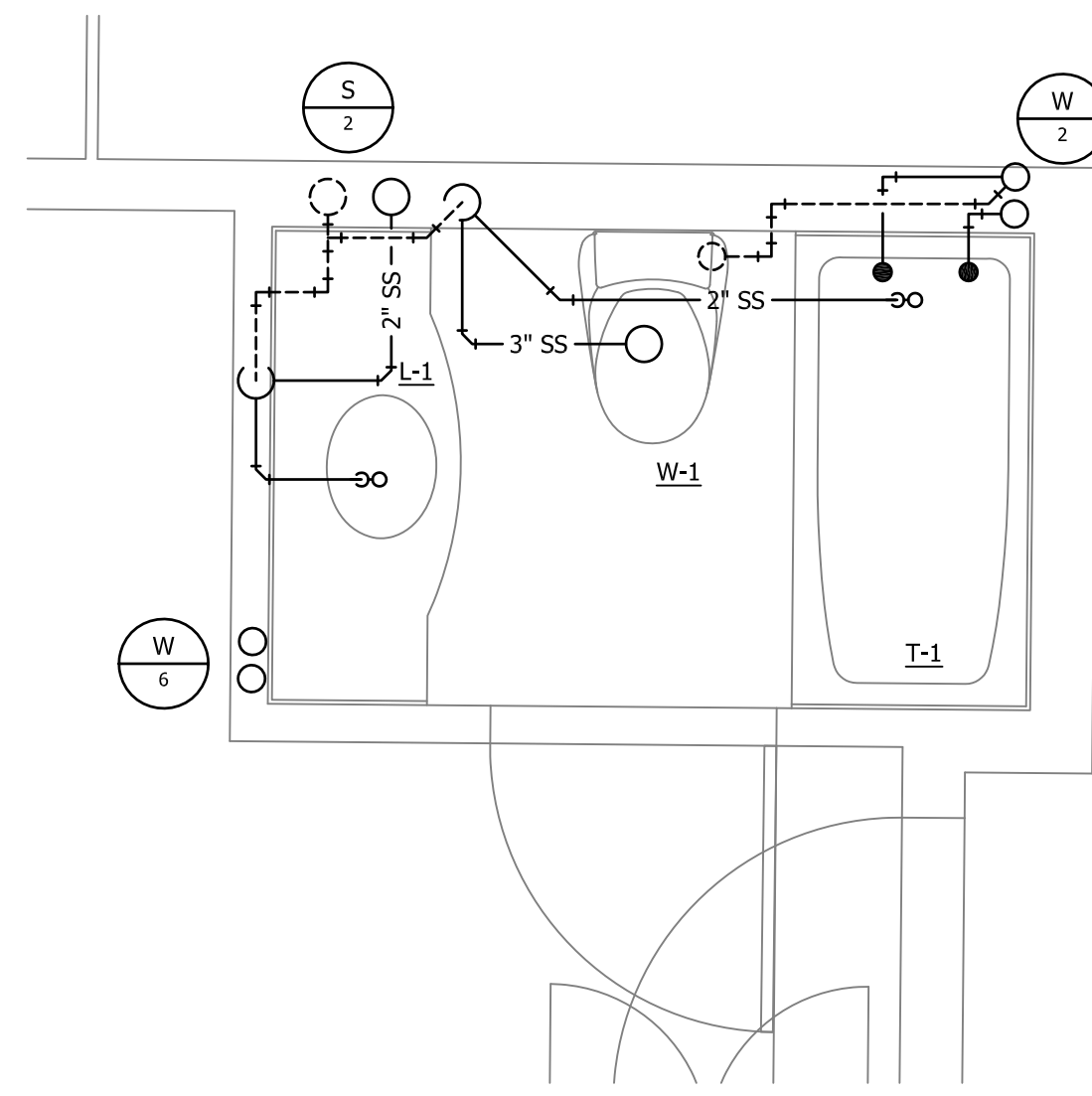
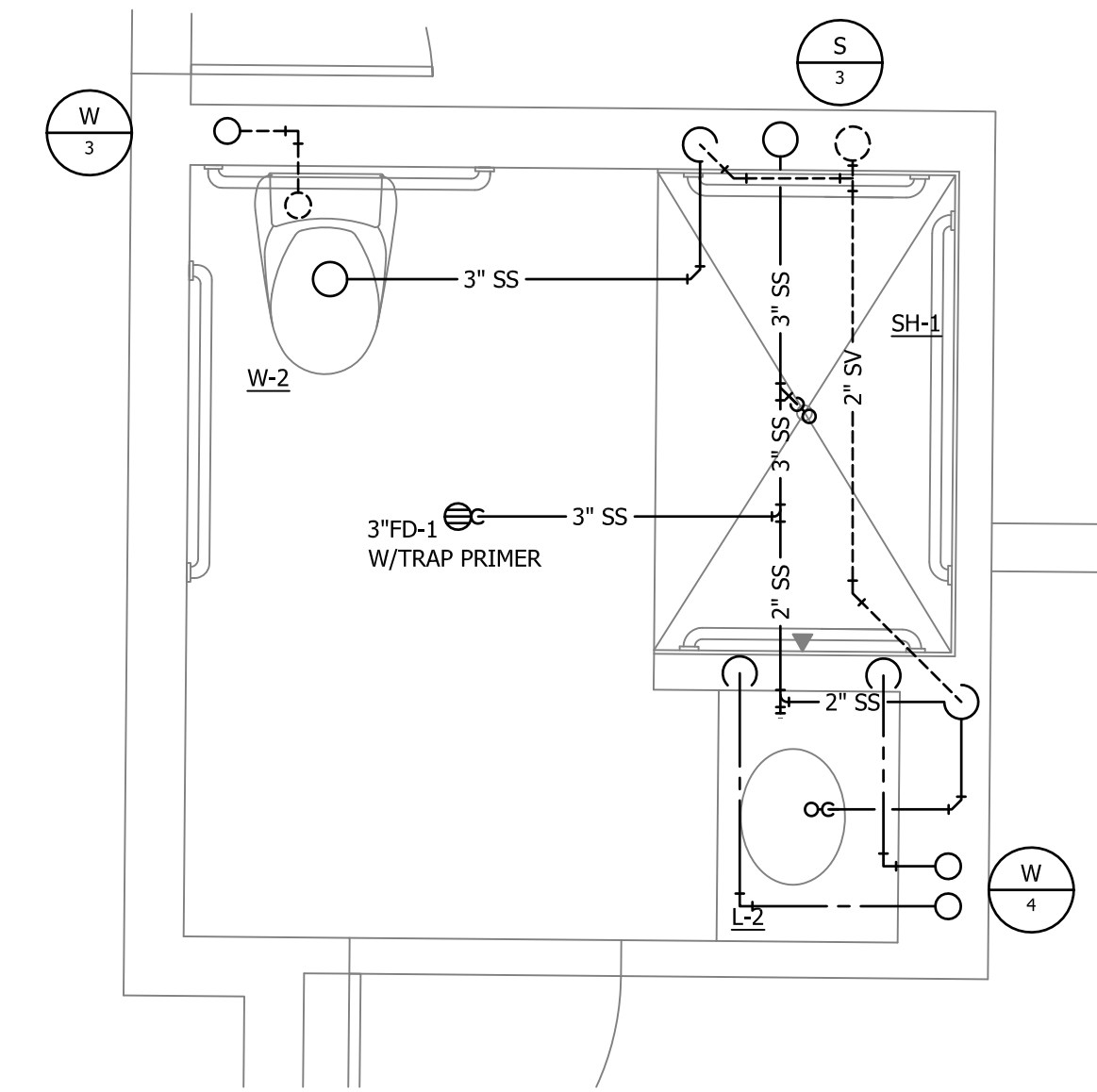


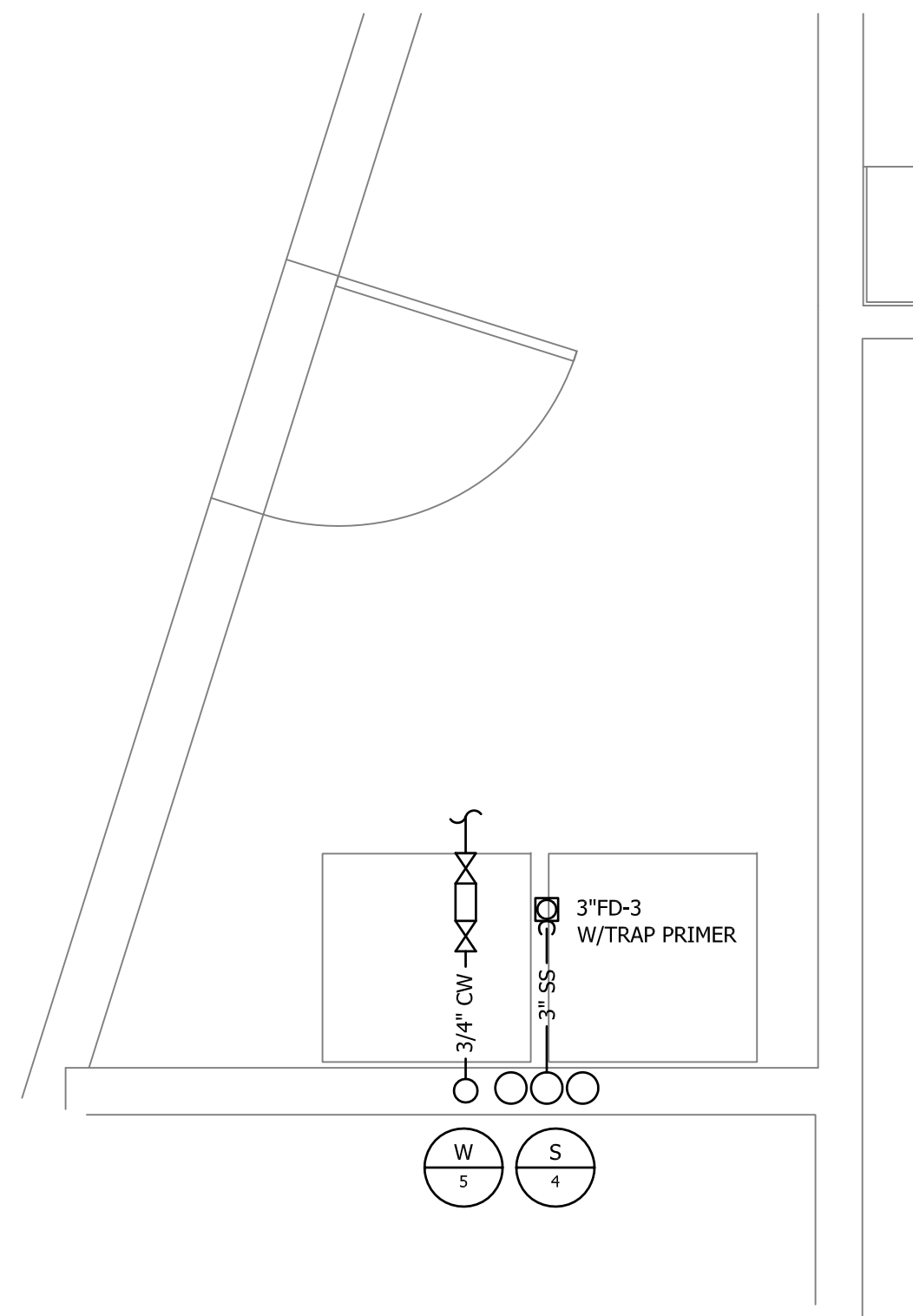
1 BACK TO BACK UNITS FLOOR PLAN - PLUMBING
P3.01 1/2" = 1'-0"



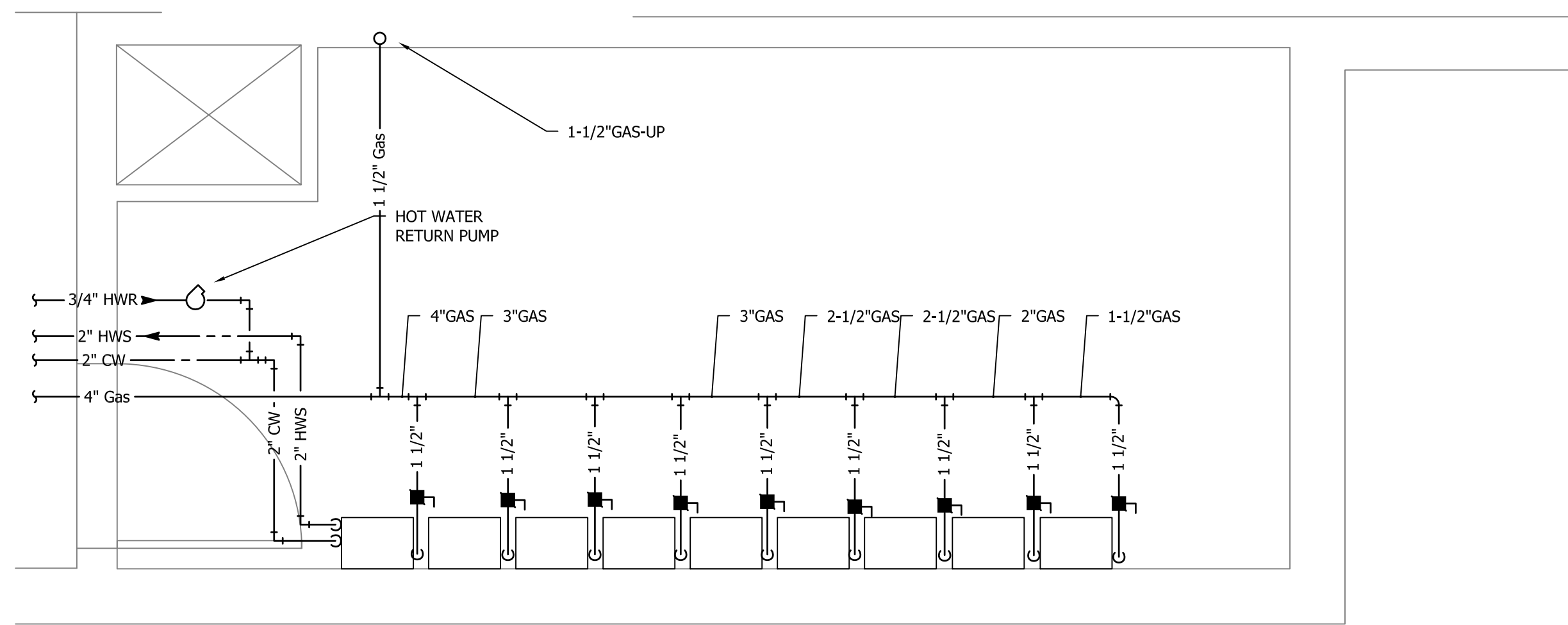
2 SINGLE UNITS FLOOR PLAN-PLUMBING
P3.01 1/2" = 1'-0"



3 ADA UNIT FLOOR PLAN - PLUMBING
P3.01 1/2" = 1'-0"



4 ENLARGED PLAN - VENDING AREA-PLUMBING
P3.01 1/2" = 1'-0"



5 ENLARGED FLOOR PLAN-WATER HEATER ROOM-PLUMBING
P3.01 1/2" = 1'-0"

PROJECT

PORTLAND
HILTON GARDEN
INN ADDITION

LOCATION

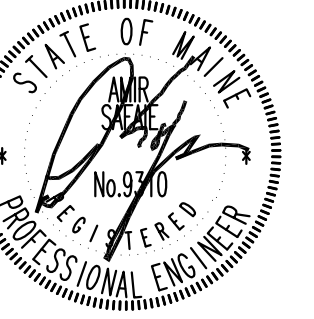
PORTLAND
145 JETPORT BLVD
PORTLAND, MAINE 04102

ARCHITECT



hogan campis architecture
1425 DUTCH VALLEY PL STUDIO B ATLANTA GA 30324
404 685 8866 V 404 685 8878 F WWW.HCARCH.NET

STAMP



ISSUED FOR: DATE:

REVIEW JULY 20 2012

PRICING JAN. 30. 2013

PERMITTING

CONSTRUCTION

REVISIONS

THIS DRAWING IS THE PROPERTY OF THE SAFARIE LANDRY PARTNERSHIP, INC. AND SHALL NOT BE REPRODUCED IN WHOLE OR IN PART WITHOUT WRITTEN PERMISSION. IT SHALL BE LIMITED FOR USE BY THE PROJECT AND SITE SPECIFICALLY IDENTIFIED HEREIN.

JOB NO.

0479.000

DRAWING TITLE

UNIT PLANS -
PLUMBING

SHEET NO.

P3.01

