

PORTLAND HILTON GARDEN INN ADDITION

LOCATION

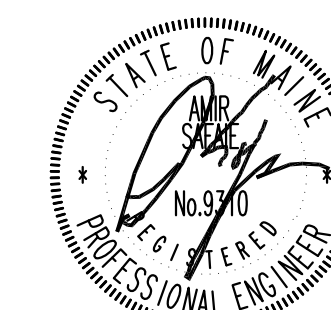
PORTLAND
145 JETPORT BLVD
PORTLAND, MAINE 04102

ARCHITECT



hogan campis architecture
1425 DUTCH VALLEY PL STUDIO B ATLANTA GA 30324
404 685 8868 V 404 685 8878 F WWW.HCARCH.NET

STAMP



ISSUED FOR: DATE:

REVIEW JULY 20 2012

PRICING JAN. 30 2013

PERMITTING

CONSTRUCTION

REVISIONS

THIS DRAWING IS THE PROPERTY OF THE SAFARIE LANDRY PARTNERSHIP, INC. AND SHALL NOT BE REPRODUCED IN WHOLE OR IN PART WITHOUT WRITTEN PERMISSION. IT SHALL BE LIMITED FOR USE BY THE PROJECT AND SITE SPECIFICALLY IDENTIFIED HEREIN.

JOB NO.

0479.000

DRAWING TITLE

FLOOR PLANS - ELECTRICAL

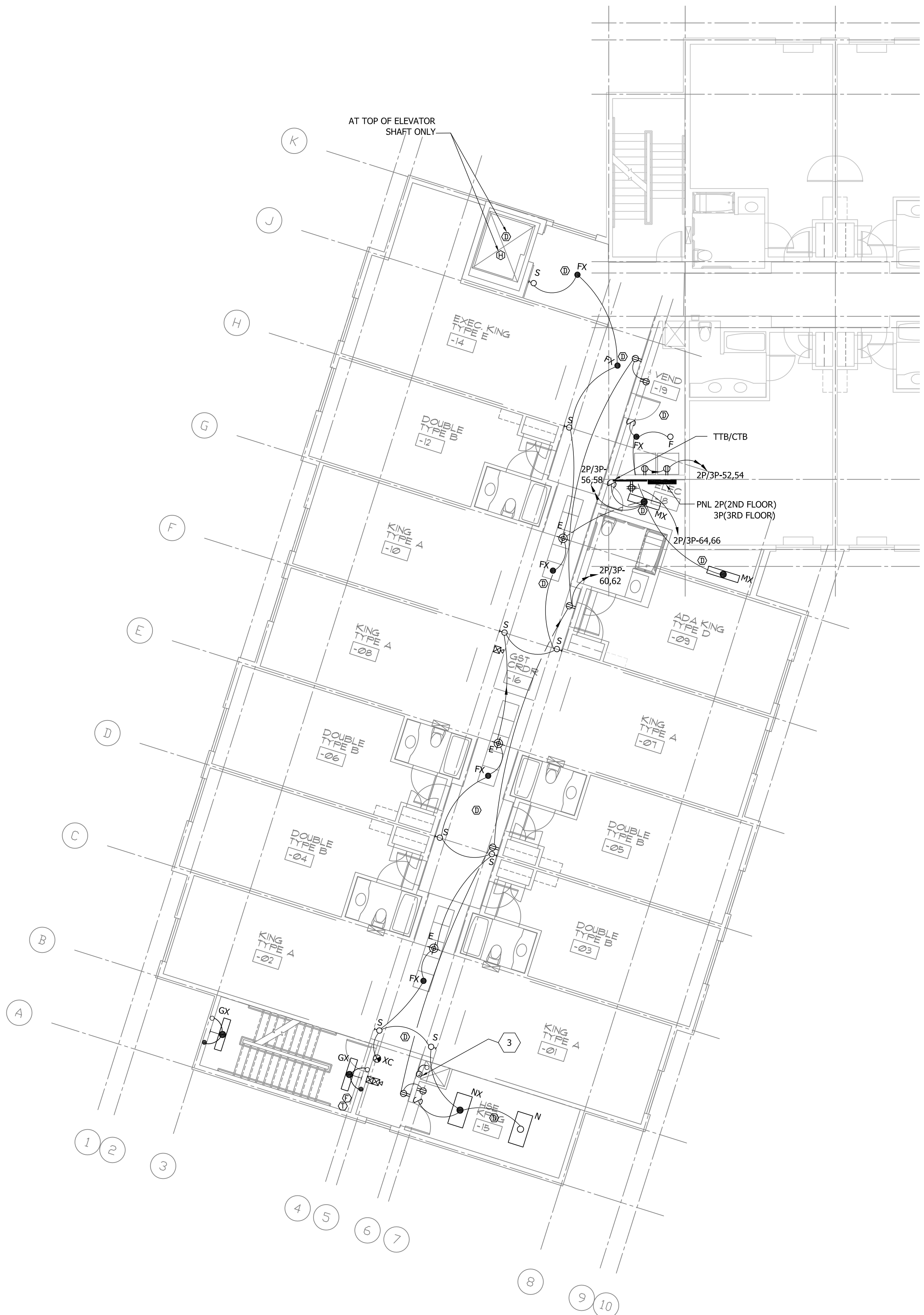
SHEET NO.

E2.01

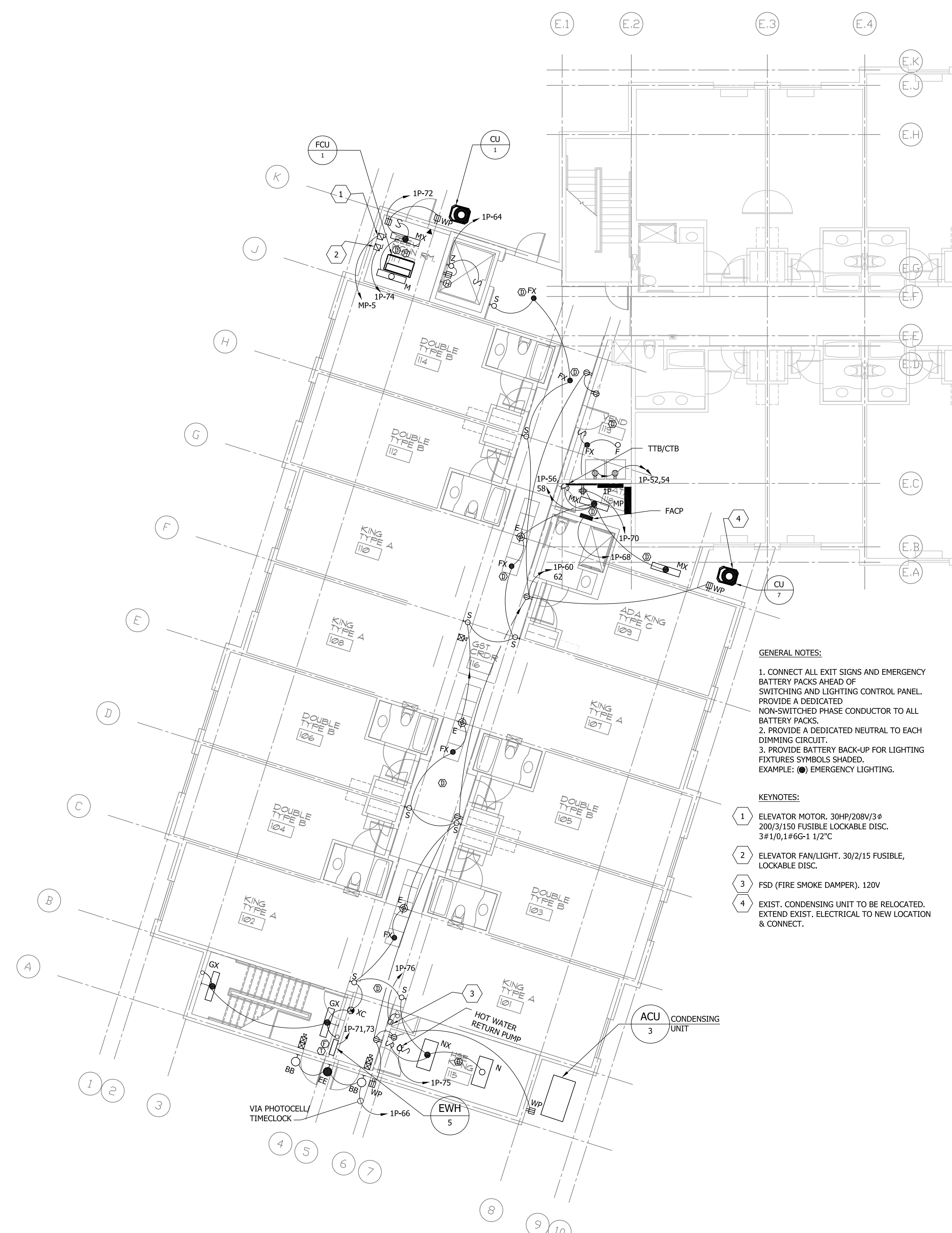
SL PROJECT# 120503

THE SAFARIE LANDRY PARTNERSHIP, INC.

6330 Newmarket Court | Norcross, Georgia 30092



2 TYPICAL LEVEL (2ND & 3RD) FLOOR PLAN - ELECTRICAL
E2.01 1/8"=1'-0"



1 1ST LEVEL FLOOR PLAN - ELECTRICAL
E2.01 1/8"=1'-0"

- GENERAL NOTES:**
1. CONNECT ALL EXIT SIGNS AND EMERGENCY BATTERY PACKS AHEAD OF SWITCHING AND LIGHTING CONTROL PANEL. PROVIDE A DEDICATED NON-SWITCHED PHASE CONDUCTOR TO ALL BATTERY PACKS.
 2. PROVIDE A DEDICATED NEUTRAL TO EACH DIMMING CIRCUIT.
 3. PROVIDE BATTERY BACK-UP FOR LIGHTING FIXTURES SYMBOLS SHADED. EXAMPLE: ● EMERGENCY LIGHTING.

- KEYNOTES:**
- 1 ELEVATOR MOTOR. 30HP/208V/3Ø 200/3/150 FUSIBLE LOCKABLE DISC. 3#1/0,1#6G-1 1/2" C
 - 2 ELEVATOR FAN/LIGHT. 30/2/15 FUSIBLE, LOCKABLE DISC.
 - 3 FSD (FIRE SMOKE DAMPER). 120V
 - 4 EXIST. CONDENSING UNIT TO BE RELOCATED. EXTEND EXIST. ELECTRICAL TO NEW LOCATION & CONNECT.