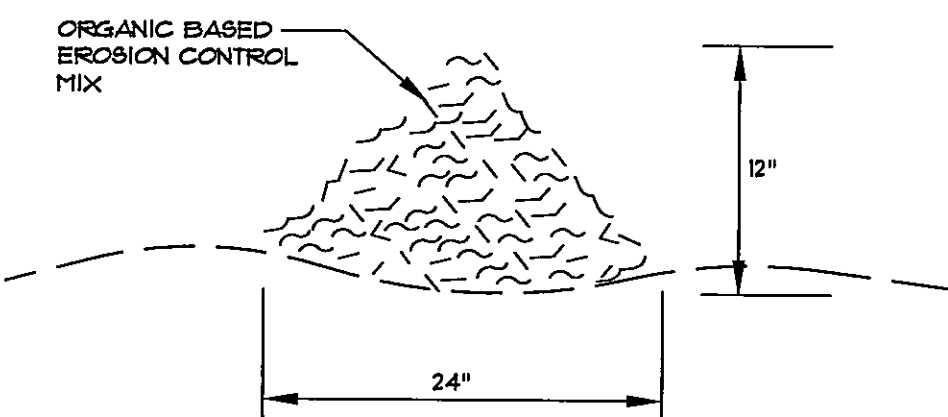


SILT SACK PROTECTION

NOTES:
PRIOR TO FINAL GRADING AND PAVING OPERATIONS BEGIN A CATCH BASIN INSERT (SUCH AS A SILT SACK OR A DANDY BAG®) MUST BE INSTALLED IN EACH BASIN PER MANUFACTURER'S INSTRUCTIONS. HAY BALES SHOULD BE REMOVED ONCE INSERTS ARE INSTALLED.

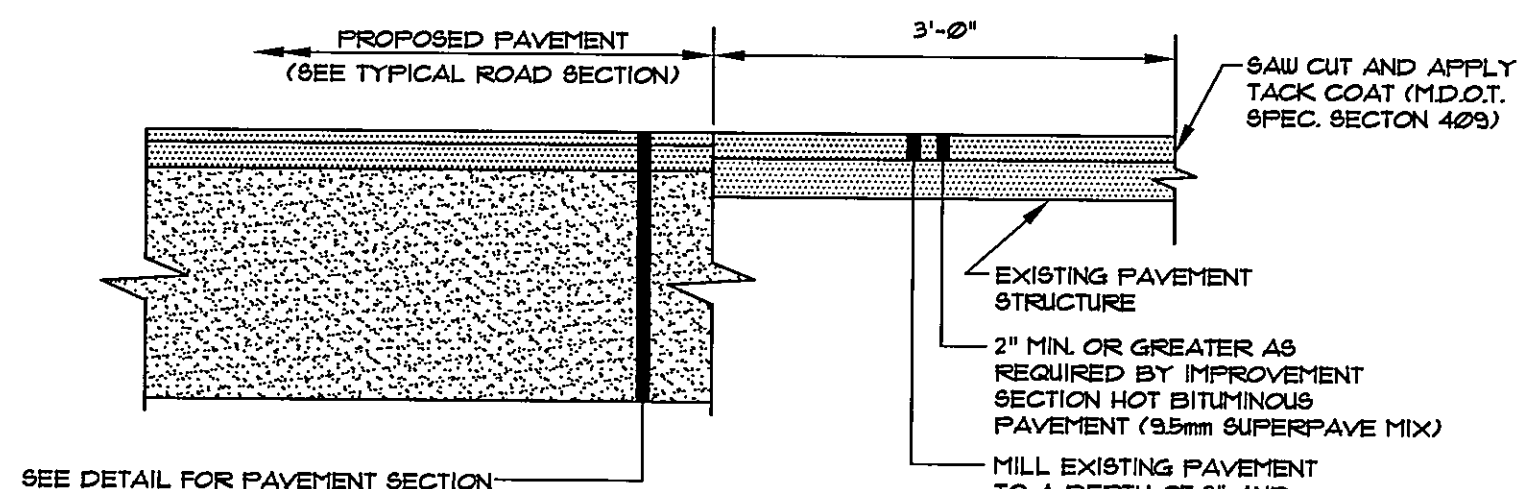
CATCH BASIN PROTECTION DETAIL (FOR PAVED AREAS)
NOT TO SCALE



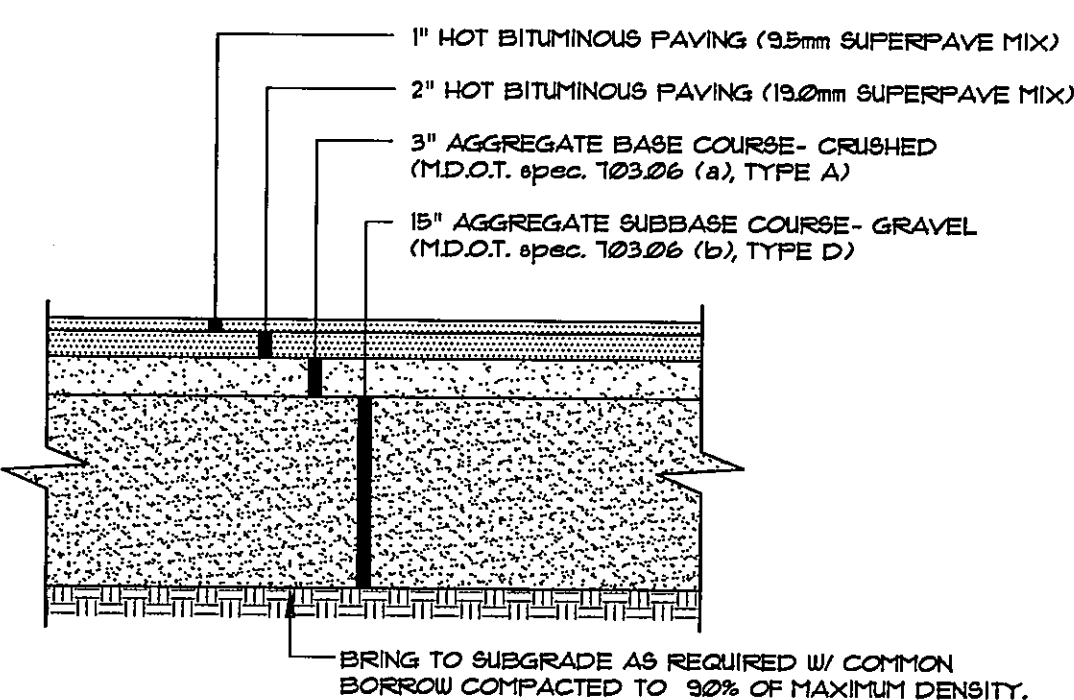
COMPOSITION
EROSION CONTROL MIX SHALL BE MANUFACTURED ON OR OFF THE PROJECT SITE SUCH THAT ITS COMPOSITION IS IN ACCORDANCE WITH THE MDEP MAINE EROSION AND SEDIMENT CONTROL BMP MANUAL, LAST REVISED 3/2003 OR LATER. IT MUST CONSIST PRIMARILY OF ORGANIC MATERIAL, SEPARATED AT THE FRONT OF GENERATION, AND MAY INCLUDE SHREDDED BARK, STUMP GRINDINGS, COMPOSTED BARK OR ACCEPTABLE MANUFACTURED PRODUCTS. WOOD AND BARK CHIPS, GROUND CONSTRUCTION DEBRIS OR REPROCESSED WOOD PRODUCTS WILL NOT BE ACCEPTABLE AS THE ORGANIC COMPONENT OF THE MIX.

INSTALLATION:
1. THE BARRIER MUST BE PLACED ACROSS THE SLOPE, ALONG THE CONTOUR.
2. EXISTING GROUND SHALL BE PREPARED SUCH THAT THE BARRIER MAY LIE NEARLY FLAT ALONG THE GROUND TO AVOID THE CREATION OF VOIDS AND BRIDGES IN ORDER TO MINIMIZE THE POTENTIAL OF WASH CUTS UNDER THE BARRIER.
3. THE BARRIER SHALL BE A MINIMUM OF 1 FOOT HIGH (AS MEASURED ON THE UPHILL SIDE) AND 2 FEET WIDE FOR SLOPES LESS THAN 5% IN GRADE AND SHALL BE WIDER TO ACCOMMODATE THE ADDITIONAL RUNOFF.
4. EROSION CONTROL MIX CAN BE INSTALLED WHERE SILT FENCE IS ILLUSTRATED ON THE DESIGN PLANS IN AREAS EXCEPT IN, BUT NOT LIMITED TO, THE FOLLOWING AREAS: WETLAND AREAS, AT POINTS OF CONCENTRATED FLOW, BELOW CULVERT OUTLET APRONS, AROUND CATCH BASINS AND CLOSED STORM SYSTEMS AND AT THE BOTTOM OF STEEP SLOPES THAT ARE MORE THAN 50 FEET FROM TOP TO BOTTOM.

EROSION CONTROL MIX BERM
NOT TO SCALE

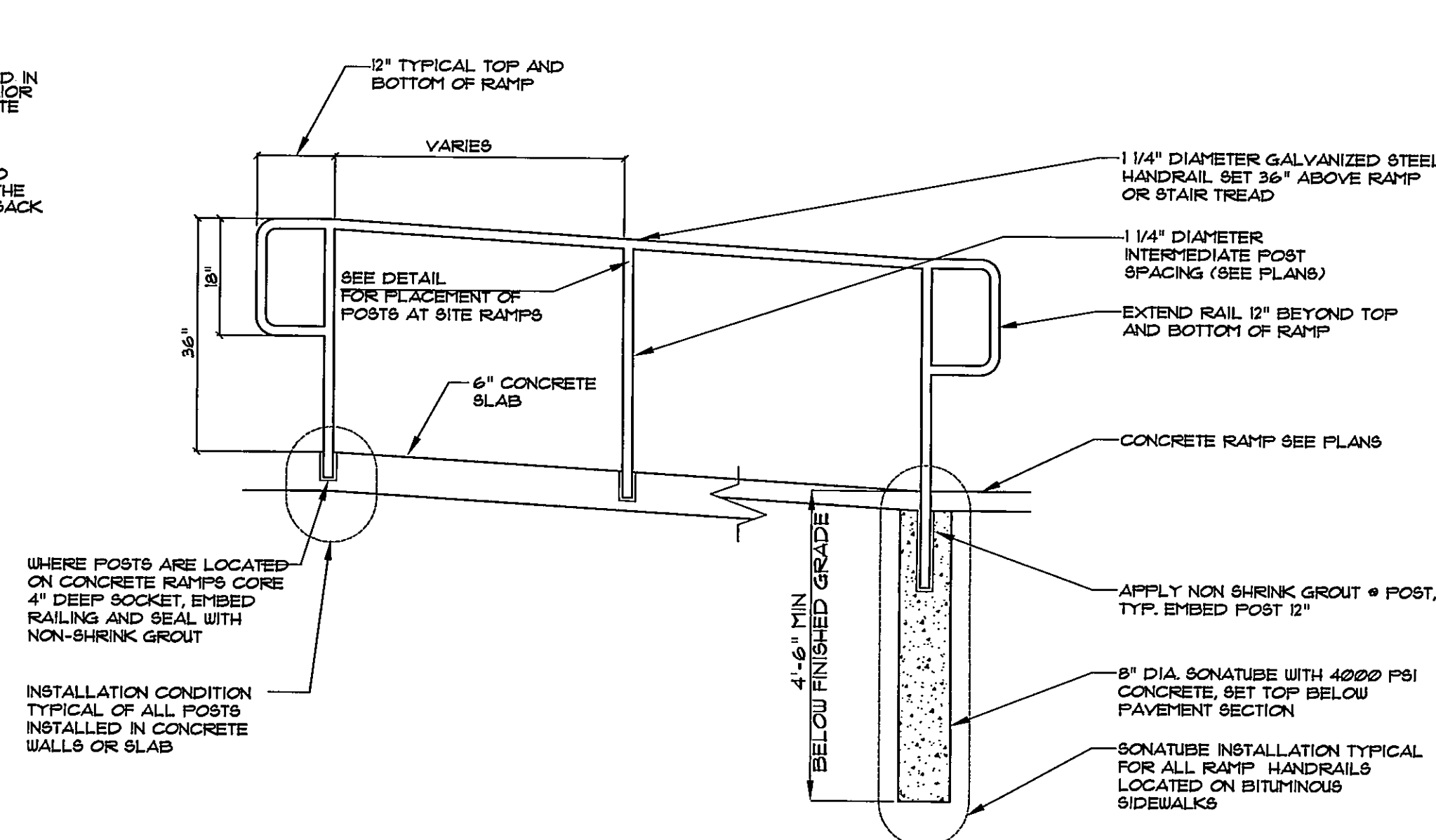


TYPICAL PAVEMENT JOINT
NOT TO SCALE



NOTES:
1. COMPACT GRAVEL SUBBASE, BASE COURSE TO 92% OF MAXIMUM DENSITY USING HEAVY ROLLERS COMPACTION.
2. CONTRACTOR SHALL SET GRADE STAKES MARKING SUBBASE AND FINISH GRADE ELEVATIONS FOR CONSTRUCTION REFERENCE.
3. CONTRACTOR MAY REPLACE BITUMINOUS PAVING SECTION WITH TWO (2) 1-1/2" LIFTS OF 12.5mm SUPERPAVE MIX. SUBMIT PAVEMENT MIX DESIGN PRIOR TO CONSTRUCTION.

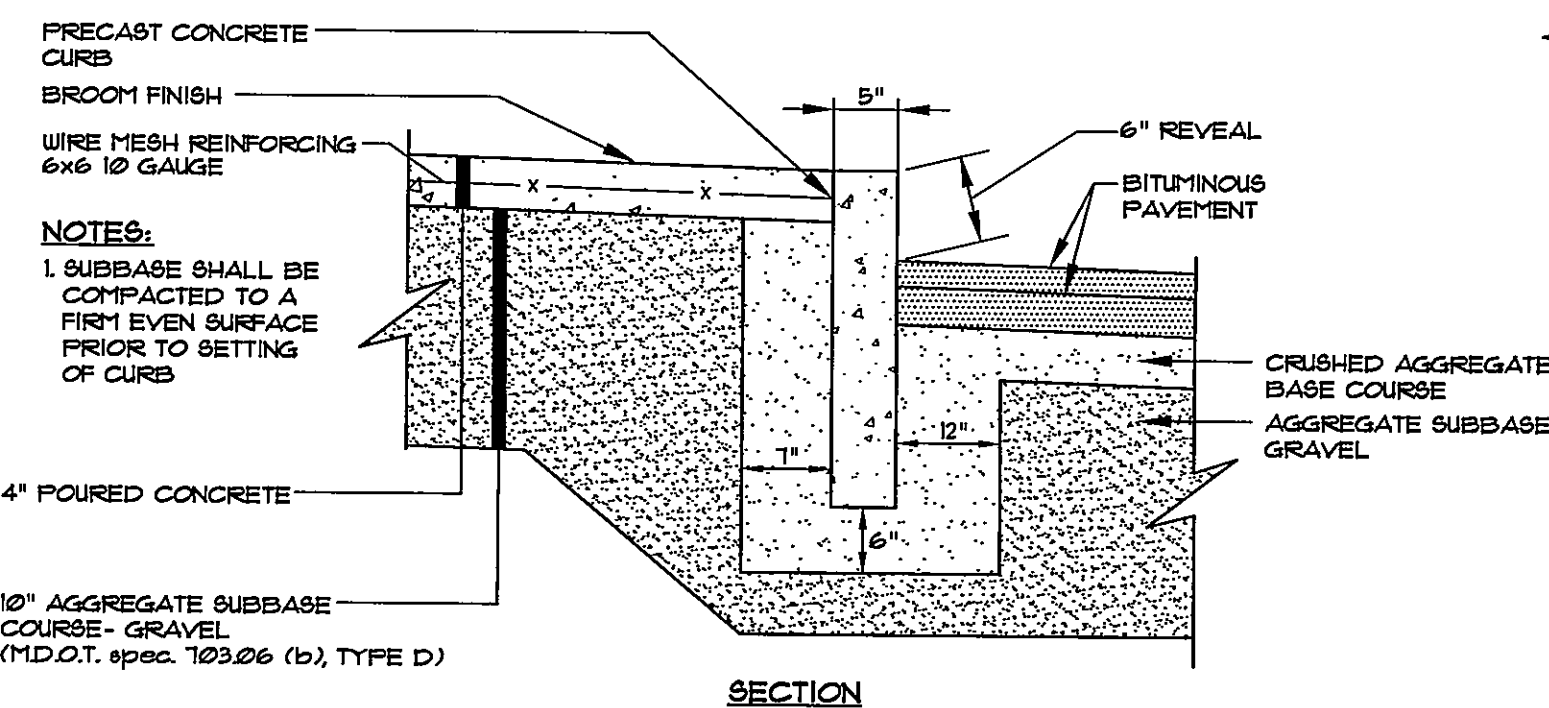
TYP. PAVED PARKING LOT SECTION
NOT TO SCALE



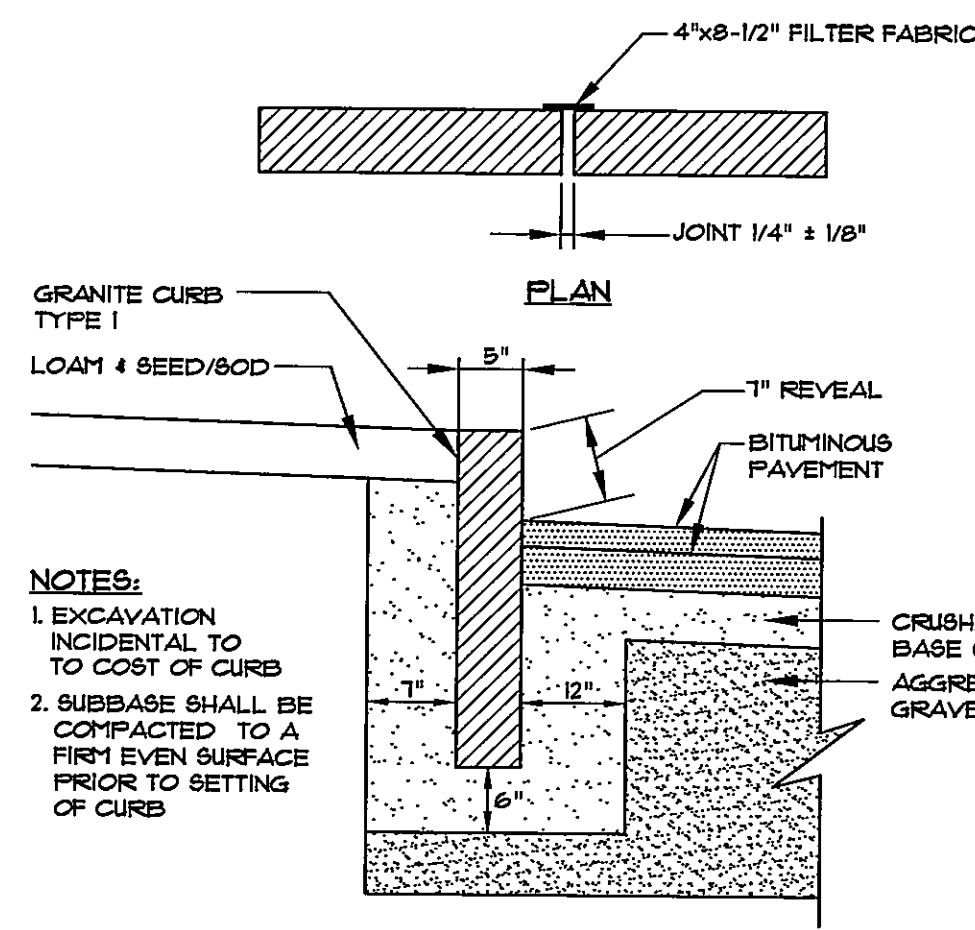
NOTES

- ADA HANDRAIL AS MANUFACTURED BY MAINE STEEL OR APPROVED EQUAL PROVIDE SHOP DRAWINGS INCLUDING MATERIALS, FABRICATION DETAILS, LAYOUT AND DIMENSIONING AND FINISH OF HANDRAILS AND PEDESTRIAN GUARDRAILS FOR ENGINEER'S APPROVAL.
- ENDS OF HANDRAIL SHALL BE EITHER ROUNDED OR RETURNED SMOOTHLY TO THE FLOOR, WALL OR POST
- ALL HAND RAILS SHALL HAVE A CIRCULAR CROSS SECTION WITH AN OUTSIDE DIAMETER OF AT LEAST 1 1/4" AND NOT GREATER THAN 2"

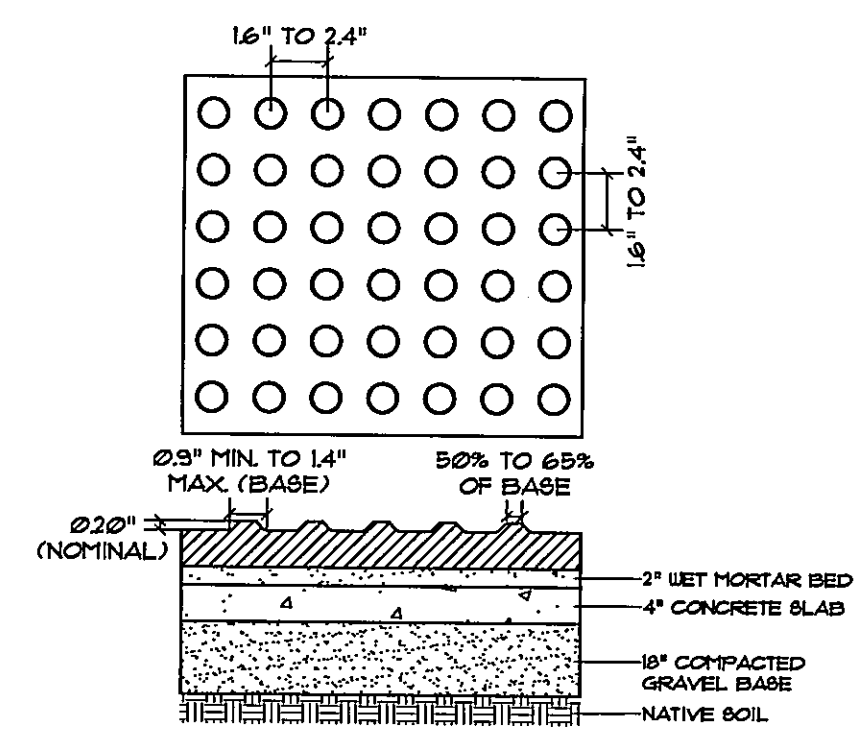
ADA HANDRAIL
NOT TO SCALE



CONCRETE SIDEWALK
NOT TO SCALE

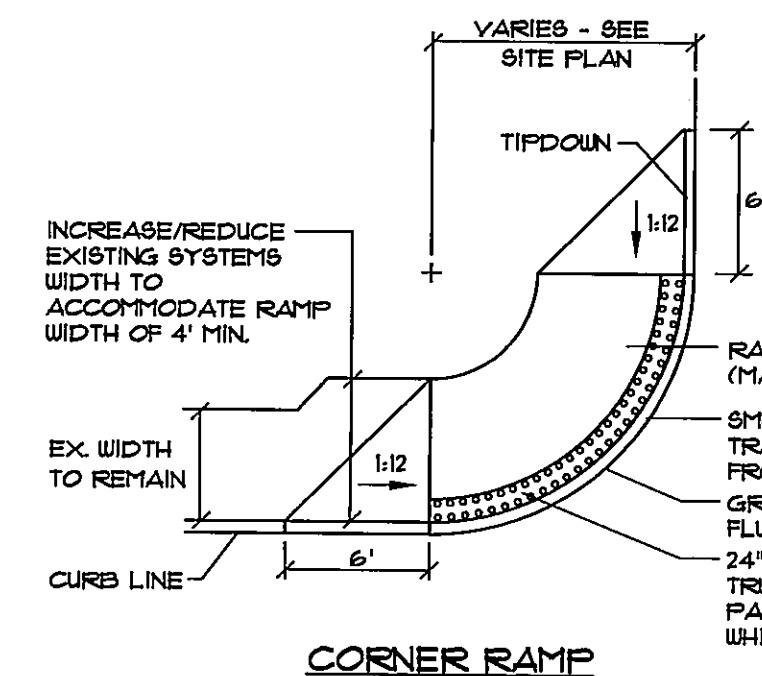


VERTICAL GRANITE CURB
NOT TO SCALE

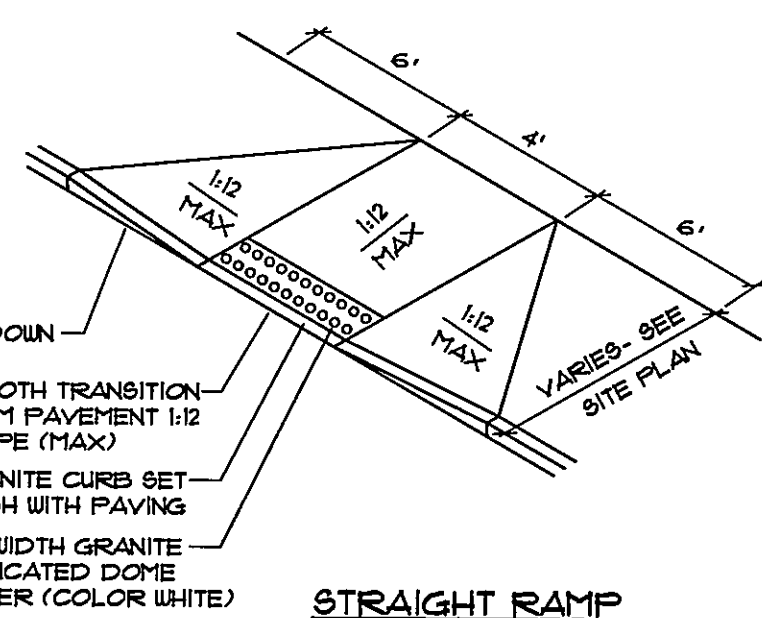


NOTE:
1. GRANITE PAVERS ARE INSTALLED IN A 1" TO 2" WET MORTAR BED OVER A CONCRETE SLAB OR COMPACTED FILL BASE. THE WET MORTAR BED IS REQUIRED TO LEVEL THE PAVERS.
2. SPACING REQUIREMENTS:
A. TRUNCATED DOME PAVERS HAVE A BASE DIAMETER OF 0.31" (7.9 MM) MINIMUM TO 1.4" (36 MM) MAXIMUM, A TOP DIAMETER OF 82% OF THE BASE DIAMETER MINIMUM TO 65% OF THE BASE DIAMETER MAXIMUM, AND A NOMINAL DOME HEIGHT OF 0.24" (6.1 MM).
B. TRUNCATED DOME PAVERS IN A DETECTABLE WARNING SURFACE HAVE A CENTER-TO-CENTER SPACING OF 16" (41 MM) MINIMUM AND 2.4" (61 MM) MAXIMUM, AND A BASE-TO-BASE SPACING OF 0.65" (16 MM) MINIMUM, MEASURED BETWEEN THE MOST ADJACENT DOMES ON THE SQUARE GRID.
C. DETECTABLE WARNING SURFACES SHALL CONTRAST VISUALLY WITH ADJACENT WALKING SURFACES EITHER LIGHT-ON-DARK OR DARK-ON-LIGHT.

TRUNCATED DOME DETAIL
NOT TO SCALE

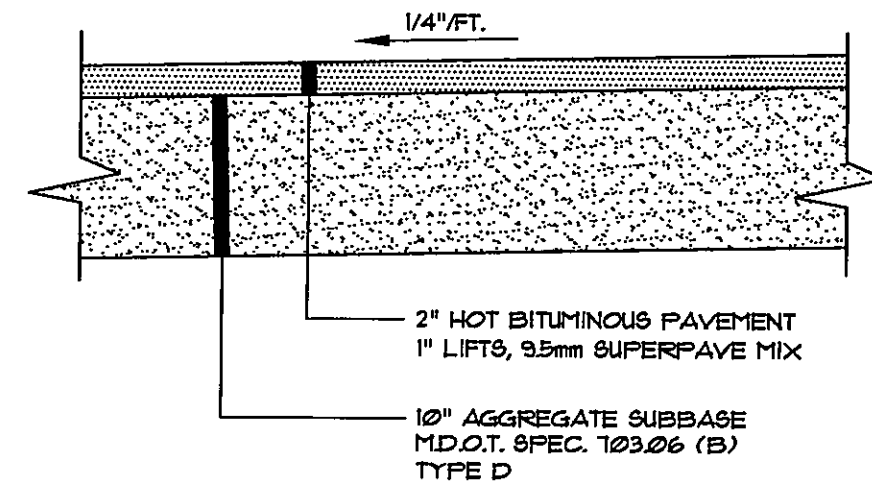


CORNER RAMP

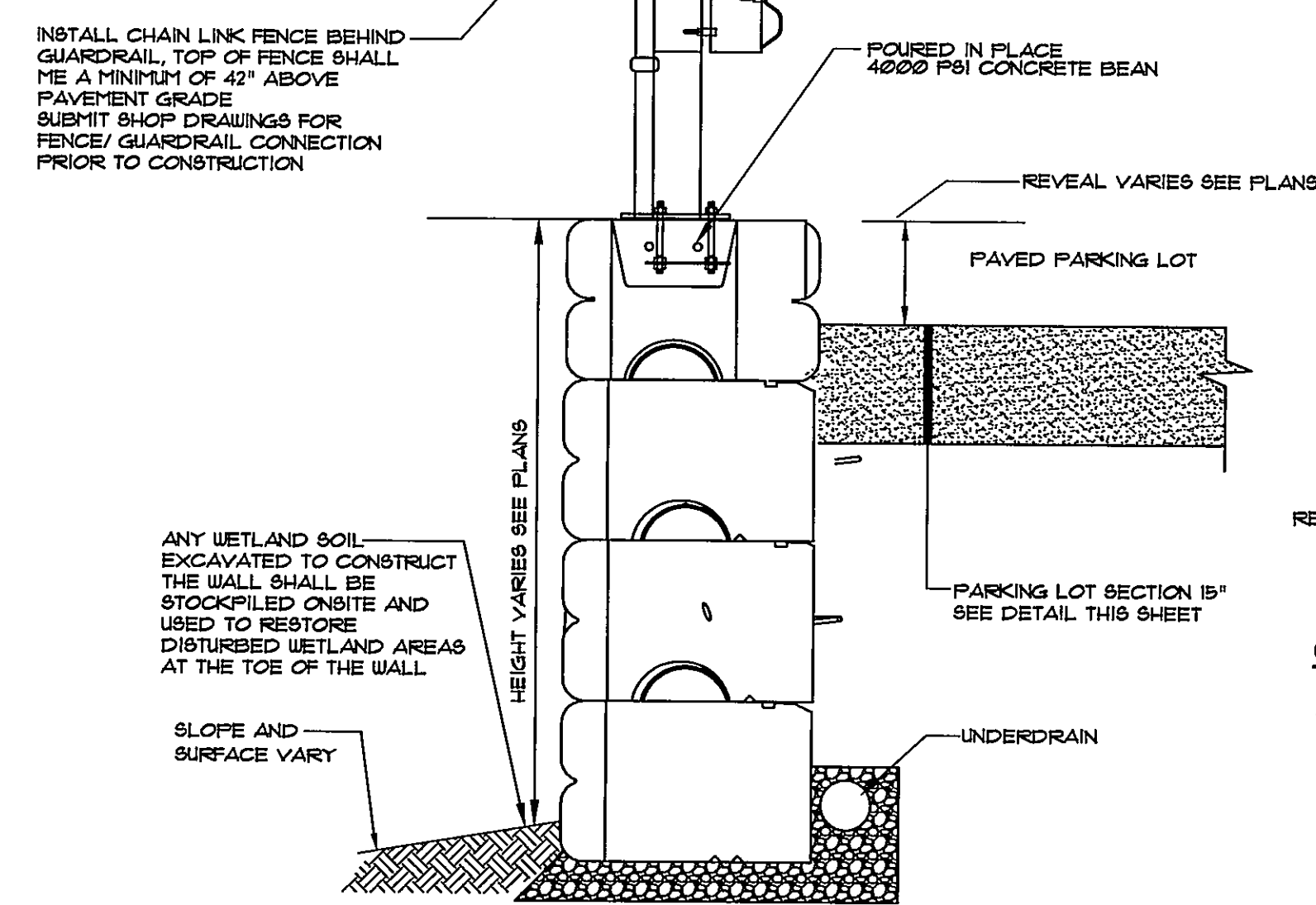


STRAIGHT RAMP

HANDICAP RAMP WITH TRUNCATED DOME BAND
NOT TO SCALE

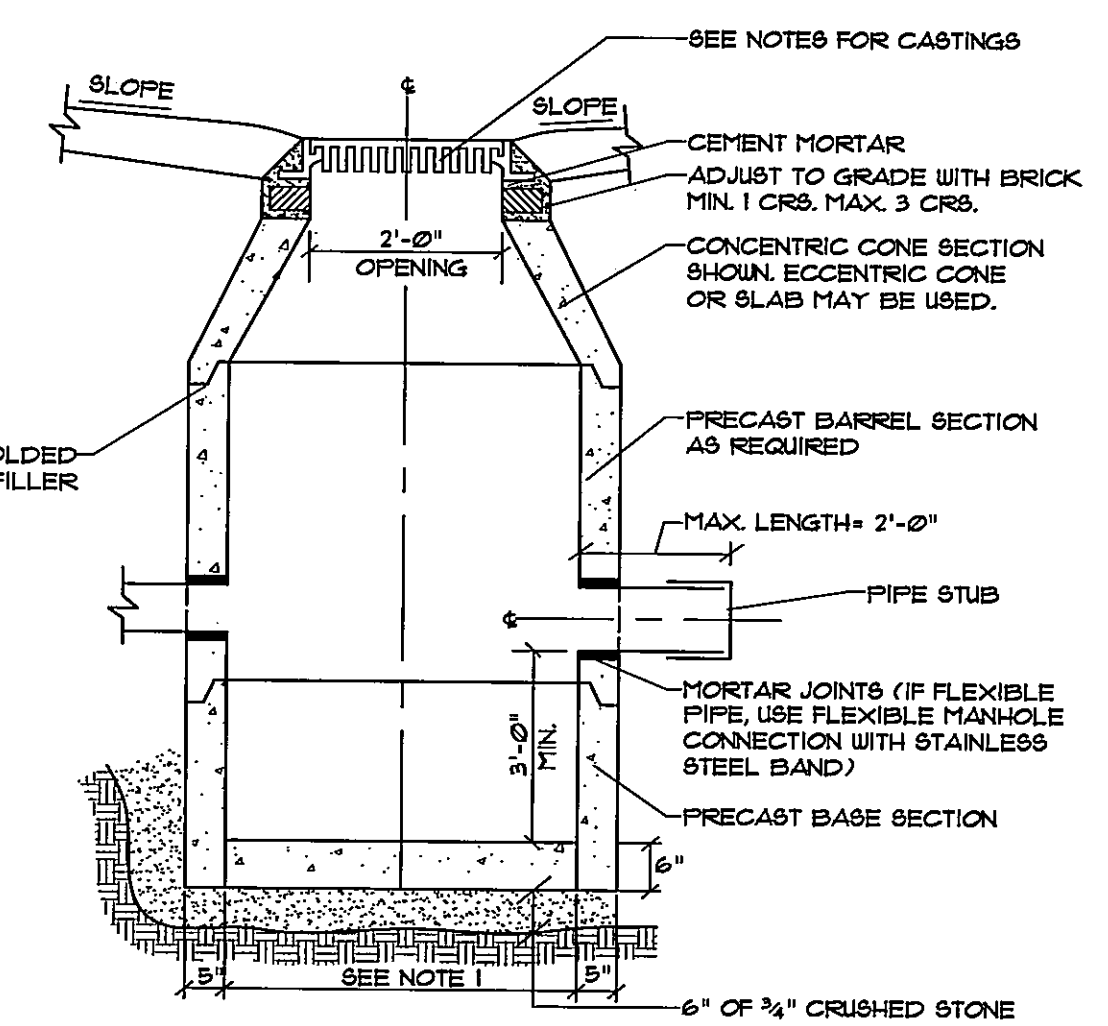


BITUMINOUS SIDEWALK
NOT TO SCALE



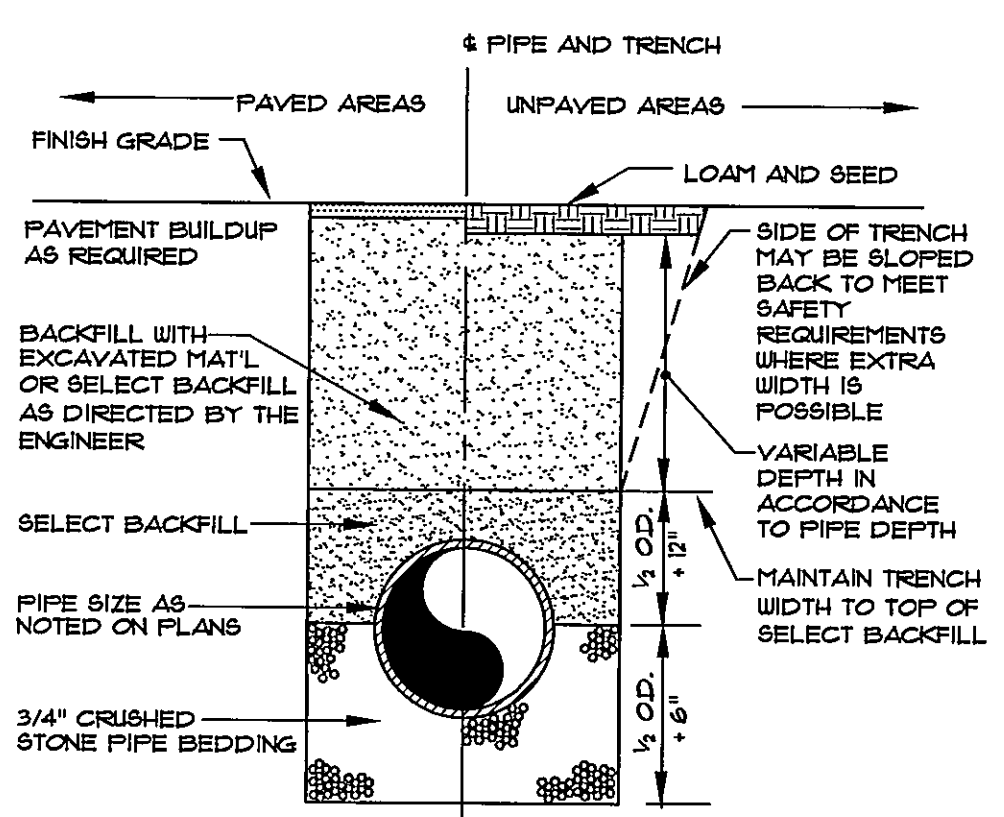
REDI ROCK GRAVITY WALL CROSS SECTION WITH GUARDRAIL
NOT TO SCALE

NOTES:
1. WALLS TO BE DESIGNED BY OTHERS, CONTRACTOR TO SUBMIT STAMPED WALLS DRAWINGS, PREPARED BY A MAINE PROFESSIONAL ENGINEER, PRIOR TO CONSTRUCTION.
2. WALL TO BE REDI-ROCK BIG BLOCK ZERO BATTER FORCE PROTECTION WALL WITH GUARDRAIL.
3. WALL DETAIL IS PRELIMINARY AND CONCEPTUAL IN NATURE. DETAIL IS PROVIDED FOR INFORMATION PURPOSES ONLY AND SHOULD NOT BE USED FOR CONSTRUCTION OF THE WALL. A SITE SPECIFIC DESIGN SHALL BE SUBMITTED BY A LICENSED PROFESSIONAL ENGINEER PRIOR TO CONSTRUCTION.



NOTES:
1. 4'-0" I.D. TYPICAL. SOME STRUCTURES MAY REQUIRE LARGER I.D. PROVIDE SHOP DRAWINGS.
2. DRAINAGE STRUCTURES TO BE DESIGNED FOR H-20 LOADING.
3. PIPE SIZES AND INVERTS AS NOTED ON PLANS.
4. CATCH BASIN FRAME AND GRATE TO BE ETHERIDGE FOUNDRY 6A246, TYPE M OR C OR APPROVED EQUAL.
5. DRAINAGE MANHOLE FRAME AND COVER TO BE ETHERIDGE FOUNDRY E2456 OR APPROVED EQUAL.

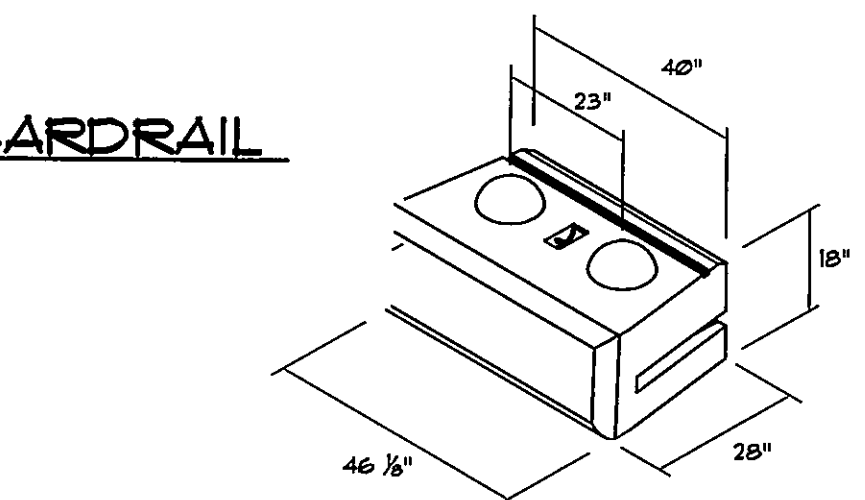
TYPICAL CATCH BASIN/DRAIN MANHOLE
NOT TO SCALE



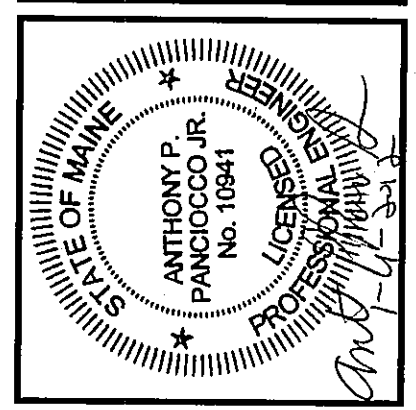
TYPICAL TRENCH SECTION
NOT TO SCALE

GUARDRAIL/WALL CONNECTION

NOTES:
1. INSTALL PER MDOT STANDARD DETAIL 606 (21) MODIFIED AS INDICATED.
2. PROVIDE SHOP DRAWING PRIOR TO CONSTRUCTION.



28" RETAINING WALL BLOCK



PROJECT NO.	DESIGN	CHKD	DRAWN
98386	APP	DLR	MAL
REVISED PEER STAFF REVIEW COMMENTS	DATE	BY	STATUS
ISSUED FOR AMENDED SITE PLAN REVIEW	11-28-11	APP	REV
12-30-2011	11-28-11	APP	REV

Sebago Technics
Engineering Experts. You Can Build On.
250 Goddard NE, Suite B
Waldport, ME 04884-0308
Tel (207) 858-0277
Tel (207) 783-6558
WWW.SEBAGOTECHNICS.COM

DETAILS
OF:
HILTON GARDEN INN
145 LEPORT SQUARE
PORTLAND, MAINE
FOR:
WIDEWATERS NEW CASTLE PORTLAND
COMPANY, LLC
5786 WIDEWATERS PARKWAY
DEWITT, NY 13214-003

DATE: 09-26-11
SCALE: AS SHOWN

SHEET 8 OF 8