

# FINISH SCHEDULE

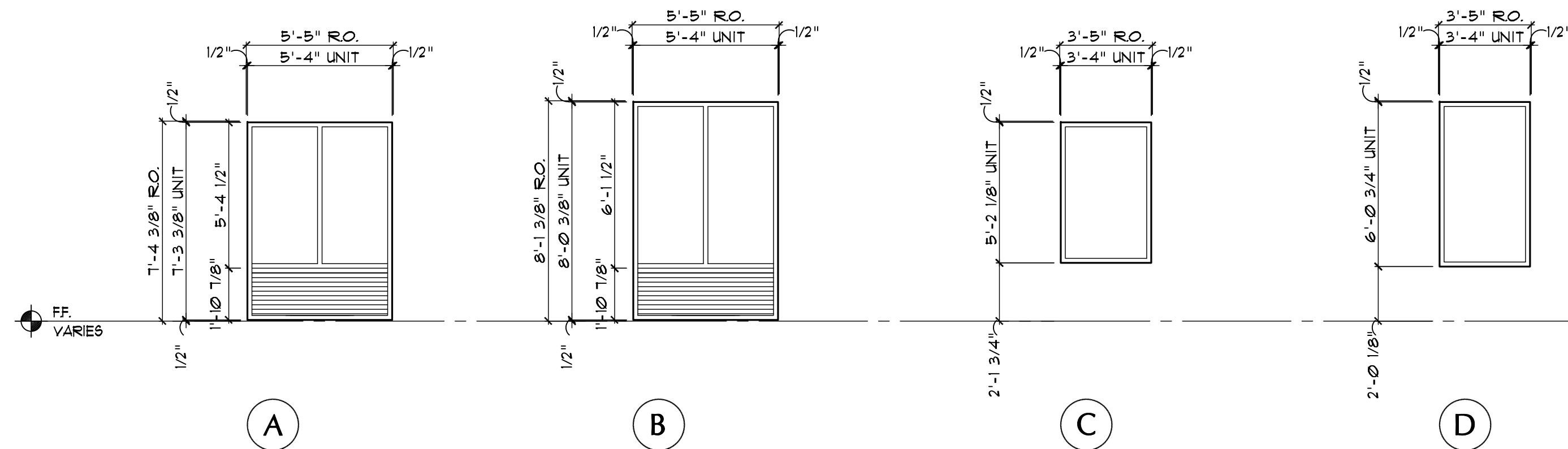
SPACE	FLOOR MATL	FINISH	BASE MATL	FIN.	WALLS MATL	FIN.	CEILING MATL	FINISH	REMARKS
115 HOUSEKEEPING	CONC	VCT	RUBBER	-	GWB	PT	GWB/ACT	PT	
116 GUEST CORRIDOR	CONC	CP 4 PD	RUBBER	-	GWB	PT	GWB/ACT	PT	SEE I.D. FOR PAINT SPEC
117 ELEVATOR MACHINE	CONC	SEALED CONC	RUBBER	-	GWB/CMU	PT	GWB	PT	CEILING IS BOTTOM OF GWB FIREPROOFING ASSEMBLY
118 DATA	CONC	VCT	RUBBER	-	GWB	PT	GWB	PT	
119 VENDING	CONC	TILE	TILE	-	GWB	PT	GWB	PT	SEE I.D. FOR PAINT AND TILE SPEC
STAIR (ALL FLOORS)	CONC/WD	CP 4 PD	RUBBER	-	GWB	PT	GWB	PT	PAINT STEEL STAIR AND RAILING, PAINT ALL SURFACES INCLUDING UNDERSIDE OF STRINGERS/RISERS/TREADS/LANDINGS

## TYP. ROOMS ON FLOORS 2 & 3

-15 HOUSEKEEPING	CONC	VCT	RUBBER	-	GWB	PT	GWB/ACT	PT	
-16 GUEST CORRIDOR	CONC	CP 4 PD	RUBBER	-	GWB	PT	GWB/ACT	PT	SEE I.D. FOR PAINT SPEC
-18 ELECTRICAL	CONC	VCT	RUBBER	-	GWB	PT	GWB	PT	
-19 VENDING	CONC	TILE	TILE	-	GWB	PT	GWB	PT	SEE I.D. FOR PAINT AND TILE SPEC

## TYPICAL GUEST ROOMS ON FLOORS 1, 2 & 3

-01 TYP. GUESTROOM*	CONC	CP 4 PD	CP 4"	-	GWB	VWC	GWB*	TEX. SPRAY	SEE I.D. FOR PAINT AND TILE SPEC
-01 TYP. GUESTROOM*	CONC	CP 4 PD	CP 4"	-	GWB	VWC	GWB	TEX. SPRAY	SEE I.D. FOR PAINT AND TILE SPEC
-02 TYP. BATHROOM	CONC	CERAMIC TILE	CERAMIC TILE	-	GWB	VWC	GWB	PT	SEE I.D. FOR PAINT AND TILE SPEC
-03 TYP. CLOSET	CONC	CP 4 PD	CP 4"	-	GWB	VWC	GWB	PT	NO KNOCKDOWN



## 2 WINDOW TYPES

SCALE 1/4"=1'-0"

# DOOR SCHEDULE

DOOR							FRAME	RATING & SPEC		REMARKS	
MARK	LOCATION	WIDTH	HEIGHT	THICK.	MATERIAL	FINISH	TYPE	MATERIAL	LABEL	HARDWARE	
TYPICAL GUEST ROOMS (REFER TO PLANS FOR MULTIPLE LOCATIONS)											
T01	GUEST ENTRY	3'-0"	6'-8"	1 3/4"	SCUD	PAINT	A	HM	20 MIN	-	ENTRY CARD LOCK, B, SEE DETAIL 1/1A2
T02	GUEST BATH	3'-0"	6'-8"	1 3/4"	SCUD	PAINT	B	WOOD	-	-	
STAIRS											
S01A	STAIR DISCHARGE	3'-0"	7'-0"	1 3/4"	HM	PAINT	C	HM	-	-	PANIC DEVICE
S01B	CORRIDOR-STAIR	3'-0"	6'-8"	1 3/4"	SCUD	PAINT	B	HM	45 MIN	-	PANIC DEVICE
S02	CORRIDOR-STAIR	3'-0"	6'-8"	1 3/4"	SCUD	PAINT	B	HM	45 MIN	-	PANIC DEVICE
LOBBY LEVEL											
115	HOUSEKEEPING	3'-0"	7'-0"	1 3/4"	SCUD	PAINT	B	HM	20 MIN	-	B
116A	CORRIDOR EXIT	3'-0"	7'-0"	1 3/4"	ALUM	PAINT	D	HM	-	-	A
116B	CORRIDOR EXIT	3'-0"	7'-0"	1 3/4"	ALUM	PAINT	D	HM	-	-	A
117	ELEVATOR MACHINE	3'-0"	7'-0"	1 3/4"	HM	PAINT	C	HM	-	-	
118	DATA	2'-8"	7'-0"	1 3/4"	SCUD	PAINT	B	HM	20 MIN	-	CARD READER, B
119	VENDING	3'-6"	7'-0"	1 3/4"	SCUD	PAINT	B	HM	20 MIN	-	ENTRY CARD LOCK, B
2ND AND 3RD FLOOR											
-15	HOUSEKEEPING	3'-6"	6'-8"	1 3/4"	SCUD	PAINT	B	HM	20 MIN	-	B
-18	ELECTRICAL	2'-8"	6'-8"	1 3/4"	SCUD	PAINT	B	HM	20 MIN	-	
-19	ELECTRICAL CLOSET	3'-0"	6'-8"	1 3/4"	SCUD	PAINT	B	HM	20 MIN	-	

## GENERAL LEGEND

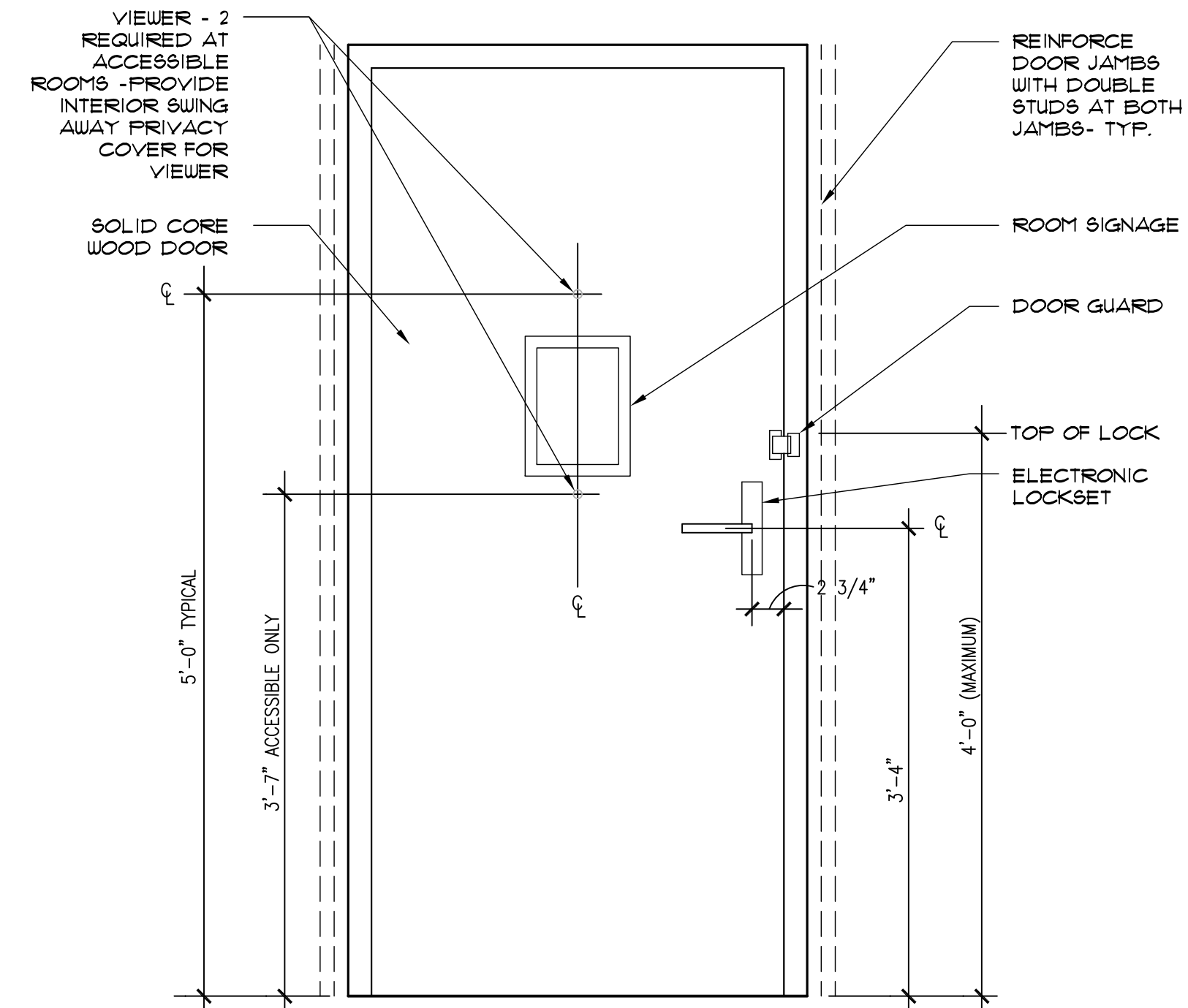
SCUD	SOLID CORE, WOOD DOOR
HM	HOLLOW METAL
ALUM	ALUMINUM STOREFRONT SYSTEM
RFID	RADIO FREQUENCY IDENTIFICATION

## REMARKS LEGEND

- "CARD READER" IS A REMOTE RFID CARD SWIPE THAT IS ELECTRONICALLY WIRED TO THE DOOR FRAME RELEASING THE STRIKE UPON ACTIVATION. THE STRIKE IS TO FAIL SAFE IN THE OPEN POSITION UPON ACTIVATION OF THE FIRE ALARM SYSTEM
- "ENTRY CARD LOCK" IS A STAND ALONE, BATTERY OPERATED RFID CARD LOCKSET INTEGRATED INTO THE TRIM OF THE DOOR HARDWARE

## GENERAL NOTES

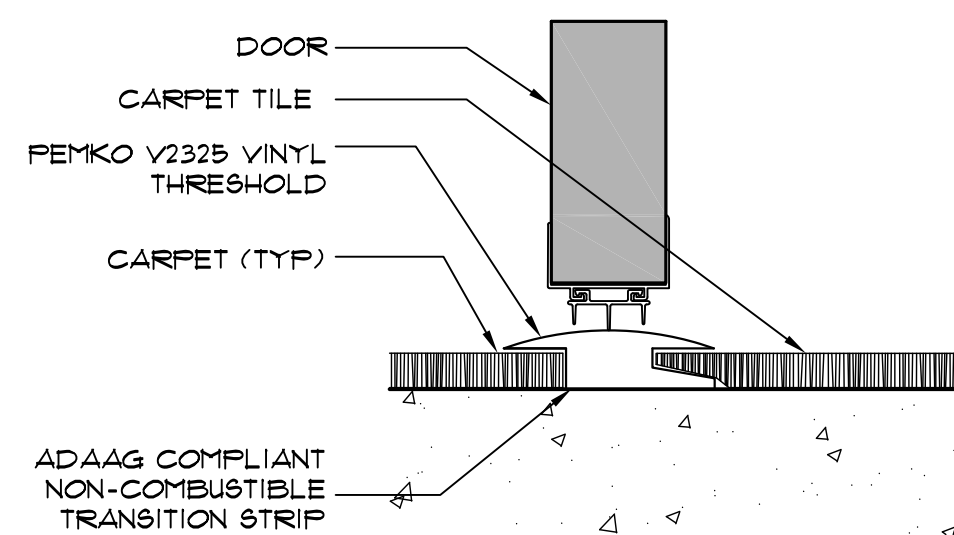
- REFER TO SPECIFICATION SECTION 8100 FOR DOOR HARDWARE SPECIFICATIONS
- TOPS AND BOTTOMS OF WEATHER EXPOSED METAL DOORS TO BE PAINTED
- PAINT COLOR OF EXTERIOR HM DOORS AND FRAMES TO MATCH THE ADJACENT WALL COLOR



## 1 TYPICAL GUEST ENTRY

SCALE: NOT TO SCALE

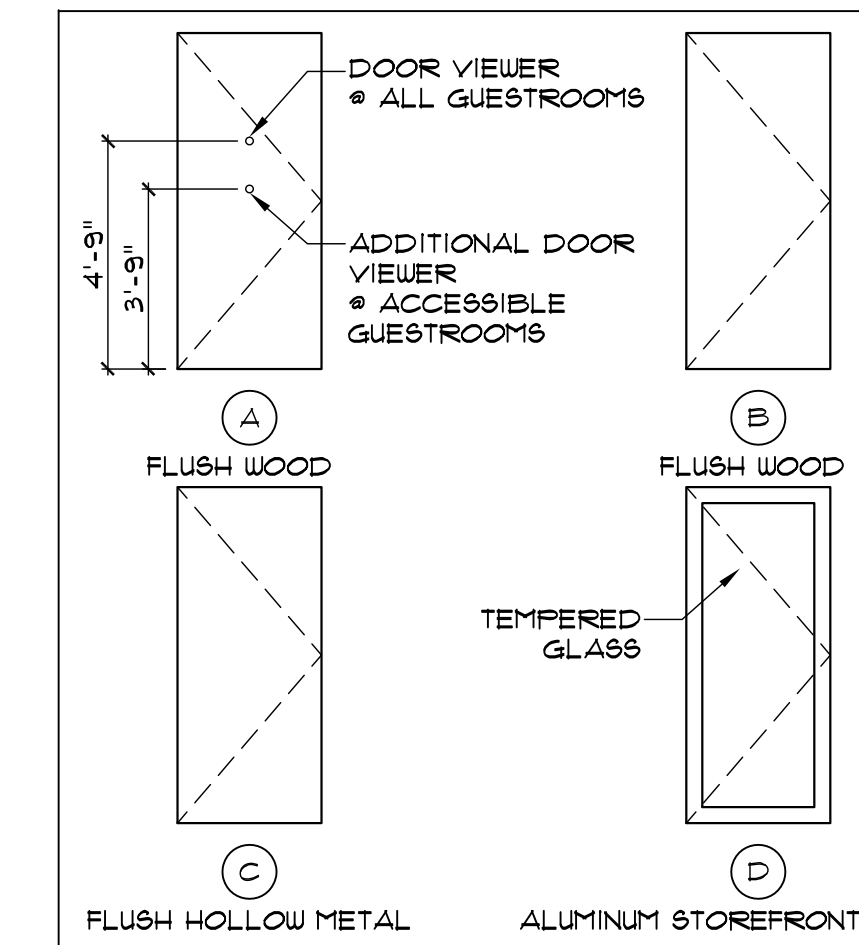
NOTE: VERIFY ALL DIMENSIONS WITH MANUFACTURER/ INDUSTRY STANDARDS/ APPLICABLE CODES



## 1A TYPICAL GUEST ENTRY

SCALE: NOT TO SCALE

## DOOR TYPES



PROJECT

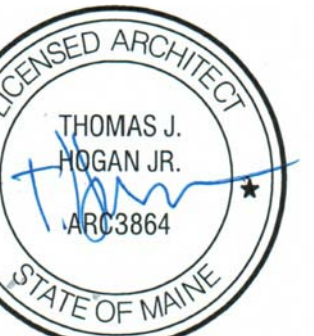
PORTLAND  
HILTON GARDEN  
INN ADDITION

LOCATION

PORTLAND  
145 JETPORT BLVD  
PORTLAND, MAINE 04102

ARCHITECT

**hc**  
hogan campis architecture  
1425 DUTCH VALLEY PL STUDIO B ATLANTA GA 30324  
404 685 8868 V 404 685 8878 F WWW.HCARCH.NET



STAMP

ISSUED FOR: DATE:

REVIEW

PRICING JULY 20, 2012

PERMITTING JAN. 30, 2013

CONSTRUCTION

REVISIONS

THIS DRAWING IS THE PROPERTY OF HC ARCHITECTURE, INC. AND IS NOT TO BE REPRODUCED OR COPIED IN WHOLE OR IN PART. IT IS ONLY TO BE USED FOR THE PROJECT SPECIFICALLY IDENTIFIED HEREIN AND IS NOT TO BE USED ON ANY OTHER PROJECT. IT IS TO BE RETURNED UPON REQUEST. SCALES AS STATED HEREIN ARE VALID ON THE ORIGINAL DRAWING. THE DIMENSIONS OF WHICH ARE 30x42 INCHES.

JOB NO.

0479.000

DRAWING TITLE

DOOR, WINDOW,  
& FINISH  
SCHEDULES  
AND DETAILS

SHEET NO.

5A-2