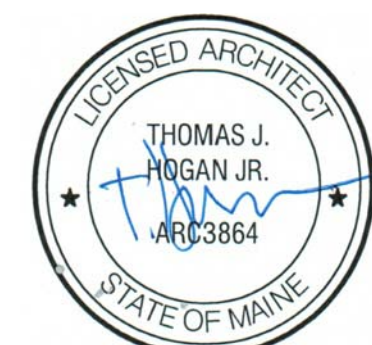


PORTLAND HILTON GARDEN INN ADDITION

PORTLAND
145 JETPORT BLVD
PORTLAND, MAINE 04102



hogan campis architecture
1425 DUTCH VALLEY PL. STUDIO B ATLANTA GA 30324
404 685 8868 V 404 685 8878 F WWW.HCARCH.NET



ISSUED FOR: DATE:

REVIEW JULY 20, 2012

PRICING JAN 30, 2013

PERMITTING

CONSTRUCTION

REVISIONS

THIS DRAWING IS THE PROPERTY OF HC ARCHITECTURE, INC. AND IS NOT TO BE REPRODUCED OR COPIED IN WHOLE OR IN PART. IT IS ONLY TO BE USED FOR THE PROJECT SPECIFICALLY IDENTIFIED HEREIN AND IS NOT TO BE USED ON ANY OTHER PROJECT. IT IS TO BE RETURNED UPON REQUEST. SCALES AS STATED HEREIN ARE VALID ON THE ORIGINAL DRAWING. THE DIMENSIONS OF WHICH ARE 30x42 INCHES.

JOB NO.

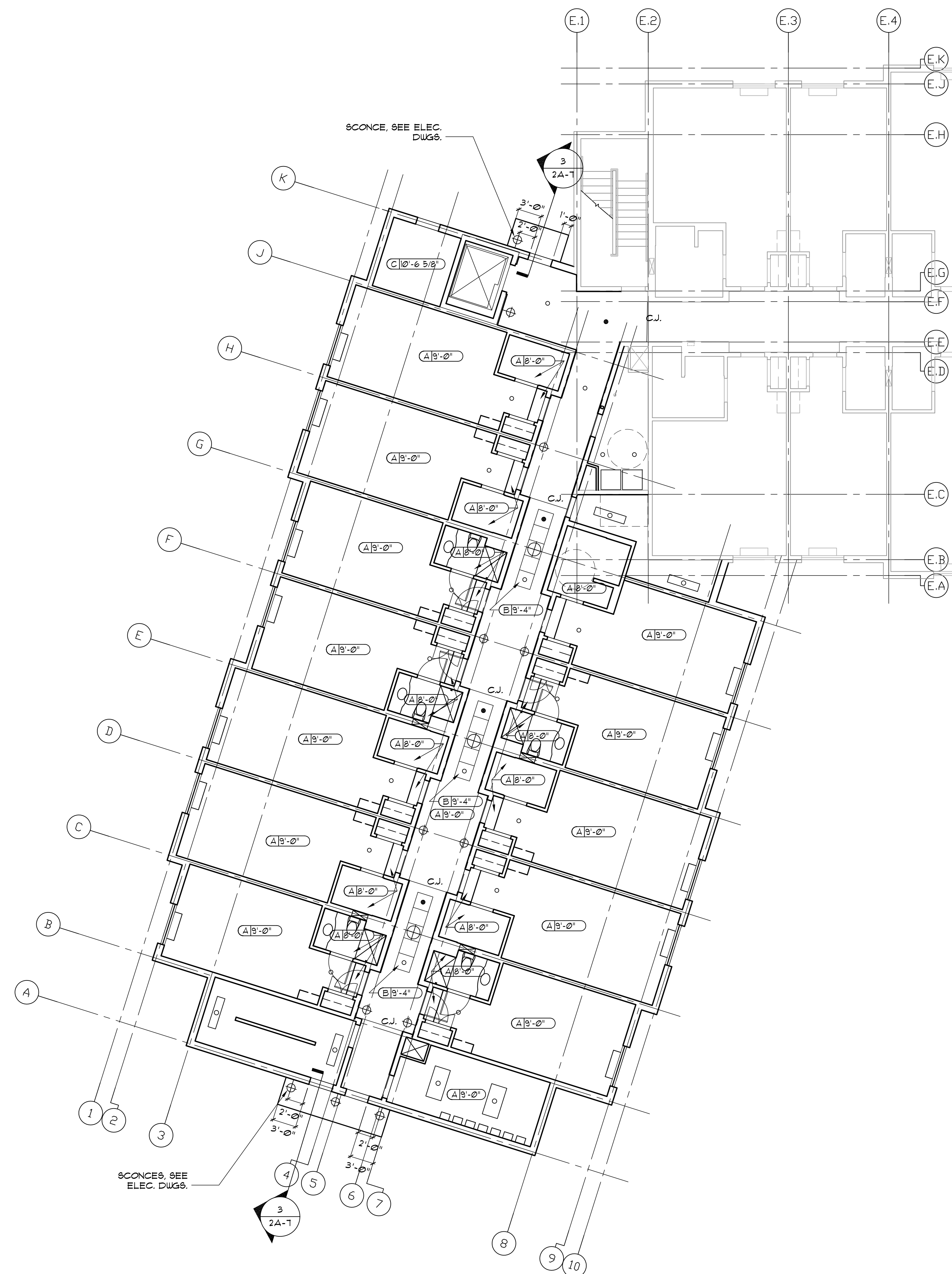
0479.000

DRAWING TITLE

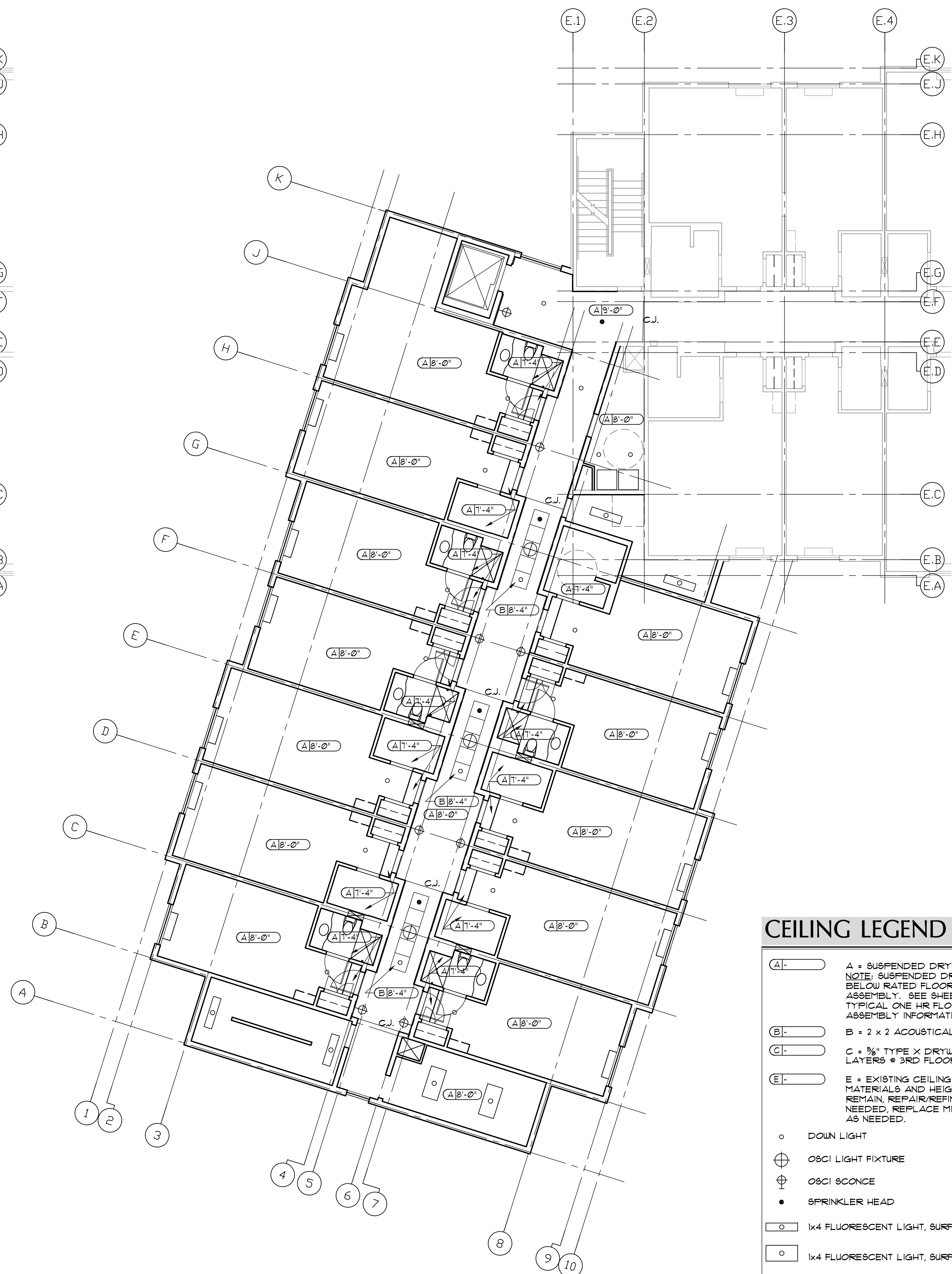
LOBBY, 2ND, AND 3RD LEVEL REFLECTED CEILING PLANS

SHEET NO.

2A-2



1 LOBBY LEVEL RCP
SCALE 1/8"=1'-0"



2 2ND & 3RD LEVEL RCP
SCALE 1/8"=1'-0"

CEILING LEGEND

- A** - SUSPENDED DRYWALL
NOTE: SUSPENDED DRYWALL BELOW RATED FLOOR/CEILING ASSEMBLY. SEE SHEET 3A-1 FOR TYPICAL ONE HR FLOOR CEILING ASSEMBLY INFORMATION
- B** - 2 x 2 ACOUSTICAL TILE
- C** - 5/8" TYPE X DRYWALL (2 LAYERS @ 3RD FLOOR CEILING)
- E** - EXISTING CEILING MATERIALS AND HEIGHT TO REMAIN. REPAIR/REFINISH AS NEEDED. REPLACE MISSING ACT AS NEEDED.
- DOWN LIGHT
- ⊕ OBCI LIGHT FIXTURE
- ⊕ OBCI SCENCE
- SPRINKLER HEAD
- 1x4 FLUORESCENT LIGHT, SURFACE MOUNTED
- 1x4 FLUORESCENT LIGHT, SURFACE MOUNTED
- 2x2 FLUORESCENT LIGHT, RECESSED
- 2x4 FLUORESCENT LIGHT, RECESSED
- ⊗ SUPPLY AIR GRILLE
- ⊗ CIRCULAR DIFFUSER
- ⊗ RETURN AIR GRILLE

NOTE: REFER TO I.D. DRAWINGS FOR FINISH REQUIREMENTS AT NEW AND EXISTING CEILING CONDITIONS INCLUDING EXPOSED STRUCTURE.