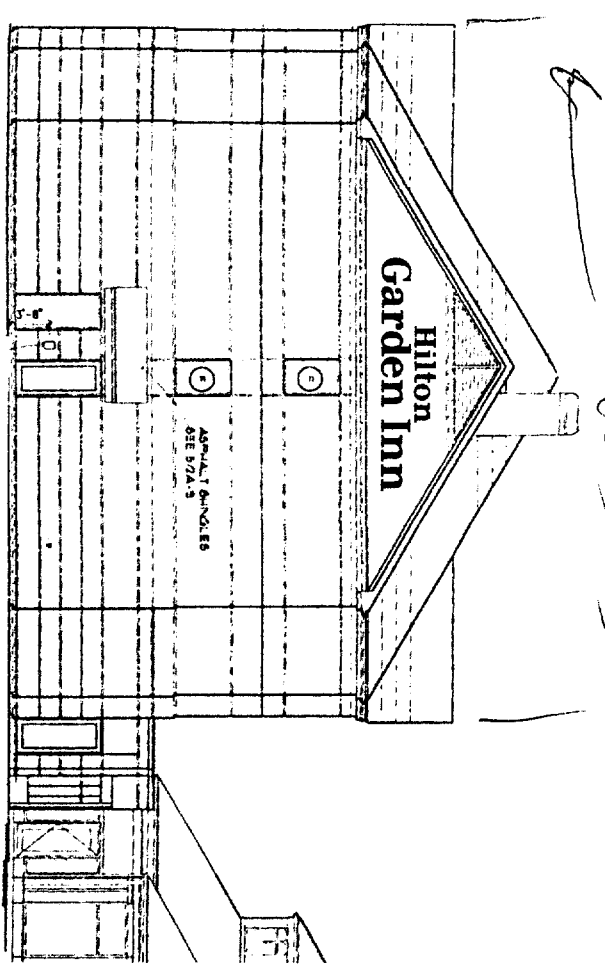
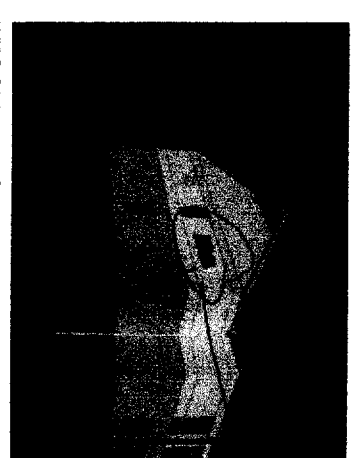


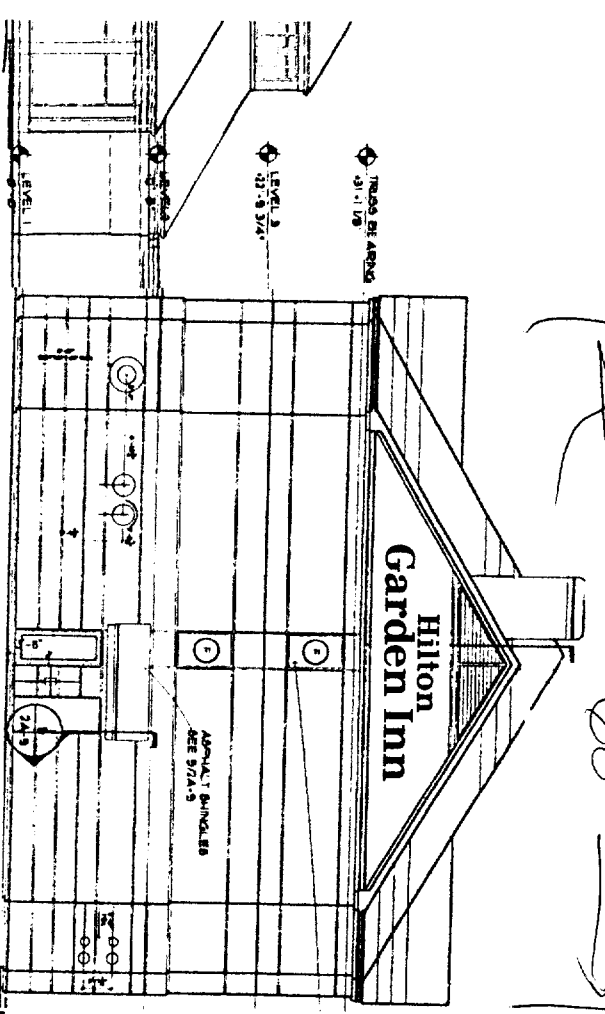
9/5/04



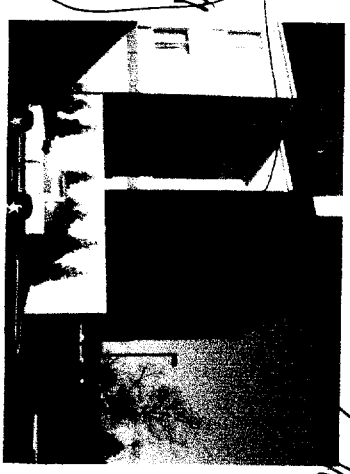
WEST ELEVATION  
NTS



WEST ELEVATION Existing Signage



EAST ELEVATION  
NTS



EAST ELEVATION Existing Signage



SCALE: 1/4" = 1'

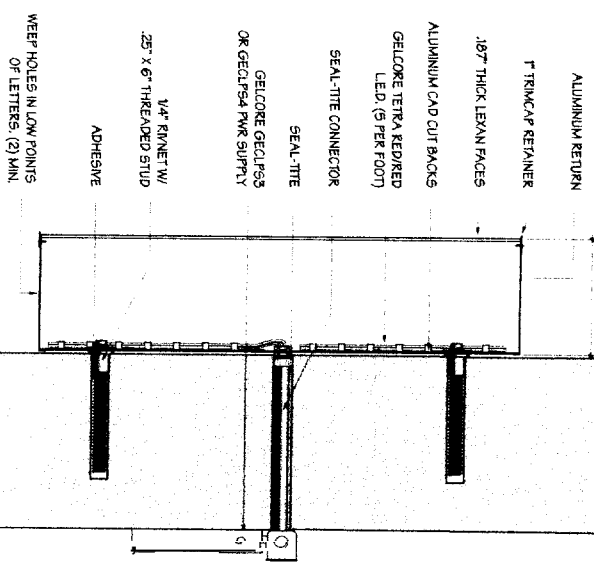


$B \times C = 90.29 \times 2 = 180.58 \text{ ft}$

Authorized Signature \_\_\_\_\_

Approval Date \_\_\_\_\_

Note: For preliminary design purposes only. Accurate field survey and dimension verification required before beginning construction.



LED LETTER SECTION (NTS)

NOTE: For graphic intent only.

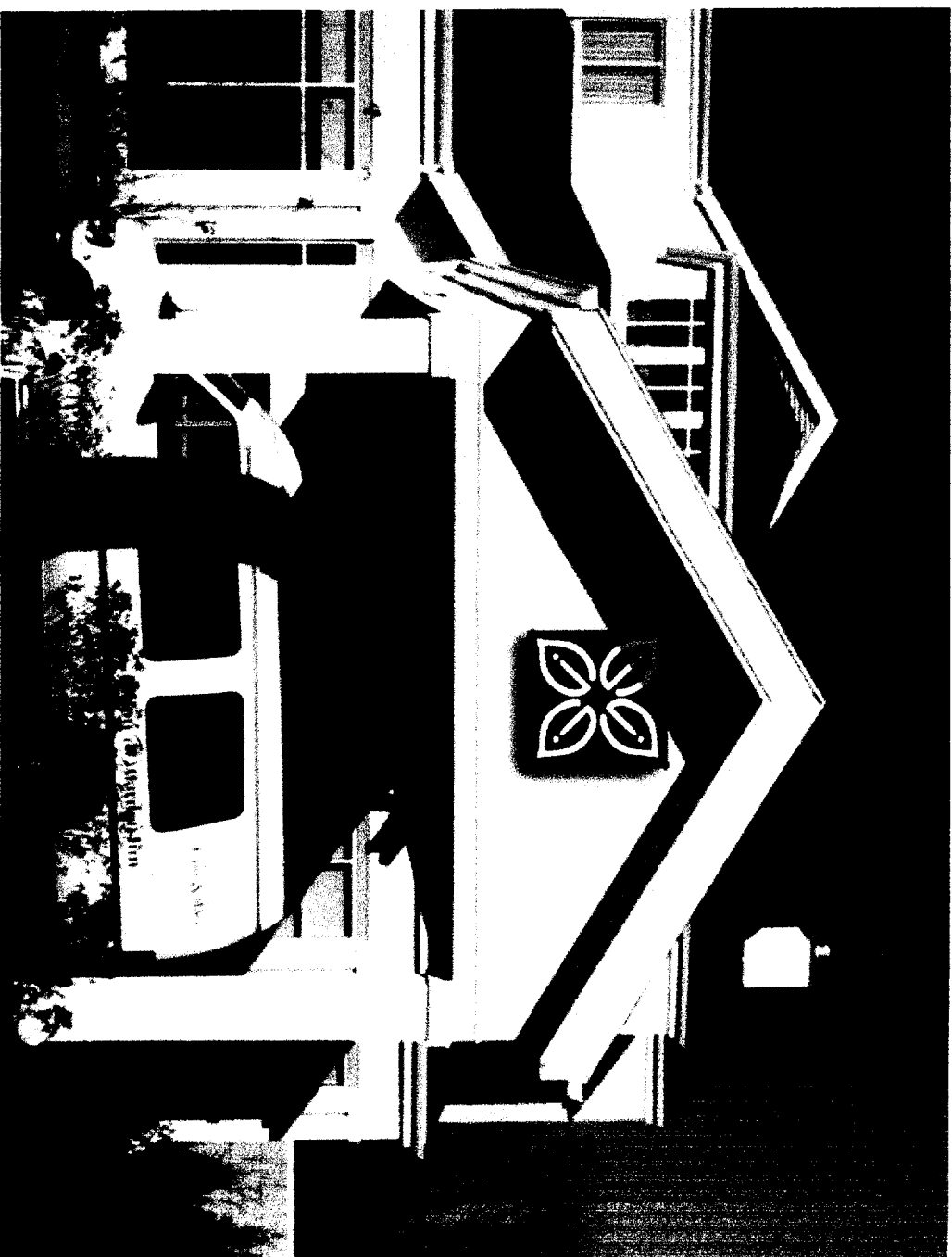


Title	Hilton Garden Inn		
Location	145 King Pine Blvd. Portland, ME		
Customer	Hilton Garden Inn		
Scale	A5 Noted	Acct Exec	RB
Design Phase	7		
Print History	Artist	Date	Description
9002JL	JL	7/27	
Phase	2 & 4		
Sign Type	HG-ICL30S		
Description	30" Red LED Channel Letters		
Location	East and West Elevations		
Sizes	See Chart		
Colors	Red faces & trimcap w/Silver returns		
Materials	Aluminum construction w/ red lexan faces, Red Gelcore LEDs.		
Mounting	Stud (See print for details)		

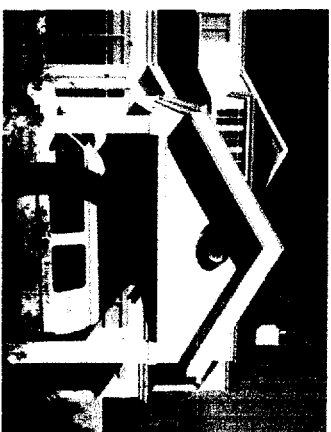
**LAURETANO**  
SIGN GROUP

WORLDWIDE  
1 Tremco Drive,  
Terryville, CT 06786  
860.582.0233 | fax 860.583.0949  
signs@lauretano.com  
www.lauretano.com

This drawing contains original design elements created by Lauretano Sign Group, Inc., and subject to all the applicable copyright laws. This drawing is the property of Lauretano Sign Group, Inc., and it is intended for your review and approval purposes only. It is not to be reproduced, copied, transmitted by electronic media, or exhibited in any fashion or shown to anyone outside your organization without the expressed written consent of Lauretano Sign Group, Inc.



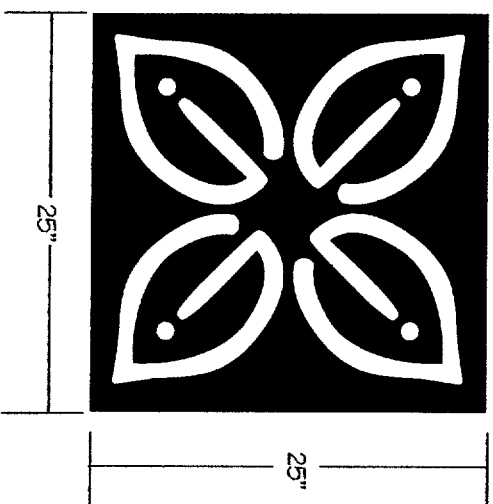
New Signage



PORTE-COCHERE Existing Signage

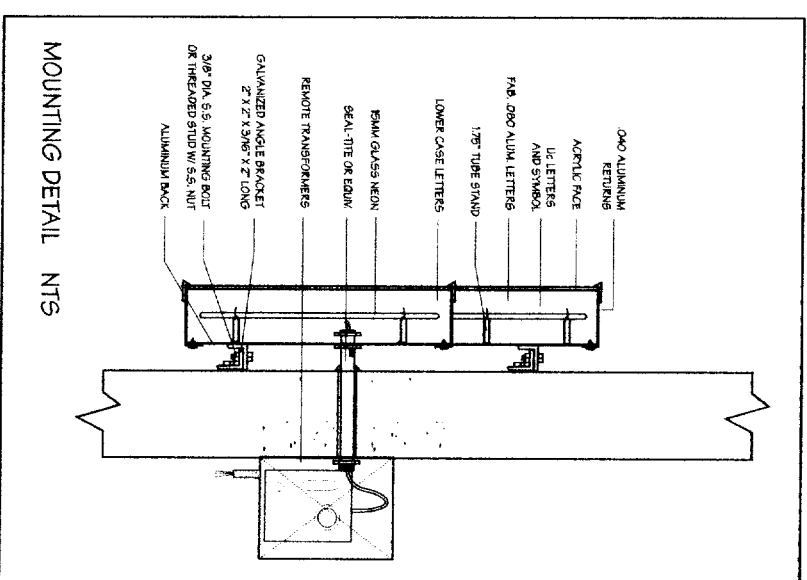
Authorized Signature \_\_\_\_\_

Approval Date \_\_\_\_\_



Line 6 HGI-W2525 Florette logobox  
SCALE: 1" = 1'

*OK*



Note: For preliminary design purposes only.  
Accurate field survey and dimension verification  
required before beginning construction.

NOTE: For graphic intent only.



Title	Hilton Garden Inn		
Location	145 King Pine Blvd. Portland, ME		
Customer	Hilton Garden Inn		
Scale	As Noted	Acct Exec	RB
Design Phase	7		
Print History	Artist	Date	Description
9003JL	JL	7/27	

Phase	6		
Sign Type	HGI-W2525		
Description	Florette on Porte-cochere		
Location	East Elevation Porte-cochere		
Sizes	25" x 25" (4.3 sq. ft.)		
Colors	8.1/2" deep box Red and White face		
Materials	Metallic silver returns Aluminum construction w/ Lexan faces and PSV vinyl applied		
Mounting	Angle bracket		

**LAURETANO**  
SIGN GROUP  
W O R L D W I D E

1 Tremco Drive,  
Terryville, CT 06786  
860.582.0233 | fax 860.583.0949  
signs@lauretano.com  
www.lauretano.com

This drawing contains original design elements created by Lauretano Sign Group, Inc., and subject to all the applicable copyright laws. This drawing is the property of Lauretano Sign Group, Inc., and it is intended for your review and approval purposes only. It is not to be reproduced, copied, transmitted by electronic media, or exhibited in any fashion or shown to anyone outside your organization without the expressed written consent of Lauretano Sign Group, Inc.