

STARBUCK NOTE
ALL STEEL STRUCTURES SHALL BE DESIGNED BY THE STRUCTURAL
STEEL FABRICATOR IN ACCORDANCE WITH THE 1989 BOCA NATIONAL
BUILDING CODE. THE FABRICATOR SHALL BE RESPONSIBLE FOR
100 PSF LIVE LOAD, COORDINATE ALL DETAILS WITH ARCHITECTURAL
DRAWINGS AND SUBMIT FABRICATION DRAWINGS FOR REVIEW, DESIGN
AND APPROVAL BY A REGISTERED PROFESSIONAL ENGINEER IN
THE STATE OF MAINE.

75 York Street
Portland, ME 04101-4701
Tel: 207-879-1838
Fax: 207-879-1838
www.beckerstructural.com
info@beckerstructural.com

REVISION	DESCRIPTION	DATE
1	CONCRETE DRAWINGS RELATED FOR CONSTRUCTION	4/22/04
2	REVISED	FEB 23, 2004

PHILLIP J. DOUGHTY ASSOC. ARCHITECTS
Architects 362 U.S. Route One, Falmouth, Maine 04105 • 207.781.5346

APPROVED: _____
CHECKED: _____
DESIGNED BY: _____
DATE: FEB 23, 2004

SCALE: 1/8" = 1'-0"

EASTERN EXPANSION OF BAGGAGE CLAIM FACILITY
PORTLAND INTERNATIONAL AIRPORT, PORTLAND, MAINE

SECOND FLOOR FRAMING PLAN

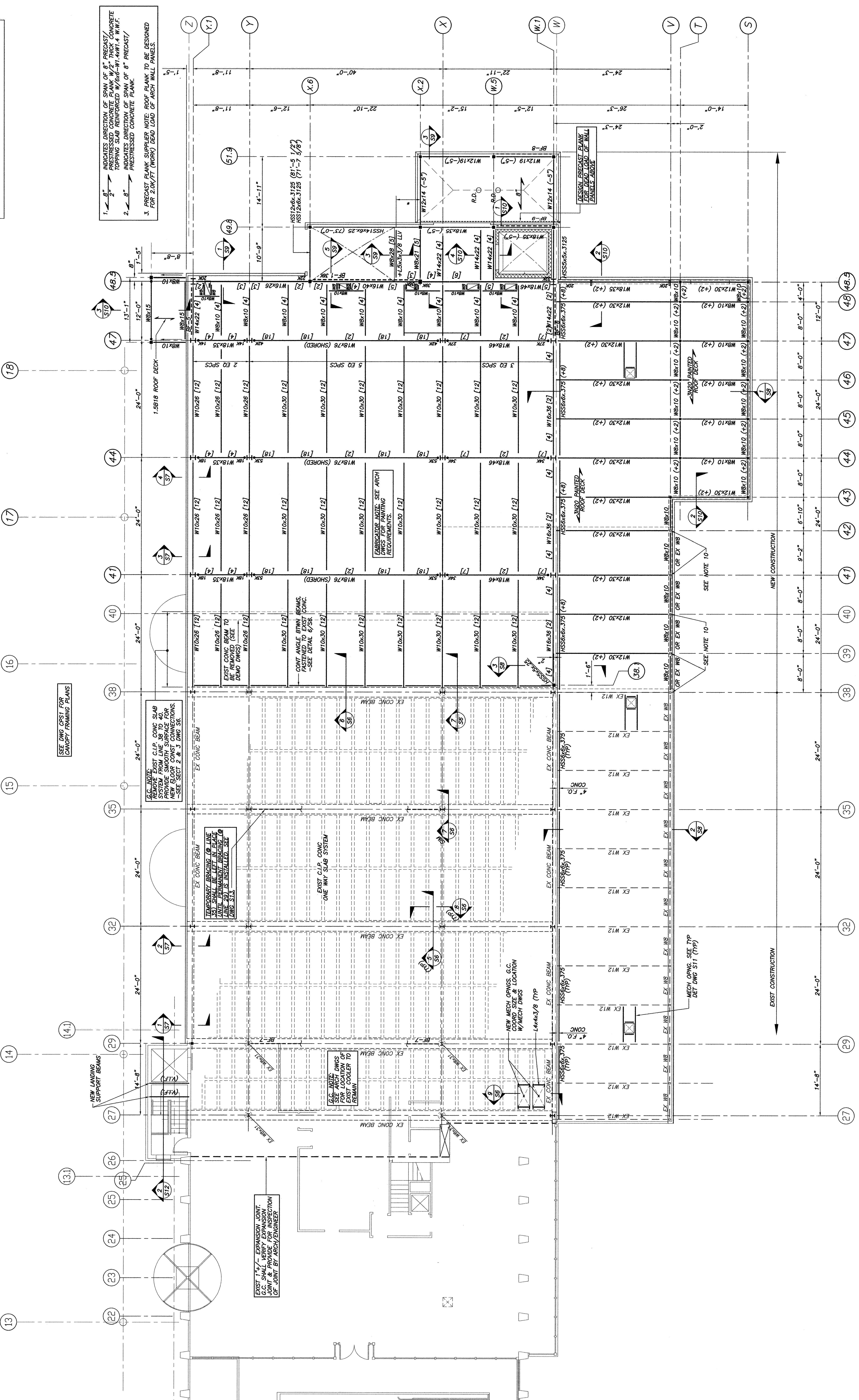
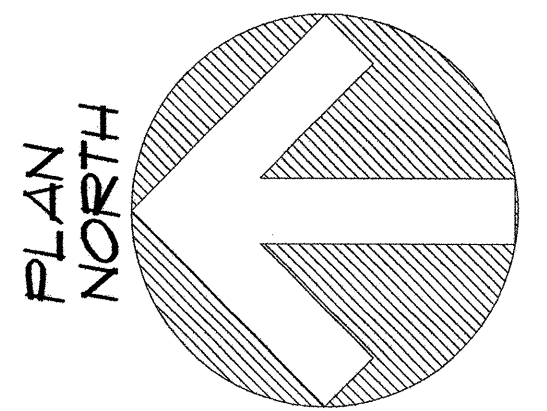
PHILLIP J. DOUGHTY ASSOC. ARCHITECTS
Architects 362 U.S. Route One, Falmouth, Maine 04105 • 207.781.5346

APPROVED: _____
CHECKED: _____
DESIGNED BY: _____
DATE: FEB 23, 2004

SCALE: 1/8" = 1'-0"

EASTERN EXPANSION OF BAGGAGE CLAIM FACILITY
PORTLAND INTERNATIONAL AIRPORT, PORTLAND, MAINE

SECOND FLOOR FRAMING PLAN



- NOTES:
- FLOOR CONSTRUCTION CONSISTS OF A 5" NORMAL WEIGHT CONCRETE FILL OVER 2" POLISHED METAL DECK.
 - PROVIDE 6"x6" W2x4x2.9 W.M.F.
 - TOP OF STEEL EL. 72'-7" UNO.
 - (12) INDICATES NUMBER OF 3/4"x4" LG HEADED SHEAR STUDS SPACED @ 24" O.C. AT ALL STEEL MEMBERS SUPPORTING FLOOR SLABS WHERE SPECIFIC NUMBER IS NOT INDICATED ON DRAWING. (TYP THROUGHOUT).
 - ELEVATIONS DIM S13.
 - INDICATES BRACING. SEE BRACING.
 - INDICATES MOMENT CONNECTION. SEE DETAIL DWG S14.
 - WIPERS TO BE PROVIDED AROUND ALL FLOOR PENETRATIONS.
 - PER TYPICAL DETAIL DWG S14.
 - FOR COLUMN SIZES, SEE DWG S14.
 - VERIFY CONDITION OF CONN TO EXIST COL IN FIELD PRIOR TO CONST. REFER CONN WITH ENGINEER PRIOR TO CONST.

SECOND FLOOR FRAMING PLAN
1/8"=1'-0"

THIS DRAWING IS AN INSTRUMENT OF SERVICE AND SHALL REMAIN THE PROPERTY OF PHILLIP J. DOUGHTY ASSOCIATES, ARCHITECTS. IT IS TO BE USED ONLY FOR THE PROJECT AND SITE SPECIFICALLY IDENTIFIED ON THIS DRAWING. IT IS NOT TO BE REPRODUCED OR TRANSMITTED IN ANY FORM OR BY ANY MEANS, ELECTRONIC OR MECHANICAL, INCLUDING PHOTOCOPYING, RECORDING, OR BY ANY INFORMATION STORAGE AND RETRIEVAL SYSTEM, WITHOUT THE WRITTEN PERMISSION OF PHILLIP J. DOUGHTY ASSOCIATES, ARCHITECTS. ON COMPLETION OF WORK, IT IS TO BE DESTROYED.