

REVISION	DATE	DESCRIPTION	APPROVED	DESIGNED	CHECKED	DRAWN
1	4/22/04	CONCRETE DRAINAGE RAISED FOR CONSTRUCTION	PHILIP J. DOUGHTY	PHILIP J. DOUGHTY	PHILIP J. DOUGHTY	PHILIP J. DOUGHTY
2	FEB 28 2004	REVISED	PHILIP J. DOUGHTY	PHILIP J. DOUGHTY	PHILIP J. DOUGHTY	PHILIP J. DOUGHTY

**PHILIP J. DOUGHTY ASSOC. ARCHITECTS**  
362 U.S. Route One, Falmouth, Maine 04105 • 207.781.5346

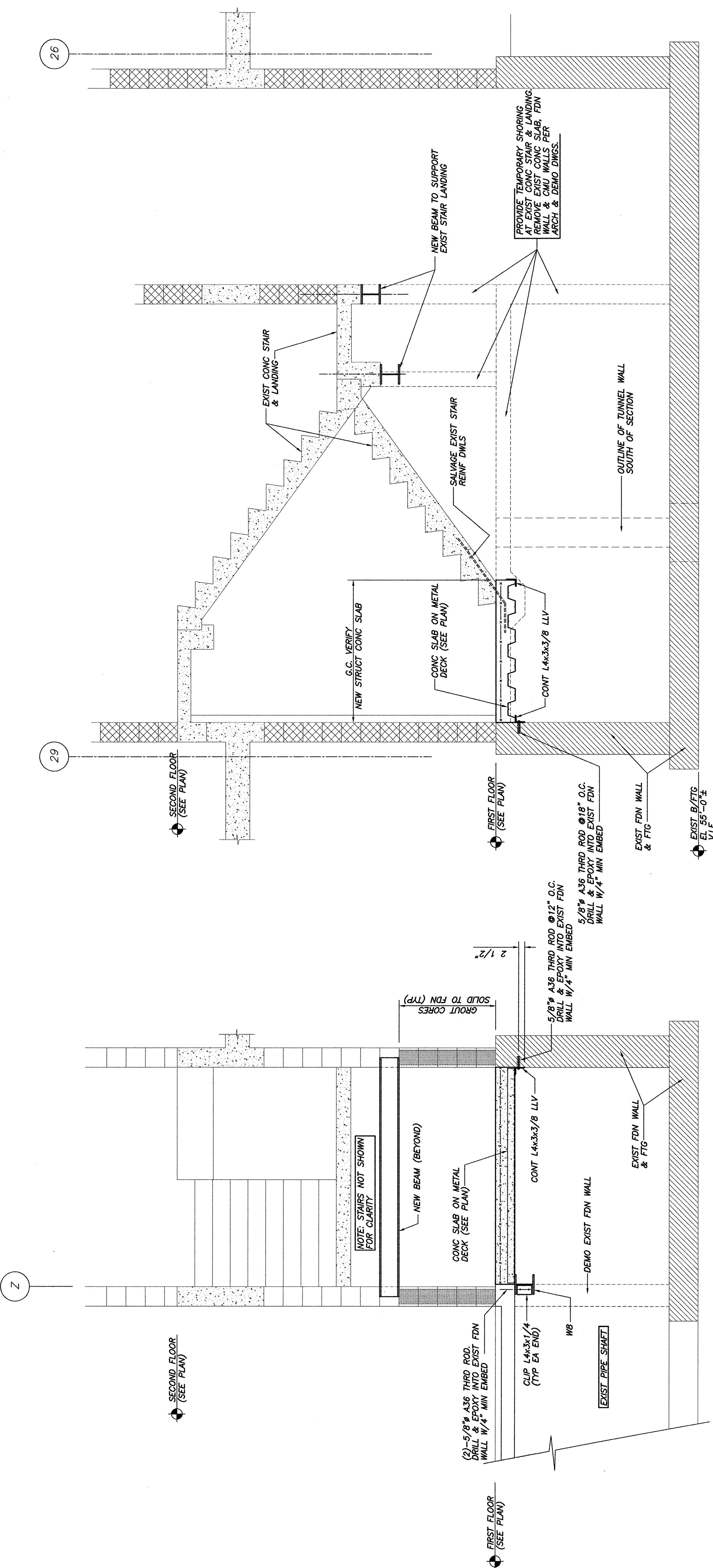
**PDA** ARCHITECTS

ADDITIONS AND ALTERATIONS  
EASTERN EXPANSION OF BAGGAGE CLAIM FACILITY  
PORTLAND INTERNATIONAL JETPORT, PORTLAND, MAINE

CONCRETE SECTIONS AND DETAILS

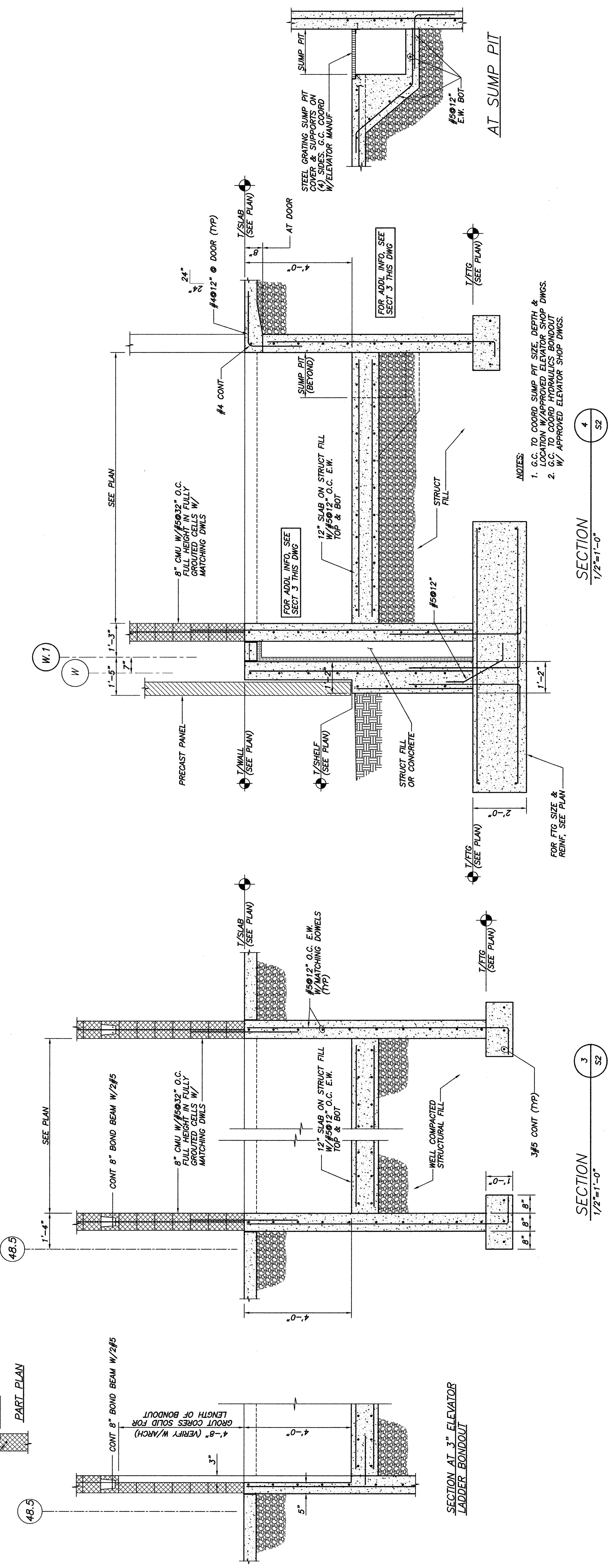
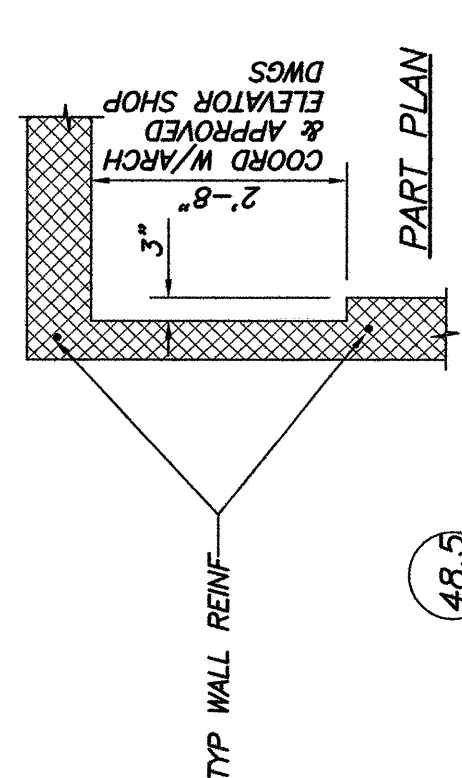
SCALE: 1/2" = 1'-0"  
DATE: FEB 28 2004  
DESIGNED BY: PHILIP J. DOUGHTY  
CHECKED BY: PHILIP J. DOUGHTY  
APPROVED BY: PHILIP J. DOUGHTY

SHEET NO. 212



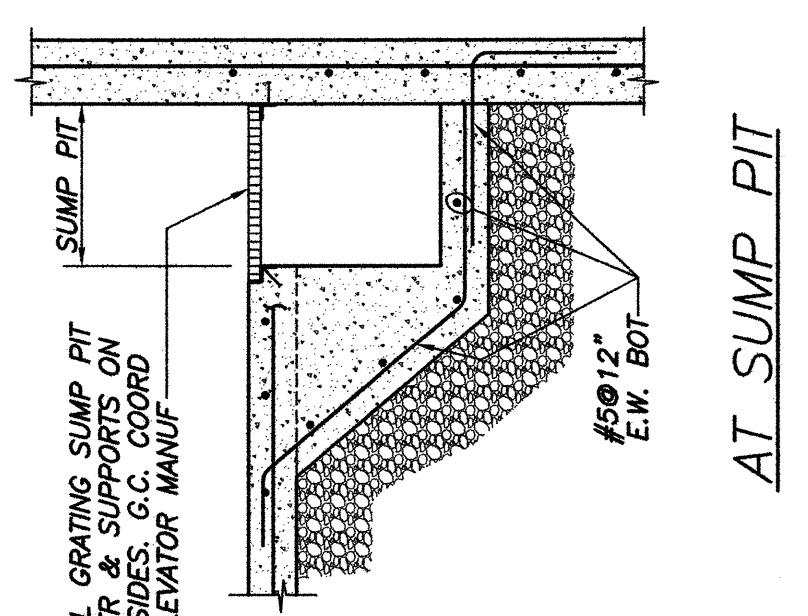
SECTION 1  
1/2" = 1'-0"

SECTION 2  
1/2" = 1'-0"



SECTION 3  
1/2" = 1'-0"

SECTION 4  
1/2" = 1'-0"



AT SUMP PIT

- NOTES:
- O.C. TO COORD SUMP PIT SIZE, DEPTH & LOCATION W/ APPROVED ELEVATOR SHOP DIMS.
  - O.C. TO COORD HYDRAULICS BONDOUT W/ APPROVED ELEVATOR SHOP DIMS.

THIS DRAWING IS AN INSTRUMENT OF SERVICE AND SHALL REMAIN THE PROPERTY OF PHILIP J. DOUGHTY ASSOCIATES, ARCHITECTS. IT IS TO BE USED ONLY FOR THE PROJECT AND SITE SPECIFICALLY IDENTIFIED HEREON. IT IS NOT TO BE REPRODUCED, COPIED, REPRODUCED, OR TRANSMITTED IN ANY FORM OR BY ANY MEANS, ELECTRONIC OR MECHANICAL, INCLUDING PHOTOCOPYING, RECORDING, OR BY ANY INFORMATION STORAGE AND RETRIEVAL SYSTEM, WITHOUT THE WRITTEN PERMISSION OF PHILIP J. DOUGHTY ASSOCIATES, ARCHITECTS. ALL RIGHTS ARE RESERVED.