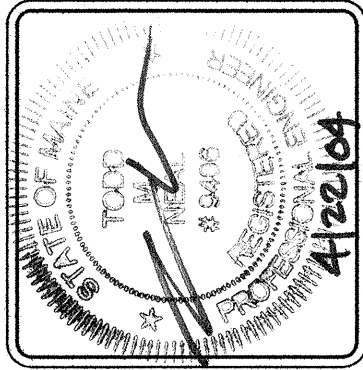


REVISION	DATE	DESCRIPTION	DESIGNED	CHECKED	APPROVED
1	4/22/04	CONCRETE DRAINAGE RAISED FOR CONSTRUCTION	APP	TRN	TRN
2	FEB 28 2004	ADD REMITTAL	APP	TRN	TRN
3					
4					
5					
6					
7					
8					
9					
10					

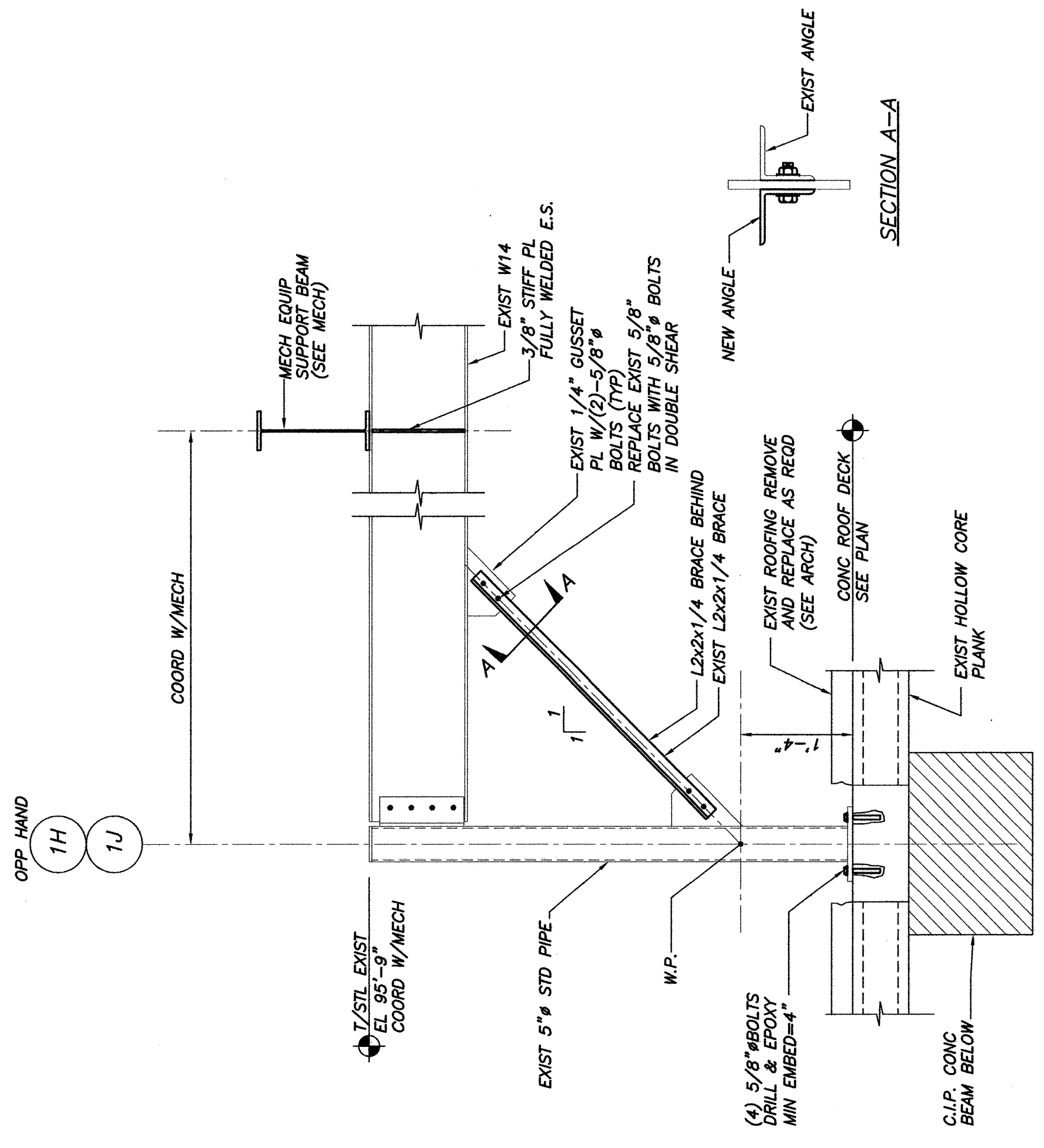


Phillip J. Doughty Assoc., Architects
362 U.S. Route One, Falmouth, Maine 04105 • 207.781.5346

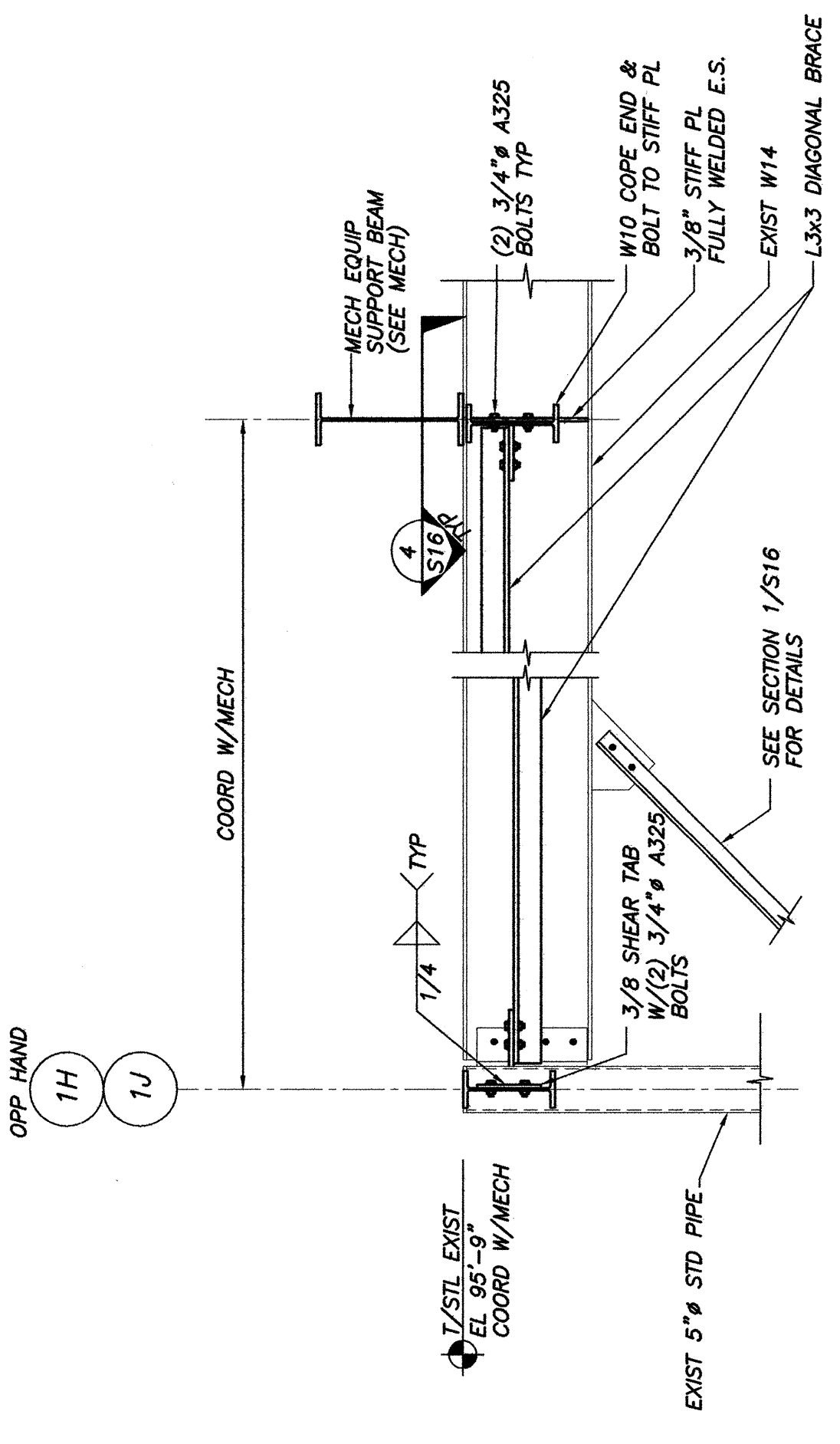
ADDITIONS AND ALTERATIONS:
EASTERN EXPANSION OF BAGGAGE CLAIM FACILITY
PORTLAND INTERNATIONAL AIRPORT, PORTLAND, MAINE
WEST END MECHANICAL SUPPORT
FRAMING SECTIONS AND DETAILS

DATE: FEB 28 2004
DESIGNED BY: JPD
CHECKED BY: JPD
APPROVED BY: JPD

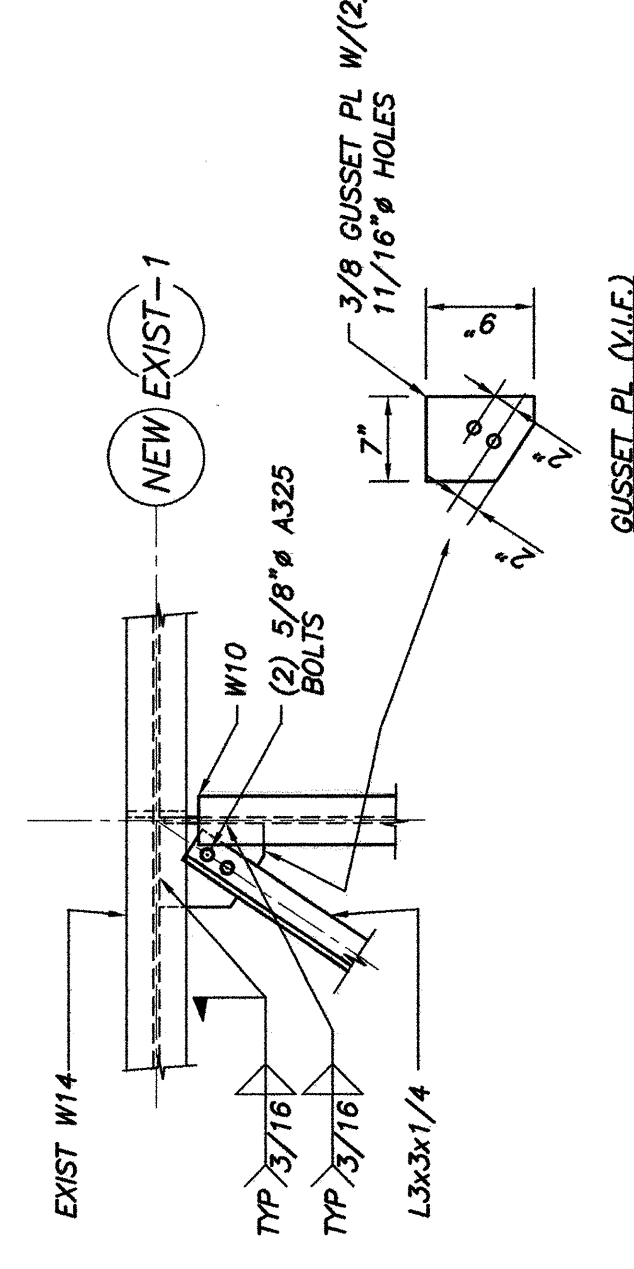
SHEET NO. 916
PROJECT NO. 002



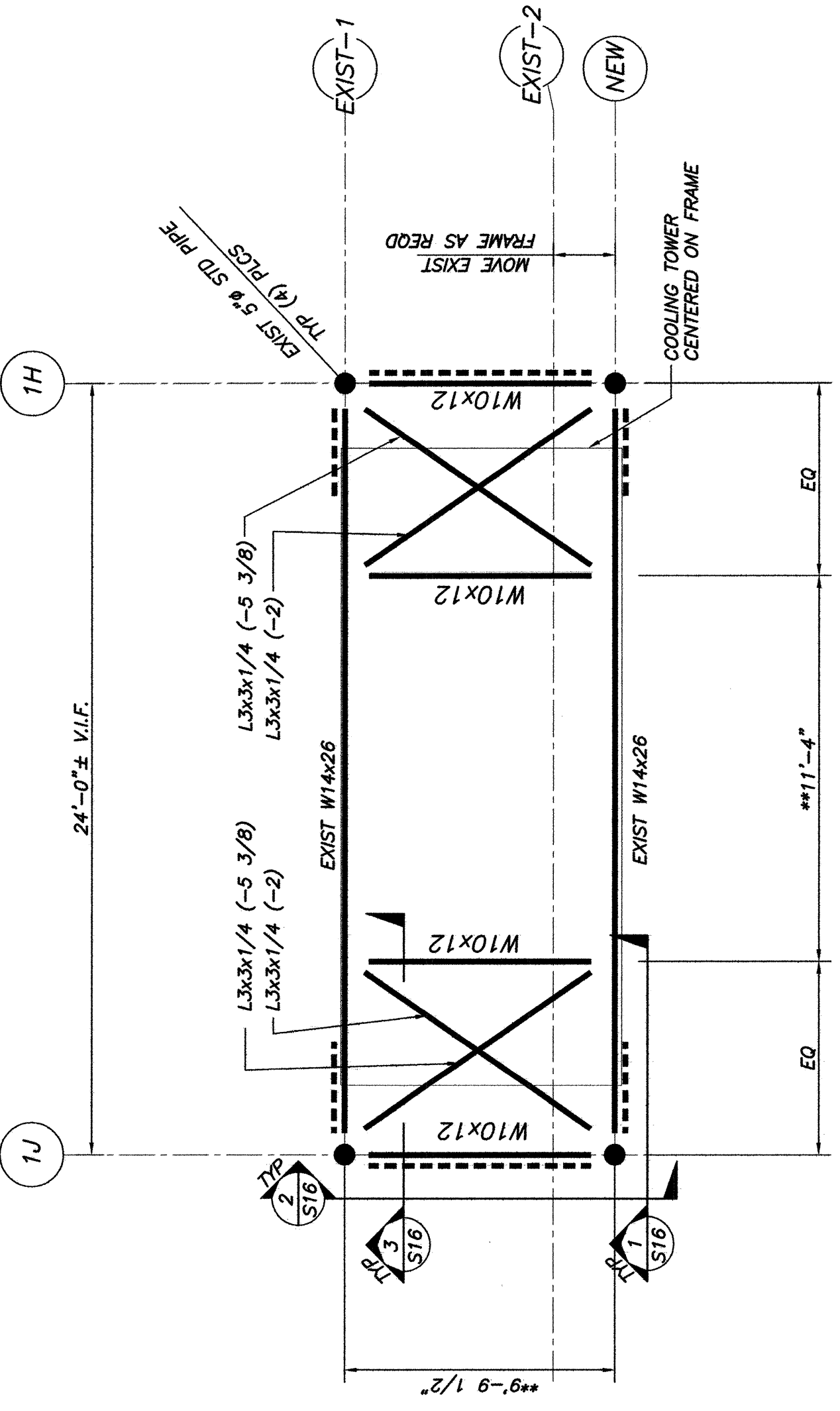
SECTION 1
3/4"=1'-0"



SECTION 3
3/4"=1'-0"

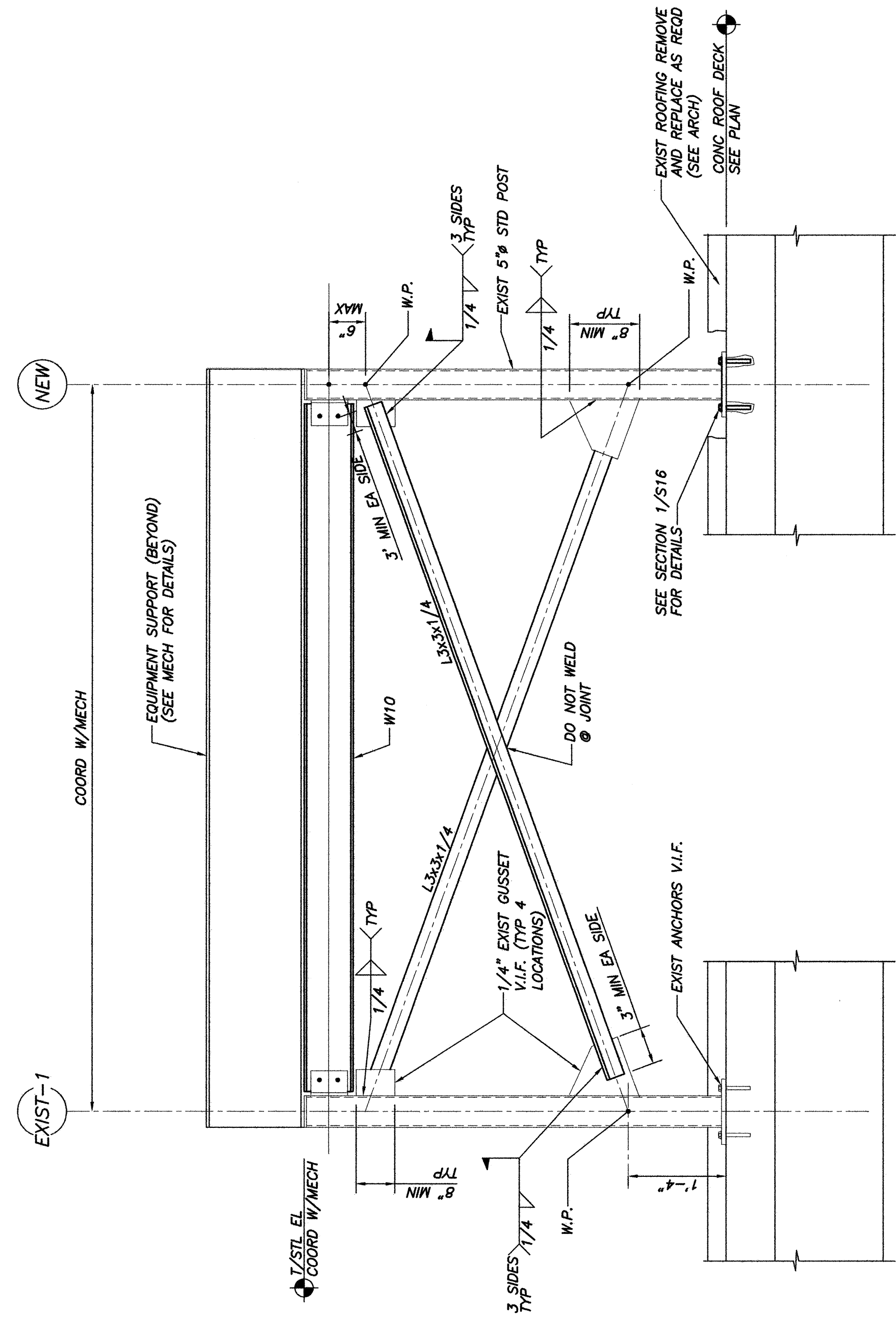
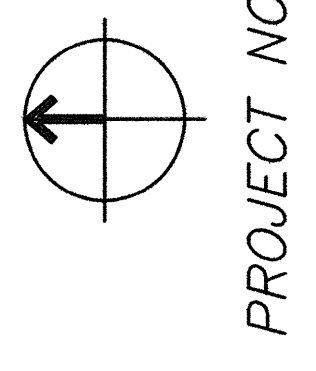


SECTION 4
3/4"=1'-0"



WEST END MECHANICAL SUPPORT PLAN
N.T.S.

- NOTES:
1. CONTRACTOR TO REUSE EXIST STEEL FRAMES. REMOVE ALL STEEL MEMBERS FRAMING NORTH-SOUTH. MOVE FRAME 2 SOUTH & REUSE EXIST STEEL FRAMING AS 2 SOUTH.
 2. 1/4" INDICATES DIMENSION TO BE COORDINATED.
 3. 3/8" INDICATES DIMENSION TO BE COORDINATED.
 4. WITH MECH DRAWINGS.
 5. OF EXIST STEEL FRAMING IN THE FIELD.



SECTION 2
3/4"=1'-0"