

REVIS. N.	DESCRIPTION	DATE
1	CONFORMED DRAWINGS	4/22/04
0	BD SUBMITTAL	3/10/04

DATE	APPROVED	CHECKED	DRAWN
3/10/04	HP	HP	PO
3/22/04	HP	HP	PO
4/22/04	HP	HP	PO

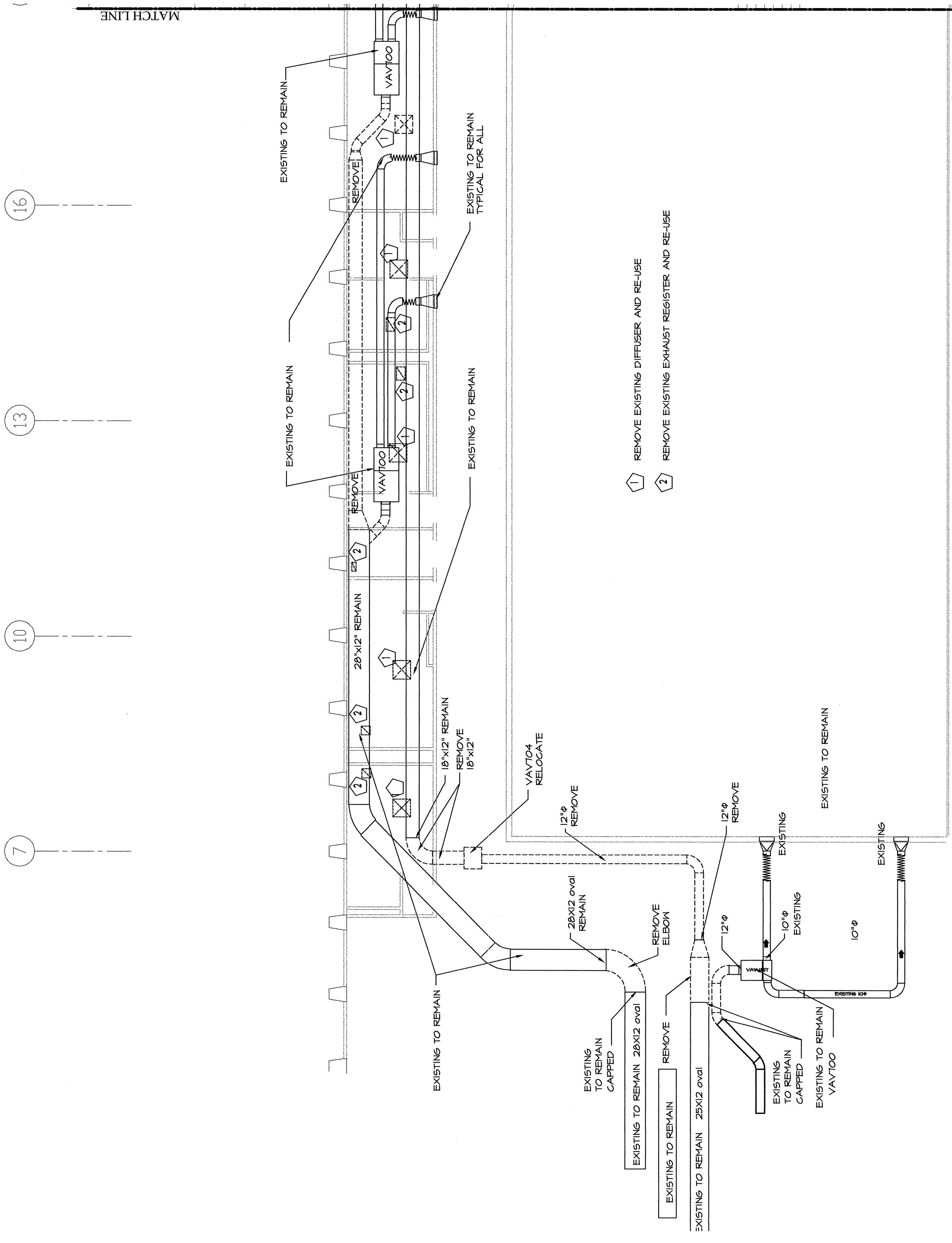
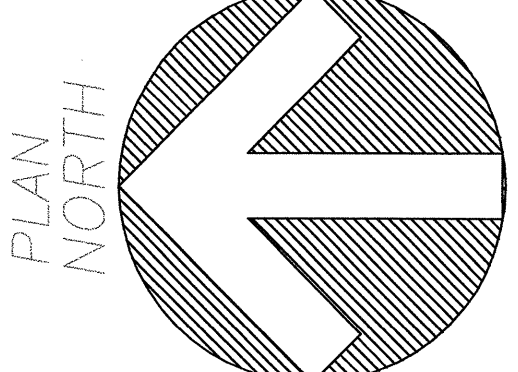
**PHILIP J. DOUGHTY ASSOC., ARCHITECTS**  
 Architects 362 U.S. Route One, Falmouth, Maine 04105 • 207.781.5346

**PDA**  
 APPROVED: \_\_\_\_\_  
 CHECKED: HLF  
 DRAWN: PO  
 DESIGNED: PO  
 DATE: FEB. 23, 2004

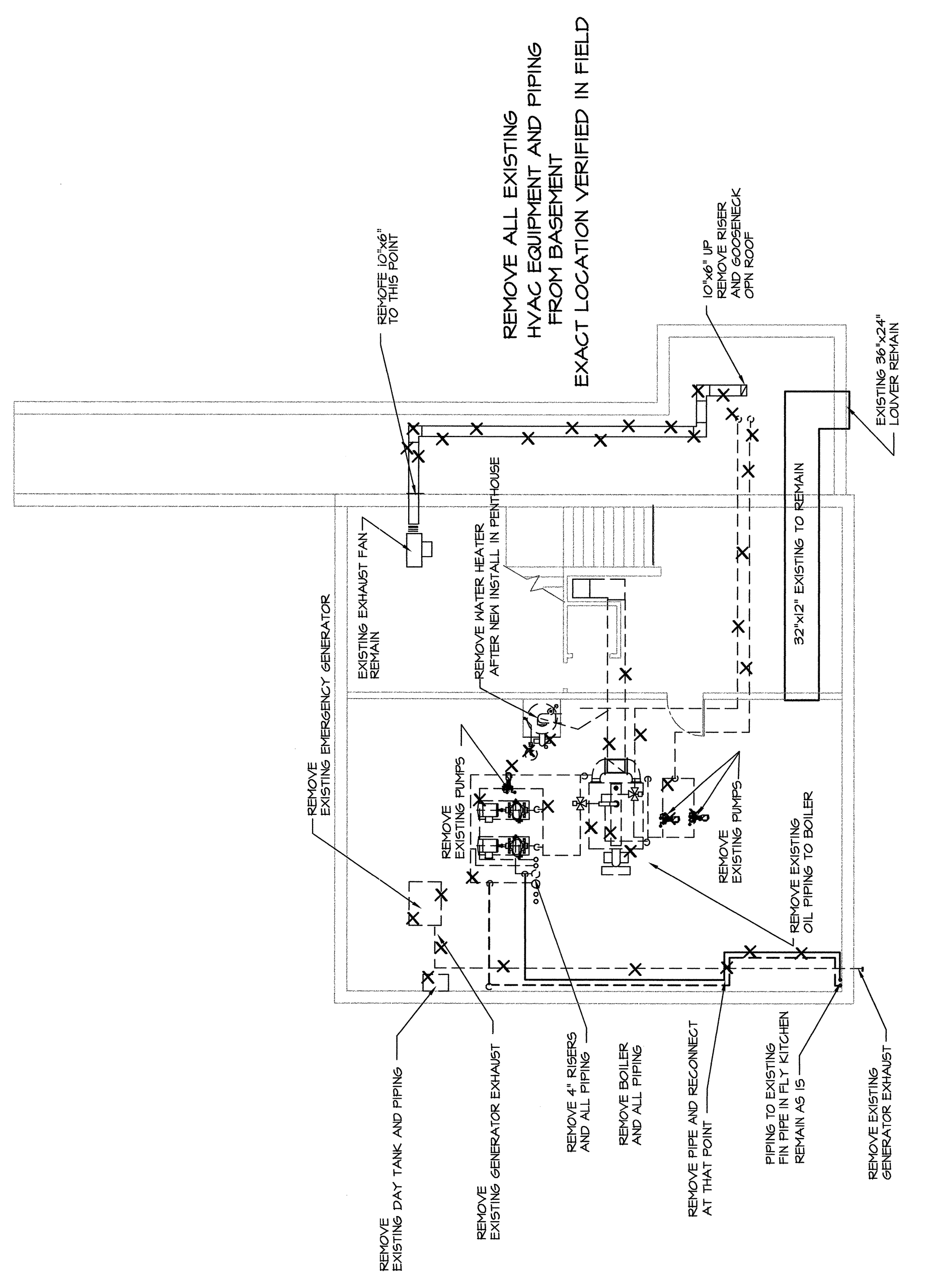
**ADDITIONS AND ALTERATIONS,  
 EASTLY EXPANSION OF BAGGAGE CLAIM FACILITY,  
 PORTLAND INTERNATIONAL JETPORT, PORTLAND, MAINE**  
 BASEMENT & SECOND FLOOR CONTINUATION  
 DEMOLITION PLANS

PROJ. \_\_\_\_\_  
 SHEET NO. \_\_\_\_\_  
**MD3**

**MECHANICAL SYSTEMS ENGINEERS**  
 10 ROBERT CENTER, UNIT #10  
 VANORCH, MAINE 04096  
 FAX: (207) 846-1443  
 MECHANICAL SYSTEMS ENGINEERS  
 mechanical@msmeinc.com



**SECOND FLOOR DEMOLITION PLAN CONTINUATION**  
 SCALE: 1/8"=1'-0"



**BASEMENT DEMOLITION PLAN**  
 SCALE: 1/8"=1'-0"

THIS DRAWING IS AN INSTRUMENT OF SERVICE AND SHALL REMAIN THE PROPERTY OF MECHANICAL SYSTEMS ENGINEERS. IT IS TO BE USED ONLY FOR THE PROJECT AND SITE SPECIFICALLY IDENTIFIED HEREON. IT IS NOT TO BE REPRODUCED, COPIED, OR TRANSMITTED IN ANY FORM OR BY ANY MEANS, ELECTRONIC OR MECHANICAL, WITHOUT THE WRITTEN PERMISSION OF MECHANICAL SYSTEMS ENGINEERS. ARCHITECTS OR CONSULTANTS OF WORK, IF REQUESTED.