

**MECHANICAL SYSTEMS ENGINEERS**  
 ROYAL RIVER CENTER UNIT #10  
 10 FOREST FALLS DRIVE  
 FARMINGTON, MAINE 04830  
 VOICE: (207) 846-1441  
 FAX: (207) 846-1443  
 mechsyst@maine.com

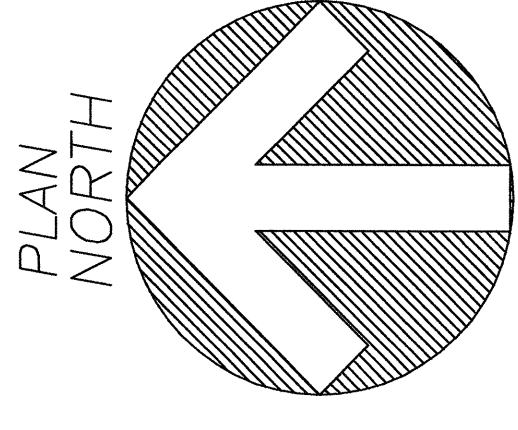
REVISION	DATE	DESCRIPTION	DRAWN	CHECKED	APPROVED
1	4/22/04	CONFORMED DRAWINGS	HP	HP	HP
2	3/22/04	ADDENDUM NO. 2	HP	HP	HP
3	3/10/04	ADDENDUM NO. 1	HP	HP	HP
4	FEB 26, 2004	BID SUBMITTAL	HP	HP	HP

**PDA Architects**  
 362 U.S. Route One, Falmouth, Maine 04105 • 207.781.5346  
**Phillip J. Doughty Assoc. • Architects**

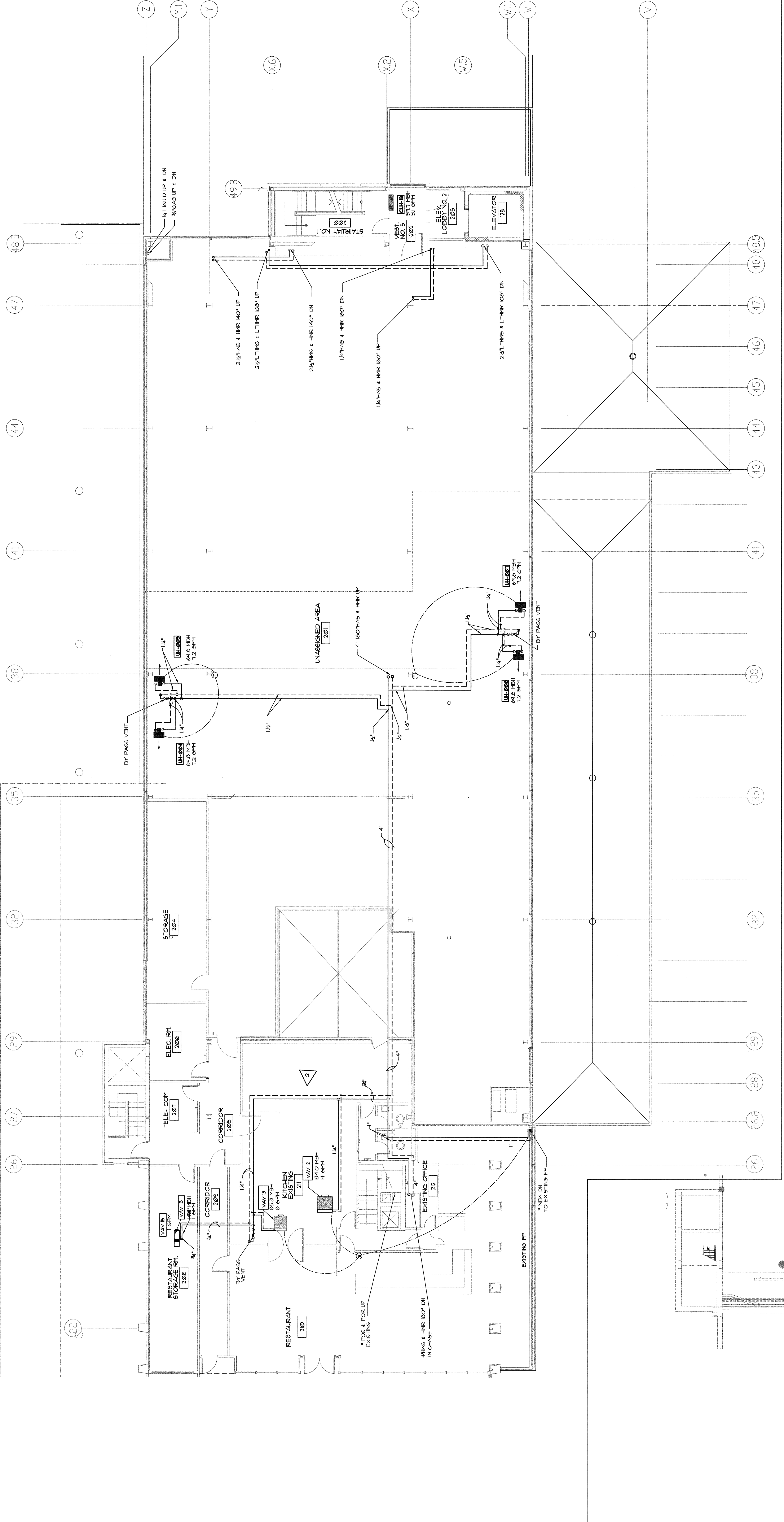
APPROVED: \_\_\_\_\_  
 CHECKED: HLF  
 DRAWN: PD  
 DESIGNED: PD  
 DATE: FEB 26, 2004  
 SCALE: AS NOTED

PROJECT: EASTERN EXPANSION OF BAGGAGE CLAIM FACILITY  
 PORTLAND INTERNATIONAL AIRPORT, PORTLAND, MAINE  
 PLAN: PIPING SECOND FLOOR PLAN & BASEMENT

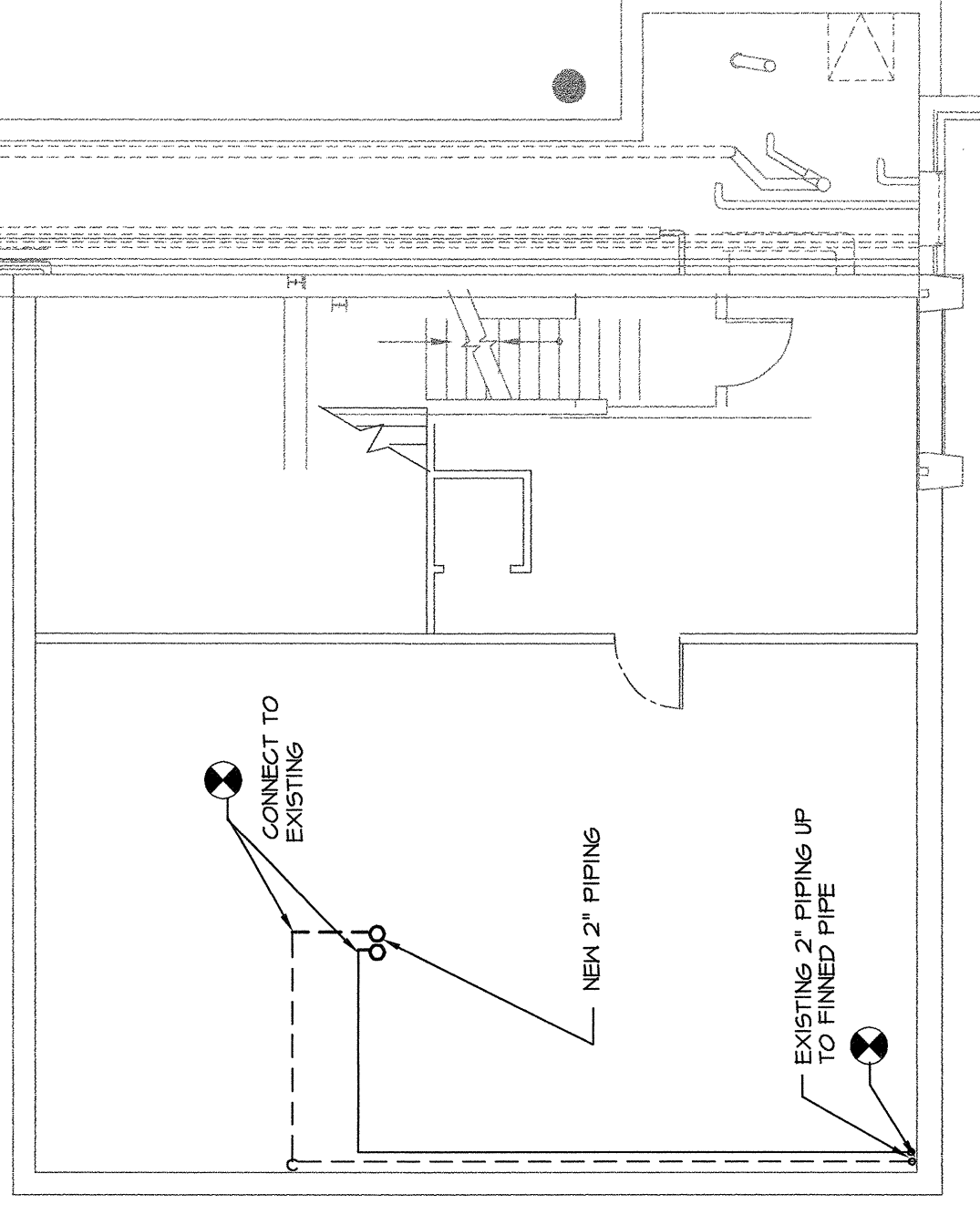
PROJ. SHEET NO. **M2**



1/8" = 1'-0"  
 0' 2' 4' 6' 8' 24'



**PIPING SECOND FLOOR PLAN**  
 SCALE: 1/8" = 1'-0"



**PIPING BASEMENT FLOOR PLAN**  
 SCALE: 1/8" = 1'-0"

THIS DRAWING IS AN INSTRUMENT OF SERVICE AND SHALL REMAIN THE PROPERTY OF PHILLIP J. DOUGHTY ASSOCIATES. NO PART OF THIS DRAWING SHALL BE REPRODUCED OR TRANSMITTED IN ANY FORM OR BY ANY MEANS, ELECTRONIC OR MECHANICAL, WITHOUT THE WRITTEN PERMISSION OF PHILLIP J. DOUGHTY ASSOCIATES. ANY REPRODUCTION OR TRANSMISSION OF THIS DRAWING WITHOUT THE WRITTEN PERMISSION OF PHILLIP J. DOUGHTY ASSOCIATES IS STRICTLY PROHIBITED AND MUST BE RETURNED TO PHILLIP J. DOUGHTY ASSOCIATES UPON COMPLETION OF WORK. IF REQUESTED.