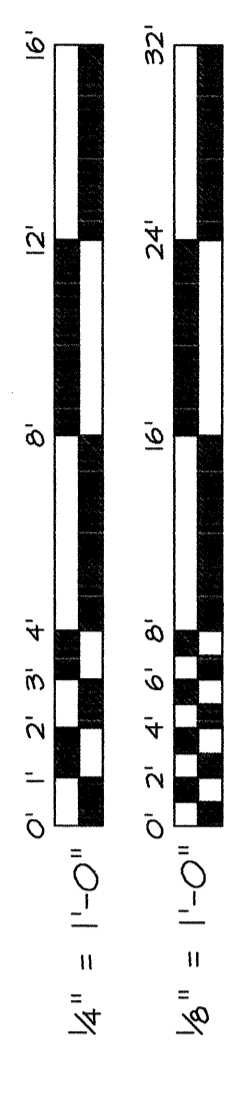


DETAIL 'B'
SCALE: 1/8" = 1'-0"



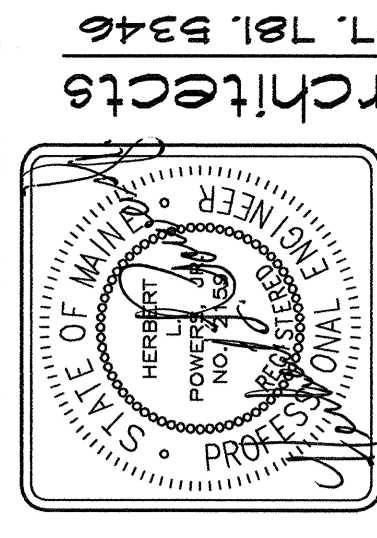
DETAIL 'A'
SCALE: 3/8" = 1'-0"

SECTION A-A
SCALE: 1/4" = 1'-0"

THIS DRAWING IS AN INSTRUMENT OF SERVICE AND SHALL REMAIN THE PROPERTY OF PHILIP J. DOUGHTY ASSOCIATES, INC. UNLESS OTHERWISE SPECIFICALLY STATED TO THE CONTRARY. NO PART OF THIS DRAWING SHALL BE REPRODUCED OR TRANSMITTED IN ANY FORM OR BY ANY MEANS, ELECTRONIC OR MECHANICAL, WITHOUT THE WRITTEN PERMISSION OF PHILIP J. DOUGHTY ASSOCIATES, INC. CONTRACT NO. 2017-101-B346

SCALE:	AS NOTED
DATE:	FEB 28, 2024
DESIGNED:	P.O.
DRAWN:	P.O.
CHECKED:	H.L.F.
APPROVED:	

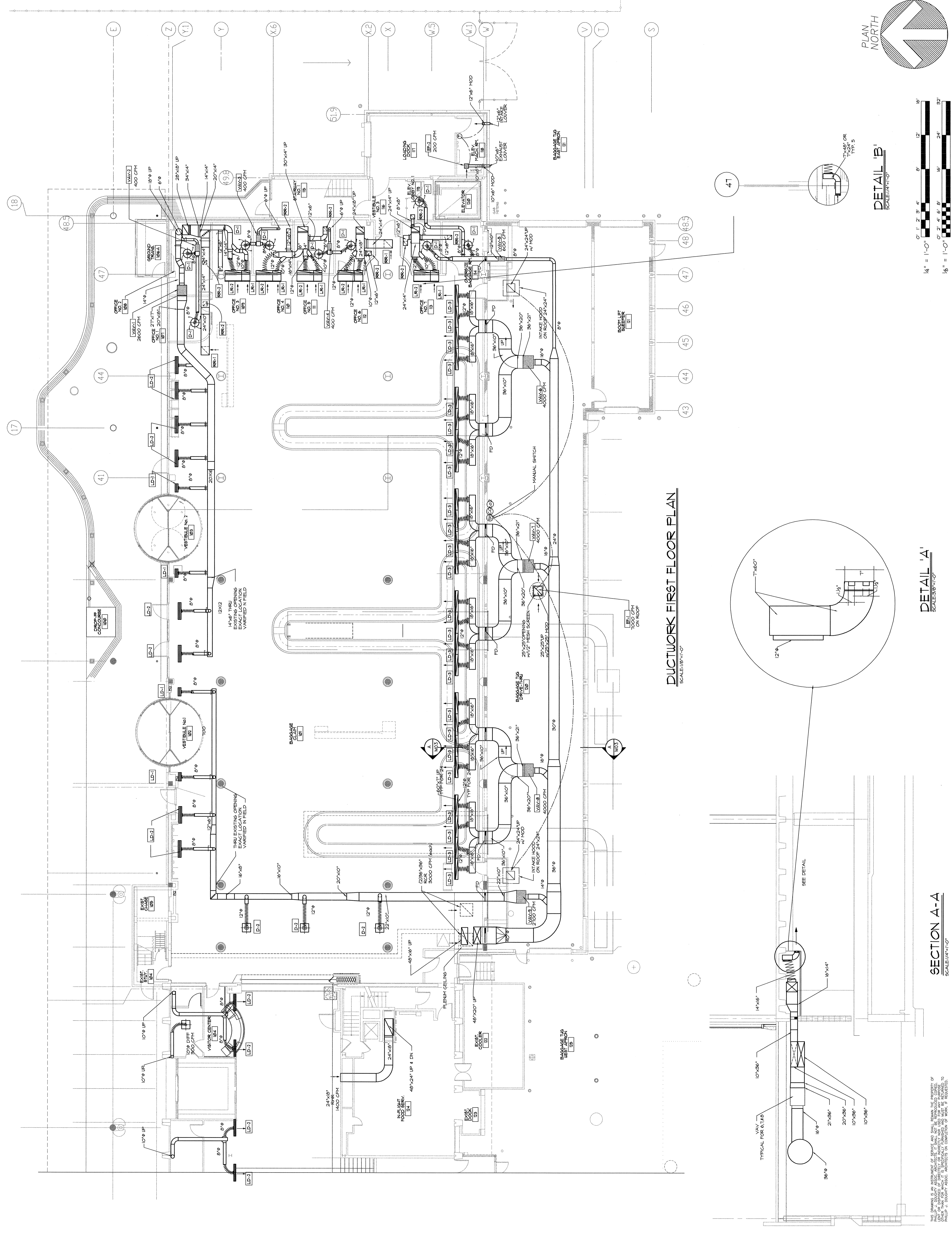
ADDITIONS AND ALTERATIONS:
 EASTLY EXPANSION OF BAGGAGE CLAIM FACILITY
 PORTLAND INTERNATIONAL AIRPORT, PORTLAND, MAINE
 DUCTWORK FIRST FLOOR PLAN AND DETAILS



Phillip J. Doughty Assoc. • Architects
 362 U.S. Route One, Falmouth, Maine 04105 • 207.761.8346

REVISION	DATE	DESCRIPTION
1	4/22/24	CONFORMED DRAWINGS
2	3/22/24	ADDENDUM No. 2
3	3/10/24	ADDENDUM No. 1
4	FEB 28, 2024	BD SUBMITTAL

MECHANICAL SYSTEMS ENGINEERS
 PHILIP J. DOUGHTY ASSOCIATES, INC.
 362 U.S. ROUTE ONE, FALMOUTH, MAINE 04105
 TEL: (207) 848-1443
 FAX: (207) 848-1441
 VOICE: (207) 848-1441
 WWW.PJDARCHITECTS.COM
 MECHANICALSYSTEMS@PJDARCHITECTS.COM



DUCTWORK FIRST FLOOR PLAN
SCALE: 1/8" = 1'-0"

