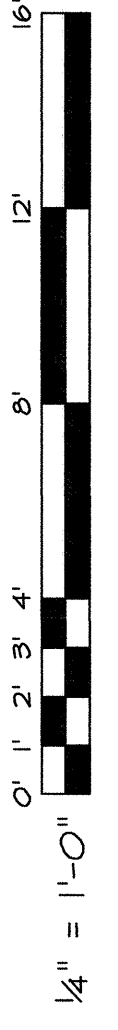
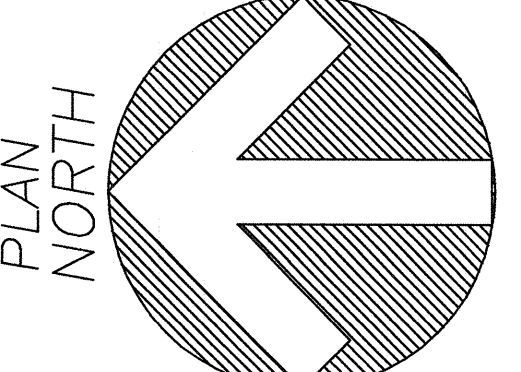


REVIS	NO.	DATE	DESCRIPTION
1	1	4/22/04	CONFORMED DRAWINGS
0	0	3/10/04	BID SUBMITTAL

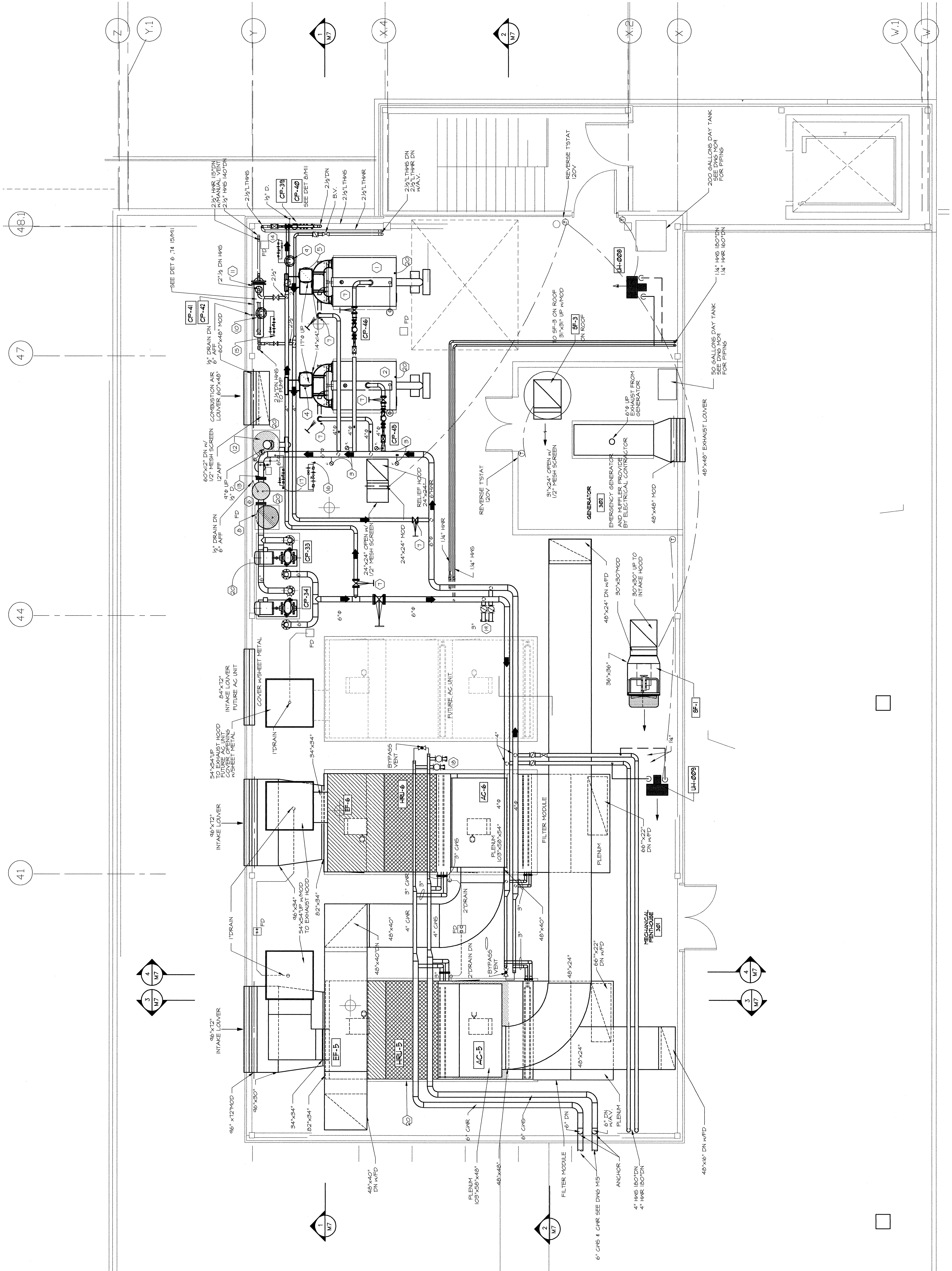
ADDITIONS AND ALTERATIONS
 EASTLY EXPANSION OF BAGGAGE CLAIM FACILITY
 PORTLAND INTERNATIONAL JETPORT, PORTLAND, MAINE
 MECHANICAL PENTHOUSE FLOOR PLAN

SCALE: AS SHOWN
 DATE: FEB 23 2004
 DESIGNED: P.J.
 DRAWN: H.P.
 CHECKED: H.P.
 APPROVED: H.P.



KEYED NOTES

1	BOILER #3
2	BOILER #4
3	THERMISTERS
4	L.D. FAN
5	L.D. FAN
6	6" AIR SEPARATOR
7	4" GAUGE VALVE
8	EXPANSION TANK 160 GAL. VOLUME (DO GAL. ACCEPTANCE)
9	2-1/2" AIR SEPARATOR
10	2-1/2" AIR SEPARATOR
11	CONCRETE (216, 5'-0" x 2' 3" PASSES)
12	CONCRETE (216, 5'-0" x 2' 3" PASSES)
13	CONCRETE (216, 5'-0" x 2' 3" PASSES)
14	CONCRETE (216, 5'-0" x 2' 3" PASSES)
15	CONCRETE (216, 5'-0" x 2' 3" PASSES)
16	CONCRETE (216, 5'-0" x 2' 3" PASSES)
17	CONCRETE (216, 5'-0" x 2' 3" PASSES)
18	CONCRETE (216, 5'-0" x 2' 3" PASSES)
19	CONCRETE (216, 5'-0" x 2' 3" PASSES)
20	CONCRETE (216, 5'-0" x 2' 3" PASSES)
21	CONCRETE (216, 5'-0" x 2' 3" PASSES)
22	CONCRETE (216, 5'-0" x 2' 3" PASSES)



MECHANICAL PENTHOUSE FLOOR PLAN
 SCALE: 1/4" = 1'-0"

THIS DRAWING IS THE PROPERTY OF PHILLIP J. DOUGHTY ASSOCIATES. IT IS TO BE USED ONLY FOR THE PROJECT AND SITE SPECIFICALLY IDENTIFIED HEREON. IT IS NOT TO BE REPRODUCED, COPIED, OR TRANSMITTED IN ANY FORM OR BY ANY MEANS, WITHOUT THE WRITTEN PERMISSION OF PHILLIP J. DOUGHTY ASSOCIATES. ARCHITECTS ON COMPLETION OF WORK, IS REQUESTED.