

PROJ. SHEET NO. M7
 OF SH

SCALE: AS NOTED
 DATE: FEB. 28, 2004
 DESIGNED: P.J.
 DRAWN: P.J.
 CHECKED: H.P.
 APPROVED: P.J.

ADDITIONS AND ALTERATIONS:
 EARLY EXPANSION OF BAGGAGE CLAIM FACILITY
 PORTLAND INTERNATIONAL AIRPORT, PORTLAND, MAINE
 SECTIONS 1-1, 2-2, 3-3 & 4-4

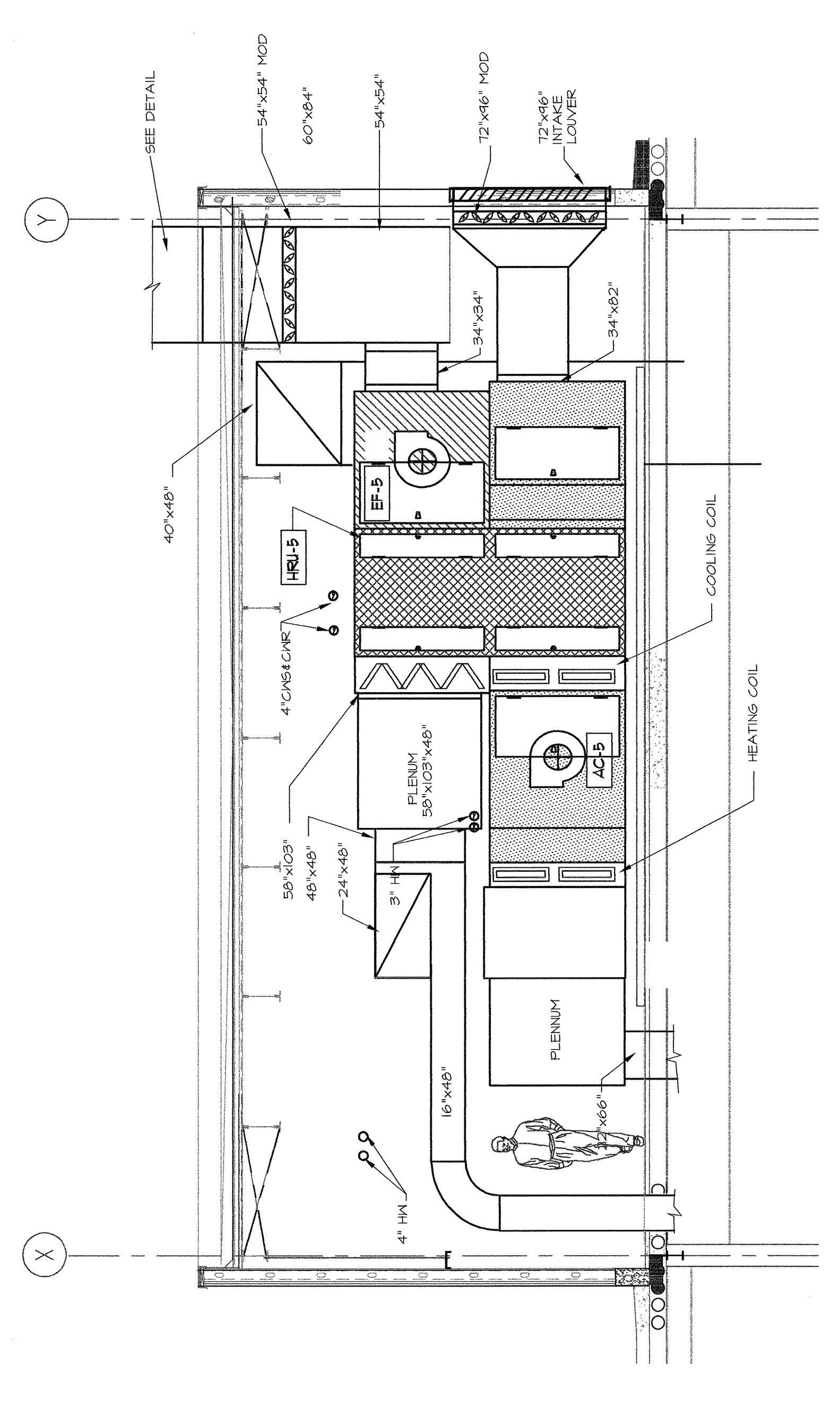


PHILIP J. DOUGHTY ASSOCIATES ARCHITECTS
 362 U.S. ROUTE ONE, FALMOUTH, MAINE 04105 • 207.781.5346

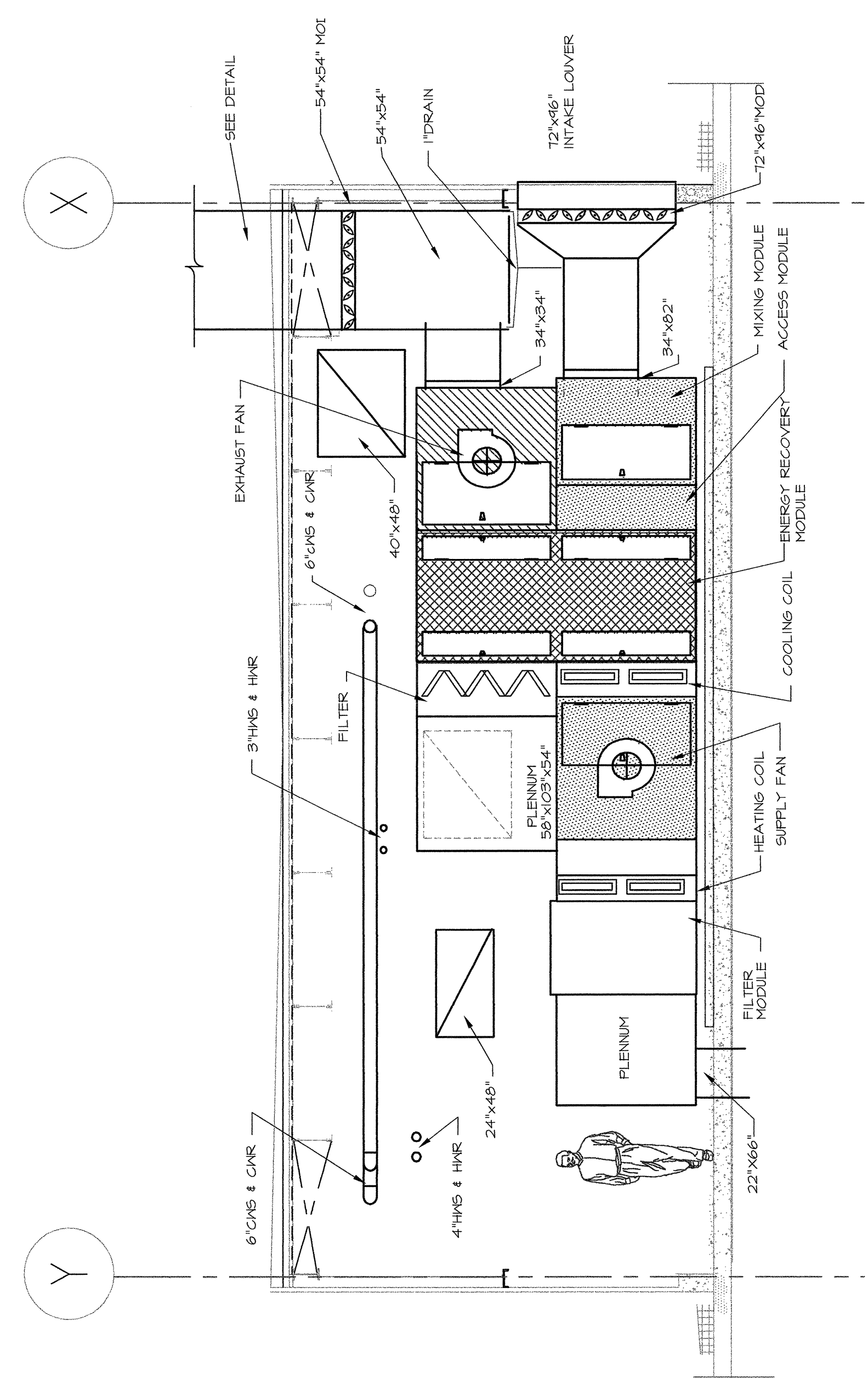
REVISION	DATE	DESCRIPTION	BY	CHKD	APP'D
1	4/22/04	CONFORMED DRAWINGS	P.J.	H.P.	P.J.
2	3/22/04	ADDENDUM NO. 2	P.J.	H.P.	P.J.
3	3/10/04	ADDENDUM NO. 1	P.J.	H.P.	P.J.
4	3/10/04	BID SUBMITTAL	P.J.	H.P.	P.J.
5	FEB. 28, 2004		P.J.	H.P.	P.J.

MECHANICAL SYSTEMS ENGINEERS
 ROYAL RIVER CENTER, SUITE #10
 10 FOREST FALLS DRIVE
 YAKAMOUTH, MAINE 04096
 FAX: (207) 848-1443
 VOICE: (207) 848-1441
 PHILIP.J.DOUGHTY@MESE.COM

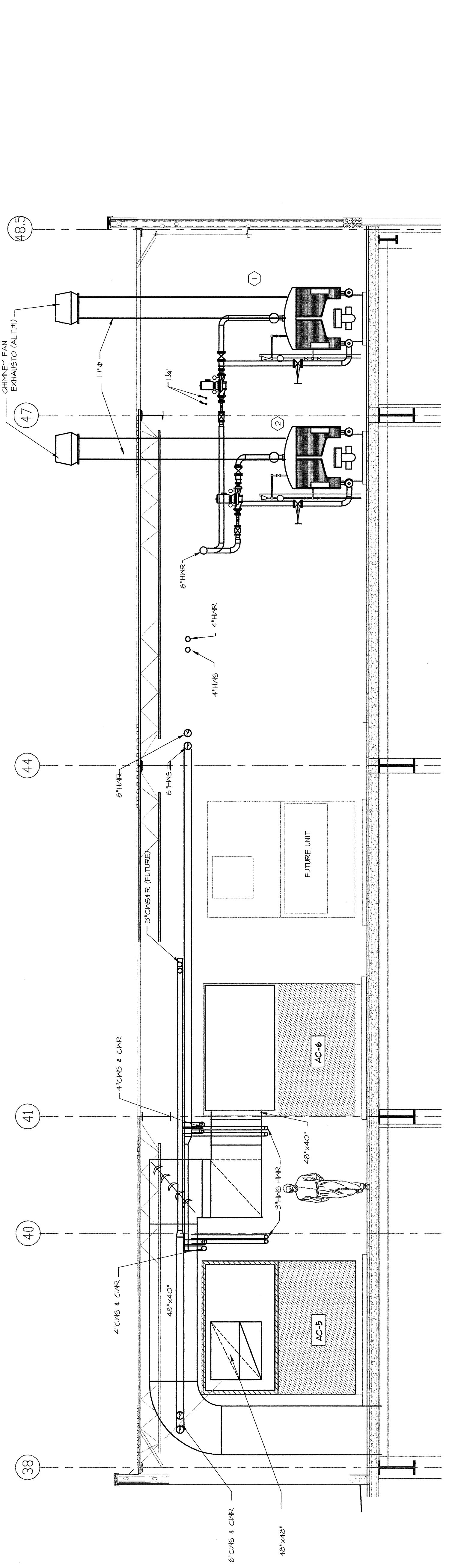
SECTION 3-3
 SCALE: 1/4" = 1'-0"



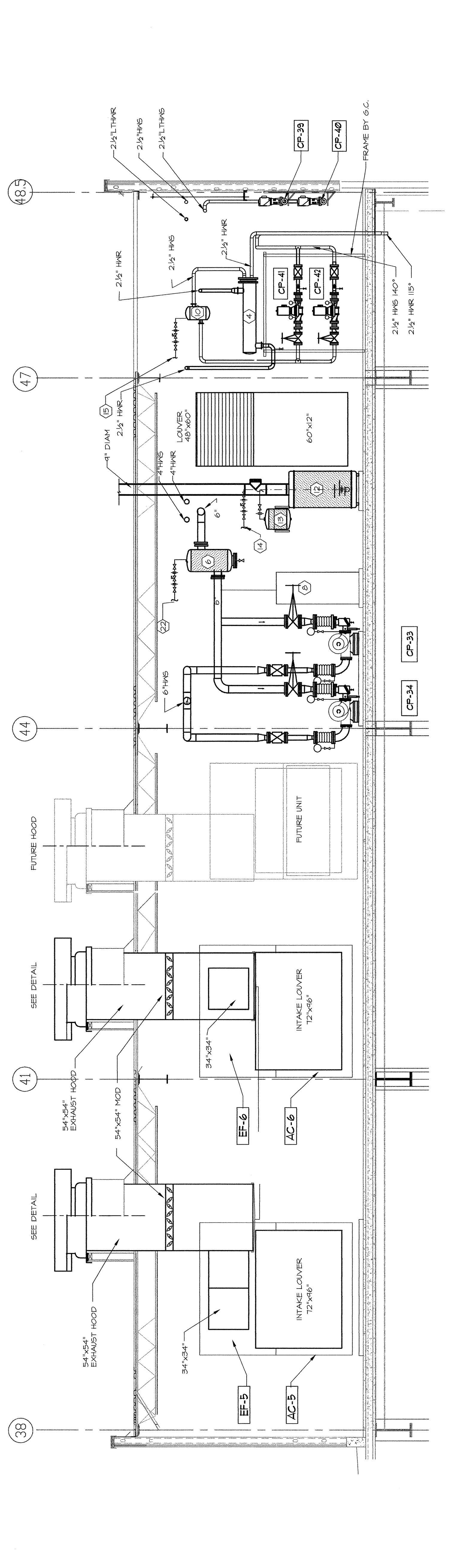
SECTION 4-4
 SCALE: 1/4" = 1'-0"



SECTION 2-2
 SCALE: 1/4" = 1'-0"



SECTION 1-1
 SCALE: 1/4" = 1'-0"



MT

MT

MT

MT

MT

MT

MT

MT