
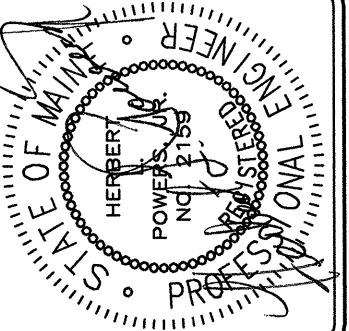


MECHANICAL SYSTEMS ENGINEERS
 ROYAL RIVER CENTER, UNIT #10
 10 FOREST FALLS DRIVE
 YARMOUTH, MAINE 04096
 VOICE: (207) 846-1441
 FAX: (207) 846-1443
 mechsys@maine.rr.com



| REV'S | NO. | DATE | DESCRIPTION |
|-------|-----|--------------|--------------------|
| 1 | 1 | 4/22/04 | CONFORMED DRAWINGS |
| 2 | 1 | 3/22/04 | ADDendum No. 2 |
| 3 | 1 | 3/10/04 | ADDendum No. 1 |
| 4 | 1 | FEB 29, 2004 | ISS SUBMITTAL |

PDA Architects
 Phillip J. Doughty Assoc. • Architects
 362 U.S. Route One, Falmouth, Maine 04105 • 207.781.5346

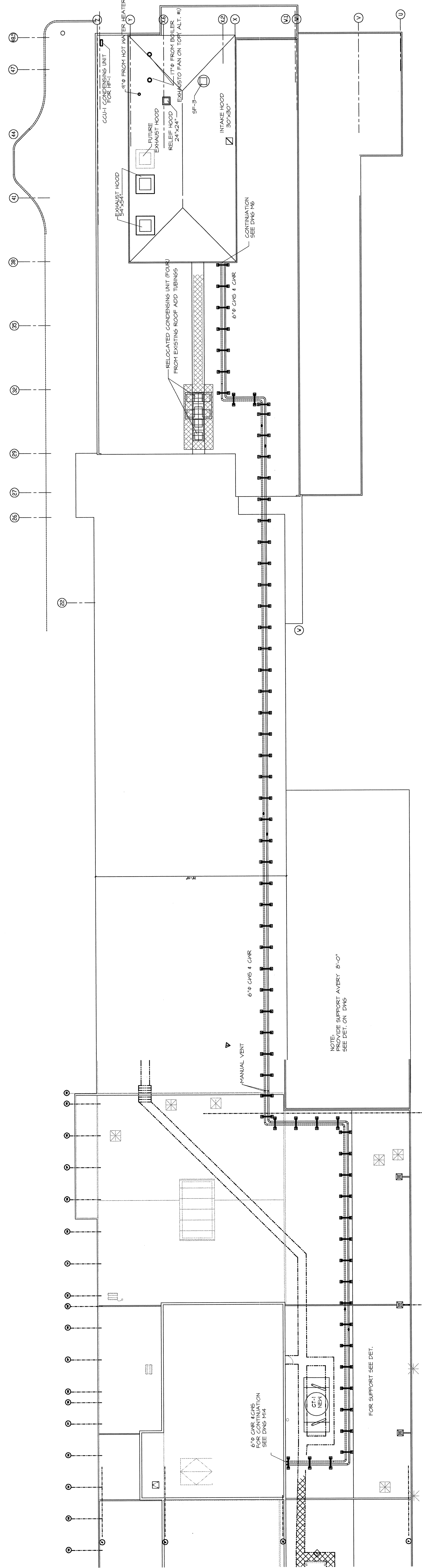
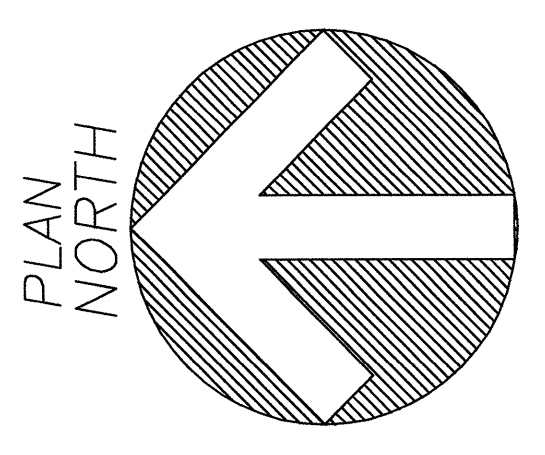


MECHANICAL - ROOF PLAN

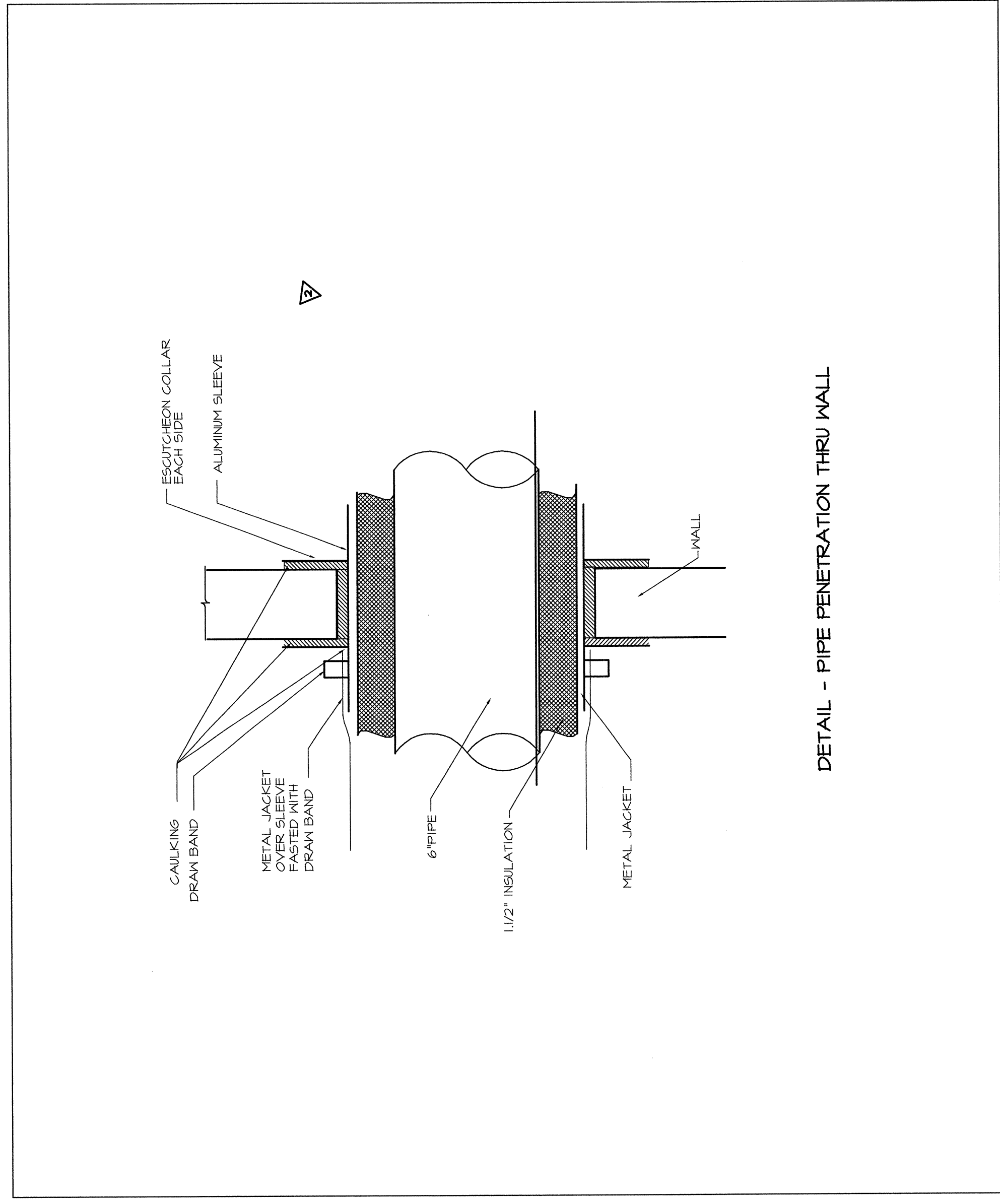
EASTLY EXPANSION OF BAGGAGE CLAIM FACILITY
 PORTLAND INTERNATIONAL JETPORT, PORTLAND, MAINE

SCALE: AS NOTED
 DATE: FEB 29, 2004
 DESIGNED: PJD
 DRAWN: MJP
 CHECKED: MJP
 APPROVED: MJP

PROJ: SHEET NO. **M15**
 OF 1 SHT



MECHANICAL - ROOF PLAN
 SCALE: 1/8"=1'-0"



THIS DRAWING IS AN INSTRUMENT OF SERVICE AND SHALL REMAIN THE PROPERTY OF PHILLIP J. DOUGHTY ASSOCIATES. ANY REUSE, REPRODUCTION, OR DISTRIBUTION OF THIS DRAWING WITHOUT THE WRITTEN CONSENT OF PHILLIP J. DOUGHTY ASSOCIATES IS STRICTLY PROHIBITED AND WILL BE RETURNED TO PHILLIP J. DOUGHTY ASSOCIATES IN COMPLETELY UNACCEPTABLE MANNER.