

PROVIDE 12 ADDITIONAL TYPE P FIXTURES (BOLLARDS) LOCATED AT PEDESTRIAN CROSSING (SEE PLAN) AT STAIRWELL. PROVIDE 6 BOLLARDS OF EXISTING WALKWAY (SEE PLAN) AND SOUTH) ACROSS ROAD. CIRCUIT SHALL BE 270.0, 1/10, 3/4", MINIMUM. ORIENTATION DETERMINED IN FIELD.

REFER TO CIVIL PLANS FOR EXACT LOCATION

INSTALL NEW 20A/1P LTC CONTACTOR IN TUG AREA BESIDE BAG CONVEYOR CONTROL PANEL. COIL OF CONTACTOR TO MATCH CONTROL PANEL. CONTACTOR TO BE ENERGIZED AND TURNED ON BY DOWN LIGHTS OVER THE CONVEYOR. CONTACTOR SHALL BE INDICATED BY "4", "5", OR "6" TYPICAL OF 3.

ELECTRICAL CONTRACTOR WILL ADJUST CUTOFF OF ALL TYPE "H" LIGHTING FIXTURES TO THE SATISFACTION OF THE OWNER.

CIRCUIT THROUGH LIGHTING CONTROL RELAY IN SECOND FLOOR ELECTRIC ROOM.

KEYNOTES FOR BAGGAGE CLAIM LITG.

INSTALL NEW 20A/1P LTC CONTACTOR IN TUG AREA BESIDE BAG CONVEYOR CONTROL PANEL. COIL OF CONTACTOR TO MATCH CONTROL PANEL. CONTACTOR TO BE ENERGIZED AND TURNED ON BY DOWN LIGHTS OVER THE CONVEYOR. CONTACTOR SHALL BE INDICATED BY "4", "5", OR "6" TYPICAL OF 3.

ELECTRICAL CONTRACTOR WILL ADJUST CUTOFF OF ALL TYPE "H" LIGHTING FIXTURES TO THE SATISFACTION OF THE OWNER.

CIRCUIT THROUGH LIGHTING CONTROL RELAY IN SECOND FLOOR ELECTRIC ROOM.

TO POLE MTD. FIXTURE TYPE Q. REFER TO SHEET C08 FOR CONTINUATION

1" PVC CONDUIT TO BUILDING

1/2" PVC CONDUIT

VERIFY BOLT CIRCLE W/ POLE MANUFACTURER

KEEP DIMENSION WITHIN 3" DIA. CIRCLE

NOTE: EXACT SIZE TO BE DETERMINED BY ENGINEER BASED UPON POLE MANUFACTURER'S REQUIREMENTS.

VERIFY DIMENSION W/ POLE MANUFACTURER

FINISHED GRADE

STUB OUT 12" AND CAP

#6 BASE COPPER TO LUG ON POLE. RUN IN 1/2" PVC CONDUIT

WELDED CONNECTION TO GROUND ROD

GROUND ROD IN CONCRETE ON 8'-0" MIN. LENGTH x 3/4" #6 COPPERWELD

SECTION

PLAN

FIXTURE TYPE Q STANDARD POLE BASE DETAIL

NOT TO SCALE

NEW 2 POLE/20A LTC CONTACTOR

EXIST. LIGHTING CIRCUIT

NEW TYPE G FIXTURES

EXIST. FIXTURES

RELOCATED FIXTURE

CONTROL RELAY IN LIGHTING CONTROL FLOOR ELECTRIC ROOM

NEW 2 POLE/20A LTC CONTACTOR

120V COIL

EXIST. LIGHTING CIRCUIT

EXIST. PNL LP2A

NEW SPARE CKT

NEW SPARE CKT

TO SPARE 20A/1P BRKR IN PNL LP2A

RELOCATE EXISTING FIXTURE. EXISTING BOX FOR CONTACTOR TO BE REMOVED, CLEANED AND REINSTALLED

EXIST. FIXTURES TO BE REMOVED, CLEANED AND REINSTALLED

RELOCATE EXISTING LIGHTING THROUGH NEW LIGHTING CONTACTOR

EXIST. PNL LP2A

EXIST. LIGHTING CIRCUIT

NEW 2 POLE/20A LTC CONTACTOR

120V COIL

EXIST. LIGHTING CIRCUIT

EXIST. PNL LP2A

NEW SPARE CKT

NEW SPARE CKT

TO SPARE 20A/1P BRKR IN PNL LP2A

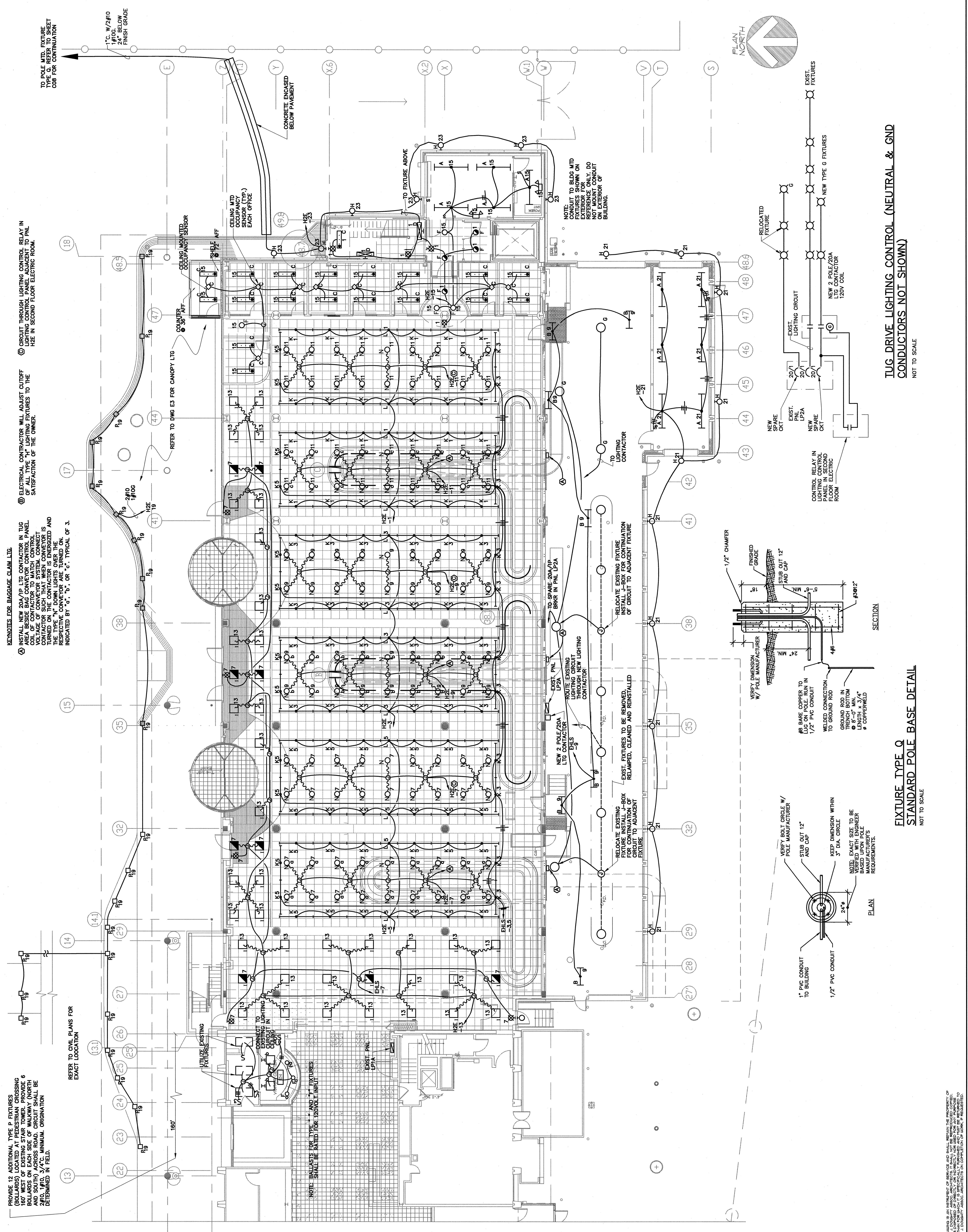
RELOCATE EXISTING FIXTURE. EXISTING BOX FOR CONTACTOR TO BE REMOVED, CLEANED AND REINSTALLED

EXIST. FIXTURES TO BE REMOVED, CLEANED AND REINSTALLED

RELOCATE EXISTING LIGHTING THROUGH NEW LIGHTING CONTACTOR

EXIST. PNL LP2A

EXIST. LIGHTING CIRCUIT



Dufresne-Henry
 Portland, Maine
 Tel: (207) 775-3111 • Fax: (207) 775-6434
 www.dufresne-henry.com

REVISION	DATE	DESCRIPTION	BY	CHKD	APPVD
1	APR 22, 2004	CONSTRUCTION SET	CEU	WMB	CBT
2	FEB 23, 2004	BD SUBMITTAL	CEU		
3	FEB 23, 2004		CEU		

PDA Architects
 Phillip J. Doughty Assoc., Architects
 362 U.S. Route One, Falmouth, Maine 04105 • 207.781.8346

STATE OF MAINE
 REGISTERED PROFESSIONAL ARCHITECT
 PHILLIP J. DOUGHTY, ARCHITECT

PORTLAND INTERNATIONAL JETPORT, PORTLAND, MAINE
 EASTERY EXPANSION OF BAGGAGE CLAIM FACILITY
 ADDITIONS AND ALTERATIONS
 FIRST FLOOR
 LIGHTING PLAN

SCALE: 1/8" = 1'-0"
 DATE: JAN 2004
 DESIGNED BY: JAE
 DRAWN BY: BWP
 CHECKED BY: JAE
 APPROVED BY: JAE

SHEET NO. **E1**
 8/02/03

THIS DRAWING IS AN INSTRUMENT OF SERVICE AND SHALL REMAIN THE PROPERTY OF PHILLIP J. DOUGHTY ASSOCIATES, ARCHITECTS. IT IS TO BE USED ONLY FOR THE PROJECT AND SITE SPECIFICALLY IDENTIFIED HEREON. IT IS NOT TO BE REPRODUCED, COPIED, OR TRANSMITTED IN ANY FORM OR BY ANY MEANS, ELECTRONIC OR MECHANICAL, INCLUDING PHOTOCOPYING, RECORDING, OR BY ANY INFORMATION STORAGE AND RETRIEVAL SYSTEM, WITHOUT THE WRITTEN PERMISSION OF PHILLIP J. DOUGHTY ASSOCIATES, ARCHITECTS. ORIGINATOR: PHILLIP J. DOUGHTY ASSOCIATES, ARCHITECTS.